

SALES SPECIALS

SPRING & SUMMER

NOW OPEN!

Altorfer Rents in
OGLESBY AND QUINCY, IL



OGLESBY

590 Mayers Ave | Oglesby, IL 61348
815-883-3336

Hours of Operation:
Monday – Friday 7:00 a.m. – 5:00 p.m.



QUINCY

6601 Broadway Street | Quincy, IL 62305
217-641-2047

Hours of Operation:
Monday – Friday 7:00 a.m. – 5:00 p.m.

DELIVERY OR CUSTOMER PICK UP – Your Choice with Altorfer’s RENT ‘N’ GO Program



TORO TRX250 TRENCHER*

Need to bury pipe or conduit? Do it yourself. It’s quick and easy with a trencher from The Cat Rental Store!

*Call your representative for pricing.



SHERPA 100 ECO ELECTRIC MINI SKID STEER LOADER*

Master of Demolition. All Bite, No Bark – Electric Mini Skid Loader with hammer attachment and grapple bucket

*Call your representative for pricing.

Prices valid through **September 30, 2022.**

All products are subject to availability. We reserve the right to correct pricing and printing errors.

NOTE If you wish to stop receiving our mailings, please email marketingdept@altorfer.com or cut out this address box and mail to: Altorfer Rents | 601 Richland Street | East Peoria, IL 61611

PRSRT STD
U.S. Postage
PAID
Permit No. 68
Wichita, KS

RENTAL SUPPLIES



Wacker

- WACPT2A 2" Pump **\$1,447.49**
- WACPT3A 3" Pump **\$1,755.99**
- WACPT4A 4" Pump **\$2,670.05**



Capital Rubber

- 2" x 50' PVC Discharge Hose **\$51.95**
- 3" x 50' PVC Discharge Hose **\$93.60**
- 4" x 50' PVC Discharge Hose **\$142.41**
- 2" x 20' PVC Suction Hose **\$63.90**
- 3" x 20' PVC Suction Hose **\$113.25**
- 4" x 20' PVC Suction Hose **\$190.15**



Tsurumi Submersible Pump

- Model LB480 2" Electric Pump **\$299.95**



- FS 400 Walk Behind Concrete Saw 18" guard **\$Call for Price**
- FS 524 Walk Behind Concrete Saw 24" guard **\$Call for Price**

Visit www.altorfer.com to sign up to receive this flyer via email.

LIFT TRUCKS FOR SALE



**2012 Taylor THC300S
ID# CN1669**

8' Ultra Vu Mast,
96" Forks – S/S F/P – LP Tank,
2,670 Hours,
Base Capacity 30,000 lbs. @ 24" LC



**2014 Taylor TXB200S
ID# 19VU628**

13' Ultra Vu Mast
96" Forks – Diesel – S/S F/P
12,559 Hours
Base Capacity: 20,000 lbs. @ 24" LC



**2014 Taylor TXB180S
ID# 19VU626**

13' Ultra Vu Mast
96" Forks – Diesel – S/S F/P
11,995 Hours
Base Capacity: 18,000 lbs. @ 24" LC



**2019 Taylor X360L
ID# 18VN1244**

13' Ultra Vu Mast
96" Forks – Diesel – S/S F/P
158 Hours
Base Capacity: 36,000 @ 24" LC



**2011 Jungheinrich ETB340
ID# EN946**

270"/119"/84" Triplex Mast
48" Forks – 36V – S/S
Stand-Up Straddle No Reach
Base Capacity: 4000 lbs. @ 24" LC



**2013 Jungheinrich EZS350
ID# EN991**

Tow Tractor
Tow Capacity: 11,000 lbs
Rockinger Hitch
10 Hours



**2012 Caterpillar DP70E
ID# VN1213**

160"/97"/49" Triplex Mast
96" Forks – Diesel – S/S F/P
8,750 Hours
Base Capacity: 15,500 lbs. @ 24" LC



**2019 Taylor X360L
ID# 18VN1245**

11' Ultra Vu Mast
96" Forks, S/S F/P, Diesel
Base Capacity 36,000 lbs. @ 24" LC

LIFT TRUCKS FOR RENT



**2020 Taylor XH350L
ID# 19VN1253**

15' Ultra Vu Mast
96" Forks
S/S F/P Diesel
Base Capacity 35,000 lbs.
@ 48" LC



**2020 Caterpillar DP160N
ID# 19PN1889**

121.5"/139"/3.6" Simplex Mast
96" Forks
S/S F/P – Diesel
Base Capacity: 36,000 lbs. @
24" LC



**2008 Taylor THC300S
ID# CN1573**

8' Ultra Vu Mast
96" Forks
S/S F/P – LP
Base Capacity: 30,000 lbs.
@ 24" LC

ALTORFER RENTS - THE CAT® RENTAL STORE

Bettendorf, IA 5909 State St. Bettendorf, IA 52722 Phone: 563-355-9898	Cedar Rapids, IA 6605 6th St. S.W. Cedar Rapids, IA 52404 Phone: 319-364-9898	West Burlington, IA 118 E. Agency W. Burlington, IA 52655 Phone: 319-752-6123	Decatur, IL 2425 Hubbard Ave. Decatur, IL 62526 Phone: 217-875-0909	Joliet, IL 16822 W. Laraway Rd. Joliet, IL 60433 Phone: 815-726-4248	Oglesby, IL 590 Mayers Ave. Oglesby, IL 61348 Phone: 815-883-3336	Rockford, IL 5055 South Main St. Rockford, IL 61102 Phone: 815-965-8631	Wauconda, IL 700 Patten Dr. Wauconda, IL 60084 Phone: 847-469-1320
Cedar Falls, IA 5420 Nordic Dr. Cedar Falls, IA 50613 Phone: 319-268-1490	Dubuque, IA 1025 Cedar Cross Rd. Dubuque, IA 52003 Phone: 563-556-3378	Champaign, IL 808 W. Bradley Ave. Champaign, IL 61820 Phone: 217-239-0744	East Peoria, IL 601 Richland St. East Peoria, IL 61611 Phone: 309-694-9898	Naperville, IL 800 Enterprise Court Naperville, IL 60563 Phone: 331-814-4400	Quincy, IL 6601 Broadway Street Quincy, IL 62305 Phone: 217-641-2047	Springfield, IL 4949 International Pkwy Springfield, IL 62711 Phone: 217-585-9898	Hammond, IN 6400 Indianapolis Blvd. Hammond, IN 46320 Phone: 219-932-6600

ALTORFER RENTS SALES REPRESENTATIVES

Tracie Ferguson 563-528-0616 tracie.ferguson@altorfer.com Bettendorf, IA	Mark Collum 319-531-6049 mark.collum@altorfer.com Cedar Falls, IA	Joe Callahan 563-258-3980 joe.callahan@altorfer.com Dubuque, IA	Bob Czarnowski 630-432-1131 bob.czarnowski@altorfer.com Joliet, IL	Charles Gutierrez 630-465-6961 charles.gutierrez@altorfer.com Naperville, IL	Adam Paul 217-303-9717 adam.paul@altorfer.com Quincy, IL	Angelo Karagiannakis 219-798-6851 angelo.karagiannakis@altorfer.com Hammond, IN
Jenna Wardlow 563-340-5919 jenna.wardlow@altorfer.com Bettendorf, IA	Craig Greiner 319-899-7291 craig.greiner@altorfer.com Champaign, IL	Neil Ehlers 309-210-8701 neil.ehlers@altorfer.com Champaign, IL	David Murray 815-641-5695 david.murray@altorfer.com Joliet, IL	Jackson Yeager 815-681-0025 jackson.yeager@altorfer.com Oglesby, IL	Patrick Nagonski 224-234-8240 patrick.nagonski@altorfer.com Rockford, IL	Jerry Lodovisi 219-688-6853 jerry.lodovisi@altorfer.com Hammond, IN
Andy Weber 563-552-6324 andy.weber@altorfer.com Bettendorf, IA	Paul Schneider 319-573-1312 paul.schneider@altorfer.com Cedar Rapids, IA	Brady Curry 217-622-9317 brady.curry@altorfer.com Decatur, IL	James Brevoort 331-300-1225 james.brevoort@altorfer.com Naperville, IL	Dan Dunn 309-241-3409 dan.dunn@altorfer.com East Peoria, IL	Kirk Pellhum 217-622-1405 kirk.pellhum@altorfer.com Springfield, IL	Joni Troy 219-895-3633 joni.troy@altorfer.com Hammond, IN
Aaron Tolander 319-850-1985 aaron.tolander@altorfer.com Burlington, IA	Nick Weber 319-654-2219 nick.weber@altorfer.com Cedar Rapids, IA	Drew Minton 217-986-0318 drew.minton@altorfer.com Decatur, IL	Todd Goodin 815-666-6361 todd.goodin@altorfer.com Naperville, IL	Dave Sorensen 309-369-8689 dave.sorensen@altorfer.com East Peoria, IL	Ryan Martensen 630-432-2933 ryan.martensen@altorfer.com Wauconda, IL	

LIFT TRUCK SALES REPRESENTATIVES

Ward Fulmer 319-540-6200 ward.fulmer@altorfer.com Cedar Rapids, IA	Randy Benisch 563-529-4398 randy.benisch@altorfer.com Davenport, IA
------------------------------------------------------------------------------------	-------------------------------------------------------------------------------------

PARTS AND SERVICE SALES REPRESENTATIVES (PSSRS)

Mike O'Neil 563-529-3314 mike.oneil@altorfer.com Illinois	Steve Serbousek 319-310-5628 steve.serbousek@altorfer.com
---------------------------------------------------------------------------	------------------------------------------------------------------------

ALLIED RENTAL EQUIPMENT "HOT BUYS"



Cat® CUV82

2 passenger, Gas, 4wd, Canopy, Windshield.
2018 – 378 Hrs. – #1823R95



JLG 315C

2 passenger, Gas, 4wd, Canopy.
2017 – 281 Hrs. – #1723R4



Taylor Dunn G100

2 passenger, Gas, 2wd, Cab.
2017 – 2,096 Hrs. – #1723R20



Club Car XRT1500

2 passenger, Gas, 4wd, Cab.
2013 – 5,400 Hrs. – #1319R1295



Cushman 1600XD4

4 passenger, Gas, 4wd, Cab.
2014 – 1,409 Hrs. – #1419R1438



JLG 615G

4 passenger, Gas, 4wd, Canopy.
2017 – 367 Hrs. – #1723R7



Polaris Ranger XP 900HD

2 passenger, Gas, 4wd, Cab, Snow Plow,
Salt Spreader.
2016 – 1,311 Hrs. – #B20758



Polaris Ranger 570

2 passenger, Gas, 4wd, Cab
2017 – 921 Hrs. – #B22825

\$19.99



HOT RED 12969

1510552
LOGO POCKET
TEE

\$19.99



DARK HEATHER GREY 004

1510305
TM LOGO TEE

\$26.99



HI-VIS YELLOW 407

1510499
HI-VIS TRADEMARK
POCKET TEE

\$24.99



BLACK 016

1510034
TRADEMARK
BANNER LONG
SLEEVE TEE

\$4.99



CAT017418
HI-VIS LATEX COATED
PALM GLOVE



W01791
TRADEMARK CAP

\$14.99

Products stocked in dealerships may vary. Additional colors may be special ordered.

CAT® WORKWEAR



\$9,450

Multi Quip Rammax Trench Roller
Diesel, 33" drums, trench roller
2014 - 463 Hrs. - #1412R216



\$4,750

GME 6M424NKE
Steel trench shield, 4' tall x 24' long,
with 48" spreaders, no knife edge
2013 - Hrs. NA - #1314R573



\$4,250

GME 6M420NKE
Steel trench shield, 4' tall x 20' long,
with 48" spreaders, no knife edge
2013 - Hrs. NA - #1314R572



\$3,950

GME MH412DW
Steel manhole box, 4' tall x 12' long,
double wall
2008 - Hrs. NA - #0814R422



\$4,950

Vermeer RT200 Trencher
Walk behind, gas powered
36" trencher boom
2012 - 65 Hrs. - #1214R546



\$31,250

Cat XQ 35 Generator
27 KW diesel, towable generator
multi voltage distribution
2019 - 2,401 Hrs. - #1916R636



\$6,450

Miller Blue 350PP Welder
400 amp, diesel, towable welder
2015 - 1,481 Hrs. - #1516R520



\$26,450

Gorman Rupp PA4A71C
Diesel, 4" air assisted prime
towable pump
2017 - 718 Hrs. - #1716R555



\$13,900

Towmaster T-20T Trailer
24' trailer, 20,000 lb GVWR
2015 - Hrs. NA - #B19941



\$1,275

Honda WT40X Trash Pump
8 hp gas engine, 423 gal/min capacity
2018 - Hrs. NA - #1816R592



\$750

Lincoln V275-S Inverter Welder
275 Amp output, Stick & Tig Welder
2012 - 11 Hrs. - #B04797



\$1,950

Genie Super Straddle
For use with AWP units
109" overall length
2014 - Hrs. NA - #1418R1860



\$5,900

Allmand Night Lite Pro V-Series
5,000 W light tower, diesel, 26' tower
2019 - 4,005 Hrs. - #1919R1749



\$4,200

Allmand Night Lite Pro II
4 bulb, lay down, 5,000W, light tower
2015 - 8,073 Hrs. - #1519R1531



\$3,150

Generac PLT 240 LED Light Tower
110V DC, 16' vertical mast
4 240W LED lights
2017 - Hrs. NA - #1719R1605



\$750

Dri-Eaz F412 Dehumidifier
110V DC, 325 cfm , high performance
dehumidifier
2018 - 1,163 Hrs. - #1819R1653



\$8,950

Skyjack 3219 Scissor Lift
24V DC, 32" wide, 19' platform height
2019 - 75 Hrs. - #1918R3041



\$9,250

Skyjack SJ16 Man Lift
16' Runabout personnel lift
500 lb capacity
2019 - 53 Hrs. - #1918R3029



\$8,950

Skyjack SJ3013 Scissor Lift
24V DC, 30" wide, 12.8' platform height
2020 - 49 Hrs. - #2018R3385



\$4,900

Hybrid HB1030 Scissor Lift
24V DC, 30" wide, 10' platform height
2015 - 97 Hrs. - #1818U109



\$13,950

Lincoln Dual Vantage 700 Welder
Diesel, 700 amp, towable welder
2015 - 1,139 Hrs. - #B16964



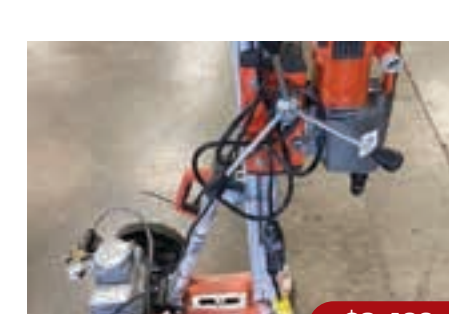
\$13,450

Sullair 185DPO-CAT
Diesel, 185cfm, towable air compressor
2012 - 1,219 Hrs. - #1421U11



\$1,050

GME 2AEX410NKE
Aluminum stacker box, 4' tall x10' long,
with 44"-68" spreaders
2012 - Hrs. NA - #1214R543



\$3,400

Husqvarna DMS 280
Stand mounted, core drill,
with vacuum pad
2020 - Hrs. NA - #2013R806



\$8,450

Genie GS1330 Scissor Lift
24V DC, 31" wide, 12.8" platform height
2020 - 31 Hrs. - #2018R3246



\$1,850

Genie SLA-25 Material Hoist
26' 5" lifting height, 650 lb capacity
2017 - Hrs. NA - #1718R2299



\$5,950

Genie AWP-30 Single Man Lift
12V DC, 29' 6" platform height
2015 - Hrs. NA - #B07445



\$4,950

Genie IWP-30 Single Man Lift
12V DC, 29' 6" platform height
2008 - Hrs. NA - #0818R1148



\$1,075

Bosch Model BH2760VCB
110V DC, 35 ft/lbs impact energy,
1-1/8" chuck
2018 - Hrs. NA - #1815R80



\$6,450

Hybrid HB1430 Scissor Lift
24V DC, 30" wide, 14' platform height
2015 - 160 Hrs. - #1718U76



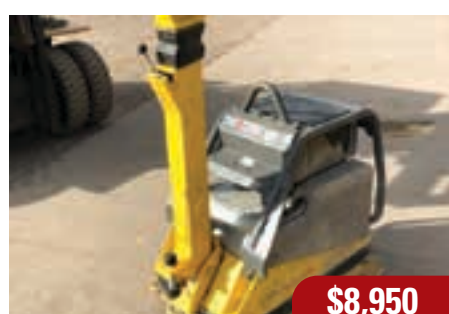
\$975

Sullair MRB-8 Rivet Buster
Air consumption 44cfm,
1140 blows/minute
2021 - Hrs. NA - #2021R710



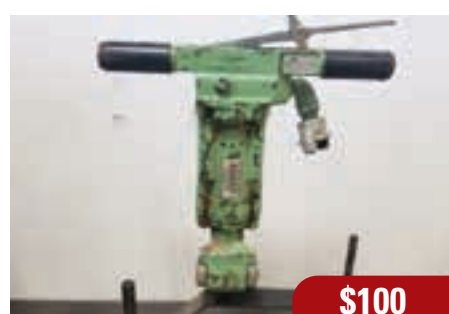
\$5,950

Miller Bobcat 250 Welder
Gas, 250 amp, push around welder
2020 - 8 Hrs. - #2016R680



\$8,950

Wacker DPU 6555
Diesel, reversible, plate compactor
22" base
2019 - 81 Hrs. - #1912R298



\$100

Sullair MP90A
90# pneumatic breaker
2010 - Hrs. NA - #1021R378



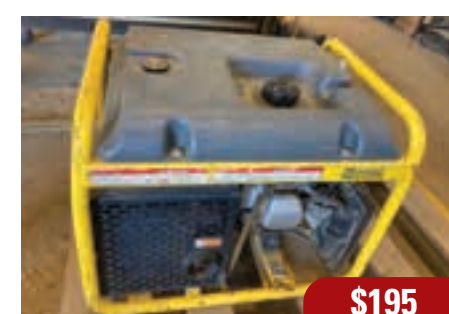
\$100

Sullair MRD-55 Rock Drill
Pneumatic rock drill, 55#, 7/8" HX x 4.25"
2011 - Hrs. NA - #1121R409



\$250

AGL Manhole Rod Group
Mounts pipe lasers above manholes,
works with any laser
2014 - Hrs. NA - #1419R1353



\$195

Wacker GP2500A Generator
Honda 4 stroke, gas, 2500 watt generator
2009 - Hrs. NA - #B01126



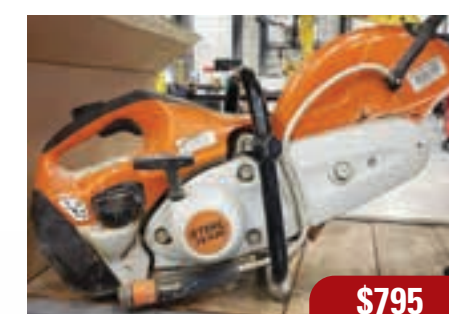
\$1,400

Husqvarna K760 saw
Gas powered saw, 14" guard
2020 - Hrs. NA - #2013R819



\$54,900

Genie S60X Boom Lift
Diesel, 4wd, 60' platform height
2015 - 1,655 Hrs. - #B16836SM



\$795

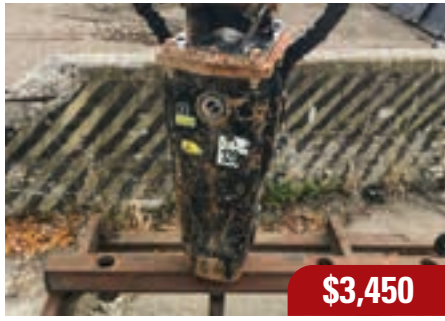
Stihl TS420 Saw
Gas, 14" concrete saw with guard
2019 - Hrs. NA - #2013R815

CAT® WORK TOOLS



\$4,950

Cat® Fusion Multi Purpose Bucket
fusion mount, 2.5 cubic yard capacity
2016 - #B25239



\$3,450

Cat H55E Hydraulic Hammer
304 excavator mount, 600 ft-lbf
2018 - #B24240



\$1,400

Cat IT Backhoe GP Bucket
IT mount, 1.3 cubic yard capacity
2015 - #B19962



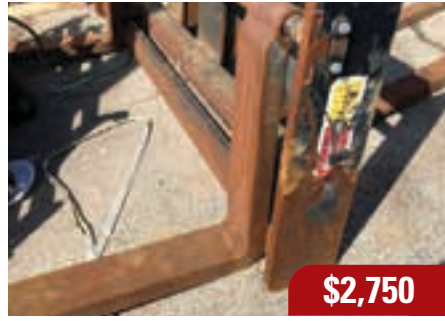
\$450

Cat 12" Heavy Duty Bucket
backhoe mount, .10 cubic yard capacity
2016 - #165RA387



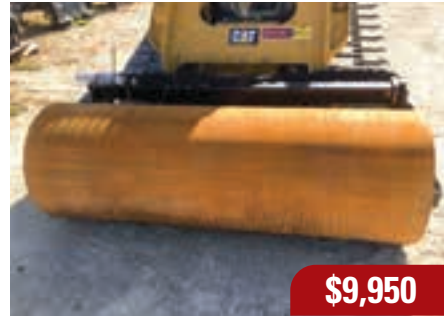
\$2,450

Cat IT Material Handling Arm
backhoe IT coupler mount,
4,600 lb capacity
2018 - #B23647



\$2,750

Cat 953 Track Loader Forks
84" wide carriage, 72" forks
2011 - #114RA67



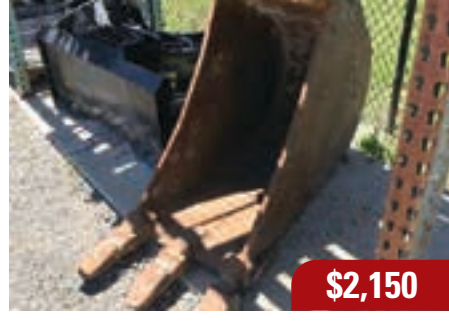
\$9,950

Cat CV18B SSL Vibratory Roller
skidsteer mount, 73" drum width
2019 - #196RA2533



\$2,750

AMI SSL Grapple Forks
skidsteer mount, 72" fork tines
2016 - #B27681



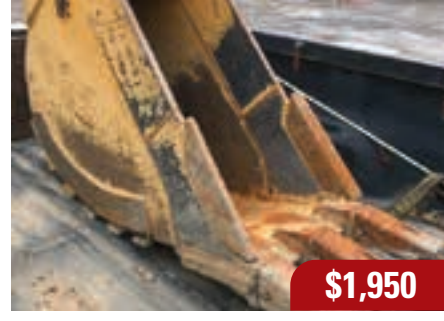
\$2,150

Cat 24" General Duty Bucket
316 excavator mount,
.50 cubic yard capacity
2017 - #172RA943



\$1,050

Cat 48" Ditch Clean Bucket
backhoe mount, .48 cyd capacity
2019 - #195RA510



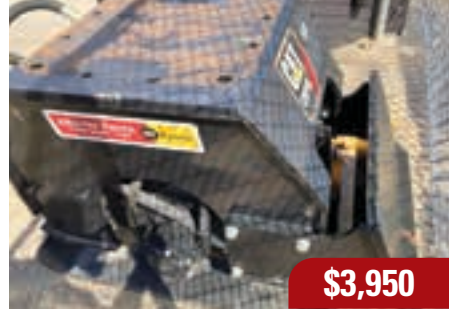
\$1,950

Rockland 18" Heavy Duty Bucket
316 excavator mount,
.40 cubic yard capacity
2015 - #152NA034



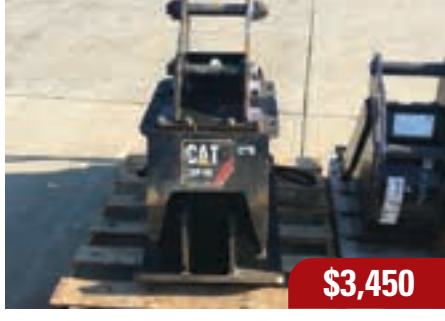
\$945

Cat IT Lifting Hook
telehandler mount, 10,000 lb capacity
2016 - #B25659



\$3,950

Cat CVP75 Vibratory Plate Compactor
316 excavator mount, backfill blade
2018 - #182RA1223



\$3,450

Cat CVP40 Vibratory Plate Compactor
backhoe mount, backfill blade
2018 - #185RA448



\$750

Cat 13" Heavy Duty Bucket
308 excavator mount
2018 - #182RA1066



\$400

Cat 16" Smooth Edge Bucket
305 excavator mount
2012 - #B20961



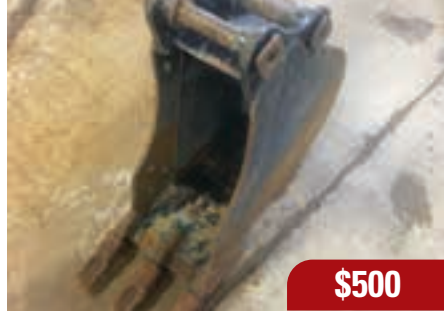
\$9,950

Cat H115ES Hydraulic Hammer
316 excavator mount, 3,000 ft-lbf
2015 - #B21926



\$4,900

Cat H75E Hydraulic Hammer
backhoe mount, 1,000 ft-lbf
2015 - #B19372



\$500

Cat 12" Heavy Duty Bucket
304 excavator mount,
.08 cubic yard capacity
2019 - #192RA1318



\$950

Werk Brau 12" Smooth Edge Bucket
308 excavator mount
2017 - #202RA1619



\$1,475

Cat H45ES Hydraulic Hammer
301.7 excavator mount, 399 ft-lbf
2014 - #142RA633



\$975

Cat 36" Ditch Clean Bucket
backhoe mount, .48 cyd capacity
2017 - #175RA423



\$3,400

Cat 42" General Duty Bucket
315 excavator mount,
.84 cubic yard capacity
2019 - #192RA1391



\$1,450

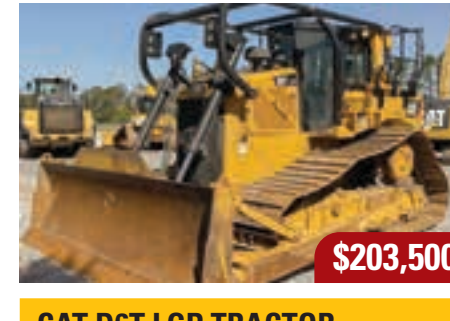
Cat A26B High Flow Auger Drive
skidsteer mount, 81 rpm bit speed
2017 - #176RA1790

USED CONSTRUCTION EQUIPMENT 1-800-DEMO CAT



\$104,500

CAT® D6R LGP TRACTOR
Model: D6R LGP ID: 201U050
Year: 2005 Serial No: ADE00740
Hours: 8,021



\$203,500

CAT D6T LGP TRACTOR
Model: D6T LGP ID: US00117
Year: 2015 Serial No: HTZ00470
Hours: 5,208



\$79,750

CAT TH255C TELEHANDLER
Model: TH255C ID: UN00082
Year: 2019 Serial No: JK204144
Hours: 424



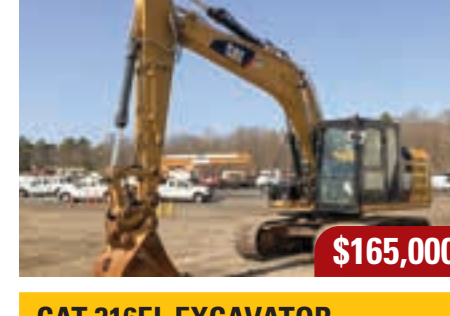
\$54,500

CAT 305E CR EXCAVATOR
Model: 305E CR ID: UN00090
Year: 2013 Serial No: XFA01850
Hours: 1,273



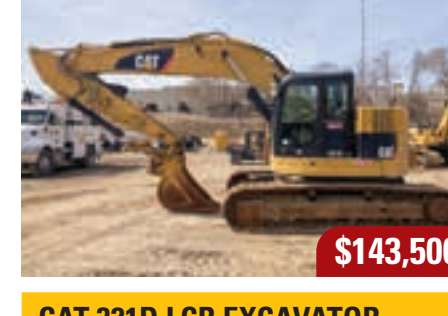
\$132,500

CAT 313FL GC EXCAVATOR
Model: 313FL GC ID: UE5797
Year: 2017 Serial No: GJD10068
Hours: 3,535



\$165,000

CAT 316EL EXCAVATOR
Model: 316EL ID: UN00079
Year: 2015 Serial No: DZW01780
Hours: 2,884



\$143,500

CAT 321D LCR EXCAVATOR
Model: 321D LCR ID: UE5802
Year: 2013 Serial No: MPG00632
Hours: 5,311



\$90,500

CAT 330DL EXCAVATOR
Model: 330DL ID: US00119
Year: 2008 Serial No: MWP02677
Hours: 9,902



\$250,000

CAT M320F WHEEL EXCAVATOR
Model: M320F ID: UE5653
Year: 2017 Serial No: FB200387
Hours: 1,390



\$121,500

CAT M322D WHEEL EXCAVATOR
Model: M322D ID: US00057
Year: 2013 Serial No: D2W00465
Hours: 5,623



\$203,500

CAT 335FL CR EXCAVATOR
Model: 335FL CR ID: UE5777
Year: 2016 Serial No: KNE00663
Hours: 4,628



\$77,500

CAT 420F BACKHOE LOADER
Model: 420F ID: US00001
Year: 2012 Serial No: SKR00542
Hours: 2,935



\$38,500

CAT 430D IT BACKHOE LOADER
Model: 430D IT ID: UN00092
Year: 2002 Serial No: BML02308
Hours: 4,119



\$52,500

CASE 580SM BACKHOE LOADER
Model: 580SM ID: US00109
Year: 2009 Serial No: N9C525612
Hours: 4,587



\$176,500

CAT 966M XE WHEEL LOADER
Model: 966M XE ID: 214U046
Year: 2015 Serial No: P6C00418
Hours: 8,587



\$269,500

CAT 963K TRACK LOADER
Model: 963K ID: 203U003
Year: 2017 Serial No: LBL00598
Hours: 3,605



\$88,500

CAT AP-1055D PAVER
Model: AP-1055D ID: AP-1055D
Year: 2010 Serial No: FAC00774
Hours: 6,525



\$396,500

CAT PM620 COLD PLANER
Model: PM620 ID: UN00078
Year: 2019 Serial No: JB900211
Hours: 1,074



\$33,500

CAT CB24 COMPACTOR
Model: CB24 ID: UN00075
Year: 2009 Serial No: 24000563
Hours: 989



\$10,000

DYNAPAC CC900G COMPACTOR
Model: CC900G ID: UN00099
Year: 2013 Serial No: 2497
Hours: 963



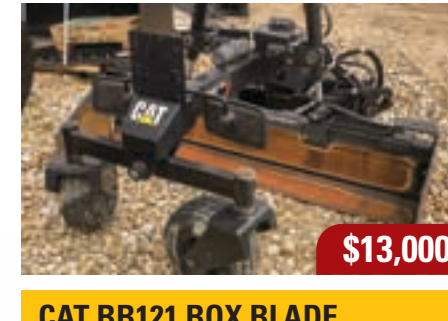
\$77,500

CAT CB54B COMPACTOR
Model: CB54B ID: UE5149
Year: 2014 Serial No: LXD00222
Hours: 845



\$58,000

CAT CB64 COMPACTOR
Model: CB64 ID: 2111U016
Year: 2015 Serial No: CB500232
Hours: 2,792



\$13,000

CAT BB121 BOX BLADE
Model: BB121 ID: 216UA001
Year: NA Serial No: JK500122
Hours: NA



\$17,000

ARTIC 19 FT SECTIONAL SNOW PLOW
Model: 19 FT PLOW ID: B26404
Year: 2015 Serial No: L1779
Hours: NA

AG EQUIPMENT SPECIALS



\$279,900

2016 MT855E
2685 Hrs., 30" tracks, PTO,
5 remotes



\$289,900

2018 CH1050
1910 Hrs., Big Singles, PTO,
5 remotes



\$149,000

2016 TG8400B
2400 Hrs., Tall Tire Kit, L4500G4
Box, Vipor4



\$153,000

2015 RG1100B
2460 Hrs., 120' Booms, 1100 Gallon
Tank, 4 wheel steer



\$214,900

2016 740TT
2075//1452 Hrs., 4WD, Tracks,
3D Sieves



\$137,900

2014 JD S680
3385//2580 Hrs., 4WD,
Auto Contour, Elec Sieves



\$119,900

2013 NH CR8080
2495//1815 Hrs., 2WD, 1250 Front
Tires, Auto Contour



\$399,900

2019 Fendt 8T
425//277 Hrs., 4WD, Tracks,
Auto Contour

AltorferUsed.com
319-643-6312

LEXION **RoGator** **TerraGator** *Challenges*

USED POWER EQUIPMENT



\$10,400

2007 XQ60
F0608
Cat Tier 3 C4.4 Engine
Sound Attenuated
Enclosure
Maintained by Cat Cert.
Technicians since new
19,620 Hrs.



\$9,000

2009 XQ60
F0627
Cat Tier 3 C4.4 Engine
Sound Attenuated
Enclosure
Maintained by Cat Cert.
Technicians since new
26,333 Hrs.



\$9,900

2009 XQ45
F0652
Cat Tier 3 C4.4 Engine
Sound Attenuated
Enclosure
Maintained by Cat Cert.
Technicians since new
16,832 Hrs.

**NOW
HIRING**



www.althorfer.com/careers/

TEXT HOTBUYS TO 855-779-4141



Get our latest rental hot buys
24 HOURS EARLY with our
exclusive text messages.

Don't miss special pricing and
limited-time offers! Sign up today!



www.althorfer.com/hotbuys/