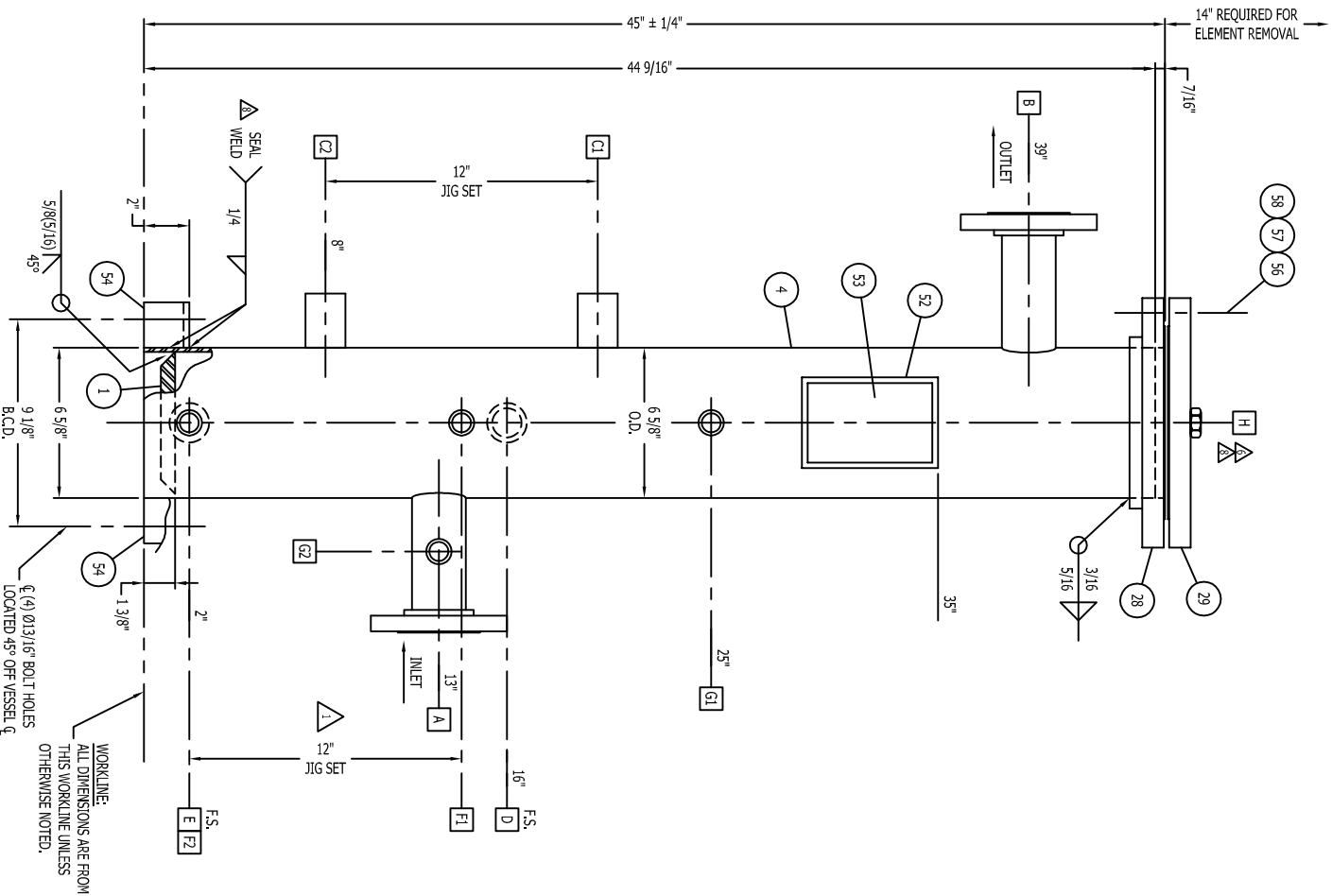


WELD DETAIL

DESCRIPTION	DETAIL
SHELL TO HEAD	SEE ELEV. VIEW
WAVEPLATE BRACKET TO SHELL	HW-200



ELEVATION
SCALE: 3"=12"

WORKLINE:
ALL DIMENSIONS ARE FROM
THIS WORKLINE UNLESS
OTHERWISE NOTED.

LOCATED 45° OFF VESSEL Q

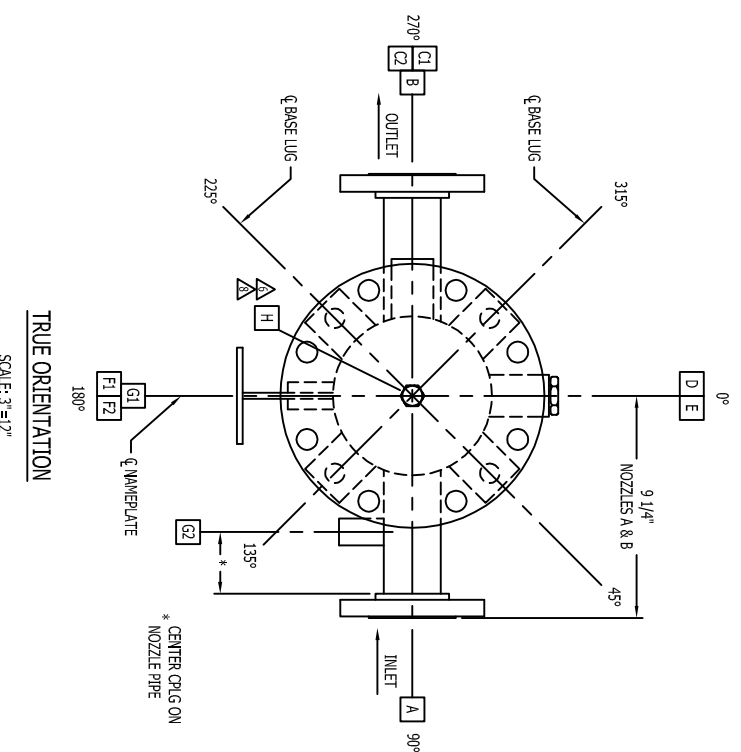
Q (4) Ø13/16" BOLT HOLES

SCHEDULE OF OPENINGS

MARK	NO.	SERVICE	SIZE	RATING	TYPE	BORE	WALL	NECK		SCHED.	I.S. CONTOUR	WELD DETAIL	WELD SIZE			ITEM NO.
								LG.	IG.				A	B	C	
A	1	INLET	2"	150#	RF50	2.657"	1/8"	9 1/2"	1/2"	40	SET SQ. CONTOUR	M-W	1/4	1/4	1/4	27
B	1	OUTLET	2"	150#	RF50	2.657"	1/8"	6 3/8"	1/2"	40	CONTOUR	M-W	1/4	1/4	1/4	26
C-1	1E-A	FLSG	1"	3000#	CRG							OW-H	1/4	1/4	1/4	36
C-2	1E-A	FLSG	1"	3000#	CRG							OW-H	1/4	1/4	1/4	35
D	1	EQUALIZER	1"	3000#	CRG							OW-H	1/4	1/4	1/4	36
E	1	DRAIN	1"	3000#	CRG							OW-H	1/4	1/4	1/4	36
E-2	1E-A	LENG. GAUGE	1/2"	3000#	CRG							OW-H	1/4	1/4	1/4	37
G-2	1E-A	FLSG	1/2"	3000#	CRG							OW-H	1/4	1/4	1/4	37
H	1	VENT	1/2"		NPT							OW-H	1/4	1/4	1/4	48

BILL OF MATERIAL

ITEM	QUAN	MULT	U/M	I.C.N.	DESCRIPTION	MATERIAL
1	1	1	EA	02-000729	HEAD BOTTOM PLATE 58" THK X 5 7/8" O.D.	SA-516-70
4	1	3/22	FL	13-006522	PIPE SHELL 6" - 188" WALL THK X 44 9/16" I.D.	SA-53-B
26	1	1	EA	05-001241	NOZZLE ASSY 2"-150# RF50 SA-40 X 6 1/2" LG.	SA-105 SA-105-B
27	1	1	EA	05-002382	NOZZLE ASSY 2"-150# RF50 TEE SA-40 X 9 1/2" LG.	SA-105 SA-105-B
28	1	1	EA	55-00782	FLANGE 6" 300# RF50	SA-105
29	1	1	EA	17-15	FLANGE ROUND 6" 150# RF50 W/ 1/2" TAP	SA-105
36	4	1	EA	05-015515	CG 6, 1"-3000# HMLE THRD X 1 1/4" LG.	SA-105
37	4	1	EA	05-01670	CG 6, 1/2"-3000# FULL THD 1 7/8" LG.	SA-105
38					(ELTB)	
46	1	1	EA	12-00291	PLUG 48 HO, 1"	SA-105
48	1	1	EA	12-00289	PLUG 48 HO, 1/2"	SA-105
52	1	1	EA	02-000475	WAVEPLATE BRACKET T-7	A-36
53	1	1	EA	05-007831	WAVEPLATE CODE	A-36
54	4	1	EA	02-000556	LUG, BISE #2	SA-36
56	8	1	EA	55-000214	STUD 3/4" X 4 1/4" LG. (ZINC COATED)	SA-193-B
57	16	1	EA	12-00293	NUT 7/8" HGT 3/4" (ZINC COATED)	SA-193-B
58	1	1	EA	12-02705	WASHER 7/8" X 1 1/4" (ZINC COATED)	SA-193-B
501	2	1	EA	12-02394	PROTECTOR, FLANGE 2"-150#	POLY
801	1	1	QAL	05-039553	PAINT CARBOCOURT T50, GRAY	ALUM
802	1	1	QAL	05-039568	THINNER, CARBOLINE #10	



TRUE ORIENTATION
SCALE: 3"=12"

ALL DIMENSIONS ARE ± .1/8" (3 MM) UNLESS OTHERWISE NOTED.

REV	ECO	DATE	BY	QCD	ENGR	DESCRIPTION
0	--	7-29-02	CJM	QC	BS	FIRST ISSUE (DWR# 25786)
1	R11201	10-25-02	WRW	QC	BS	REL. DIM. (DWR# 26121)
2	R11206	10-31-02	WRW	QC	BS	ADDED TEXT "RES" TO NAME PLATE (DWR# 26142)
3	R13456	5-03-06	JS	DAC	TAE	REVISED BOM (DWR# 30365)
4	--	5-4-08	WRG	BL	TAE	REVISED NAME PLATE, VESSEL MODEL (DWR# 33514)
5	--	06/24/10	DB	DAC	TAE	REV. AS NOTED (DWR# 35487)
6	--	12-09-10	MWS	DAC	TAE	REVISE DWG. PER MARK-UP (DWR# 35883)
7	--	02-09-11	MWS	SWD	RJG	REVISE DWG. TO ADD TEXT. REVISE TO 275 PSIG (DWR# 38021)
8	--	09/28/12	VZW	--	--	REV. TO REMOVE THEOULET CHANGE ITEM NO 29. TO 17315 (DWR# 37223)

ESTIMATED WEIGHTS	LBS.	KG
EMPTY	110	.
FULL OF WATER	170	.

OPERATING QTY. REQD.: *

PROJECT NO.: *

CUSTOMER: *

P.O. NO.: *

Facet MINERAL WELLS, TEXAS
WWW.PECONFACET.COM

MODEL: 89-1-312-6-275-2
VERTICAL FILTER SEPARATOR

SERIES 89

DATE: 7-29-02 DATE: 12/29/06 REV.: 8

IF REQUIRED BY SALES ORDER, STAMP NAMEPLATE WITH CRI FOR PROVINCE:

ALBERTA: SASKATCHEWAN: BRITISH COLUMBIA: ONTARIO: CAN IS ONLY VALID TO 275 PSIG FROM -20 TO 100# WITH 1 1/8" CA.

* SEE SALES ORDER

CERTIFIED BY:

W RES: U

MAWP: PSIG AT OF

MDMT: OF AT PSIG

MAEP: PSI AT OF

SER. NO.

CA. INCH YR. BLT

MODEL:

CLOSURE GASKET NO.

P.O. NO.

Facet For Service Call: 1-800-877-7236
Website: www.pconfacet.com

TAG NO.: *