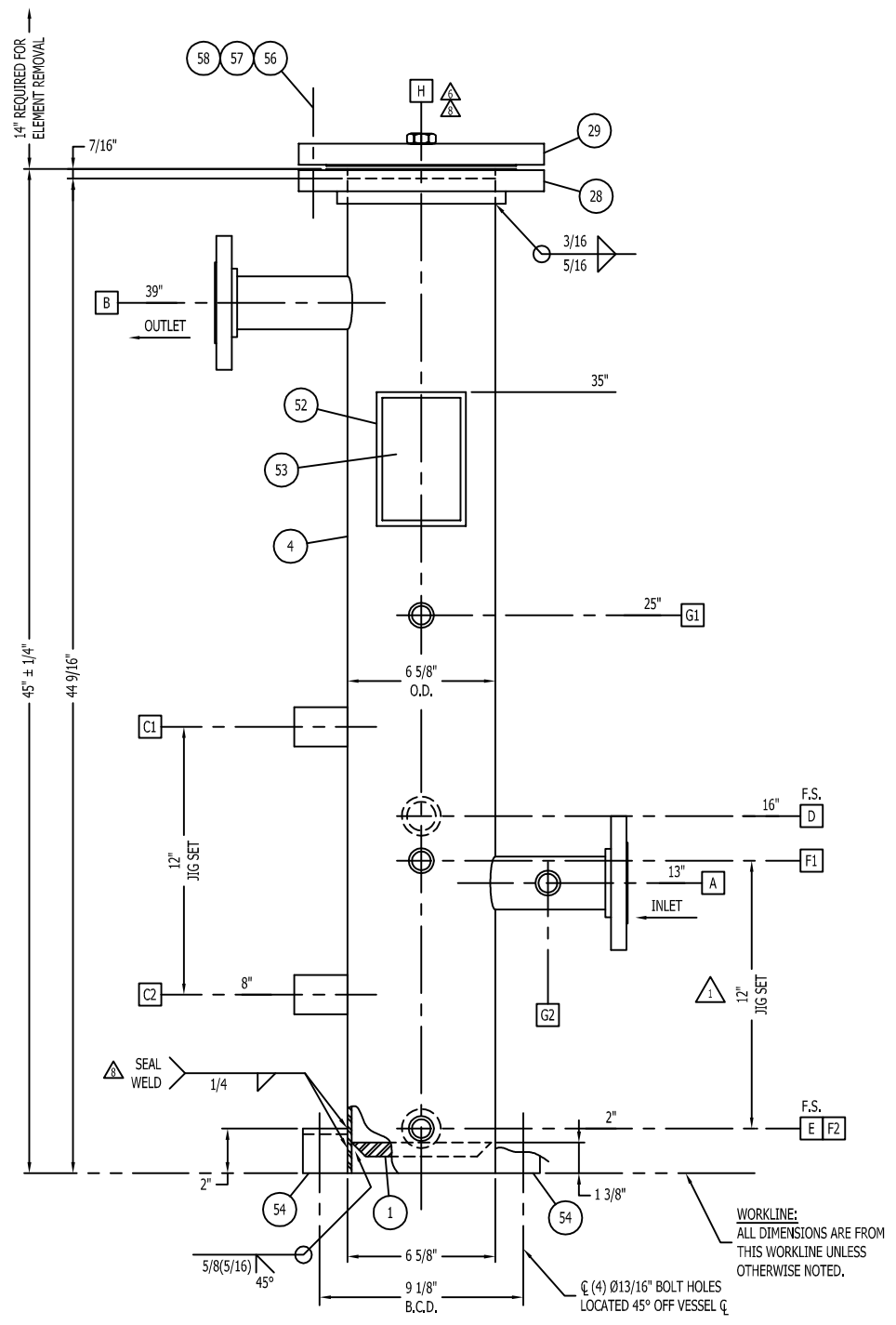


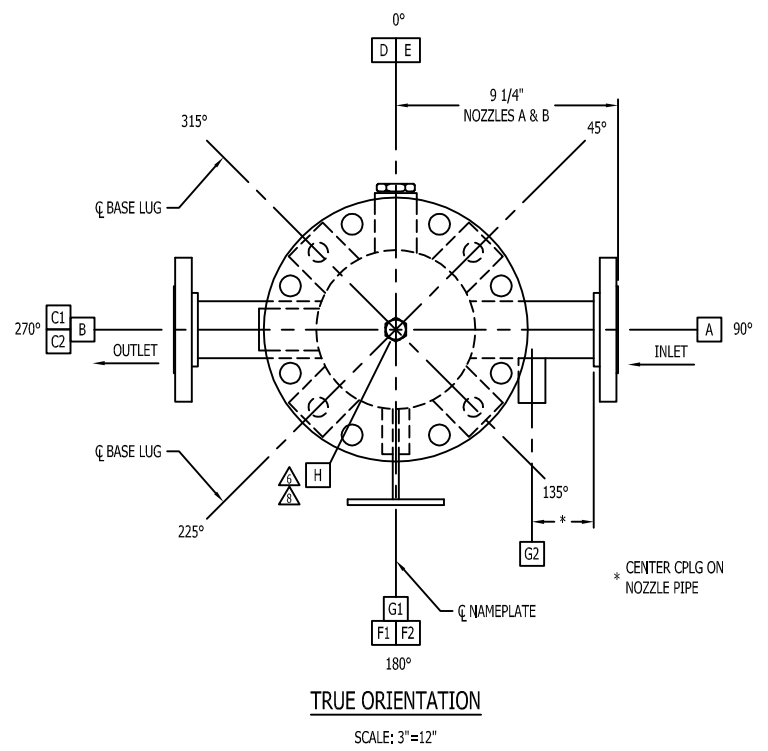
WELD DETAIL	
DESCRIPTION	DETAIL
SHELL TO HEAD	SEE ELEV. VIEW
NAMEPLATE BRACKET TO SHELL	NP-200

SCHEDULE OF OPENINGS																	
MARK	NO.	SERVICE	SIZE	RATING	TYPE	BORE	NECK			PROJECTION		WELD DETAIL	WELD SIZE			ITEM NO.	
							WALL	LG.	SCHED.	I.S.	CONTOUR		A	B	C	PIPE	NOZZLE
A	1	INLET	2"	150#	RFSO	2.067"	.154"	9 1/2"	40	0.0	SET SQ.	NW-1	1/4			27	
B	1	OUTLET	2"	150#	RFSO	2.067"	.154"	6 3/8"	40		CONTOUR	NW-1	1/4			26	
C1-2	1EA.	HLSO	1"	3000#	CPLG							CW-11	1/4			36	
D	1	EQUALIZER	1"	3000#	CPLG							CW-11	1/4			36	
E	1	DRAIN	1"	3000#	CPLG							CW-11	1/4			36, 46	
F1-2	1EA.	LEVEL GAUGE	1/2"	3000#	CPLG							CW-11	1/4			37	
G1-2	1EA.	P.D.J.	1/2"	3000#	CPLG							CW-11	1/4			37	
H	1	VENT	1/2"		FNPT											48	

BILL OF MATERIAL									
ITEM	QUAN	MULT	U/M	I.C.N.	DESCRIPTION	MATERIAL	M	T	R
1	1	1	EA	02-000729	HEAD, BOTTOM PLATE 5/8" THK X 5 7/8" O.D.	SA-516-70			X
4	1	3.72	FT.	13-006522	PIPE, SHELL, 6" - .188" WALL ERW X 44 9/16" LG.	SA-53 B			
26	1	1	EA	09-001241	NOZZLE, ASSY 2"-150# RFSO, S/40 X 6 1/2" LG.	SA-105/SA-106-B			
27	1	1	EA	09-002957	NOZZLE, ASSY 2"-150# RFSO, TOE S/40 X 9 1/2" LG.	SA-105/SA-106-B			
28	1	1	EA	55-104782	FLANGE, 6"-150# RFSO	SA-105			
29	1	1	EA	17315	FLANGE, BLIND 6"-150# RFB/W 1/2" TAP	SA-105			
36	4	1	EA	05-105515	CPLG, 1"-3000# HALF THRD X 1 1/4" LG.	SA-105			
37	4	1	EA	05-105470	CPLG, 1/2"-3000# FULL THRD 1 7/8" LG.	SA-105			
38					DELETED				
46	1	1	EA	12-026291	PLUG, HX HD, 1"	SA-105			
48	1	1	EA	12-026289	PLUG, HX HD, 1/2"	SA-105			
52	1	1	EA	02-000475	NAMEPLATE BRACKET T-7	A-36			
53	1	1	EA	05-007831	NAMEPLATE CODE	ALUM			
54	4	1	EA	02-000526	LUG, BASE #2	SA-36			
56	8	1	EA	55-040741	STUD, 3/4" X 4 1/4" LG. (ZINC COATED)	SA-193-B7			
57	16	1	EA	12-026208	NUT, HWY HEX 3/4" (ZINC COATED)	SA-194-2H			
58	1	1	EA	12-027105	GASKET, FLEXITE 6"-150#	304 S/S			
501	2	1	EA	12-023904	PROTECTOR, FLANGE 2"-150#	POLY			
801	1	1	GAL.	05-030553	PAINT, CARBOCOAT 150, GRAY	ALKYD			
802	1	1	GAL.	05-030568	THINNER, CARBOLINE #10				



ELEVATION
SCALE: 3"=12"



TRUE ORIENTATION
SCALE: 3"=12"

IF REQUIRED BY SALES ORDER, STAMP NAMEPLATE WITH CRN FOR PROVINCE:
ALBERTA:
SASKATCHEWAN:
BRITISH COLUMBIA:
ONTARIO:
CRN IS ONLY VALID TO 275 PSIG FROM -20 TO 100F WITH 1/16" CA.
*** SEE SALES ORDER**

CERTIFIED BY
PECOFacet (US), Inc.
MINERAL WELLS, TEXAS, U.S.A.

MAWP PSIG AT °F
MDMT °F AT PSIG
MAEWP PSI AT °F

SER. NO.

CA. INCH YR. BLT

MODEL

CLOSURE GASKET NO.

P.O. NO.

PECOFacet
For Service Call: 1-800-877-7326
Website: www.pecofacet.com

TAG NO. : *

REVISION						
REV	ECO	DATE	BY	CKD	ENGR	DESCRIPTION
0	--	7-29-02	C2M	GDC	BS	FIRST ISSUE (DWR#25786)
1	R11201	10-25-02	MRW	GDC	BS	REV. DIM. (DWR#26131)
2	R11206	10-31-02	MRW	GDC	BS	ADDED TEXT "RES" TO NAME PLATE (DWR# 26142)
3	R13456	5-03-06	JS	DAC	TAE	REVISED BOM (DWR# 30365)
4	--	5-6-08	NRG	BL	TAE	REVISED NAME PLATE, VESSEL MODEL (DWR# 33514)
5	--	06/24/10	DJB	DAC	TAE	REV. AS NOTED (DWR# 35487)
6	--	12-09-10	MWS	DAC	TAE	REVISE DWG. PER MARK-UP. (DWR# 35883)
7	--	02-09-11	MWS	SWD	RJG	REVISE DWG. TO ADD TEXT. REVISE TO 275 PSIG (DWR# 36021)
8	--	09/28/12	YZW	--	--	REV. TO REMOVE THE DOLETT CHANGE ITEM NO 29. TO 17315 (DWR# 37523)

ESTIMATED WEIGHTS	LBS.	KG
EMPTY	110	.
FULL OF WATER	170	.
OPERATING	.	.
QTY. REQ'D.:	*	
PROJECT NO.:	*	
CUSTOMER:	*	
P.O. NO.:	*	

PECOFacet
MINERAL WELLS, TEXAS
WWW.PECOFACET.COM

SERIES 89
MODEL: 89-1-312-6-275-2
VERTICAL FILTER SEPARATOR

DWG BY: C2M CHK BY: GDC SCALE: AS SHOWN
DATE: 7-29-02 DATE: 12/29/96 REV.: 8
READ DRAWING NO: 01-102915 D-100009

ALL DIMENSIONS ARE ± 1/8" (3 MM) UNLESS OTHERWISE NOTED.

THIS DRAWING IS THE PROPERTY OF PECOFACT (US), INC. IN CONSIDERATION OF THE USE OF THIS DRAWING, USER AGREES THAT IT SHALL BE TREATED AS CONFIDENTIAL MATERIAL, THAT IT SHALL BE RETURNED UPON REQUEST, AND THAT THE CONTENTS THEREOF SHALL NOT BE DISCLOSED, REPRODUCED, COPIED OR OTHERWISE DISPOSED OF DIRECTLY OR INDIRECTLY, NOR SHALL IT BE USED FOR ANY PURPOSE OTHER THAN THAT FOR WHICH IT IS SPECIFICALLY FURNISHED, EXCEPT BY WRITTEN PERMISSION OF PECOFACT (US), INC.