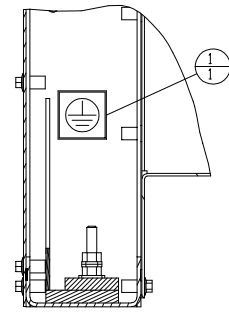
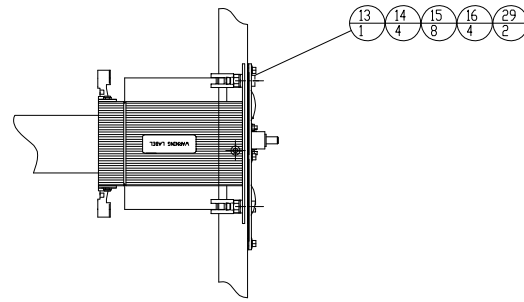


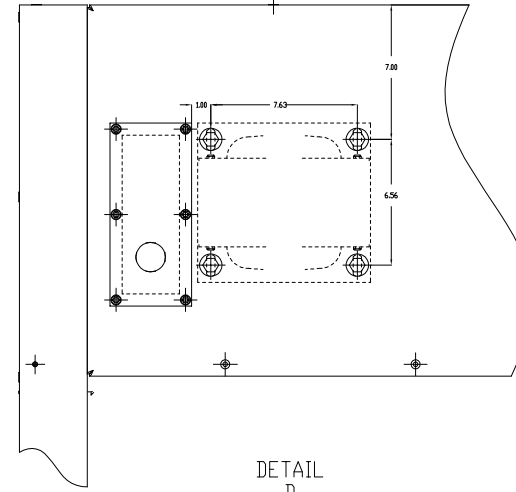
SECTION A-A  
SCALE 1:2  
(B6)



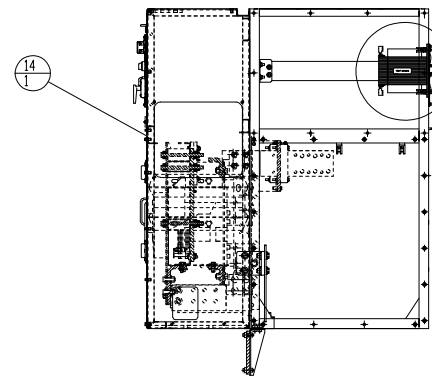
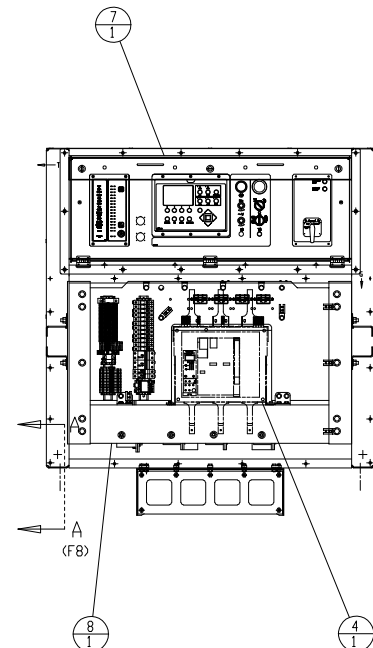
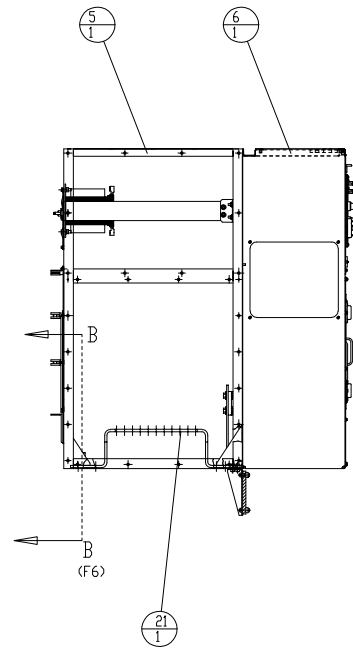
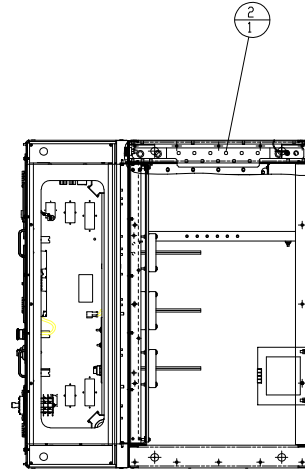
SECTION B-B  
SCALE 1:2  
(B8)



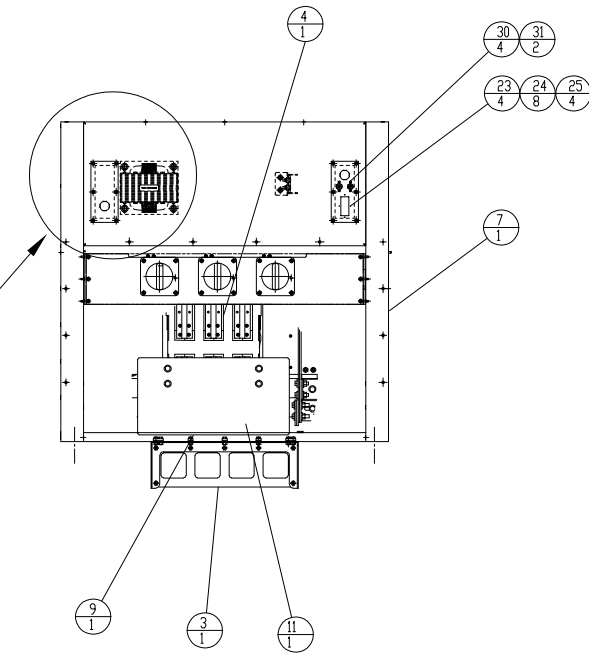
DETAIL C  
SCALE 3:1  
(C4)



DETAIL D  
SCALE 3:1  
(C2)



SEE DETAIL C  
(F5)



FRONT VIEW OF  
ENGINE

ITEM	QTY	MEAS UNIT	PART NO.	NAME
PARTS LIST				
1	1		228-4798	FILM-GROUND
2	1		307-3521	BUS BAR - GROUND
3	1		321-9047	SUPPORT GP-BRACE
4	1		352-7727	BREAKER AS
5	1		356-5634	BOX GP-BASIC
6	1		88E139	BOX GP - EXTENSION
7	1		88E142	BOX GP - CNTRL PANEL
8	1		88E163	MTG GP-BREAKER
9	1		369-3273	GUARD AS
10	2		5C-7261	NUT-HEX M8X1.25
11	1		5P-4116	WASHER-HARD
12	2		8T-4224	WASHER-HARD
A	13		9070T5000D31	TRANSFORMER
D	14	4	8T-4136	BOLT M10x1.5 - 25 Lg
D	15	8	8T-4121	WASHER-HARD
D	16	4	8T-0389	LOCKNUT - M10x1.5
B	17	1	86E133	HARNESS AS. GEN AC TO CDVR
B	18	1	86E150	HARNESS AS. AC SENSING
B	19	1	88E167	HARNESS AS. MAIN DC
B	20	1	88E168	HARNESS AS. MAIN AC
B	21	1	88E186	CONNECTION GP - OMEGA BAR
B	22	40	3S-2093	STRAP - CABLE
	23	4	156-6451	SCREW-MACHINE 8-32x1
	24	8	096-6166	WASHER-FLAT
	25	4	6D-5801	LOCKNUT - 8-32
C	26	4	235-4451	BOLT M6x1 - 16 Lg
B	27	1	376-4734	HARNESS AS. - SUPPRESSOR
B	28	1	358-6989	DIODE AS.
	29	2	132-5789	CLIP - LADDER
	30	4	RW4440020SS0000	WASHER - 3/8" SS
	31	2	012-9158	LOCKNUT - 3/8" SS

NOTE A: HAND DRILL MOUNTING HOLES FOR TRANSFORMER  
 NOTE B: NOT SHOWN ON DRAWING FOR CLARITY  
 NOTE C: FOR USE WITH MOUNTING J11 CONNECTOR TO TRANSITION BOX  
 NOTE D: PUNCH MOUNTING HOLES FOR TRANSFORMER USING MOUNTING HOLE TEMPLATE

2/28/14 PBP	2/18/14 DIR	2/18/14 DIR	2/18/14 DIR	2/18/14 DIR
3	2	1	1	1
MOVE GENERATOR LEAD HW TO DIFFERENT GROUP DWG	ADDED BATTERY POST HW & HARDWARE	ADDED OMEGA BAR HARDWARE	CHANGE NOTICE	NO.
<b>ALTORFER POWER SYSTEMS</b> 6315 W. FAUBER RD. BARTONVILLE, IL 61807 PHONE (309) 697-1234 FAX (309) 282-7546				
THIS DOCUMENT CONTAINS PROPRIETARY INFORMATION OF ALTORFER, INC. WITHOUT THE WRITTEN PERMISSION OF ALTORFER, INC., ANY COPYING OR OTHER USE EXCEPT THAT FOR WHICH IT WAS INTENDED IS PROHIBITED.				
ALL DIMENSIONS IN INCHES UNLESS OTHERWISE SPECIFIED TOLERANCES: XX ± 0.100 XXX ± 0.060 XXXX ± 0.005 ANGULAR ± 1°		FILE DF\88E SCALE/SHEET SIZE 1=15/D SHEET 1 OF 1		
THIRD ANGLE PROJECTION 		PROJECT REFERENCE APS2000 DRAWN BY D. RICHARDSON DATE 2/18/2013 WORK ORDER NUMBER 0 DRAWING NUMBER 88E101-03		
DOGHOUSE GROUP				