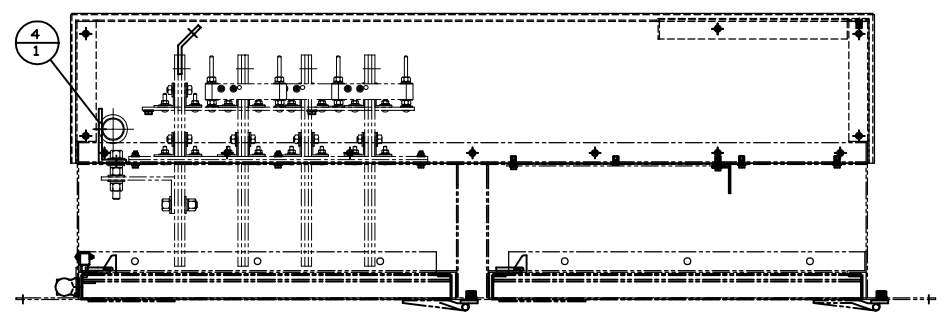
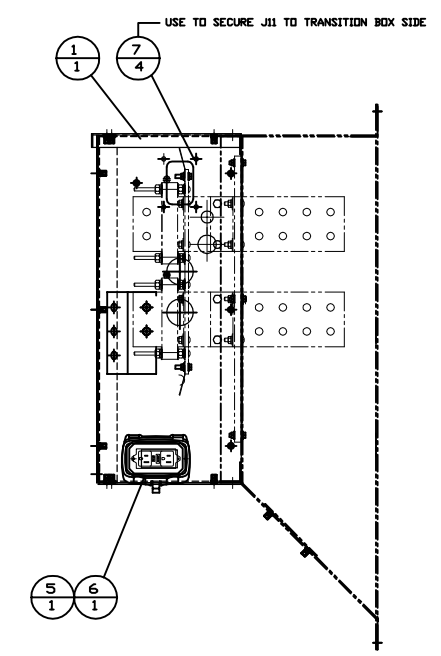
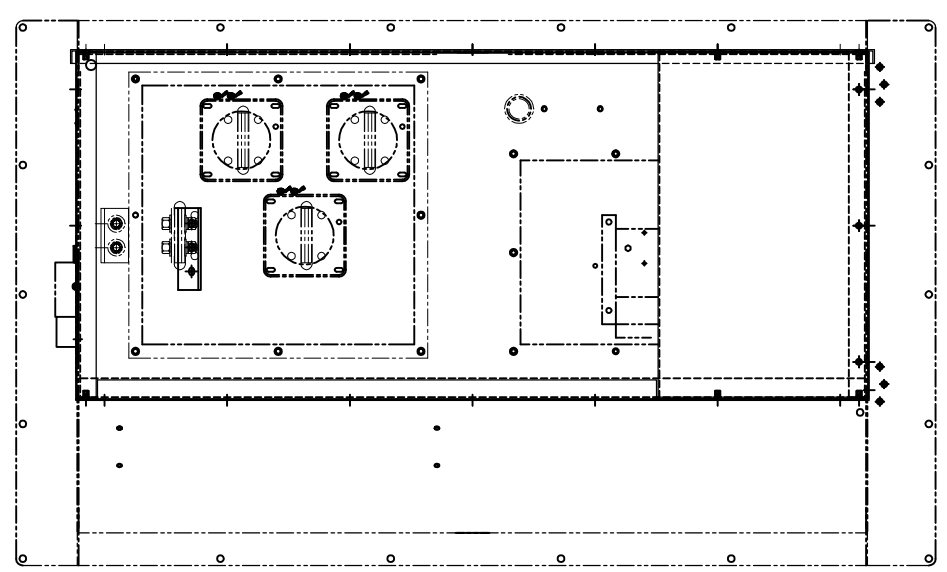
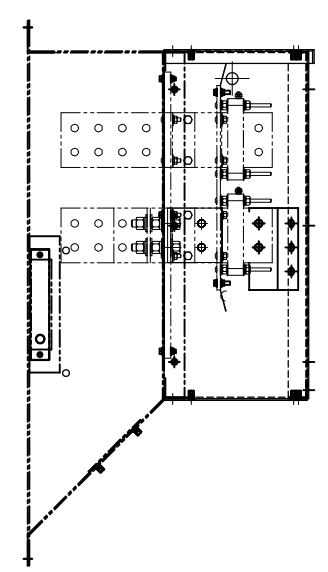
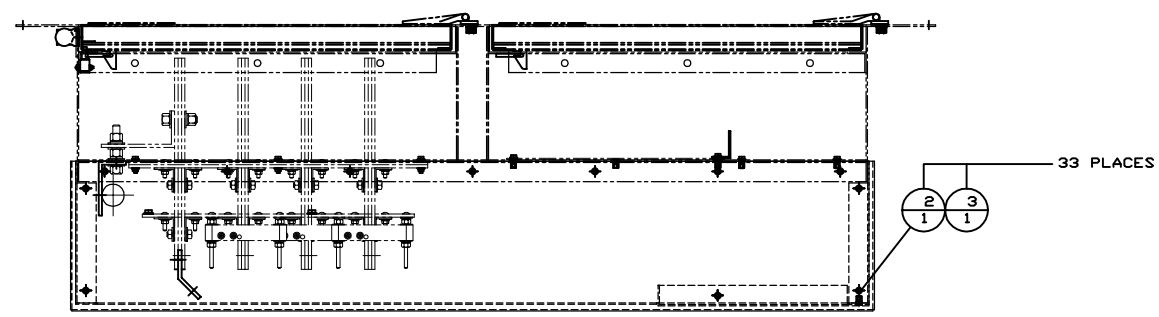


ITEM	QTY.	P/N	DESCRIPTION
1	1	88E119-02	TRANSITION BOX GROUP
2	33	4M-5281	BOLT 1/4x20 - 3/4 Lg
3	33	8T-4205	WASHER - FLAT
4	1	4D-3100	GROMMET
5	1	WP1000HC	COVER - RECEPTACLE
6	1	7899-W	RECEPTACLE
7	4	254-4451	BOLT - FLANGE



2/18/2014 DKR	3/5/2013 DKR	DATE	<b>ALTORFER</b>		<b>ALTORFER POWER SYSTEMS</b>	
ADD CONDUIT HOLE FOR PL421 ANTENNAE		PROTOTYPE UPDATE	6315 W. FAUBER RD. BARTONVILLE, IL 61607		PHONE (309) 697-1234 FAX (309) 282-7546	
CHANGE NOTICE	NO.	FILE	THIS DOCUMENT CONTAINS PROPRIETARY INFORMATION OF ALTORFER, INC. WITHOUT THE WRITTEN PERMISSION OF ALTORFER, INC., ANY COPYING OR OTHER USE EXCEPT THAT FOR WHICH IT WAS INTENDED IS PROHIBITED			
		DF/88A	ALL DIMENSIONS IN INCHES UNLESS OTHERWISE SPECIFIED			
		SCALE/SHEET SIZE	PROJECT REFERENCE		APS2000	
		1=10/C	DRAWN BY		QUOTE NUMBER	
		SHEET	D. RICHARDSON		0	
		1 OF 1	DATE		WORK ORDER NUMBER	
			2/6/2013		0	
			TITLE		DRAWING NUMBER	
			TRANSITION BOX INSTALLATION GROUP		88A121-02	