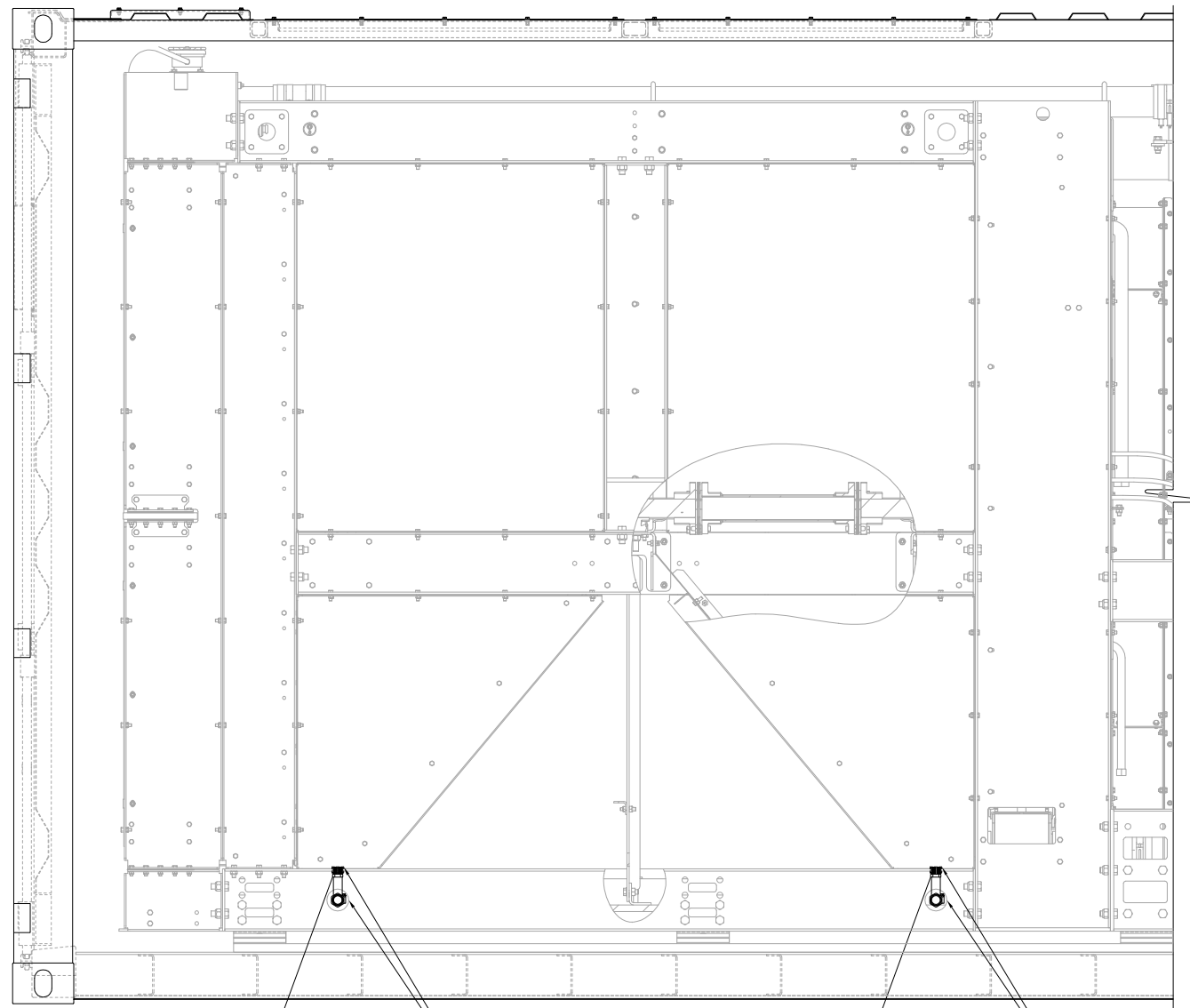


ITEM	QTY.	P/N	DESCRIPTION
1	4	9431K34	BRONZE BARBED HOSE FITTING-90° ELBOW
2	4	9431K14	BRONZE BARBED HOSE FITTING-STRAIGHT
3	4	88C173	DRAINS COVER PLATE
4	122CM	5P-1251	HOSE BULK-1" I.D. (48.00')
5	8	9M-7958	CLAMP-HOSE
6	16	235-4451	BOLT-M6X1



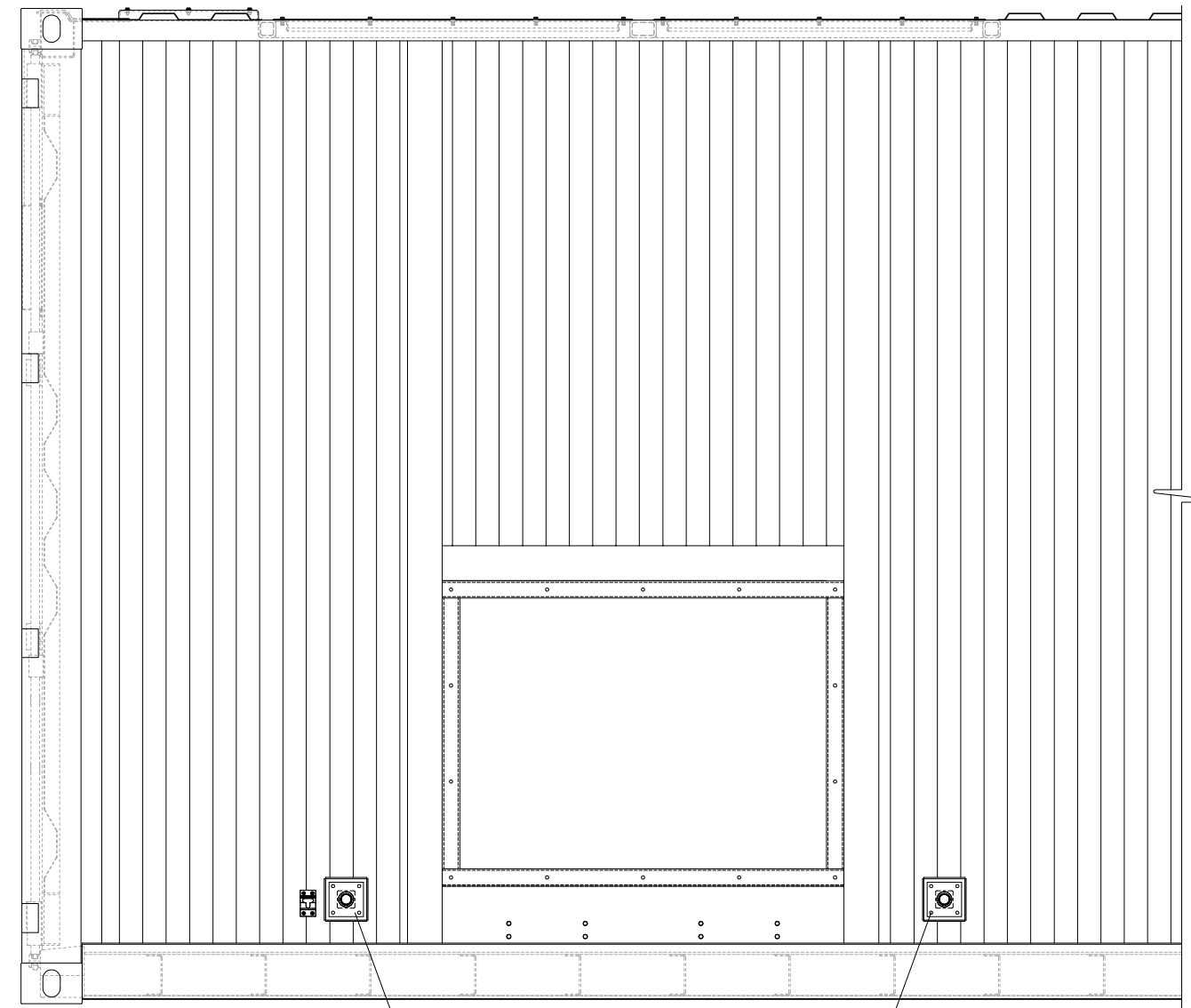
NOTE A
5 4 1
1 12" 1

NOTE A
5 4 1
1 12" 1

REF. 1" NPT HALF COUPLING INSIDE TURN DUCT.
CONNECT ELBOW FROM BOTTOM SIDE AND ROUTE HOSE THROUGH HOLE PROVIDED.

REF. 1" NPT HALF COUPLING INSIDE TURN DUCT.
CONNECT ELBOW FROM BOTTOM SIDE AND ROUTE HOSE THROUGH HOLE PROVIDED.

CURBSIDE PARTIAL SIDE VIEW (WALLS REMOVED FOR CLARITY)



NOTE B
2 5 6
1 1 4

NOTE B
6 5 2
4 1 1

NOTE B

NOTE B

CURBSIDE PARTIAL SIDE VIEW

NOTE A: STREETSIDE DIVERTER DRAINS (NOT SHOWN) SHALL BE INSTALLED WITH THE SAME METHOD AS CURBSIDE DIVERTER DRAINS SINCE THE DESIGN IS SYMMETRICAL.
NOTE B: INSTALL STRAIGHT NIPPLE BARB (ITEM#2) TO HALF COUPLING IN DRAIN COVER PLATE.
NOTE C: INSTALL THREAD SEALANT ON ALL THREADED CONNECTIONS

		ALTORFER POWER SYSTEMS 6315 W. FAUBER RD. PHONE (309) 697-1234 BARTONVILLE, IL 61607 FAX (309) 282-7546		
		THIS DOCUMENT CONTAINS PROPRIETARY INFORMATION OF ALTORFER, INC. WITHOUT THE WRITTEN PERMISSION OF ALTORFER, INC., ANY COPYING OR OTHER USE EXCEPT THAT FOR WHICH IT WAS INTENDED IS PROHIBITED.		
CHANGE NOTICE X.X ± 0.100 X.XX ± 0.060 X.XXX ± 0.005 ANGULAR ± 1°	ALL DIMENSIONS IN INCHES UNLESS OTHERWISE SPECIFIED	FILE DF/88A	PROJECT REFERENCE APS2000	
	TOLERANCES: X.X ± 0.100 X.XX ± 0.060 X.XXX ± 0.005	THIRD ANGLE PROJECTION	SCALE/SHEET SIZE 1=10/D SHEET 1 OF 1	DRAWN BY JAM
	DATE 05-16-13	QUOTE NUMBER -	WORK ORDER NUMBER -	DRAWING NUMBER 88A114
	TITLE DIVERTER DRAINS MOUNTING GROUP			