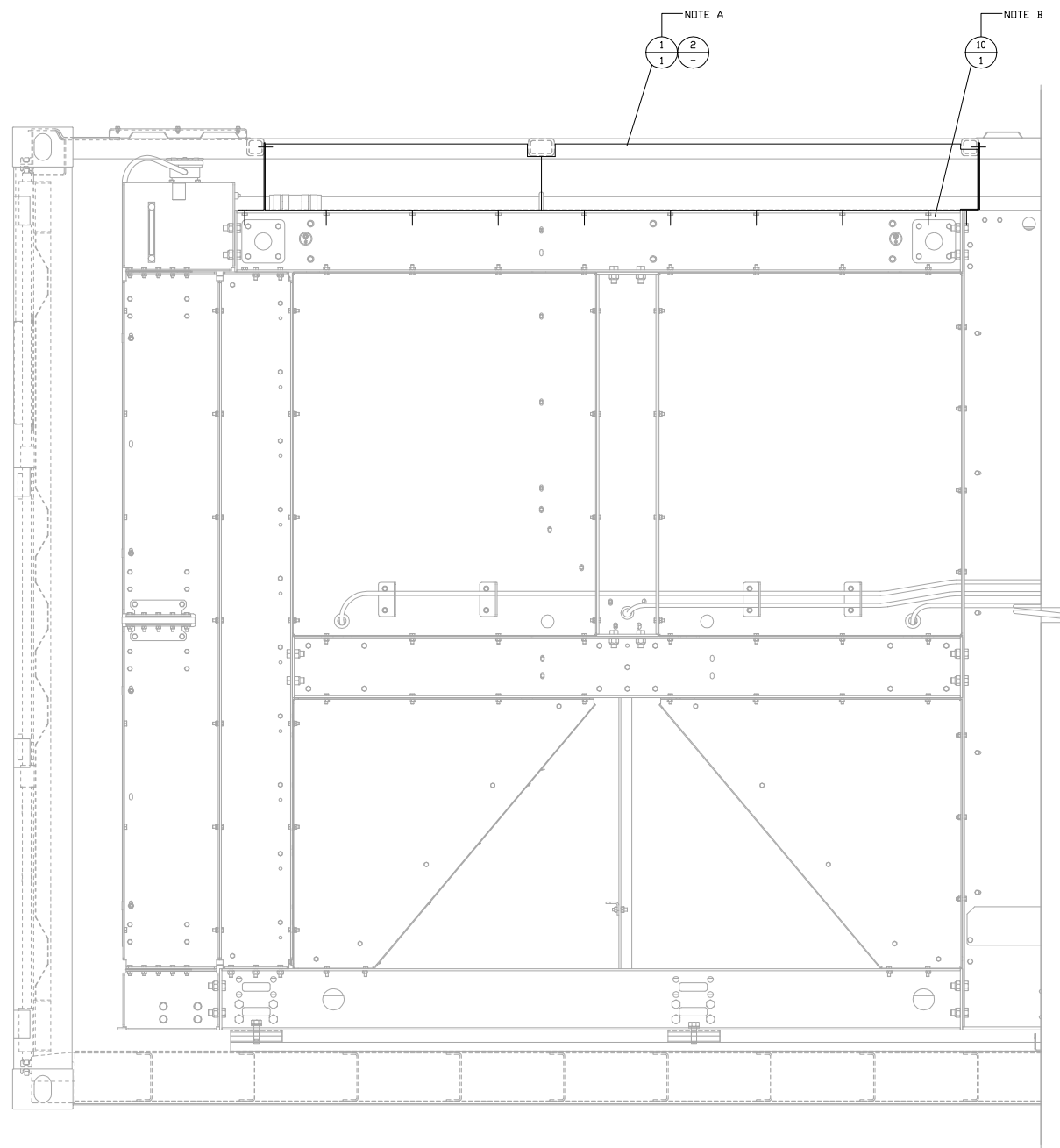
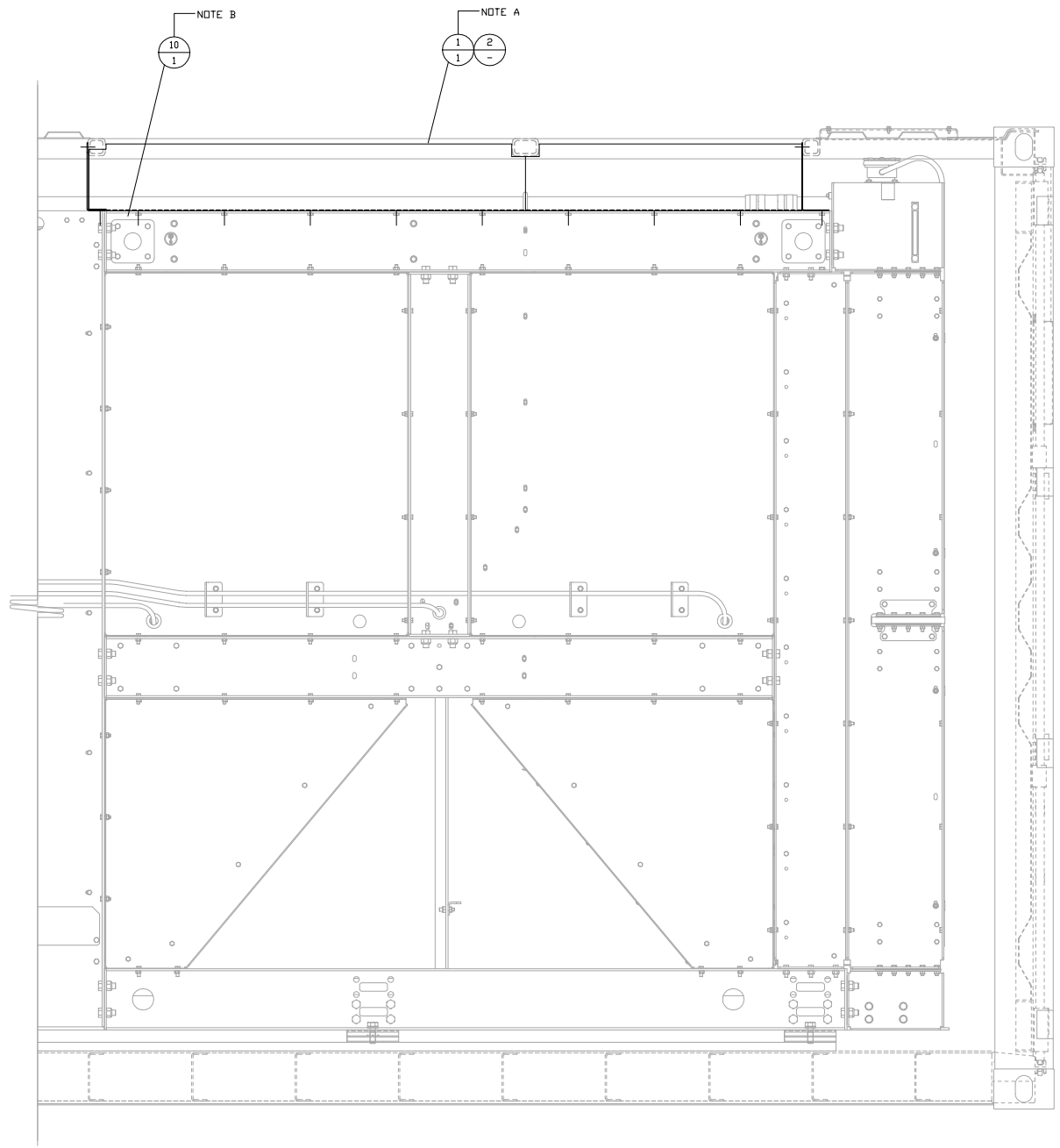


ITEM	QTY.	P/N	DESCRIPTION
1	1	88C146	-DIVERTER SIDE FLASHING GROUP
2	1	88C149	-DIVERTER FLASHING GROUP-JWH & CAC
3	30	317-5700-1/4"	NEOPREME WASHER
4	30	96024A430-1/4"-20	THREAD CUTTING BOLT-HEX HEAD
5	26	8T-4908-M8X1.25	BOLT
6	26	377-4313	NEOPREME WASHER
7	1	DSILICONE CAULK-SILICONE	SEALANT-CLEAR
8	1	0221243-SIKAFLEX	SEALANT-BLACK
9	1	8S-7583	- GROMMET
10	2	88C223	- LIFT-EYE FLASHING



CURBSIDE VIEW (WALLS REMOVED FOR CLARITY)



STREETSIDE VIEW (WALLS REMOVED FOR CLARITY)

NOTE A: APPLY CLEAR SILICONE SEALANT AT ALL ALUMINUM FLASHING SEAMS.  
 NOTE B: INSTALL 88C223 FROM INSIDE TURN DUCT TO COVER LIFT-EYE HOLE NEAR CAC CORE.

11-25-13 JAN	10-14-14 JAN	08-14-14 JAN	07-03-13 JAN	DATE BY	<b>ALTORFER POWER SYSTEMS</b> 6315 W. FAUBER RD. PHONE (309) 697-1234 BARTONVILLE, IL 61607 FAX (309) 282-7546
4	3	2	1	REV.	
ITEMS #2 & #5 & #6	ITEM #10 ADDED	ITEMS #14 & #19	REDESIGN	CHANGE NOTICE	THIS DOCUMENT CONTAINS PROPRIETARY INFORMATION OF ALTORFER, INC. WITHOUT THE WRITTEN PERMISSION OF ALTORFER, INC., ANY COPYING OR OTHER USE EXCEPT THAT FOR WHICH IT WAS INTENDED IS PROHIBITED. ALL DIMENSIONS IN INCHES UNLESS OTHERWISE SPECIFIED TOLERANCES: .XX ± 0.100 X.XX ± 0.060 XXX ± 0.005 ANGULAR ± 1°
FILE	PROJECT REFERENCE	SCALE/SHEET SIZE	DRAWN BY	QUOTE NUMBER	
DF/88A	APS2000	1=10/D	JAM	-	
THIRD ANGLE PROJECTION	DATE	SHEET	WORK ORDER NUMBER	-	
1 OF 1	05-14-13	1 OF 1	-	-	
TITLE				DRAWING NUMBER	
DIVERTER FLASHING GROUP				88A111-4	