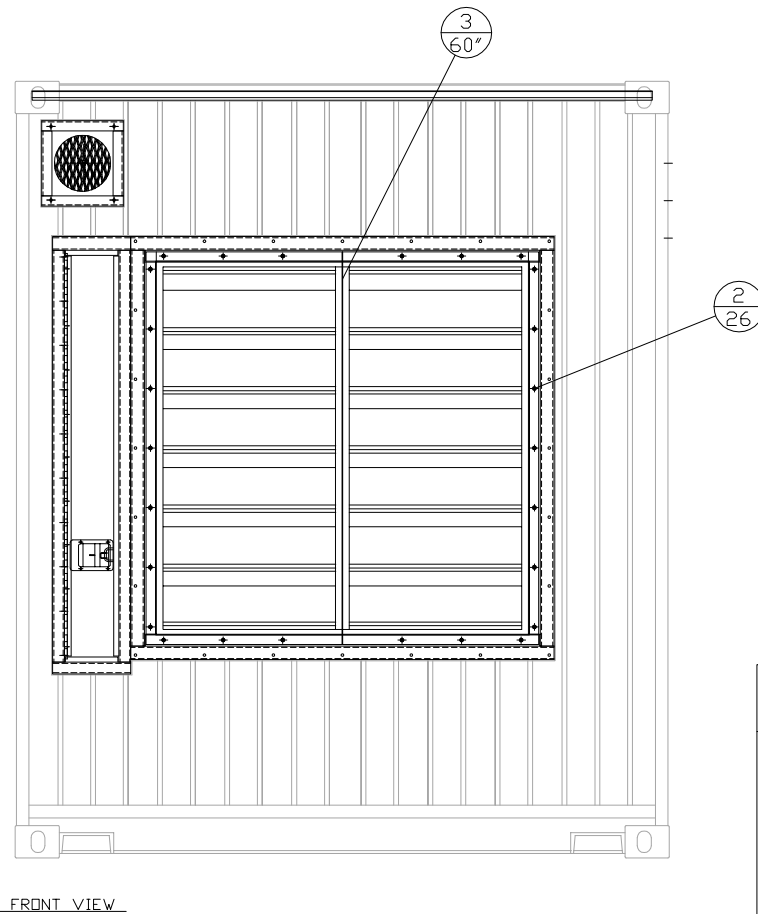
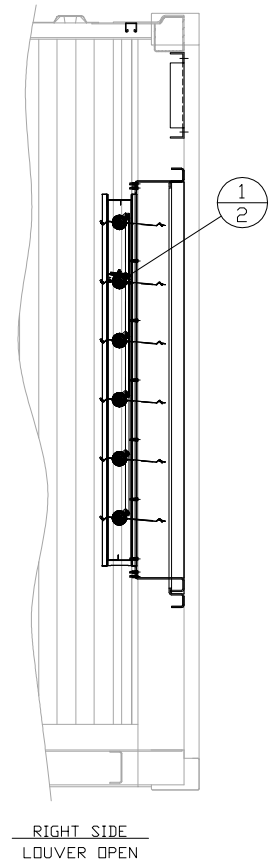
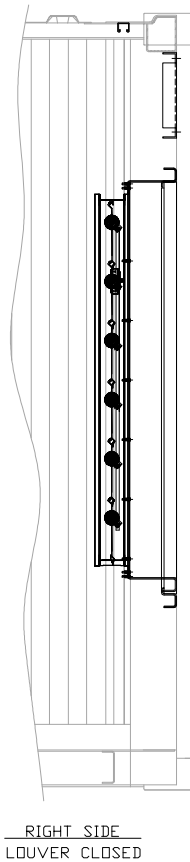
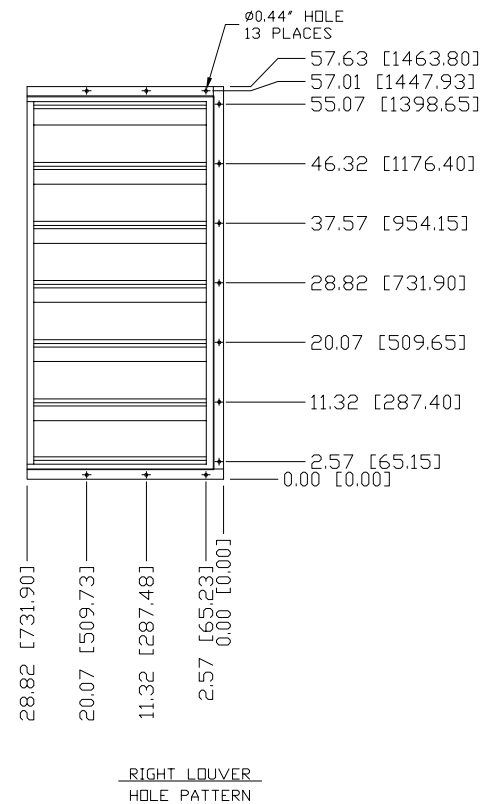
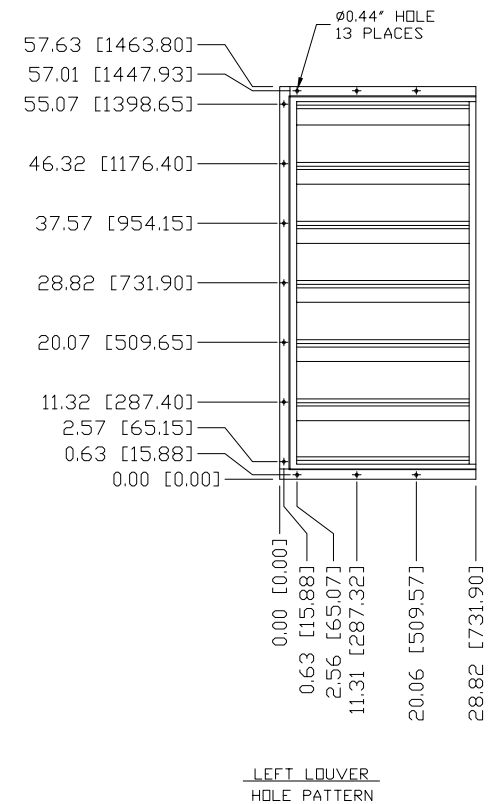
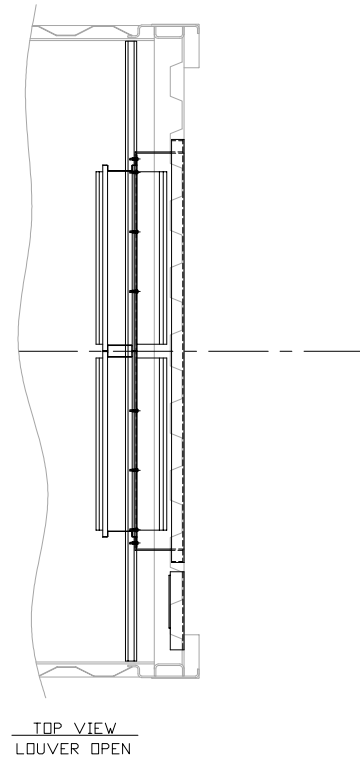


ITEM	QTY.	PART NO.	DESCRIPTION	WEIGHT
1	2	DPS10151	S.S. WEIGHTED BACKDRAFT LOUVER	XX
2	26	97646A115	1/4"-20x1" S.S. FLANGED BOLT	XX
3	60'	3E6600	TRIM BLACK	XX



		ALTORFER POWER SYSTEMS 6315 W. FAUBER RD. PHONE (309) 697-1234 BARTONVILLE, IL 61607 FAX (309) 282-7546		
		THIS DOCUMENT CONTAINS PROPRIETARY INFORMATION OF ALTORFER, INC. WITHOUT THE WRITTEN PERMISSION OF ALTORFER, INC., ANY COPYING OR OTHER USE EXCEPT THAT FOR WHICH IT WAS INTENDED IS PROHIBITED.		
CHANGE NOTICE NO. 1	DATE BY	FILE	PROJECT REFERENCE	
		DF/B7A	AMP500 RENTAL PACKAGE	
	TOLERANCES: XX ± 0.100 XXX ± 0.060 XXXX ± 0.005	THIRD ANGLE PROJECTION	SCALE/SHEET SIZE 1=20/C	DRAWN BY BML
	ANGULAR ± 1°	SHEET 1 OF 1	DATE 05/16/13	QUOTE NUMBER -
TITLE MOUNTING GROUP - DISCHARGE LOUVER			WORK ORDER NUMBER -	
			DRAWING NUMBER 87A222	