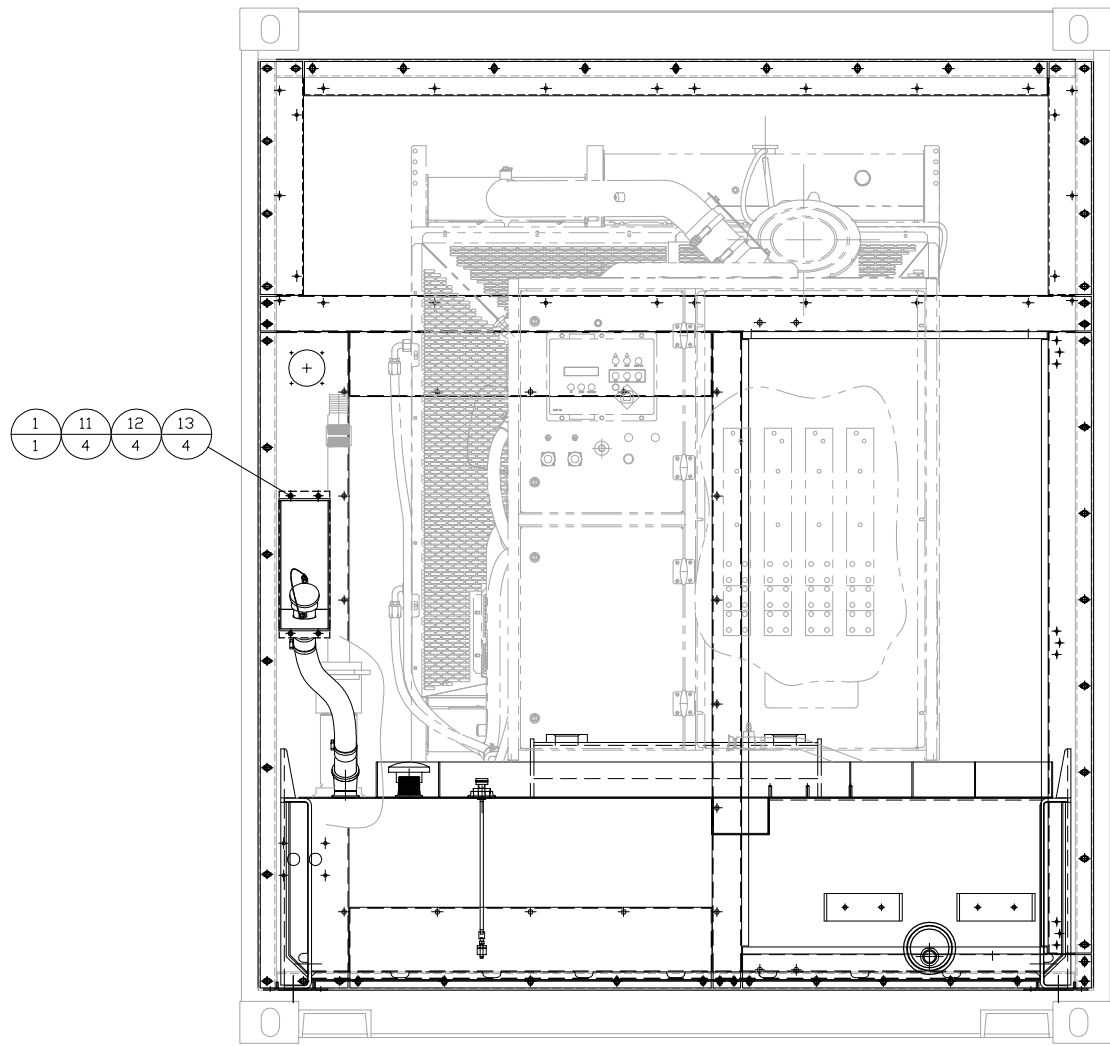
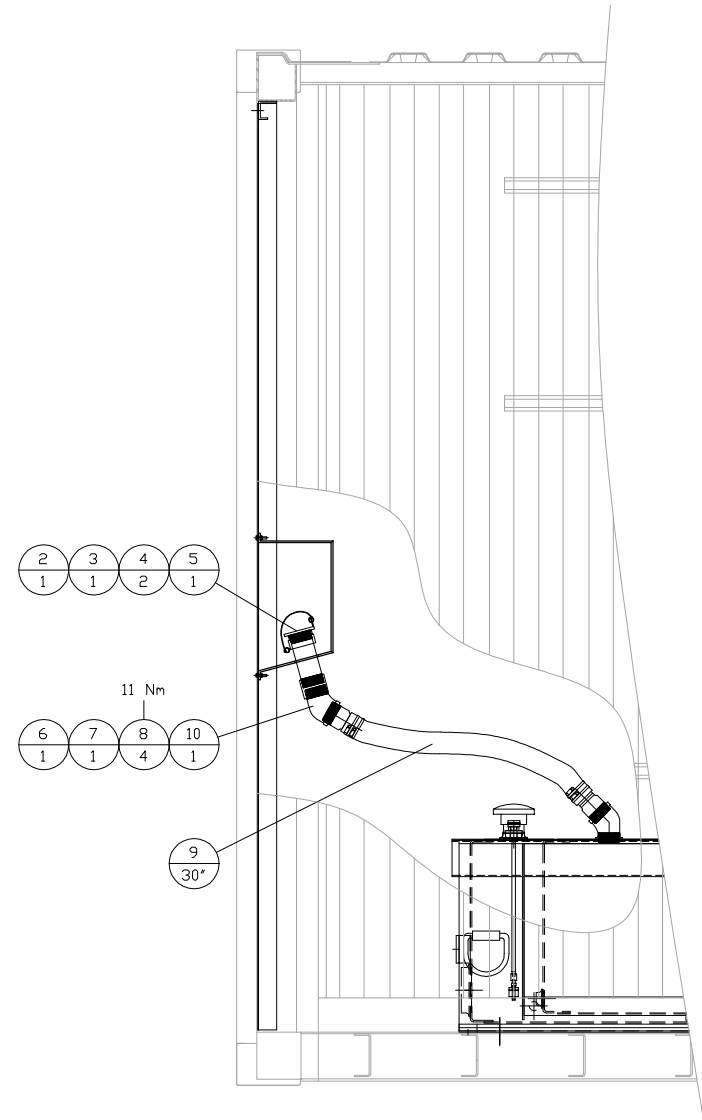


ITEM	QTY.	PART NO.	DESCRIPTION	WEIGHT
1	1	87C204-1	FUEL FILL BRACKET ASSEMBLY	19
2	1	MDR305C	2" TOP SEAL CAP	X
3	1	MDR305-0000AA	2" BRASS TIGHT FILL ADAPTER	X
4	2	9090JA655	KEY RING	X
5	1	30345T36	LANYARD	X
6	1	PP2C	2" COUPLING	X
7	1	5363K46	2" BARBED FITTING	X
8	4	8T-4984	3" HOSE CLAMP	X
9	30'	GDY2FLEX	HOSE	X
10	1	PSE2-45	2" 45° STREET ELBOW	X
11	4	97646A115	1/4"-20x1" S.S. BOLT	X
12	4	37337	1/4"-20 FLANGED NUT	X
13	4	96659A106	1/4" S.S. WASHER	X



REAR VIEW



RIGHT SIDE

NOTE A: USE PIPE SEALANT ON ALL NPT PIPE FITTINGS

		ALTORFER POWER SYSTEMS 6315 W. FAUBER RD. PHONE (309) 697-1234 BARTONVILLE, IL 61607 FAX (309) 282-7546		
		THIS DOCUMENT CONTAINS PROPRIETARY INFORMATION OF ALTORFER, INC. WITHOUT THE WRITTEN PERMISSION OF ALTORFER, INC., ANY COPYING OR OTHER USE EXCEPT THAT FOR WHICH IT WAS INTENDED IS PROHIBITED.		
CHANGE NOTICE X.X ± 0.100 X.XX ± 0.050 X.XXX ± 0.005 ANGULAR ± 1°	ALL DIMENSIONS IN INCHES UNLESS OTHERWISE SPECIFIED	FILE DF/87A	PROJECT REFERENCE AMP500 RENTAL PACKAGE	
	TOLERANCES: X.XX ± 0.100 X.XXX ± 0.005 ANGULAR ± 1°	THIRD ANGLE PROJECTION	SCALE/SHEET SIZE 1=15/C	DRAWN BY BML
	SHEET 1 OF 1	DATE 05/02/13	QUOTE NUMBER -	WORK ORDER NUMBER -
	TITLE MOUNTING GROUP - FUEL FILL (EXTERNAL)	DRAWING NUMBER 87A220		