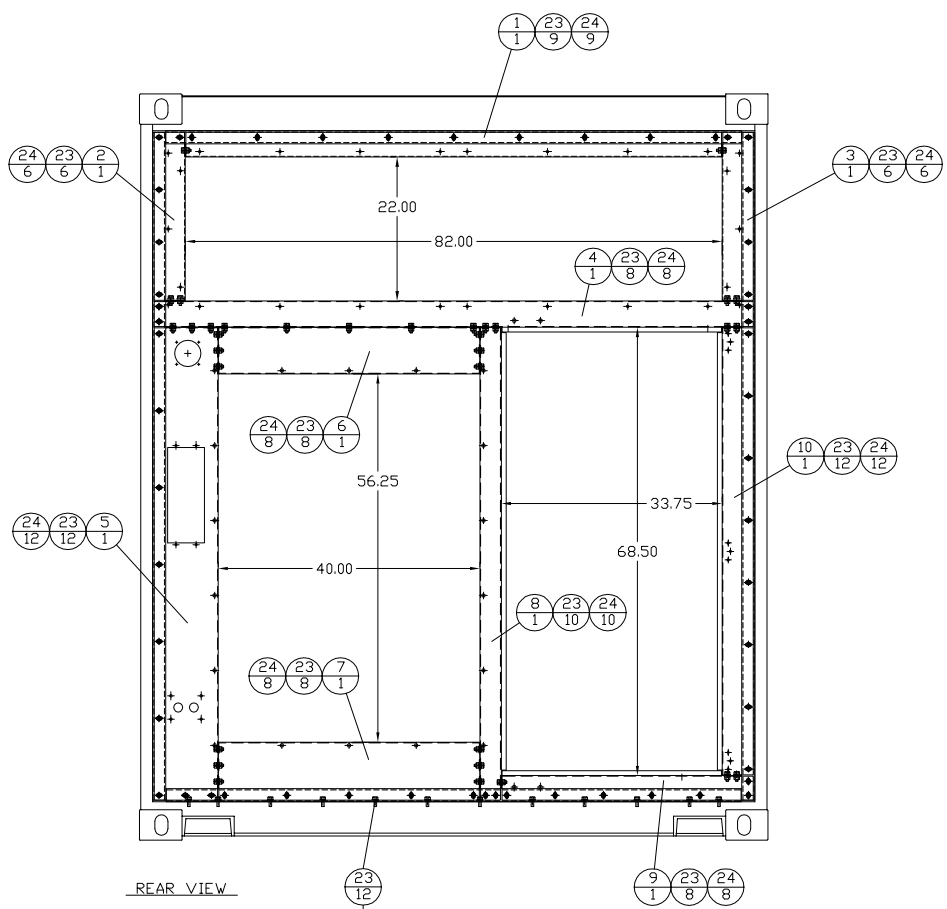
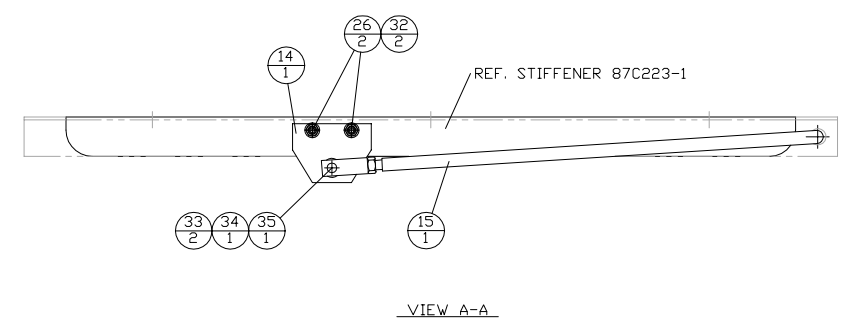
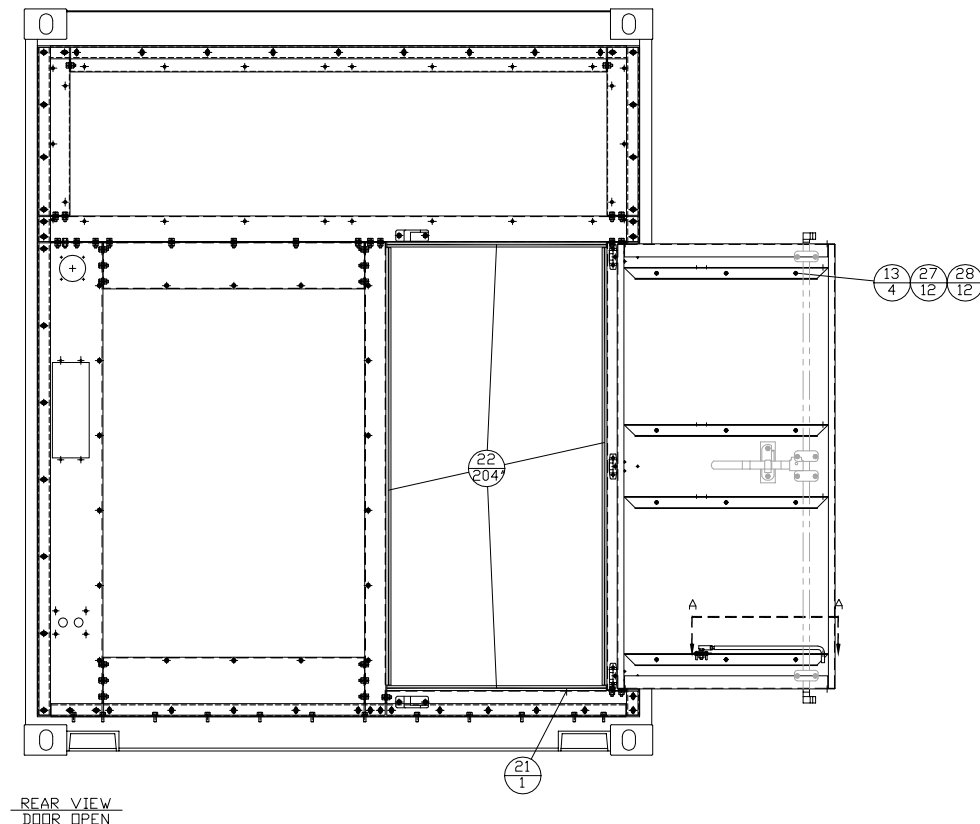
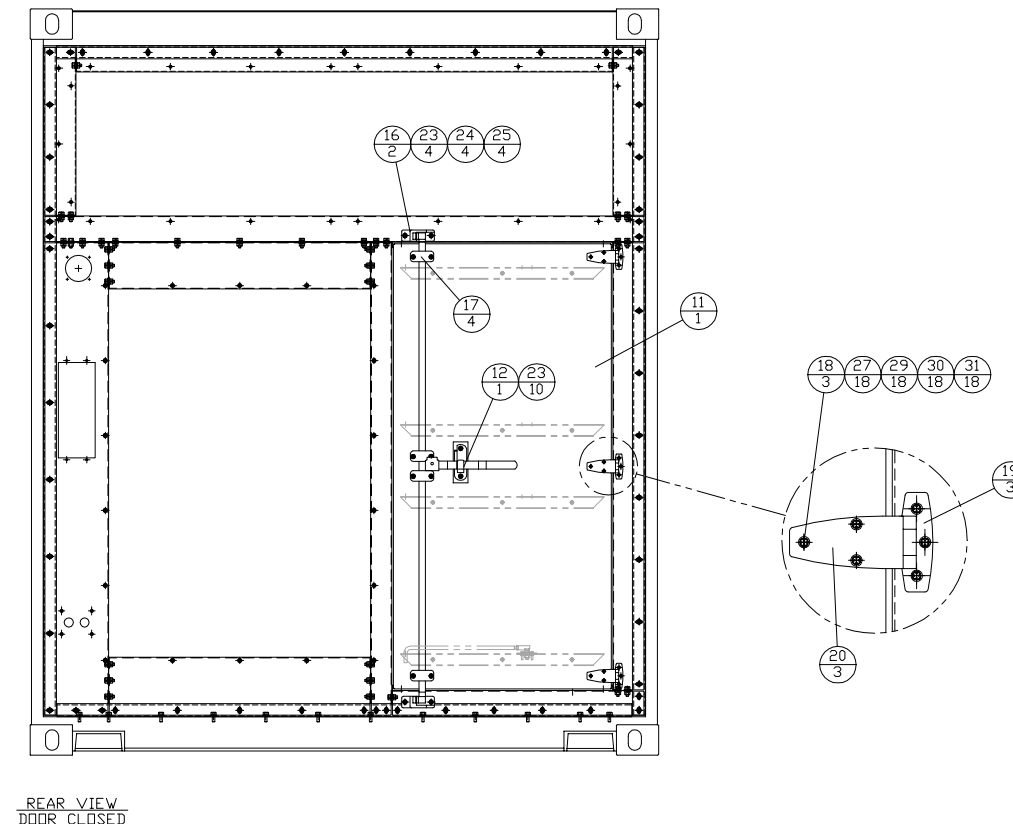


ITEM	QTY.	PART NO.	DESCRIPTION	WEIGHT
1	1	87C205-1	DAMPER TOP REAR	14
2	1	87C206-1	DAMPER LEFT REAR	5
3	1	87C207-1	DAMPER RIGHT REAR	5
4	1	87C208-1	DAMPER BOTTOM REAR	21
5	1	87C209-1	ESL PANEL LEFT REAR	23
6	1	87C210-1	ESL PANEL TOP REAR	13
7	1	87C211-1	ESL PANEL BOTTOM REAR	13
8	1	87C212-1	ESL PANEL RIGHT REAR	16
9	1	87C213-1	DOOR PANEL BOTTOM REAR	7
10	1	87C214-1	DOOR PANEL RIGHT REAR	15
11	1	87C221-1	ACCESS DOOR	89
12	1	87C222	LATCH KIT-ACCESS DOOR	11
13	4	87C223-1	STIFFENER-ACCESS DOOR	16
14	1	87C244	BRACKET-DOOR KEEP	-
15	1	5W-4315	ROD ASSEMBLY-DOOR KEEP	-
16	2	87C246	GASKET-ACCESS DOOR LATCH CAMS	-
17	4	48C362	GASKET-CEM DOOR ROD MOUNTS	-
18	3	317-5796	BLACK HINGE-DOOR	-
19	3	317-5797	GASKET-HINGE WALL (ALT# 54D147)	-
20	3	317-5798	GASKET-HINGE DOOR (ALT# 54D146)	-
21	1	3P-9554	GROMMET	-
22	204	D2685	SEAL-DOOR (WHITE)	-
23	113	97646A220	3/8"-16x1" S.S. FLANGED BOLT	-
24	91	198-2970	3/8"-16 FLANGED NUT	-
25	4	33167	3/8" NEOPREME WASHER	-
26	2	97646A115	1/4"-20x1" S.S. FLANGED BOLT	-
27	30	317-5700	1/4" S.S. NEOPREME WASHER	-
28	12	93776A421	1/4"-20 S.S. FLANGED NUT	-
29	18	317-5697	1/4"-20x1" S.S. COUNTERSINK SCREW	-
30	18	6V-8185	1/4"-20 NUT	-
31	18	317-5698	1/4" S.S. LOCKWASHER	-
32	2	37337	1/4"-20 FLANGED NUT	-
33	2	94709A516	3/8" S.S. BONDED SEALING WASHER	-
34	1	71067	3/8" S.S. LOCK WASHER	-
35	1	70732	3/8"-24 S.S. NUT	-
TOTAL				248



INSTALL BOTTOM WELD FRAME BEFORE INSTALLING BULKHEAD ASSEMBLY



<p>ALTORFER</p> <p>6315 W. FAUBER RD. PHONE (309) 697-1234 BARTONVILLE, IL 61607 FAX (309) 282-7546</p>		<p>ALTORFER POWER SYSTEMS</p>	
<p>THIS DOCUMENT CONTAINS PROPRIETARY INFORMATION OF ALTORFER, INC. WITHOUT THE WRITTEN PERMISSION OF ALTORFER, INC., ANY COPYING OR OTHER USE EXCEPT THAT FOR WHICH IT WAS INTENDED IS PROHIBITED.</p>			
<p>ADDED HARDWARE</p> <p>CHANGE NOTICE</p> <p>TOLERANCES: .XX ± 0.100 .XXX ± 0.060 .XXXX ± 0.005</p>	<p>FILE</p> <p>DF/87A</p> <p>SCALE/SHEET SIZE</p> <p>1=15/D</p> <p>SHEET</p> <p>1 OF 1</p>	<p>PROJECT REFERENCE</p> <p>AMP500 RENTAL PACKAGE</p> <p>DRAWN BY</p> <p>BML</p> <p>DATE</p> <p>05/07/13</p>	<p>QUOTE NUMBER</p> <p>0</p> <p>WORK ORDER NUMBER</p> <p>0</p> <p>DRAWING NUMBER</p> <p>87A219-1</p>
<p>TITLE</p> <p>MOUNTING GROUP - BULKHEAD</p>			<p>DATE</p> <p>07/29/13</p>