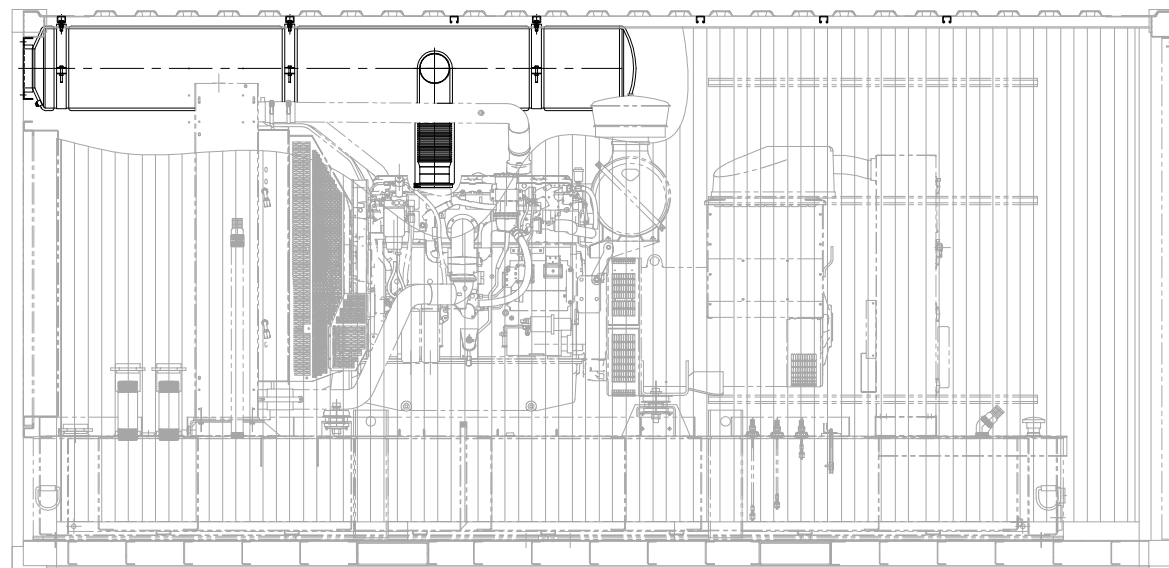
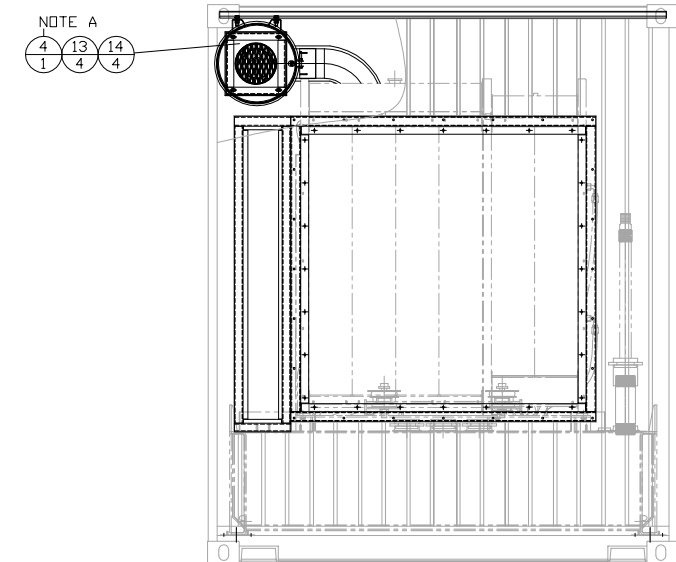
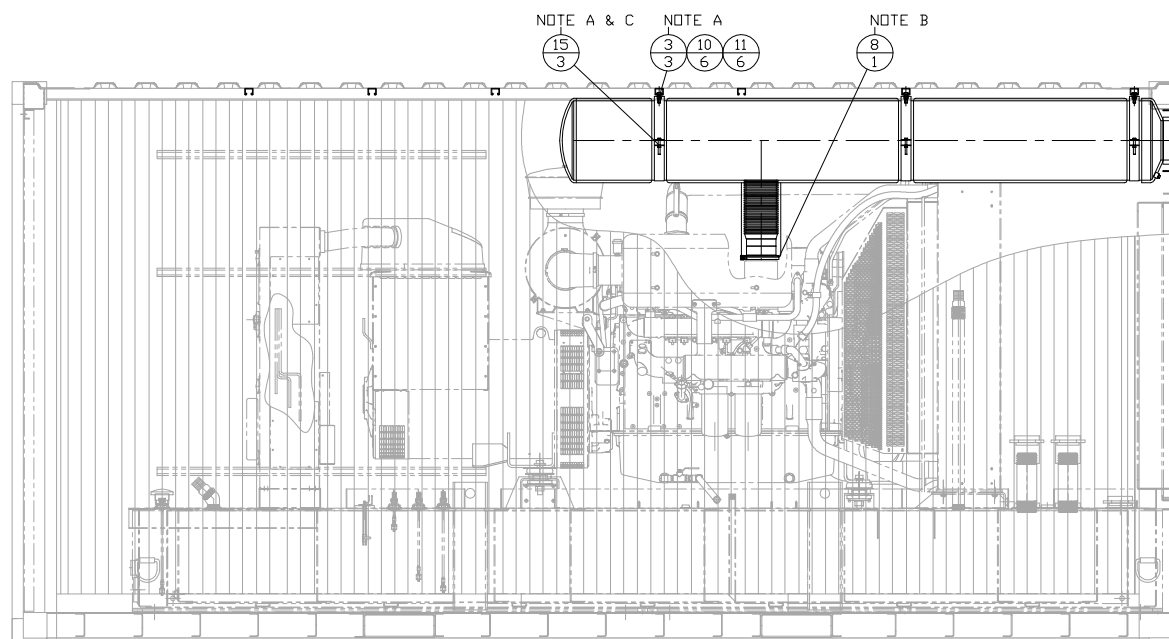
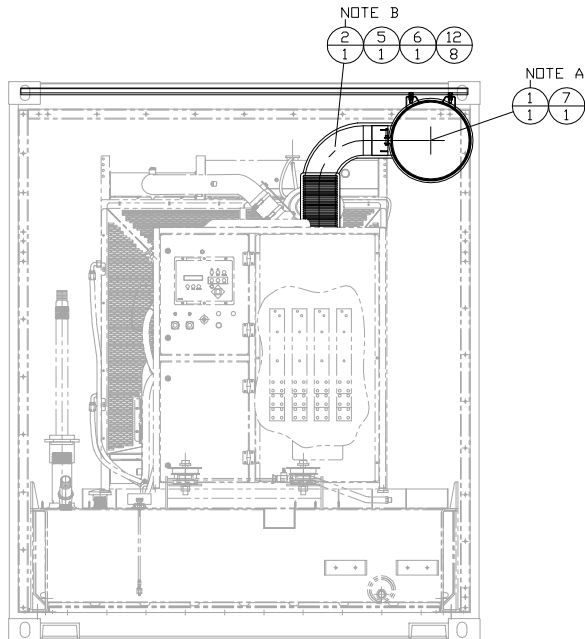
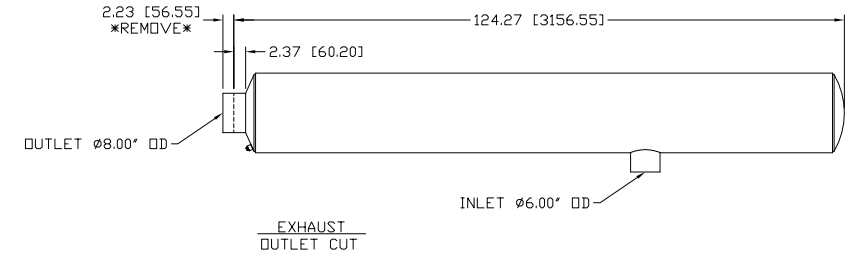
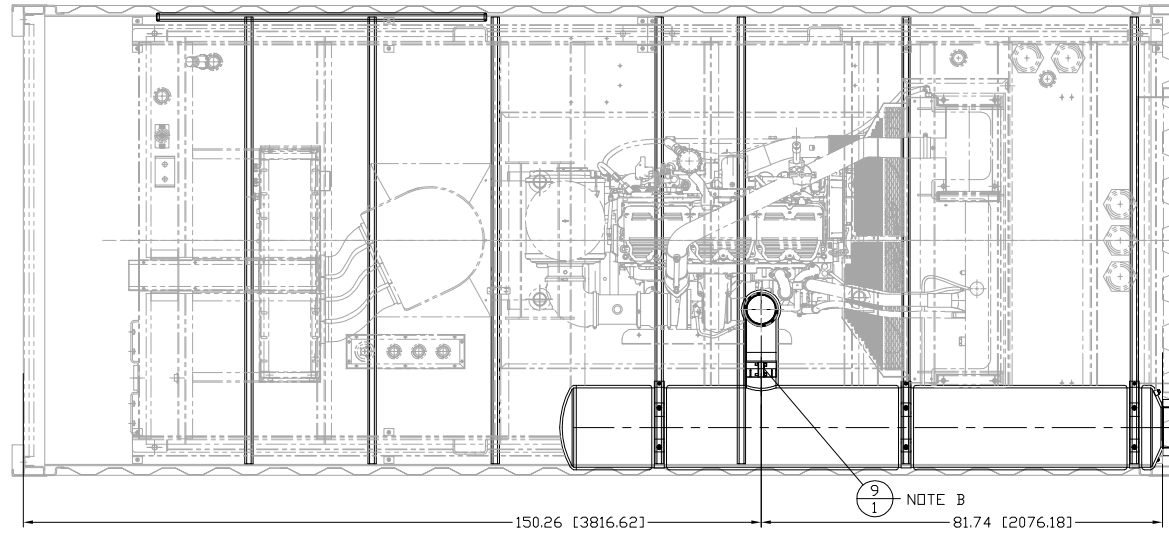


ITEM	QTY.	PART NO.	DESCRIPTION	WEIGHT
1	1	JCS-08X-90017542	EXHAUST - S.S. CRITICAL GRADE SILENCER	-
2	1	FLEX-06X-90017318	EXHAUST - S.S. FLEX	-
3	3	RMB-16X-90017323	EXHAUST - S.S. MOUNTING BAND	-
4	1	87C247	EXHAUST COVER ASSEMBLY	-
5	1	00-FLEX	BLANKET FLEX	-
6	1	00-ELBOW	BLANKET - ELBOW	-
7	1	00-SILENCER	BLANKET - SILENCER	-
8	1	247-3393	CLAMP - (TURBD)	-
9	1	61-04-06	CLAMP 6" (SILENCER TO FLEX)	-
10	6	172-3959	1/2" SPRING NUT	-
11	6	5P-2566	1/2"-13x1-1/2" BOLT	-
12	8	MRFSSSPRING	SPRING (ELBOW & FLEX BLANKET)	-
13	4	317-5700	1/4" S.S. NEOPREME WASHER	-
14	4	91099A456	1/4"-20x1" CDUNTERSINK SCREW	-
15	3	198-2970	3/8"-16 FLANGED NUT	-



NOTE A: INSTALL PARTS (JCS-08X-90017542), (RMB-16X-90017323), (87C247), (00-SILENCER), (NW525ZN), (BT-8924), (317-5700), (91099A456), (198-2970) IN THE CONTAINER ARRANGEMENT (87A215).

NOTE B: INSTALL ITEMS (FLEX-06X-90017318), (00-FLEX), (00-ELBOW), (247-3393), (61-04-06), (MRFSSSPRING) IN THE PACKAGE ARRANGEMENT (87A200)

NOTE C: REPLACE EXISTING MOUNTING BAND S.S. NUT WITH REGULAR 3/8"-16 NUT (345-8531) TO KEEP MOUNTING BANDS FROM SEIZING

DATE		BY		PROJECT REFERENCE	
07/16/13	BML			AMP500 RENTAL PACKAGE	
THIS DOCUMENT CONTAINS PROPRIETARY INFORMATION OF ALTORFER, INC. WITHOUT THE WRITTEN PERMISSION OF ALTORFER, INC., ANY COPYING OR OTHER USE EXCEPT THAT FOR WHICH IT WAS INTENDED IS PROHIBITED.		FILE		DRAWN BY	
ALL DIMENSIONS IN INCHES UNLESS OTHERWISE SPECIFIED		DF/87C		BML	
TOLERANCES:	THIRD ANGLE PROJECTION	SCALE/SHEET SIZE	1=20/D	DATE	05/15/13
X.X ± 0.100				WORK ORDER NUMBER	-
X.XX ± 0.050				DRAWING NUMBER	87A217-1
X.XXX ± 0.005					
ANGULAR ± 1'					
TITLE: MOUNTING GROUP - EXHAUST (ENGINE)					

ALTORFER
 6315 W. FAUBER RD. PHONE (309) 697-1234
 BARTONVILLE, IL 61607 FAX (309) 282-7546