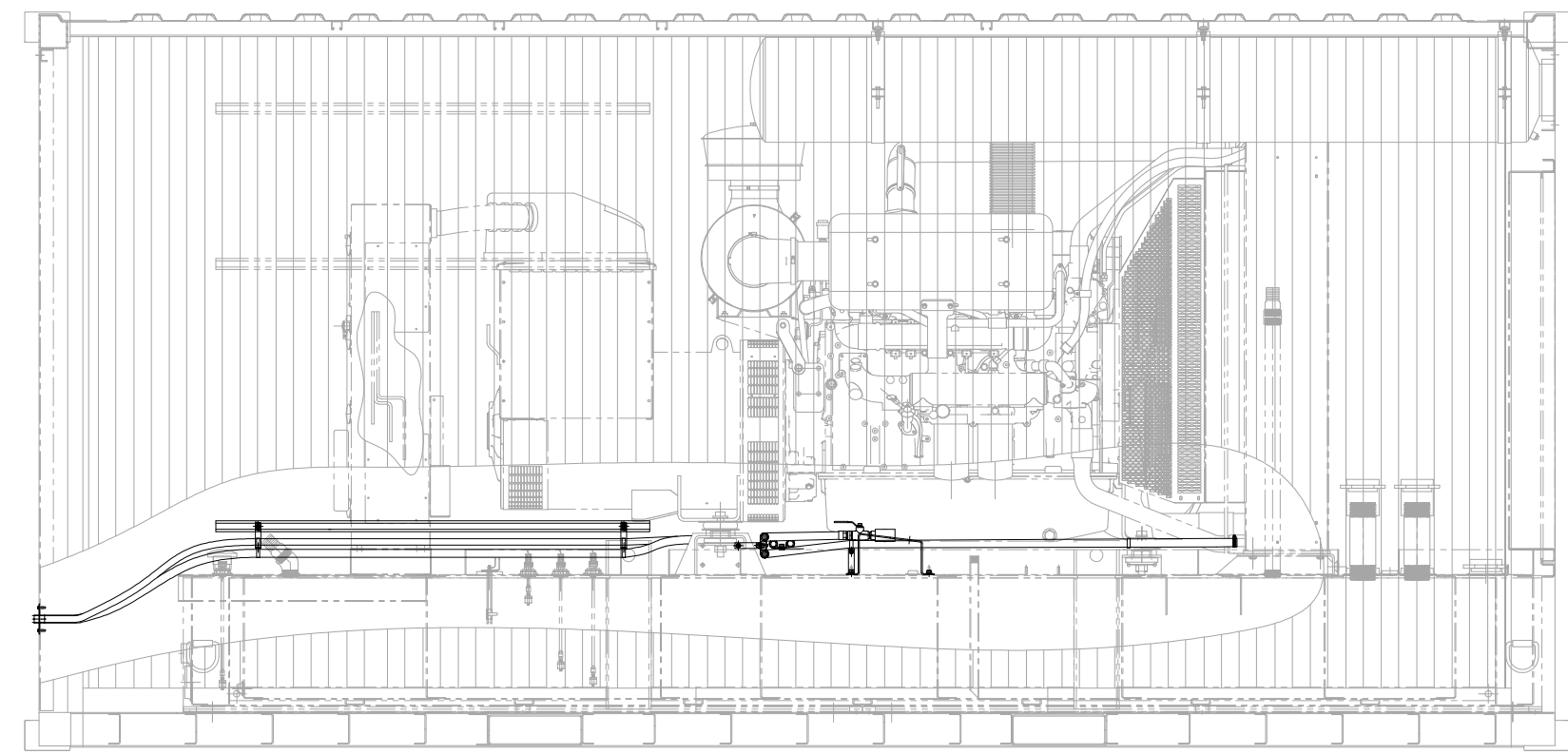
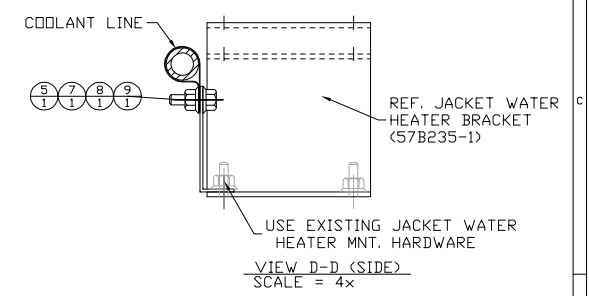
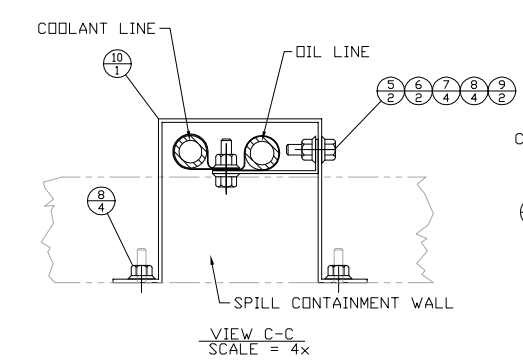
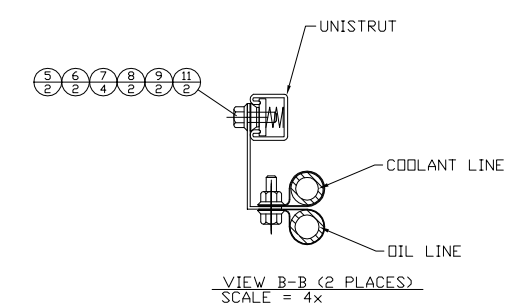
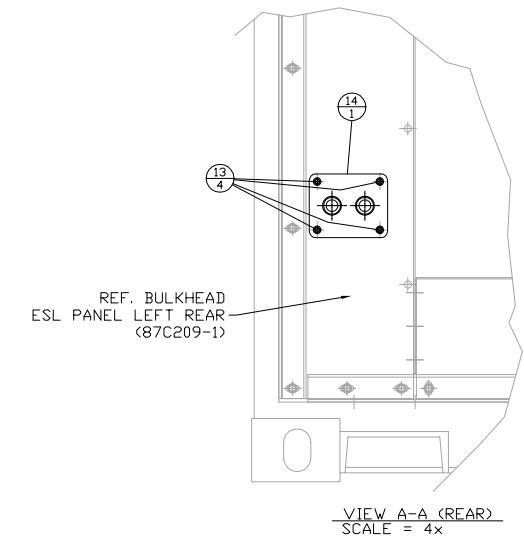
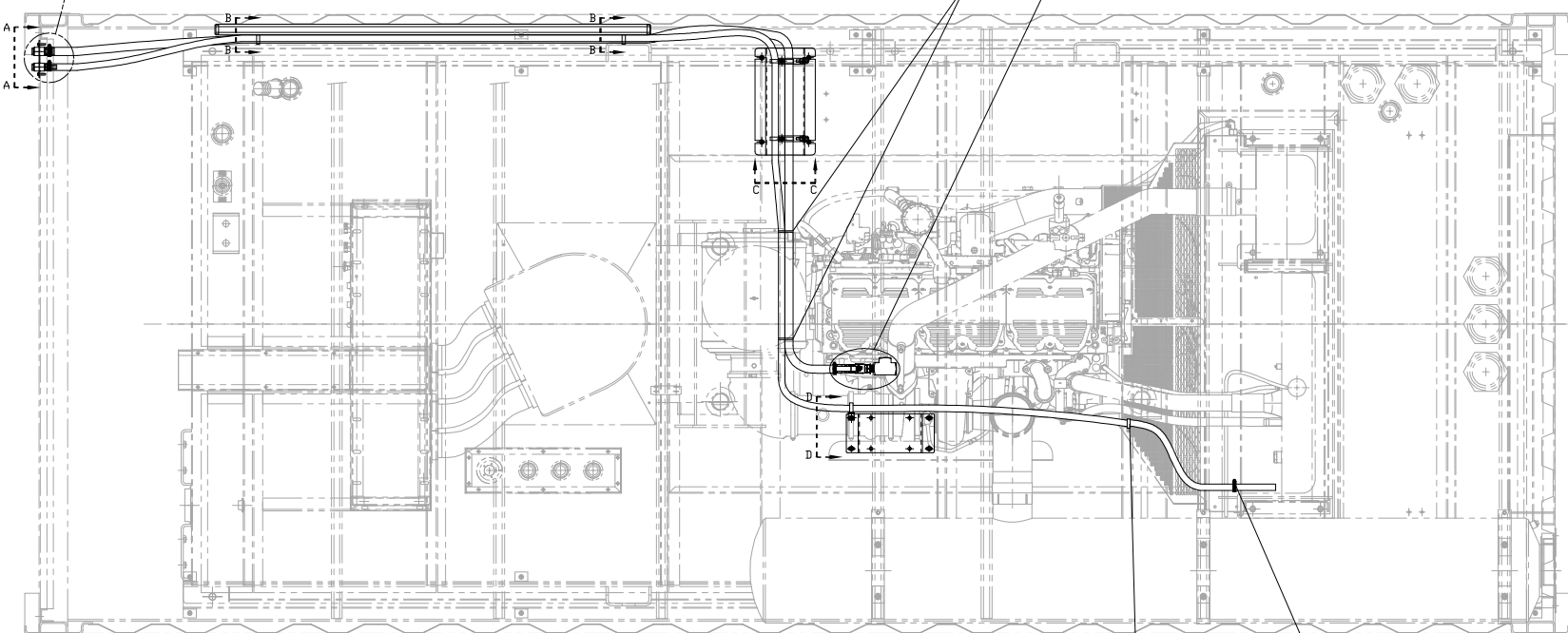


ITEM	QTY.	PART NO.	DESCRIPTION	WEIGHT
1	190'	5P-1251	HOSE 1" - (ENGINE)	XX
2	260'	103-2555	HOSE 3/4" - (RADIATOR)	XX
3	1	147-2442	BARBED FITTING 3/4" PIPE TO 5/8" HOSE (COOLANT)	XX
4	1	005-6814	BARBED FITTING 3/4" PIPE TO 1" HOSE (OIL)	XX
5	6	9N-1394	BRACKET	XX
6	4	0708814	1-1/2" P-CLAMP	XX
7	11	345-8531	3/8"-16x1" FLANGED BOLT	XX
8	9	198-2970	3/8"-16 FLANGED NUT	XX
9	6	070-8802	1-1/4" P-CLAMP	XX
10	1	87C243-1	RACEWAY DRAIN LINES	XX
11	2	NW528Z38	3/8" SPRING NUT	XX
12	2	1B-5174	3/4" HEX HEAD PLUG	XX
13	4	97646A115	1/4"-20x1" S.S. FLANGED BOLT	XX
14	1	87C202	DRAIN PLATE ASSEMBLY	XX
15	1	159-1503	HOSE CLAMP 1"	XX
16	1	50785K76	3/4" NPTF BRASS TEE	XX
17	2	66440	3/4" CLOSE NIPPLE	XX
18	2	3S-2093	STRAP-CABLE (PLASTIC)	XX



NOTE A: COMPLETE DRAINS CONNECTION IN PACKAGE ARRANGEMENT (87A200)

08/16/13	BAL	DATE	ALTORFER		ALTORFER POWER SYSTEMS	
07/16/13	BML	DATE BY	6315 W. FAUBER RD.		PHONE (309) 697-1234	
			BARTONVILLE, IL 61607		FAX (309) 282-7546	
UPDATED HARDWARE	UPDATED HARDWARE	CHANGE NOTICE	FILE	PROJECT REFERENCE	THIS DOCUMENT CONTAINS PROPRIETARY INFORMATION OF ALTORFER, INC. WITHOUT THE WRITTEN PERMISSION OF ALTORFER, INC., ANY COPYING OR OTHER USE EXCEPT THAT FOR WHICH IT WAS INTENDED IS PROHIBITED.	
1	1	NO.	DF/87A	AMP500 RENTAL PACKAGE	UNLESS OTHERWISE SPECIFIED	
			SCALE/SHEET SIZE	DRAWN BY	ALL DIMENSIONS IN INCHES	
			1=20/C	BML	TOLERANCES:	
					.XX ± 0.100	
					.XXX ± 0.060	
					.XXX ± 0.005	
					ANGULAR ± 1°	
					THIRD ANGLE PROJECTION	
					SHEET	
					1 OF 1	
					DATE	
					05/22/13	
					WORK ORDER NUMBER	
					-	
					DRAWING NUMBER	
					87A206-2	
					TITLE	
					LINES GROUP - DRAIN (ENGINE)	