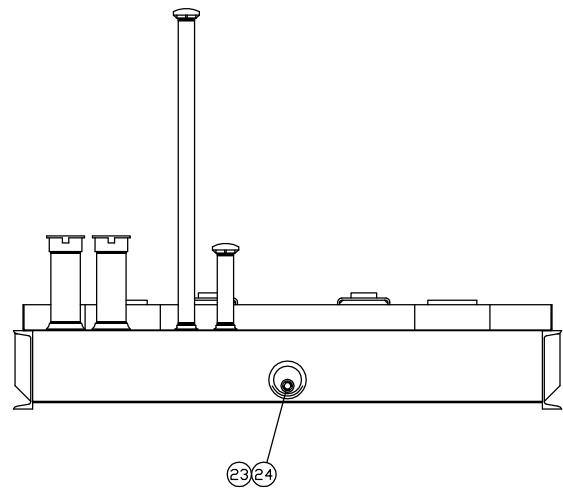
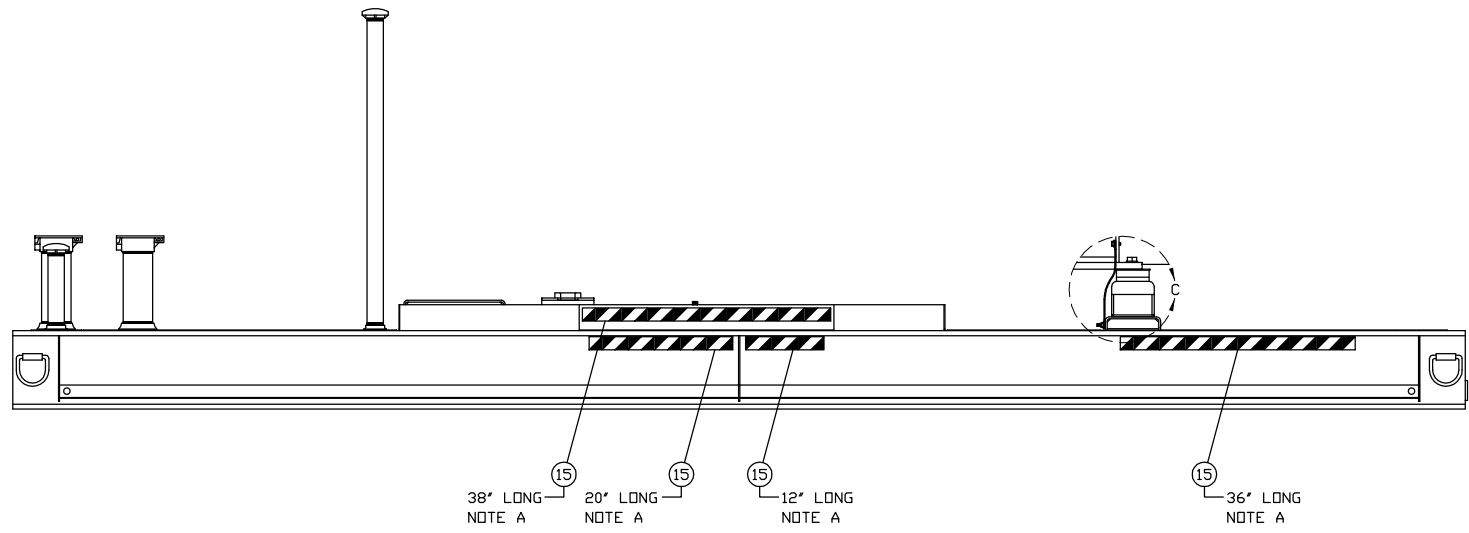


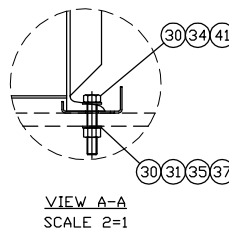
ITEM	QTY.	DESCRIPTION	WEIGHT
1	1	85B100 - APS 550 BASE ASSEMBLY	4,048
2	1	52E103 - HIGH FUEL LEVEL SWITCH	1
3	1	57E129 - RUPTURE BASIN SWITCH	2
4	1	57E128 - LOW FUEL LEVEL SWITCH	1
5	2	57B127 - BASE MOUNT - 5/16 HRS	6
6	1	57B132 - DRAIN MOUNT BASE	2
7	1	57B133 - DRAIN BRACKET	1
8			
9			
10			
11	1	034-3665 - STRAP	1
12			
13			
14			
15	176'	1F012 - REFLECTIVE TAPE	-
16	204'	3ZG32 - REFLECTIVE SKID TAPE	-
17	1	PPC2 - 2" NPT CAP	1
18	1	F8680L10 - 10' SIGHT LEVEL GAUGE	1
19	1	PNPL248 - 2' NPT x 48 NIPPLE	15
20	1	PNPL212 - 2' NPT x 12 NIPPLE	4
21	4	PNPL412 - 4' NPT x 12 NIPPLE	43
22	4	202-0640 - 4' EMERGENCY VENT	-
23	1	PPP34 - 3/4' PLUG	-
24	1	PPP4 - 4' PLUG	2
25	2	FTV02 - 2' VENT	1
26	2	PPC34 - 3/4' PIPE CAP	-
27	2	PNPL346 - 3/4' x 6' NIPPLE	1
28	1	PP34C - 3/4' COUPLING	-
29			
30	8	519 - WASHER 3/4	-
31	4	80934 - NUT 3/4-10	-
32	3	503 - WASHER 3/8	-
33	3	95679 - NUT 3/8-16	-
34	4	65123 - BOLT 3/4-16 x 4	-
35	4	535 - LOCKWASHER 3/4	-
36			
37	4	510 - WASHER 1"	-
38	4	65062 - BOLT 1/2-13 x 1-1/2	-
39	4	505 - WASHER 1/2	-
40	4	532 - LOCKWASHER 1/2	-
41	2	98673 - BEVELED WASHER 3/4	-
42			
43			
44	16	65097 - BOLT 5/8-11 X 1-3/4	-
45	32	507 - WASHER 5/8	-
46	16	534 - LOCKWASHER 5/8	-
47	16	106 - NUT 5/8-11	-



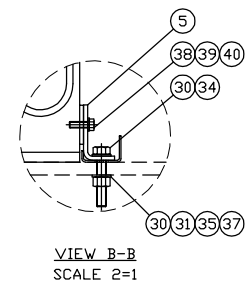
23 24



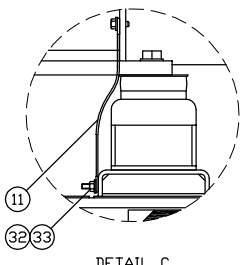
38" LONG NOTE A
20" LONG NOTE A
12" LONG NOTE A
36" LONG NOTE A



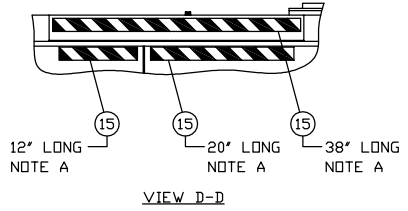
VIEW A-A
SCALE 2=1



VIEW B-B
SCALE 2=1



DETAIL C
SCALE 2=1



VIEW D-D

NOTE A: ITEMS 15 & 16 TO BE INSTALLED AFTER BASE MOUNTING GROUP IS SLID INTO CONTAINER

5-14-10 DATE	DATE BY	ALTORFER		ALTORFER POWER SYSTEMS	
		6315 W. FAUBER RD. BARTONVILLE, IL 61807		PHONE (309) 697-1234 FAX (309) 282-7546	
CHANGE NOTICE NO.	CHANGE NOTICE	THIS DOCUMENT CONTAINS PROPRIETARY INFORMATION OF ALTORFER, INC. WITHOUT THE WRITTEN PERMISSION OF ALTORFER, INC., ANY COPYING OR OTHER USE EXCEPT THAT FOR WHICH IT WAS INTENDED IS PROHIBITED UNLESS OTHERWISE SPECIFIED.		FILE	PROJECT REFERENCE
	ALL DIMENSIONS IN INCHES UNLESS OTHERWISE SPECIFIED	THIRD ANGLE PROJECTION	SCALE/SHEET SIZE	DRAWN BY	QUOTE NUMBER
	TOLERANCES: XX ± 0.100 X.XX ± 0.060 X.XXX ± 0.005	ANGULAR ± 1°	1=15/D	J. DLTMAN	0
	ANGULAR ± 1°	1 OF 1	DATE	3-18-08	WORK ORDER NUMBER
2	1	TITLE			DRAWING NUMBER
APS 550 BASE MOUNTING GROUP					85A103-1