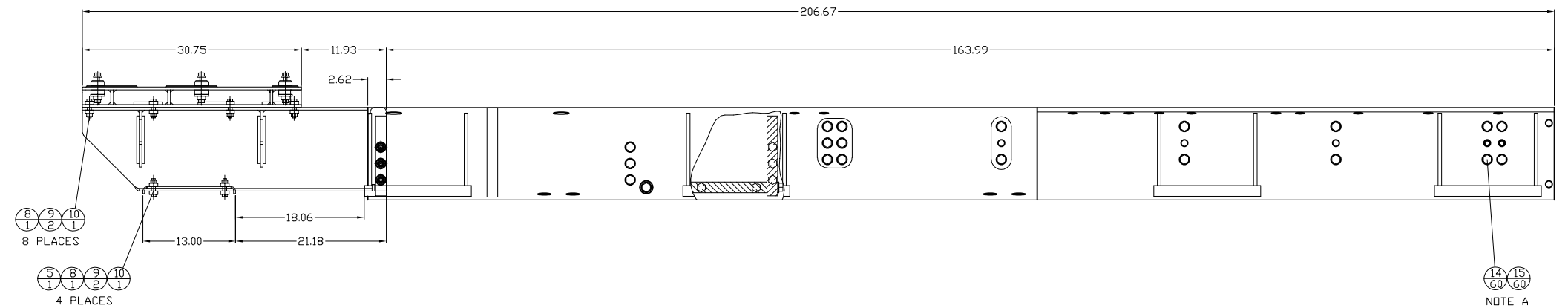
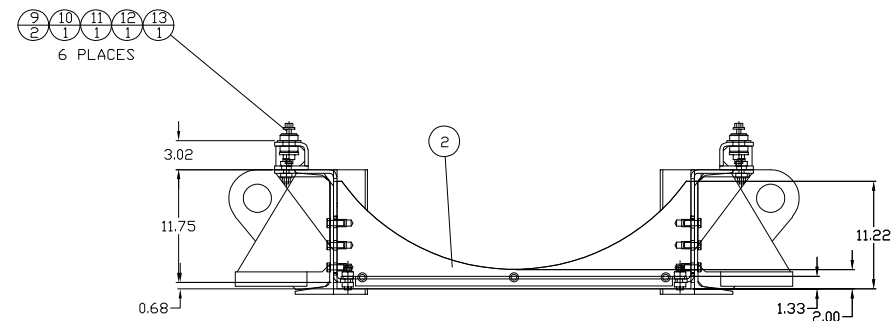
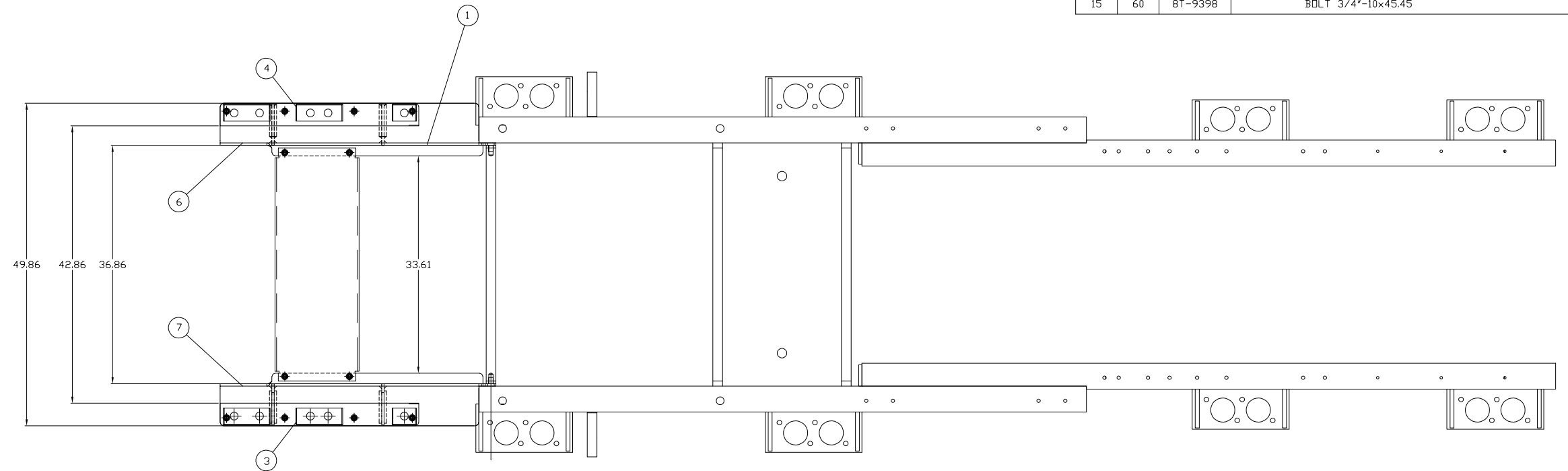


ITEM	QTY.	PART No.	DESCRIPTION
1	1	83B100	SLIDER PARTS GROUP
2	1	83B101	BRACE - ENGINE SUPPORT
3	1	83B102	LEFT SIDE RAIL (WELDMENT)
4	1	83B116	RIGHT SIDE RAIL (WELDMENT)
5	1	83B118	BOTTOM GUSSET
6	1	83B127	LEFT SIDE RAIL ASSEMBLY
7	1	83B128	RIGHT SIDE RAIL ASSEMBLY
8	12	8T-4183	BOLT M12x1.75-40MM
9	36	5P-1076	WASHER
10	18	8T-4244	NUT
11	6	249-3108	MOUNT
12	6	086-0297	WASHER
13	6	8T-4176	BOLT M12x1.75-90MM
14	60	8T-4994	WASHER-HARD
15	60	8T-9398	BOLT 3/4"-10x45.45



NOTE A: ITEMS 8T-4994 & 8T-9398 USED FOR MOUNTING ENGINE TO RAIL GROUP - ENGINE SUPPORT 190-9766

		ALTORFER POWER SYSTEMS 6315 W. FAUBER RD. PHONE (309) 697-1234 BARTONVILLE, IL 61607 FAX (309) 282-7546		
		THIS DOCUMENT CONTAINS PROPRIETARY INFORMATION OF ALTORFER, INC. WITHOUT THE WRITTEN PERMISSION OF ALTORFER, INC., ANY COPYING OR OTHER USE EXCEPT THAT FOR WHICH IT WAS INTENDED IS PROHIBITED.		
CHANGE NOTICE NO. 1	ALL DIMENSIONS IN INCHES UNLESS OTHERWISE SPECIFIED	FILE DF/83A	PROJECT REFERENCE 3516B REMAN RENTAL PACKAGE	
	TOLERANCES: .XX ± 0.100 .XXX ± 0.060 .XXXX ± 0.005	THIRD ANGLE PROJECTION	SCALE/SHEET SIZE 1=10/D	DRAWN BY BML
	ANGULAR ± 1°		SHEET 1 OF 1	DATE 07/25/18
	TITLE MOUNTING GROUP - BASE RAIL EXTENSION (DUAL BEARING)	ENGINEERING STATUS PRD 0 PET 0 PRD 0	DRAWING NUMBER 83A237	DATE 07/25/18