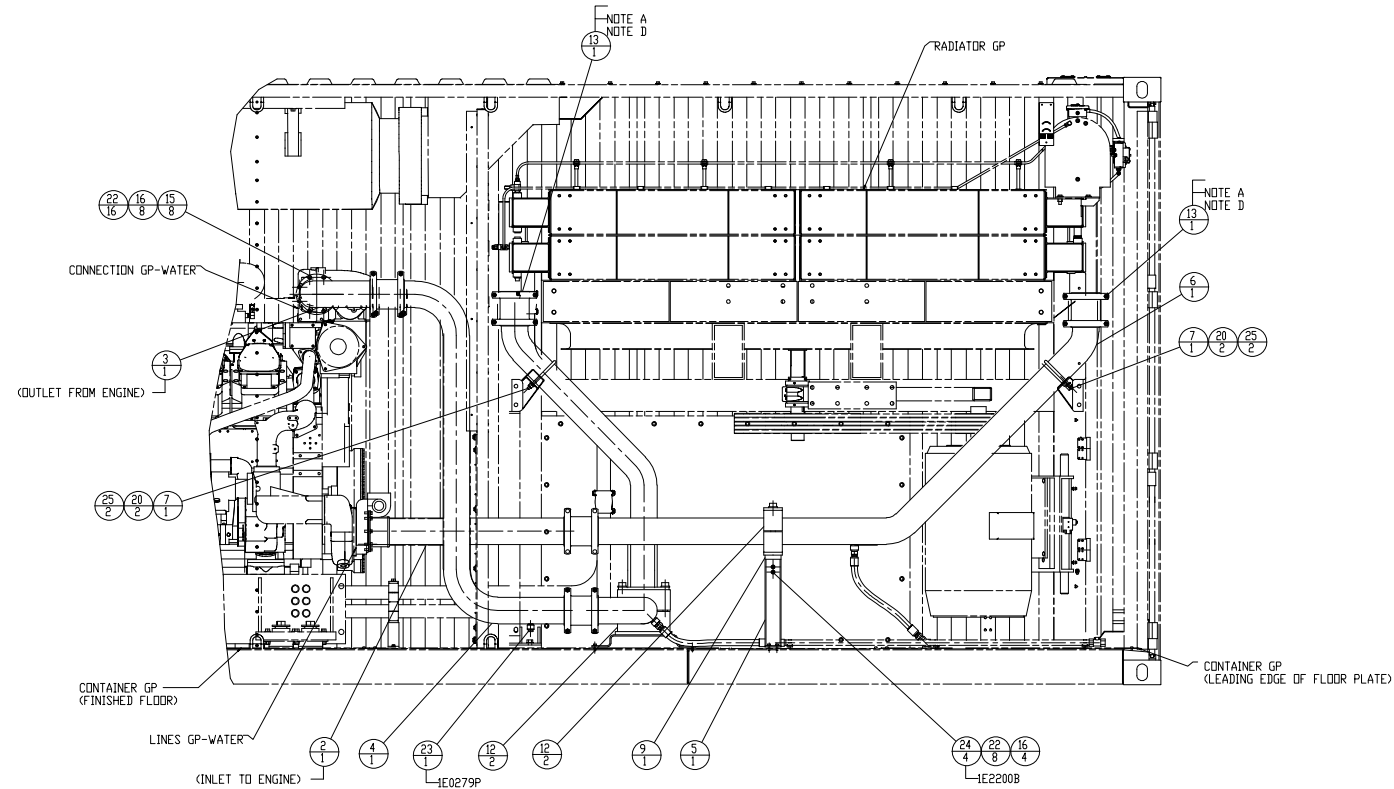
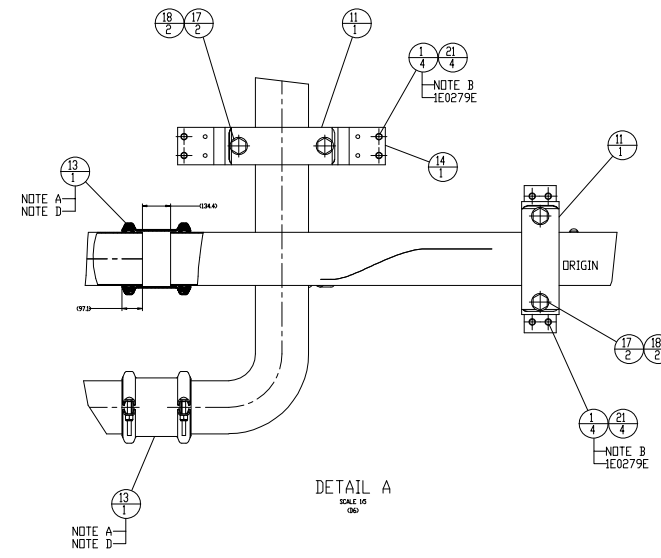


TOP VIEW
CONTAINER REEF SELECTOR AND INDICATOR
REMOVED FOR CLARITY



ROAD SIDE VIEW
ROAD SIDE WALL REMOVED FOR CLARITY



DETAIL A
SCALE 10/1

PARTS LIST			
1	16	93882A585	5/16" SELF TAPPING SCREW
2	1	183-4885	TUBE AS
3	1	189-2326	TUBE AS
4	1	189-2327	TUBE AS
5	1	199-8934	SUPPORT AS
6	1	199-8939	TUBE AS
7	2	3043T2	U-BOLT
8	2	1S-5772	GASKET
9	1	200-5006	SUPPORT AS
10	1	202-8128	TUBE AS
11	2	213-2326	PLATE
12	4	213-2328	CLAMP
13	5	216-2783	JOINT ASSEMBLY
14	1	251-2194	SUPPORT AS
15	8	4L-9337	BOLT 3/8-16
16	12	6V-8801	NUT 3/8-16
17	4	7X-0396	BOLT 7/8-9
18	4	8C-6913	WASHER-HARD
19	8	8T-2502	BOLT 3/8-16
20	4	8T-4223	WASHER-HARD
21	8	8T-4224	WASHER-HARD
22	32	8T-4896	WASHER-HARD
23	1	8T-6762	PLUG-PIPE 1/2"NPT
24	4	9B-7237	BOLT 3/8-16
25	4	9X-0941	LOCKNUT 1/2-13

FINISH	
MATL	
NOTE	1E0507 IDENT
	1E0011 INTPR & TOL
	MANUFACTURING SPECIFICATIONS

- NOTE A: LUBRICATE BORE LIGHTLY WITH GLYCERIN OR APPROVED EQUIVALENT
- NOTE B: DRILL Ø6.8-B IN FINISHED FLOOR PRIOR TO INSTALLATION
- NOTE C: APPLY TO ALL PIPE THREAD CONNECTIONS
- NOTE D: STANDARD INSERTION DEPTH IS 48.6±4.1
- NOTE F: SPECIFIED AT CALLOUT

12/04/18 BML DATE	ALTORFER	ALTORFER POWER SYSTEMS	
		6315 W. FAUBER RD. BARTONVILLE, IL 61607	PHONE (309) 697-1234 FAX (309) 282-7546
UPDATED HARDWARE ITEM #1 & 23	CHANGE NOTICE	FILE DF/83E	PROJECT REFERENCE 3516B REMAN RENTAL UNIT
TOLERANCES: XX ± 0.100 XXX ± 0.060 XXX ± 0.005	THIRD ANGLE PROJECTION	SCALE/SHEET SIZE 1=5/C	DRAWN BY D. ROLING
ANGULAR ± 1°		SHEET 1 OF 1	DATE 05/18/2018
TITLE LINES GROUP-WATER 6"			ENGINEERING STATUS PROTO PET PRD 0 0 X
			DRAWING NUMBER 83A230-01