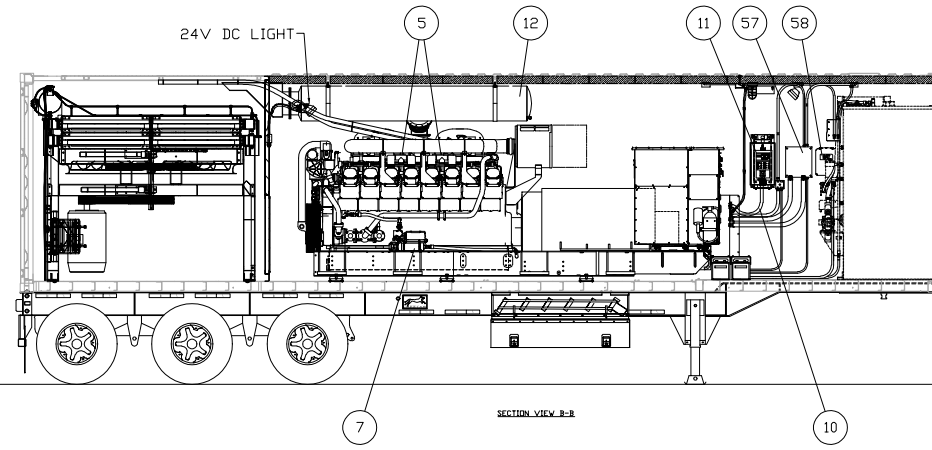
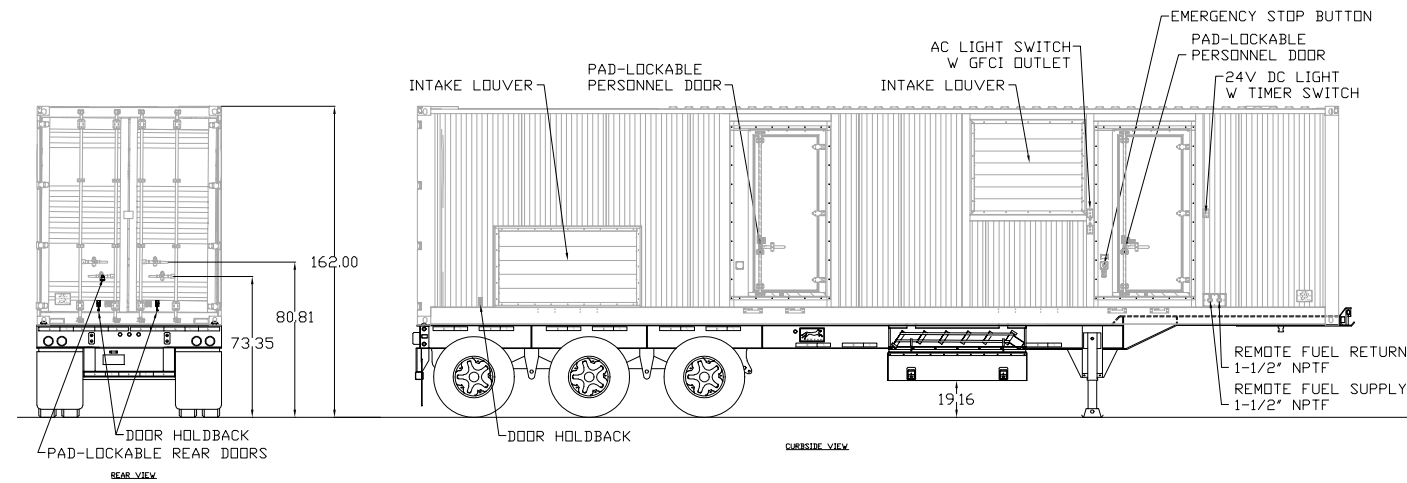
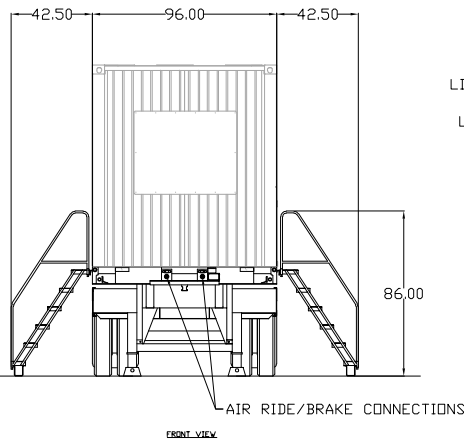
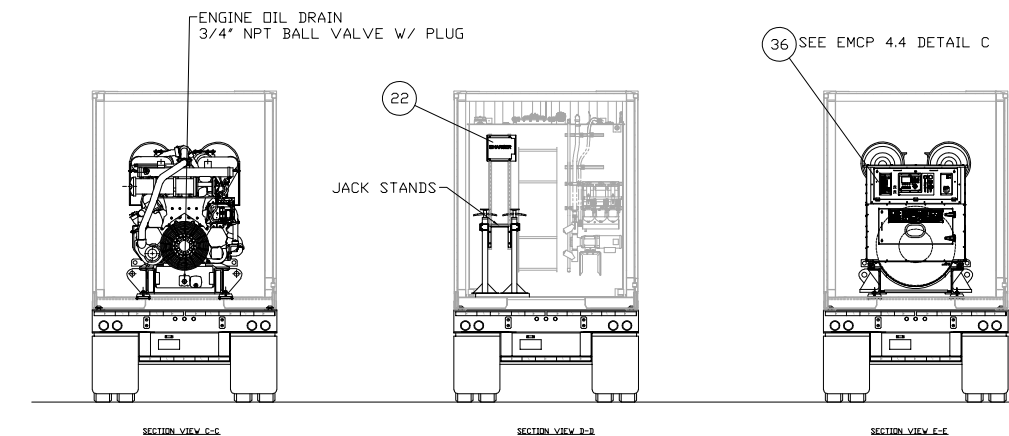


| ITEM | QTY. | DESCRIPTION |
|------|------|--------------------------------------------------------|
| 1 | 1 | CATERPILLAR 3516B DIESEL ENGINE |
| 2 | 1 | GENERATOR ASSEMBLY 480V |
| 3 | 1 | RADIATOR HC051 STCKD-39 US GALLON |
| 4 | 2 | RADIATOR COOLANT FILL CAP |
| 5 | 2 | CLOSED CRANKCASE VENTILLATION ASSEMBLY |
| 6 | 4 | 24V MAINTENANCE FREE BATTERY GROUP |
| 7 | 1 | JACKET WATER HEATER GROUP 240V AC |
| 8 | 1 | QUICKFIT (OIL DRAIN) |
| 9 | 1 | FUEL LINES GROUP |
| 10 | 1 | PARALLELING HARNESS |
| 11 | 1 | (UMR) UTILITY MASTER RELAY GROUP |
| 12 | 1 | EXHAUST GROUP |
| 13 | 1 | PANEL GROUP |
| 14 | 1 | 1,250 GALLON DBL. WALL FUEL TANK (UL,CUL&TC CERTIFIED) |
| 15 | 1 | FUEL SUPPLY PIPE - 1-1/2" W/EXTERNAL GATE VALVE |
| 16 | 1 | HIGH LEVEL FUEL SWITCH |
| 17 | 1 | FUEL LEVEL SENDER PORT - 2" NPT |
| 18 | 1 | MANUAL FUEL FILL - 4" NPT |
| 19 | 1 | FUEL RETURN PIPE - 3/4" |
| 20 | 1 | TRIPLE RACOR FUEL FILTER |
| 21 | 1 | PERSONNEL STEPS |
| 22 | 1 | 30 AMP 120 VOLT BATTERY CHARGER GROUP |
| 23 | 1 | RUPTURE BASIN DRAIN (NO INTERNAL VALVE) - 1" NPT |
| 24 | 1 | PORT RESERVED FOR SPARE FUEL HEATER - 2" NPT |
| 25 | 1 | MAIN FUEL TANK VENT - 5" NPT |
| 26 | 1 | SECONDARY CONTAINMENT EMERGENCY VENT - 5" NPT |
| 27 | 1 | SMART VENT W/ GASKET |
| 28 | 1 | CIRCUIT BREAKER RELAY |
| 29 | 1 | SURGE SUPPRESSOR TERMINAL BLOCK |
| 30 | 1 | SHORE POWER RELAYS |
| 31 | 1 | SHORE POWER CIRCUIT BREAKERS |
| 32 | 1 | AC SENSING FUSE BLOCK |
| 33 | 1 | ALARM PANEL ANNUNCIATOR |
| 34 | 1 | SERVICE CONNECTOR - CAN-2 |
| 35 | 1 | SERVICE CONNECTOR - CAN-1 |
| 36 | 1 | EMCP 4.4 CONTROL PANEL |
| 37 | 1 | EMERGENCY STOP SWITCH - CONTROL PANEL |
| 38 | 1 | FUEL PRIMING PUMP SWITCH |
| 39 | 1 | FUEL LEVEL GAUGE |
| 40 | 1 | FUEL CONTROL SWITCH |
| 41 | 1 | FUEL MODE SWITCH |
| 42 | 1 | FUEL OVERFILL LIGHT |
| 43 | 1 | LOW VOLTAGE LEVEL |
| 44 | 1 | HIGH VOLTAGE LEVEL |
| 45 | 1 | LEGACY MODE LED |
| 46 | 1 | PRIMARY UNIT LED |
| 47 | 1 | BREAKER CONTROL SWITCH |
| 48 | 1 | GENERATOR RELAY GROUP |
| 49 | 1 | MAIN GENERATOR CIRCUIT BREAKER - 3000 AMP / 480V |
| 50 | 1 | ALARM AND LOAD SHARE INTERCONNECT PANEL |
| 51 | 1 | SHORE POWER CONNECTION BLOCK |
| 52 | 1 | CIRCUIT TERMINAL SHORTING BLOCK |
| 53 | 1 | LOAD DOOR SAFETY TRIP SWITCH |
| 54 | 1 | LOAD DOOR ELEC. OPERATED MAG LOCK |
| 55 | 1 | PARALLEL CONNECTION PORT 'B' |
| 56 | 1 | PARALLEL CONNECTION PORT 'A' |
| 57 | 1 | SHORE POWER BREAKER BOX |
| 58 | 1 | DOCUMENT BOX |

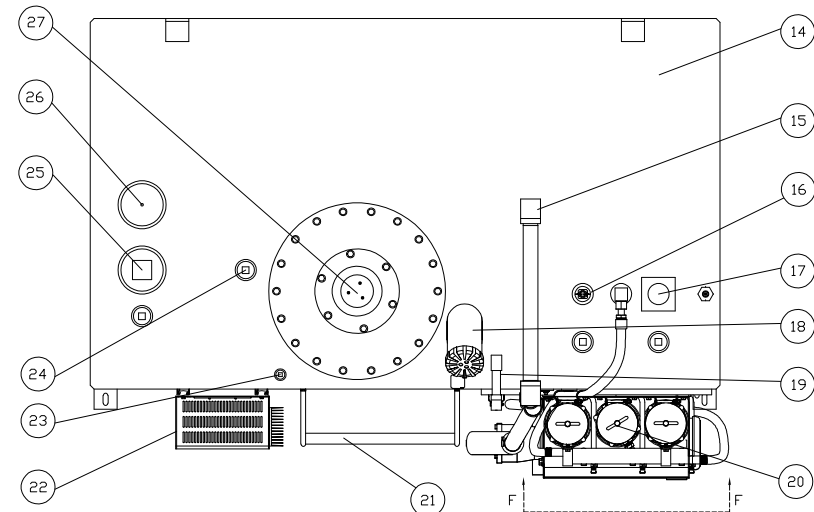


3516B PACKAGE WEIGHTS.
 PACKAGE ARRANGEMENT WITHOUT CHASSIS & NO FUEL = 65,500 LBS.
 PACKAGE ARRANGEMENT WITHOUT CHASSIS & 200 US GAL. FUEL = 67,000 LBS.
 PACKAGE ARRANGEMENT WITHOUT CHASSIS & FULL FUEL = 75,000 LBS.
 PACKAGE ARRANGEMENT W/CHASSIS NO FUEL = 75,000 LBS.
 PACKAGE ARRANGEMENT W/CHASSIS & 200 US GAL. FUEL = 76,500 LBS.
 PACKAGE ARRANGEMENT W/CHASSIS FULL FUEL = 84,500 LBS.

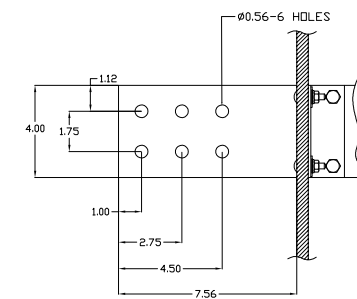
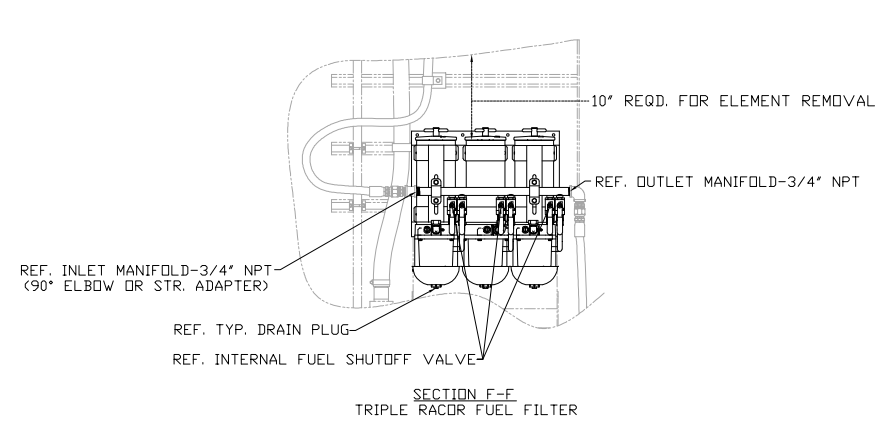


DETAIL B
 LINES GROUP-WATER JACKET WATER (ENGINE INLET) DRAIN - 3/4" NPT BALL VALVE W/ PLUG
 LINES GROUP-WATER JACKET WATER (ENGINE OUTLET) DRAIN - 3/4" NPT BALL VALVE W/ PLUG
 LINES GROUP-WATER AFTERCOOLER (ENGINE OUTLET) DRAIN - 3/4" NPT BALL VALVE W/ PLUG

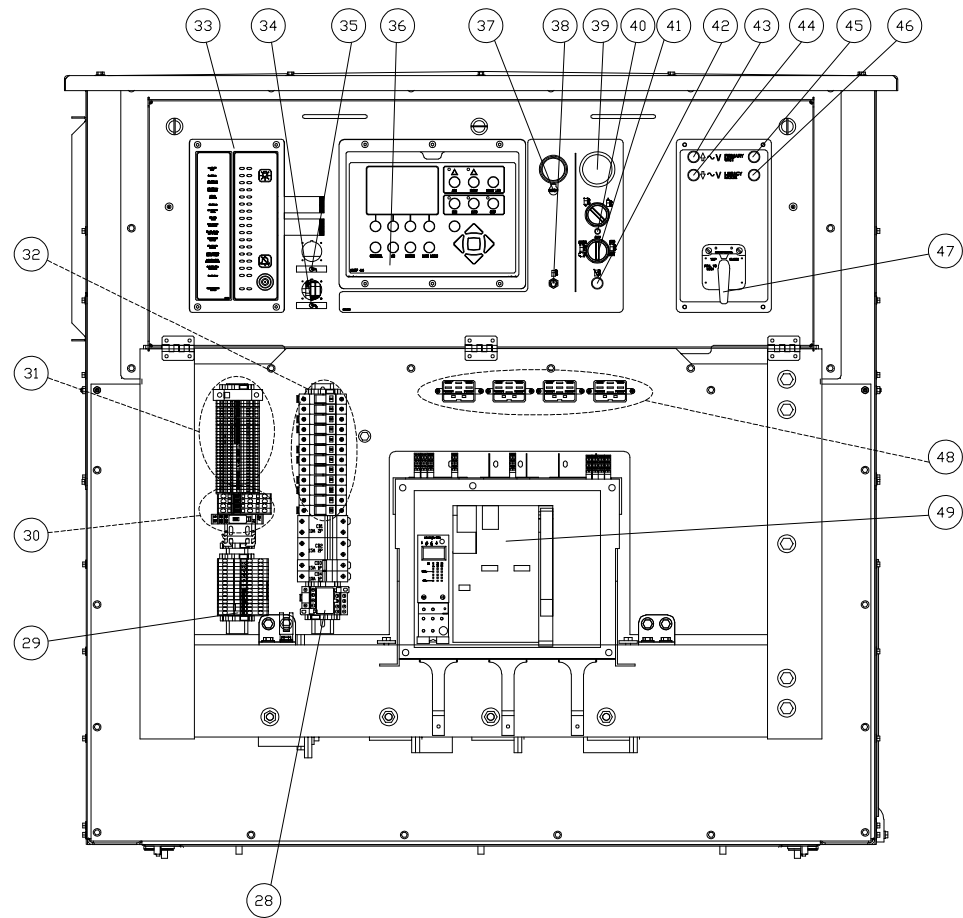
| | | | | | |
|-------------------------------|-----------------------------------------------------|------------------------------------------|------------------|-----------------------------------------|-----------------------------|
| DATE BY | | ALTORFER | | ALTORFER POWER SYSTEMS | |
| | | 6315 W. FAUBER RD. BARTONVILLE, IL 61607 | | PHONE (309) 697-1234 FAX (309) 282-7546 | |
| CHANGE NOTICE | ALL DIMENSIONS IN INCHES UNLESS OTHERWISE SPECIFIED | FILE | DF/83A | PROJECT REFERENCE | 33516B-REMAN RENTAL PACKAGE |
| | TOLERANCES: X.X ± 0.100 X.XX ± 0.050 X.XXX ± 0.005 | THIRD ANGLE PROJECTION | SCALE/SHEET SIZE | DRAWN BY | BML |
| | ANGULAR ± 1° | | SHEET | DATE | 03/08/18 |
| | TITLE | 1 OF 2 | | WORK ORDER NUMBER | |
| DRAWING NUMBER | | | | 83A229A | |
| 3516B-REMAN GENERAL DIMENSION | | | | | |



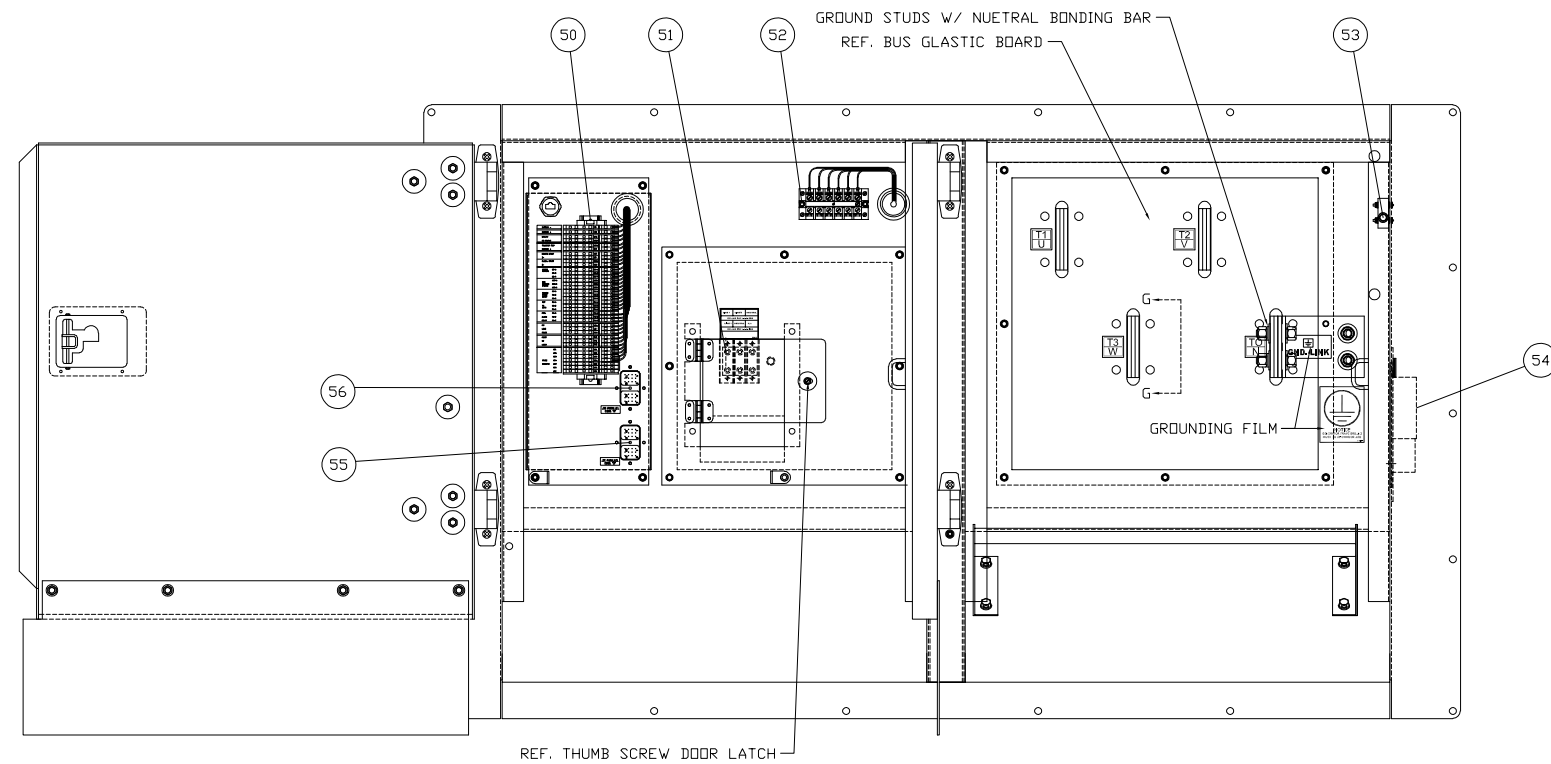
FUEL TANK TOP VIEW - FITTINGS DETAIL A



SECTION G-G
TYP. 4 PLACES



ELECTRICAL MASTER CONTROL PANEL 4.4 DETAIL C
(DOOR REMOVED)



LOAD PAN DETAIL B
DOORS OPEN

| | | | | | | |
|---------------|--|-------------------------------------------------------------|----------|--------------------------------------------|----------------------------|--------------|
| DATE BY | | ALTORFER | | ALTORFER POWER SYSTEMS | | |
| | | 6315 W. FAUBER RD. BARTONVILLE, IL 61607 | | PHONE (309) 697-1234 FAX (309) 282-7546 | | |
| CHANGE NOTICE | | ALL DIMENSIONS IN INCHES UNLESS OTHERWISE SPECIFIED | | FILE | PROJECT REFERENCE | |
| | | TOLERANCES: X.X ± 0.100 X.XX ± 0.050 X.XXX ± 0.005 | | DF/88A | 3516B-REMAN RENTAL PACKAGE | |
| | | THIRD ANGLE PROJECTION | | SCALE/SHEET SIZE | DRAWN BY | QUOTE NUMBER |
| | | ANGULAR ± 1' | | 1=50/D | BML | - |
| SHEET | | 2 OF 2 | DATE | WORK ORDER NUMBER | | |
| TITLE | | | 03/08/18 | - | | |
| | | 3516B-REMAN GENERAL DIMENSION | | | DRAWING NUMBER | |
| | | | | | 83A229B | |