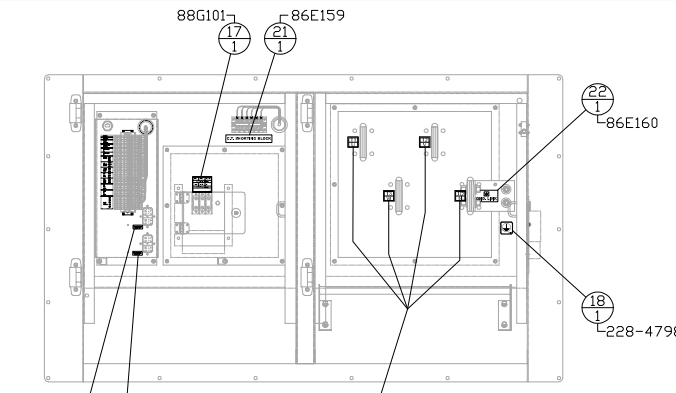


88G104
INSIDE OF LOAD DOORS

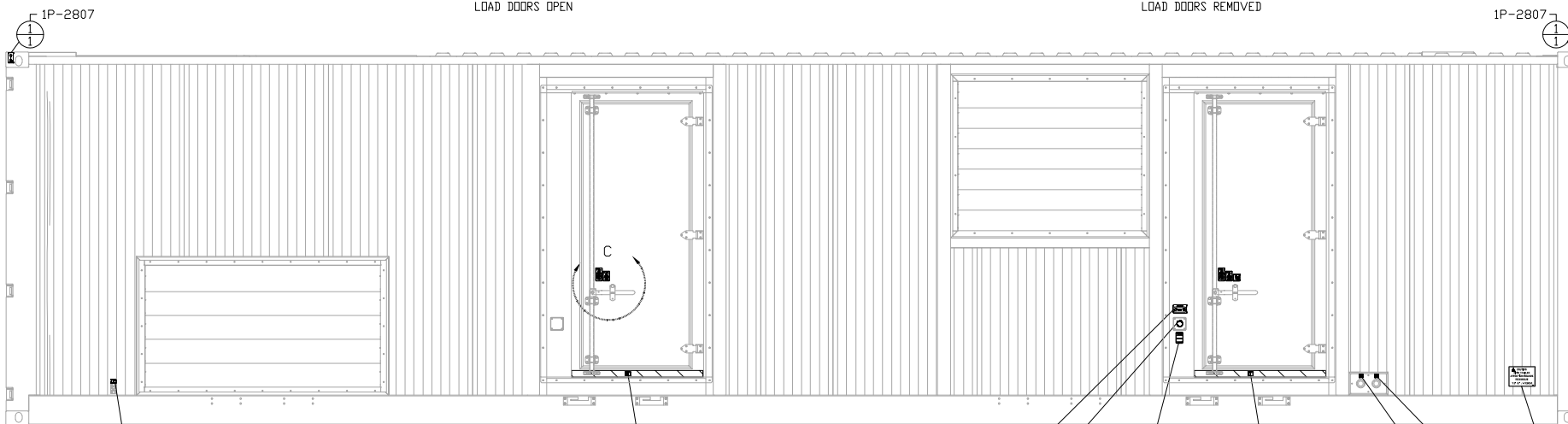
83G100
DETAIL A
LOAD DOORS OPEN



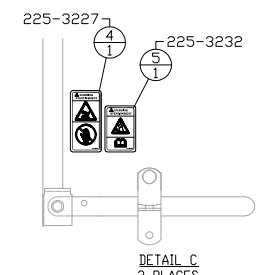
86E157 86E158 88G101 86E159 9Y-4275

DETAIL B
LOAD DOORS REMOVED

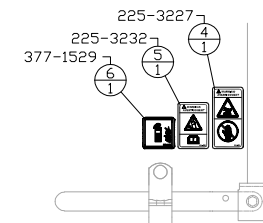
ITEM	QTY.	P/N	DESCRIPTION
1	8	1P-2807	FILM - SYMBOL - LIFT POINT
2	1	229-5047	FILM - DANGER (SHOCK/ELEC. HAZARD)
3	5	159-2444	FILM - INFO (DOOR LATCH)
4	5	225-3227	FILM-WARNING (HOT SURFACE)
5	3	225-3232	FILM - WARNING
6	2	377-1529	FILM - IDENT. - FIRE EXTINGUISHER
7	2	225-3224	FILM - WARNING
8	2	351-4742	FILM-EMERGENCY STOP (IDENT)
9	1	377-1471	FILM - FUEL FILL
10	1	377-6229	FILM - FUEL TANK OVERFLOW (RETURN)
11	3	108-3208	FILM - CAUTION (HIGH TRAILER)
12	2	366-7409	FILM - SPILL CONTAINMENT DRAIN
13	120'	3ZG32	TAPE-REFLECTIVE SKID
14	120'	1F012	TAPE-REFLECTIVE SMOOTH
15	1	380-6868	FILM - EMCP CONTROLS (INST)
16	1	9Y-4275	FILM - TERMINAL STRIP
17	1	88G101	FILM - INFO
18	1	228-4798	FILM - SYMBOL
19	1	86E157	FILM - LOAD PAN J30 PARALLEL CONNECTION
20	1	86E158	FILM - LOAD PAN J31 PARALLEL CONNECTION
21	1	86E159	FILM - LOAD PAN C.T. SHORTING BLOCK
22	1	86E160	LOAD PAN GROUND LINK
23	2	83G100	GENERATOR OUTPUT
24	1	47G215	FILM - NOTICE (BREAKER TRIP)
25	1	47G219	FILM - WARNING (AUTO START)
26	1	88G104	FILM - PARALLELING INTERCONNECT DIAGRAM
27	2	92G100	FILM - ALTORFER QR



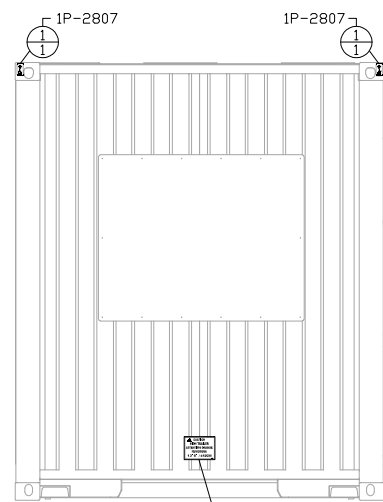
CURB SIDE VIEW



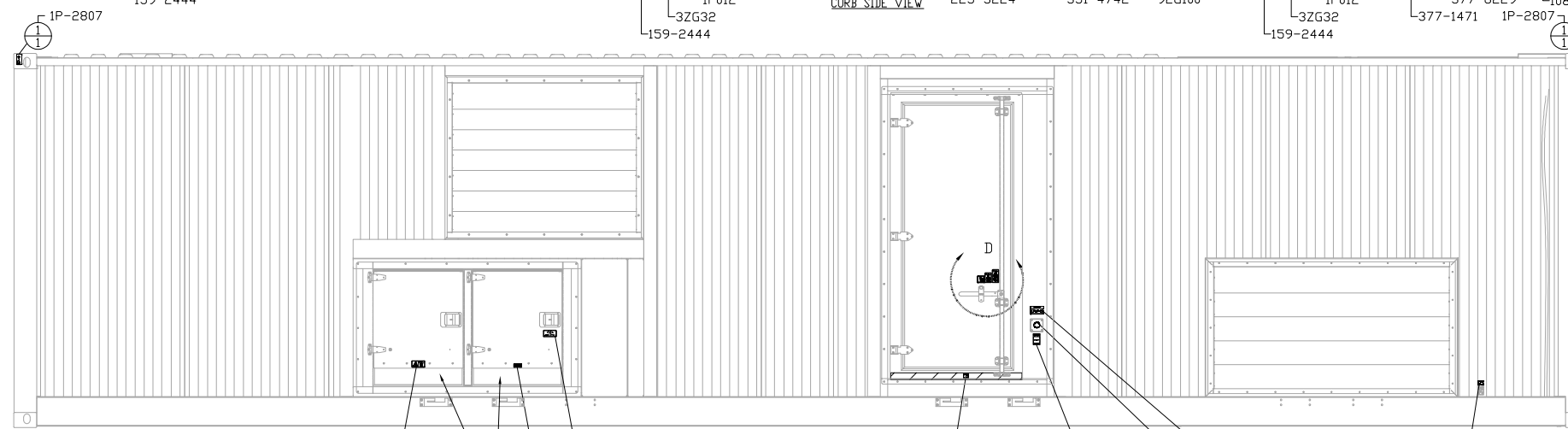
DETAIL C
2 PLACES



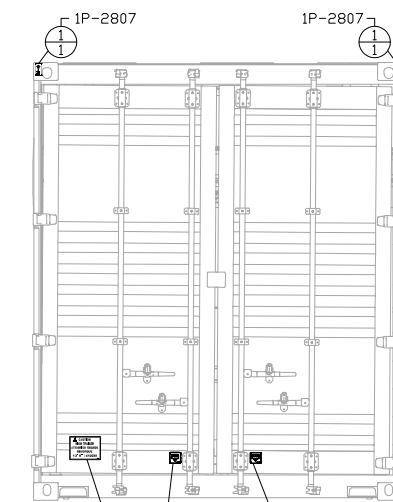
DETAIL D
2 PLACES



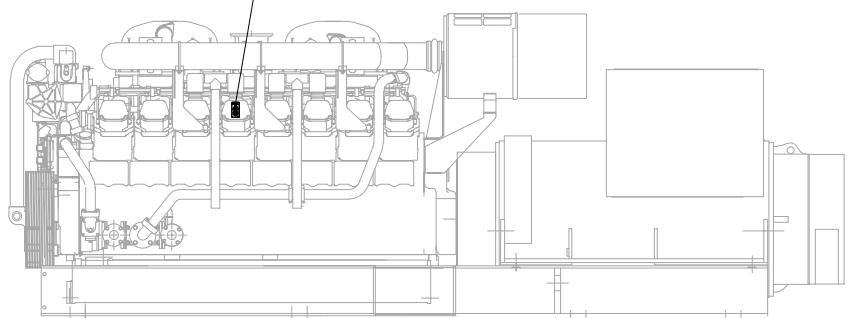
FRONT VIEW



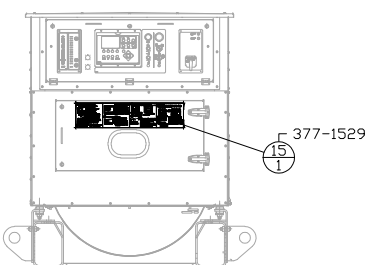
STREET SIDE VIEW



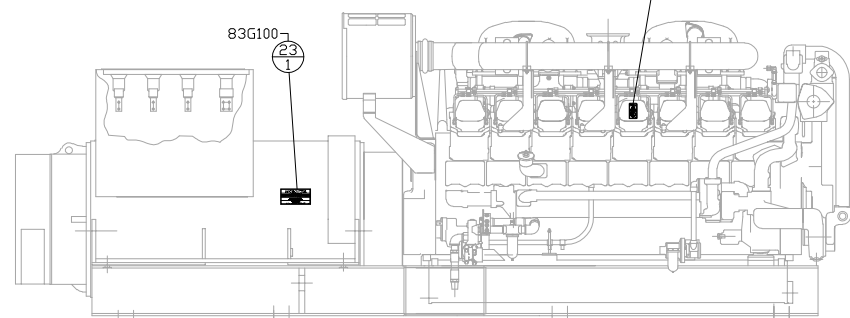
REAR VIEW



CURB SIDE VIEW
POWER PACK



FRONT VIEW
POWER PACK



STREET SIDE VIEW
POWER PACK

NOTE A: SURFACE MUST BE CLEANED BEFORE APPLYING FILMS

NOTE B: ALL SAFETY FILMS RECEIVED IN 83A218BM

<p>DATE: 01/23/19 DRAWN BY: [Signature] CHECKED BY: [Signature]</p>		<p>ALTORFER 6315 W. FAUBER RD. BARTONVILLE, IL 61607 PHONE (309) 697-1234 FAX (309) 282-7546</p>	
<p>THIS DOCUMENT CONTAINS PROPRIETARY INFORMATION OF ALTORFER, INC. WITHOUT THE WRITTEN PERMISSION OF ALTORFER, INC., ANY COPYING OR OTHER USE EXCEPT THAT FOR WHICH IT WAS INTENDED IS PROHIBITED.</p>		<p>ALTORFER POWER SYSTEMS</p>	
<p>ALL DIMENSIONS IN INCHES UNLESS OTHERWISE SPECIFIED</p>	<p>FILE: DF/83A</p>	<p>PROJECT REFERENCE: 3516B-REMAN RENTAL PACKAGE</p>	
<p>TOLERANCES: X.X ± 0.100 X.XX ± 0.050 X.XXX ± 0.005</p>	<p>THIRD ANGLE PROJECTION</p>	<p>SCALE/SHEET SIZE: 1=25/D</p>	<p>DRAWN BY: BML</p>
<p>ANGULAR ± 1'</p>	<p>SHEET: 1 OF 1</p>	<p>DATE: 09-07-17</p>	<p>WORK ORDER NUMBER: -</p>
<p>TITLE: FILMS GROUP</p>	<p>DRAWING NUMBER: 83A226-1</p>	<p>DATE: 09-07-17</p>	<p>WORK ORDER NUMBER: -</p>