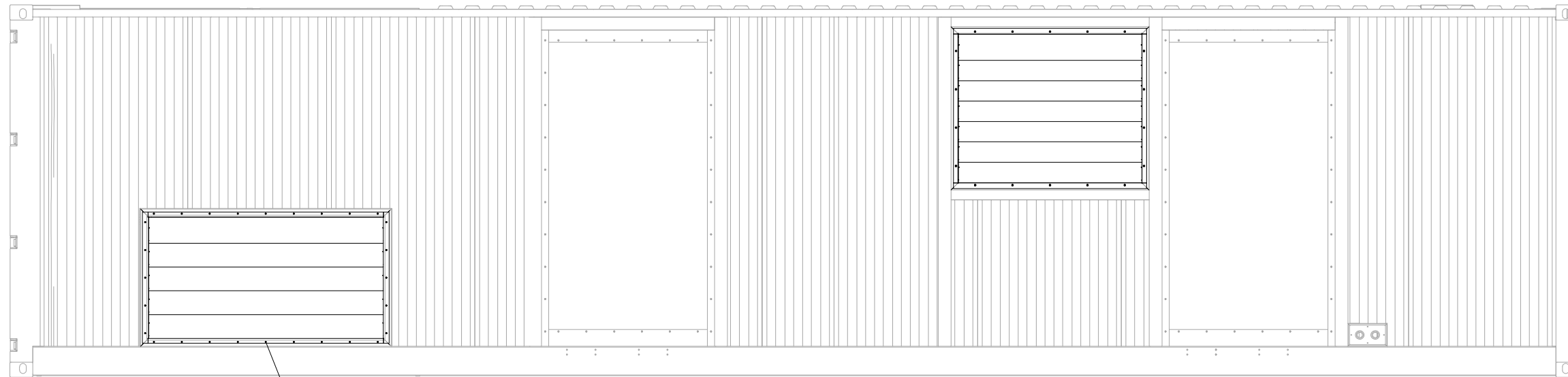
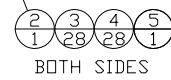


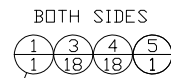
ITEM	QTY.	PART NO.	DESCRIPTION
1	2	080 100-00	LOUVER ASSEMBLY - 59.12"x49.06"
2	2	070 100-00	LOUVER ASSEMBLY - 75.50"x40.16"
3	92	198-4776	WASHER - HARD
4	92	8T-4908	BOLT - M8x1.25
5	1	0221241	SIKAFLEX SEALANT - WHITE



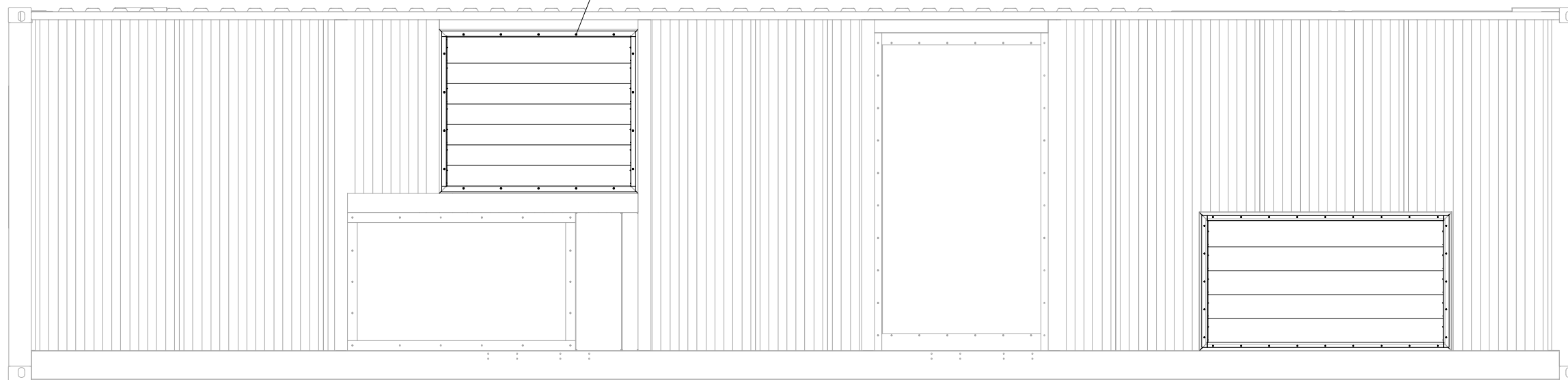
CURB SIDE VIEW



BOTH SIDES



BOTH SIDES



STREET SIDE VIEW

NOTE A: LOUVER ASSEMBLY (080 100-00) QTY. 2 & (070 100-00) QTY. 2 SHIPPED WITH CONTAINER

DATE BY	ALTORFER		ALTORFER POWER SYSTEMS	
	6315 W. FAUBER RD. BARTONVILLE, IL 61607		PHONE (309) 697-1234 FAX (309) 282-7546	
CHANGE NOTICE	ALL DIMENSIONS IN INCHES UNLESS OTHERWISE SPECIFIED	FILE	PROJECT REFERENCE	
	TOLERANCES: X.X ± 0.100 X.XX ± 0.050 X.XXX ± 0.005	DF/83A	3516B-HYBRID RENTAL PACKAGE	
	THIRD ANGLE PROJECTION	SCALE/SHEET SIZE	DRAWN BY	QUOTE NUMBER
	ANGULAR ± 1'	1=20/D	BML	-
TITLE	SHEET	DATE	WORK ORDER NUMBER	
1	1 OF 1	09/14/17	-	
NO	DRAWING NUMBER			
	LOUVER MOUNTING GROUP			83A225