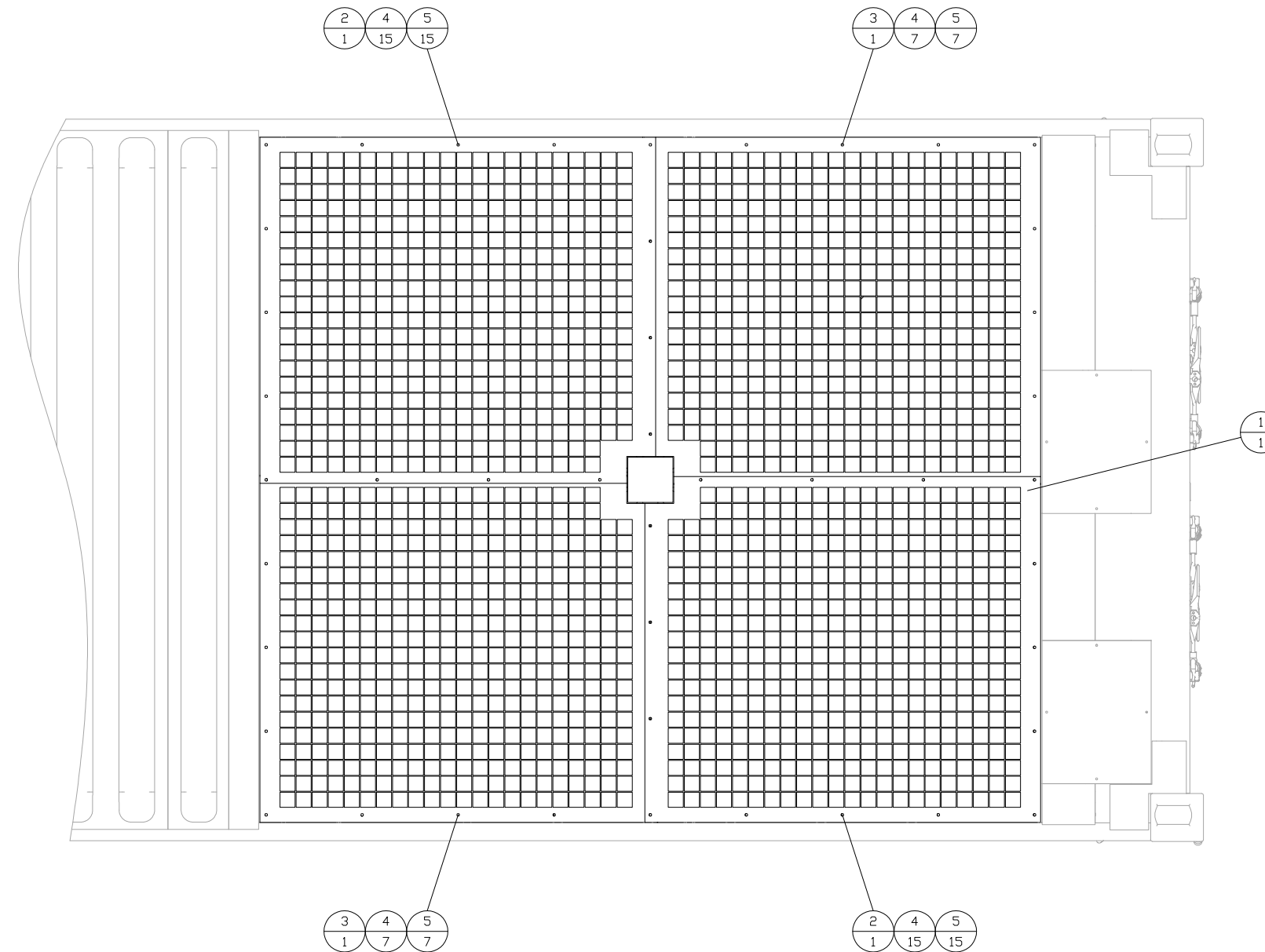


ITEM	QTY.	PART NO.	DESCRIPTION
1	2	83C324	RADIATOR EXHAUST SCREEN 1
2	2	83C325	RADIATOR EXHAUST SCREEN 2
3	44	8T-4908	M8-1.25x25mm FLANGED HEAD BOLT
4	44	377-4313	WASHER-SEALING M8



TOP VIEW

07/10/2017 D. BOLLING	07/10/18 BML	ALTORFER POWER SYSTEMS 6315 W. FAUBER RD. PHONE (309) 697-1234 BARTONVILLE, IL 61607 FAX (309) 282-7546	
3 UPDATE HARDWARE P/N'S	2 UPDATED EXH SCREEN PRT #'S	THIS DOCUMENT CONTAINS PROPRIETARY INFORMATION OF ALTORFER, INC. WITHOUT THE WRITTEN PERMISSION OF ALTORFER, INC., ANY COPYING OR OTHER USE EXCEPT THAT FOR WHICH IT WAS INTENDED IS PROHIBITED.	
1 UPDATED HARDWARE	1 CHANGE NOTICE	ALL DIMENSIONS IN INCHES UNLESS OTHERWISE SPECIFIED	FILE DF/83A PROJECT REFERENCE 3516B-HYBRID RENTAL PACKAGE
NO.	NO.	TOLERANCES: X.X ± 0.100 X.XX ± 0.050 X.XXX ± 0.005	SCALE/SHEET SIZE 1=10/D DRAWN BY BML QUOTE NUMBER -
		THIRD ANGLE PROJECTION	DATE 09/18/17 WORK ORDER NUMBER -
		ANGULAR ± 1°	SHEET 1 OF 1 TITLE EXHAUST SCREEN - MOUNTING GROUP DRAWING NUMBER 83A224-3