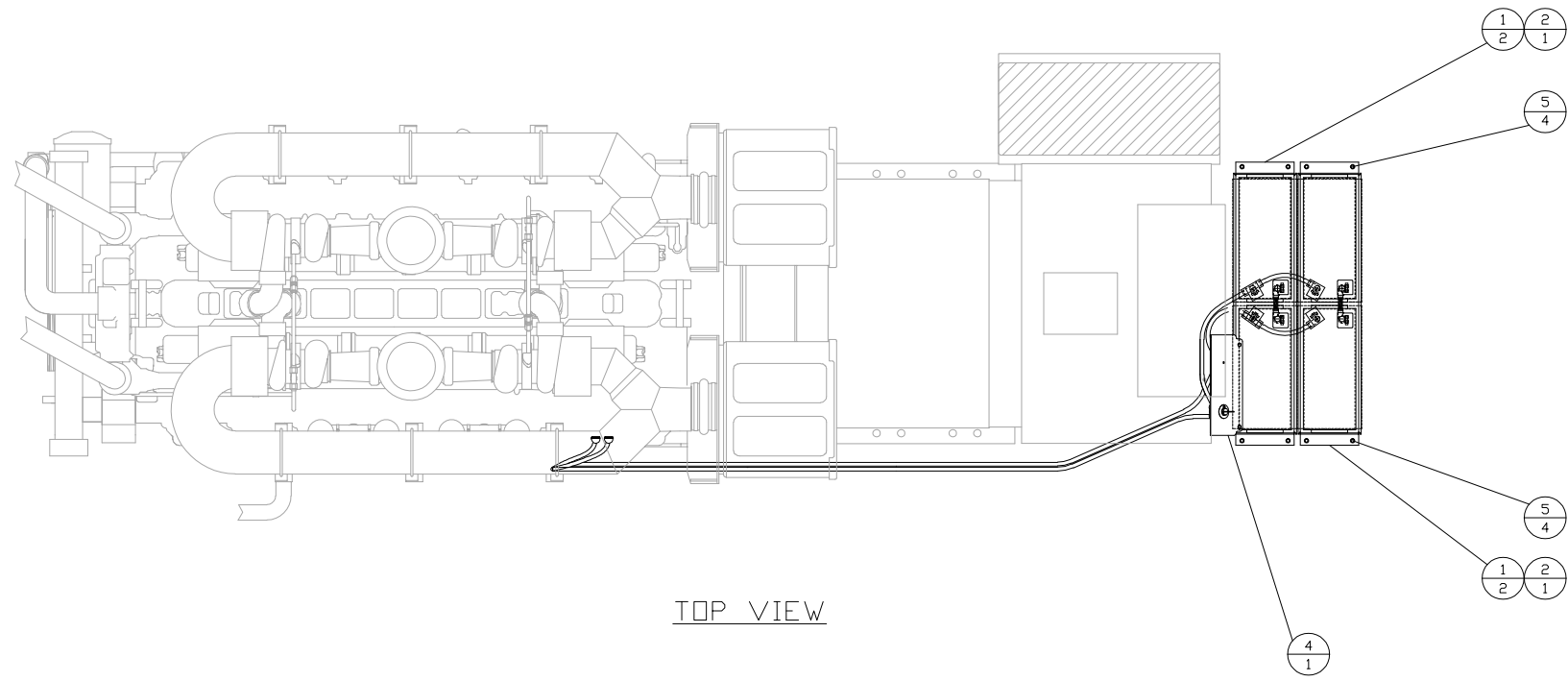
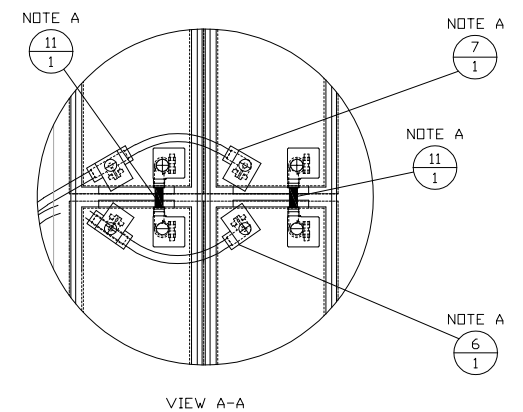


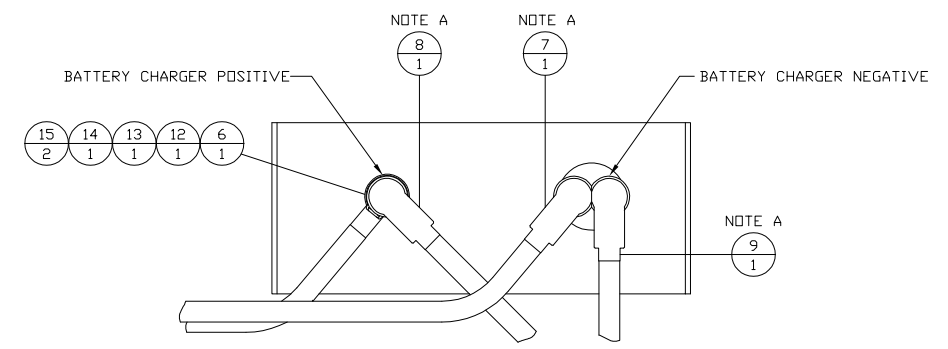
ITEM	QTY.	P/N DESCRIPTION
1	4	9M-5775-MAT-BATTERY
2	2	176-1057-SUPPORT GROUP-BATTERY
3	-	---
4	1	324-6981-SUPPORT GROUP-BATTERY
5	8	174-9194-BOLT-FLANGED M8X1.25
6	1	88E178-CABLE ASSEMBLY
7	1	88E179-CABLE ASSEMBLY
8	1	88E180-CABLE ASSEMBLY
9	1	88E181-CABLE ASSEMBLY
10	4	BB12-PLYWOOD BATTERY BOARD (PAINT BLACK)
11	2	54E135 - B01 CABLE ASSEMBLY
12	1	11126216-THREADED ROD 3/8"-16THD X 2.00 LG.
13	1	3B-4506-LOCK WASHER-3/8"
14	1	6V-8801-NUT-3/8"-16 THD
15	2	5P-1075-WASHER HARD-3/8" DS
16	65cm	3E-6600-TRIMLOCK
17	BULK	PLT55-CD-TY RAP (LARGE BLK)



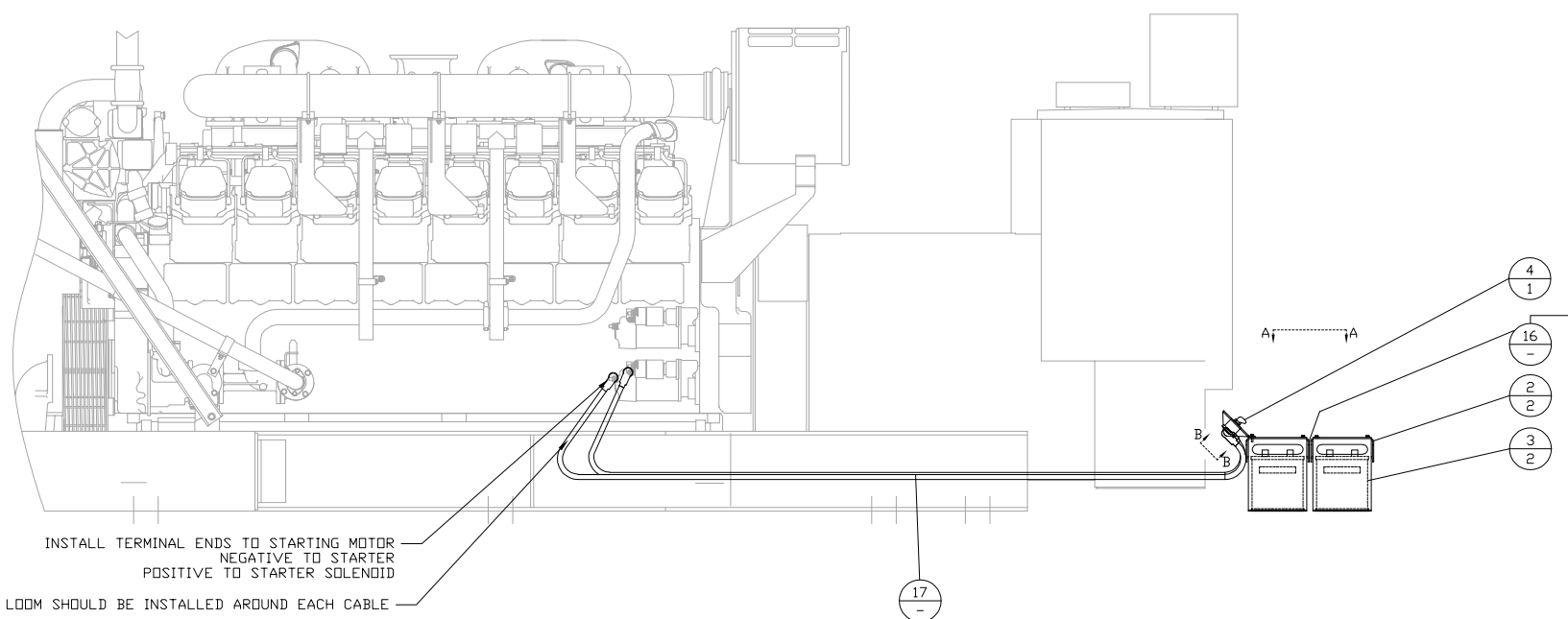
TOP VIEW



VIEW A-A



VIEW B-B (NTS)



LEFT SIDE VIEW

INSTALL TERMINAL ENDS TO STARTING MOTOR
 NEGATIVE TO STARTER
 POSITIVE TO STARTER SOLENOID
 3/4" LOOM SHOULD BE INSTALLED AROUND EACH CABLE

INSTALL TRIMLOCK ON BATTERY RACK FLANGES

NOTE A: BATTERY CABLES RECEIVED IN 88E200

DATE		BY		BY	
01/22/19					
1	REMOVED 254-4933	<p>ALTORFER POWER SYSTEMS 6315 W. FAUBER RD. PHONE (309) 697-1234 BARTONVILLE, IL 61607 FAX (309) 282-7546</p>			
<p>THIS DOCUMENT CONTAINS PROPRIETARY INFORMATION OF ALTORFER, INC. WITHOUT THE WRITTEN PERMISSION OF ALTORFER, INC., ANY COPYING OR OTHER USE EXCEPT THAT FOR WHICH IT WAS INTENDED IS PROHIBITED.</p>		FILE	PROJECT REFERENCE		
<p>ALL DIMENSIONS IN INCHES UNLESS OTHERWISE SPECIFIED</p>		DF/83A	3516B-REMAN RENTAL PACKAGE		
<p>TOLERANCES: X.X ± 0.100 X.XX ± 0.050 X.XXX ± 0.005</p>		SCALE/SHEET SIZE	DRAWN BY	QUOTE NUMBER	
<p>THIRD ANGLE PROJECTION</p>		1=15/D	BML	-	
<p>ANGULAR ± 1°</p>		SHEET	DATE	WORK ORDER NUMBER	
		1 OF 1	07/10/17	-	
TITLE		DRAWING NUMBER			
BATTERY GROUP		83A219-01			