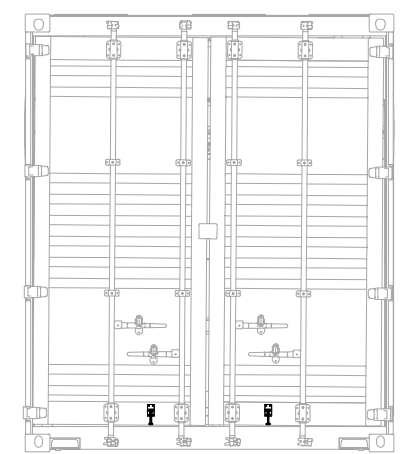
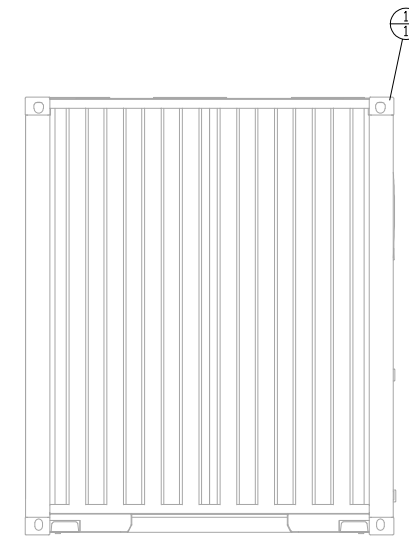
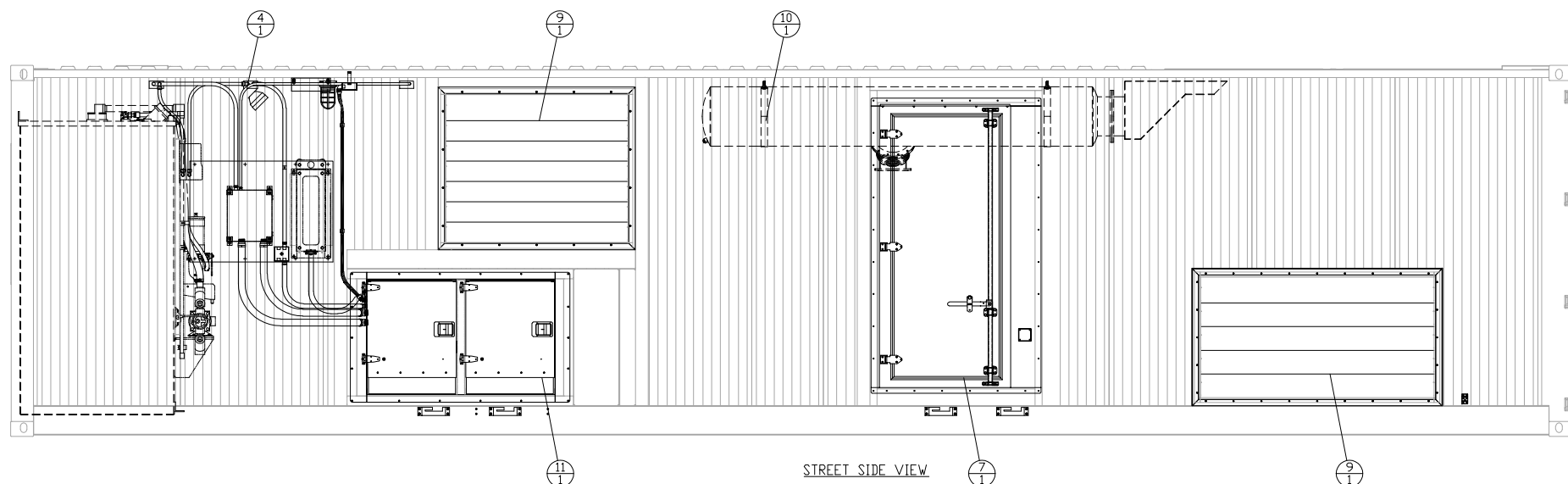
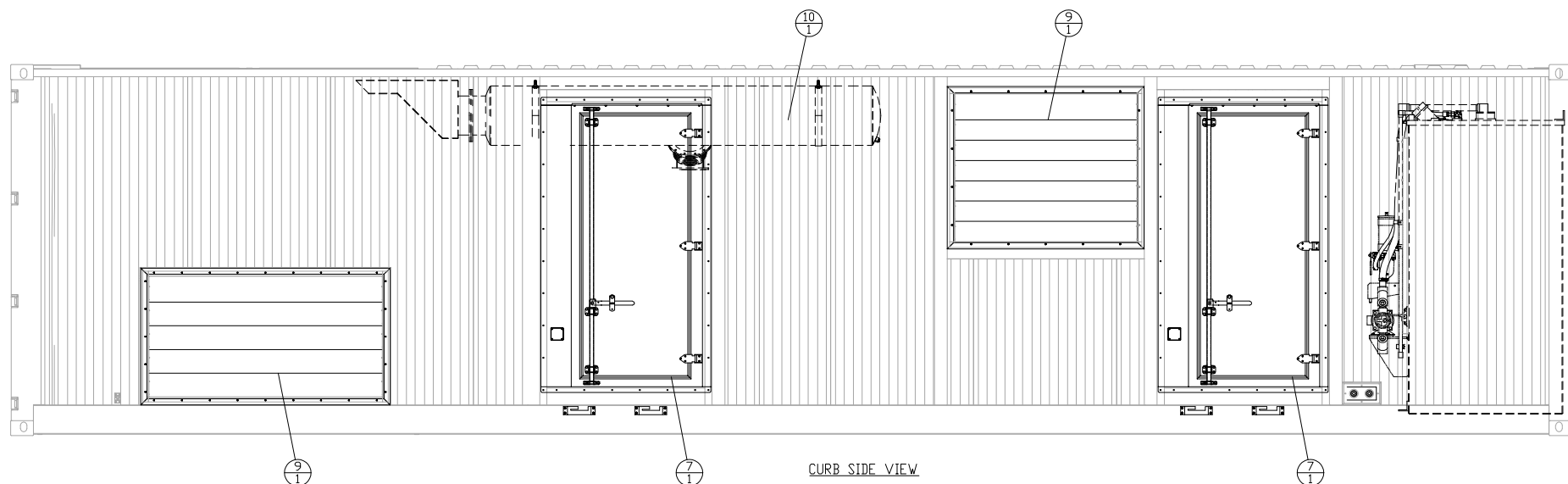
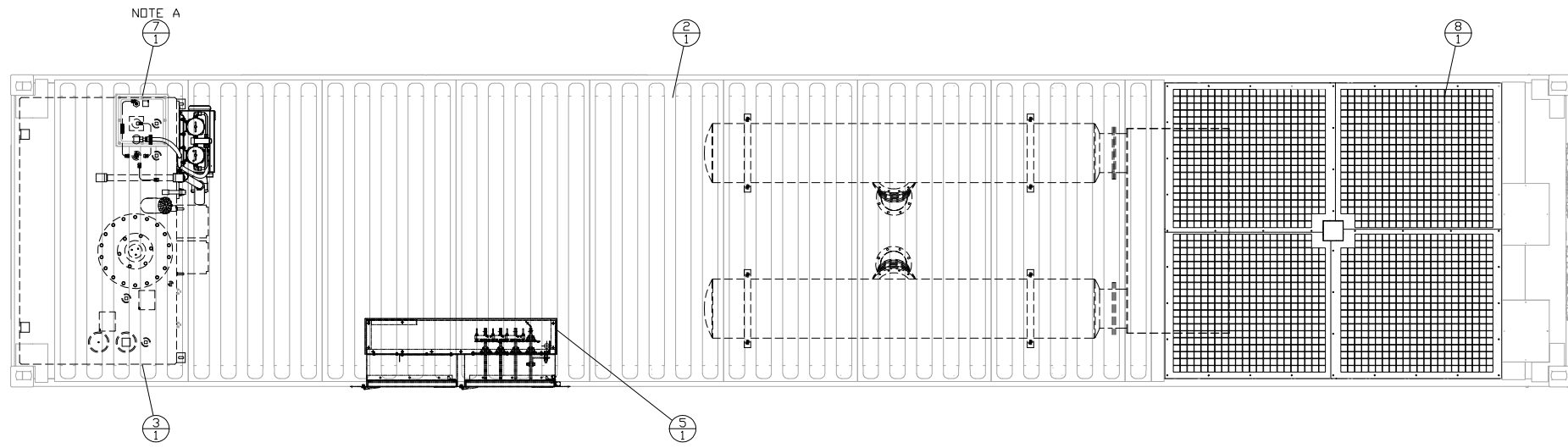


ITEM	QTY.	P/N	DESCRIPTION
1	1	83C200	CONTAINER ASSEMBLY 3516B
2	1	83A202	CONTAINER INSULATION GROUP
3	1	83A203	FUEL TANK MOUNTING GROUP
4	1	83A204	CONTAINER WIRING GROUP
5	1	83A205	LOAD PAN TRANSITION GROUP
6	1	83A214	UMR MOUNTING & CONNECTION GROUP
7	1	83A215	CONTAINER ACCESS MOUNTING GROUP
8	1	83A224	EXHAUST SCREEN MOUNTING GROUP
9	1	83A225	LOUVER MOUNTING GROUP
10	1	83A228	EXHAUST MOUNTING GROUP
11	1	88A120	LOAD PAN MOUNTING GROUP



01/23/19 DATE BY DATE BY		<b>ALTORFER</b> 6315 W. FAUBER RD. PHONE (309) 697-1234 BARTONVILLE, IL 61607 FAX (309) 282-7546	
ALL DIMENSIONS IN INCHES UNLESS OTHERWISE SPECIFIED		FILE DF/83A	PROJECT REFERENCE 3516B-REMAN RENTAL PACKAGE
TOLERANCES: X.X ± 0.100 X.XX ± 0.060 X.XXX ± 0.005	THIRD ANGLE PROJECTION	SCALE/SHEET SIZE 1=25/D	DRAWN BY BML
ANGULAR ± 1'		SHEET 1 OF 1	DATE 07/03/18
TITLE CONTAINER ARRANGEMENT			QUOTE NUMBER - WORK ORDER NUMBER - DRAWING NUMBER 83A218-01