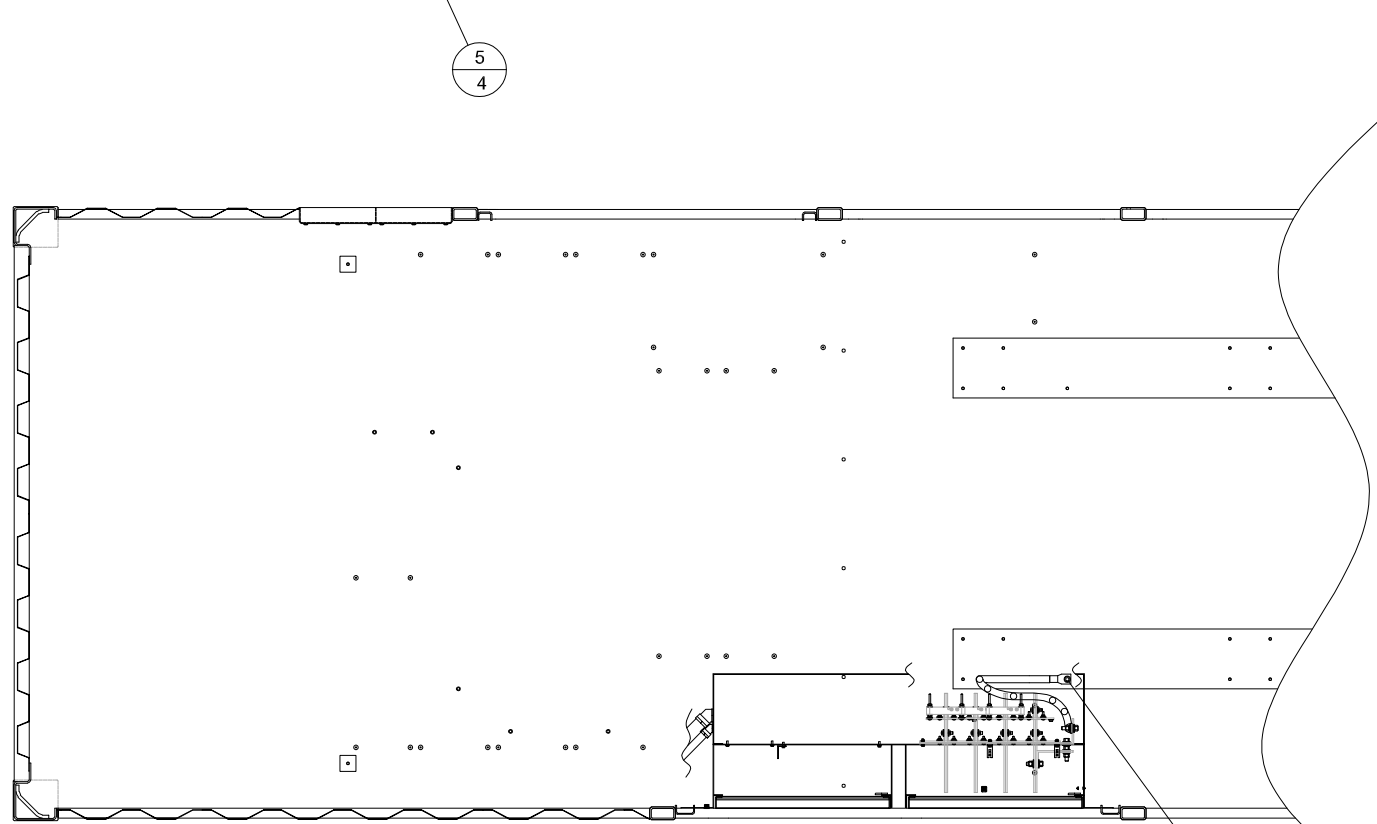
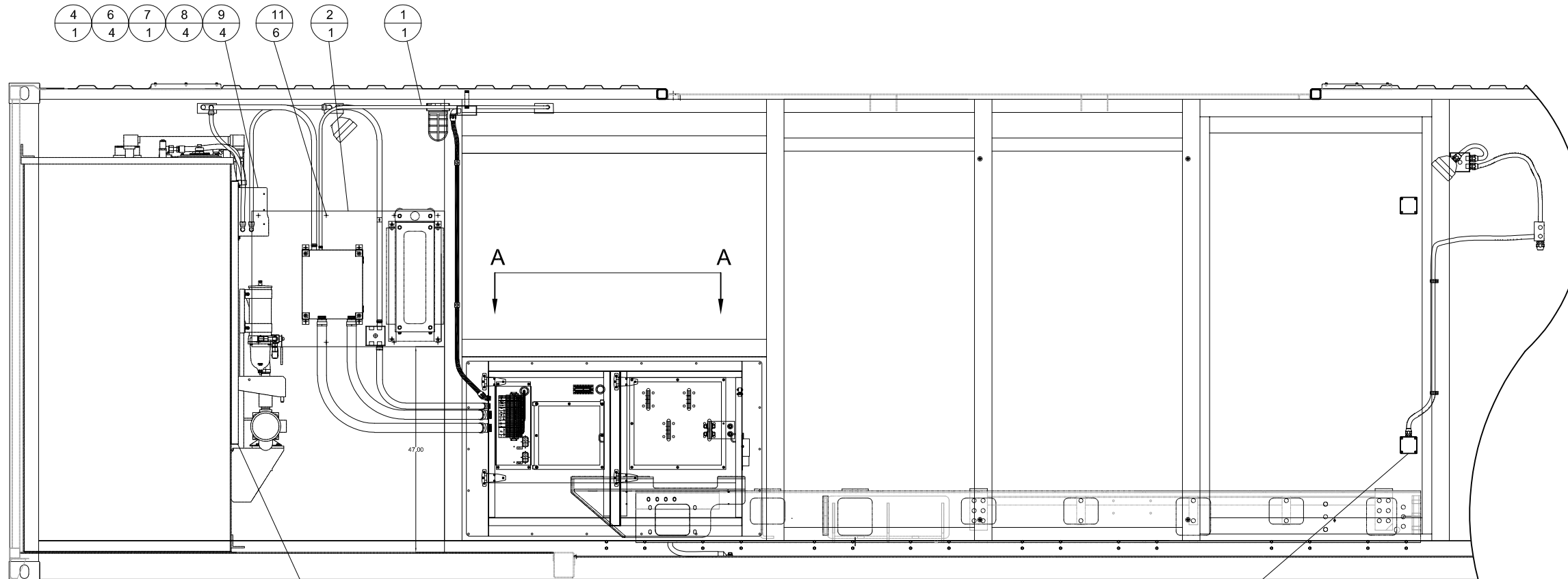


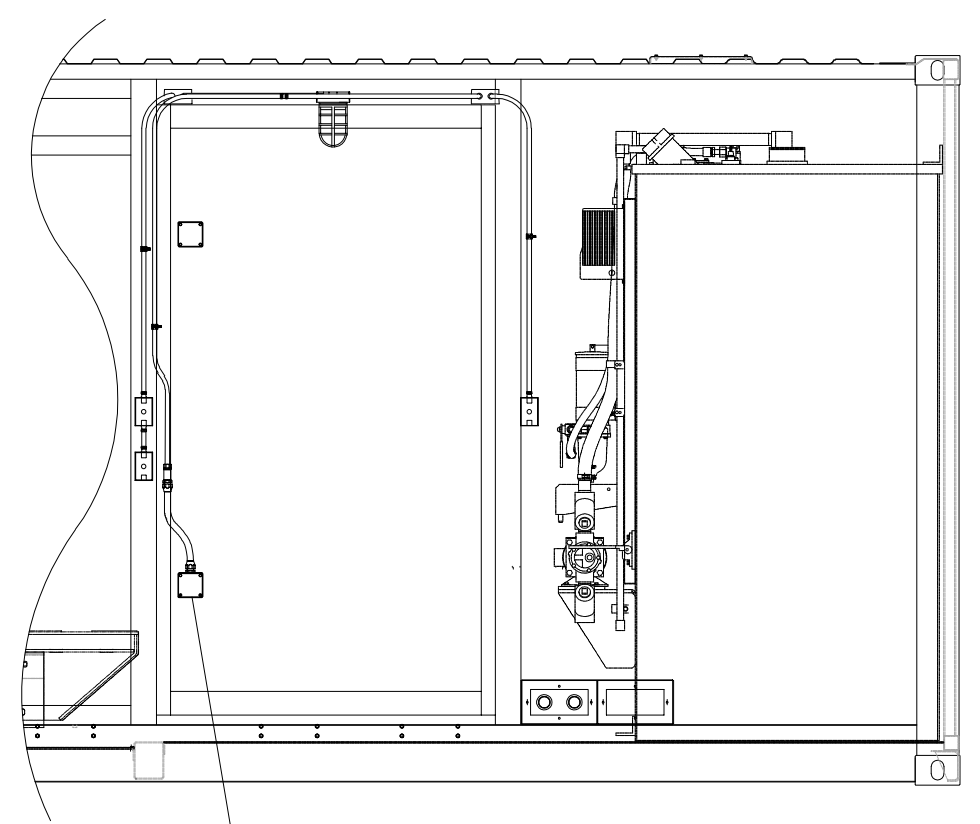
ITEM	QTY.		DESCRIPTION
1	1	83E204	CONDUIT GROUP
2	1	88E189	MOUNTING PLATE-SHORE POWER BOX/UMR
3	2	57A217	EMERGENCY STOP GROUP
4	1	286-0177	BATTERY CHARGER
5	4	201-4323	CAP - UNISTRUT
6	4	201-3160	NUT - SPRING
7	1	86C169	COVER - BATTERY
8	4	8T-8908	BOLT - 1/4-20
9	4	8T-4205	WASHER - FLAT
10	1	88E190	CONN GROUP - CONTAINER GROUND
11	6	KB100	SCREW 1/4"-20x1.00"



VIEW A-A
SCALE 1:1

NOTE A

NOTE A: GROUND CABLE - 'GNDB' IN 88E148 CABLE GROUP
CONNECTS CONTAINER FLOOR
VIA HARDWARE FROM 88E190 GROUP
WITH 88E151 GROUND BAR
VIA HARDWARE FROM 88E149 GROUP



		ALTORFER POWER SYSTEMS 6315 W. FAUBER RD. PHONE (309) 697-1234 BARTONVILLE, IL 61607 FAX (309) 282-7546	
02/18/2018 D. ROLING	DATE BY	FILE DF183A	PROJECT REFERENCE 3516B-HYBRID RENTAL PACKAGE
ALL DIMENSIONS IN INCHES UNLESS OTHERWISE SPECIFIED	SCALE/SHEET SIZE 1=15/D	DRAWN BY D. ROLING	QUOTE NUMBER 0
TOLERANCES: X.XX ± 0.100 X.XXX ± 0.005	THIRD ANGLE PROJECTION	DATE 02/18/2018	WORK ORDER NUMBER 0
ANGULAR ± 1°		SHEET 1 OF 1	DRAWING NUMBER 83A204-01
TITLE CONTAINER WIRING GROUP			