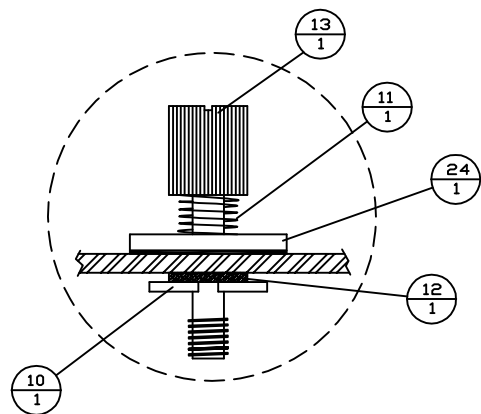
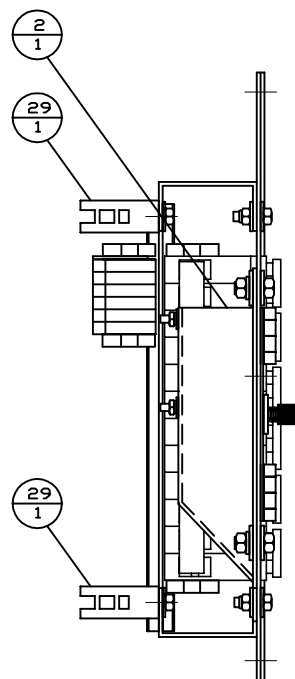
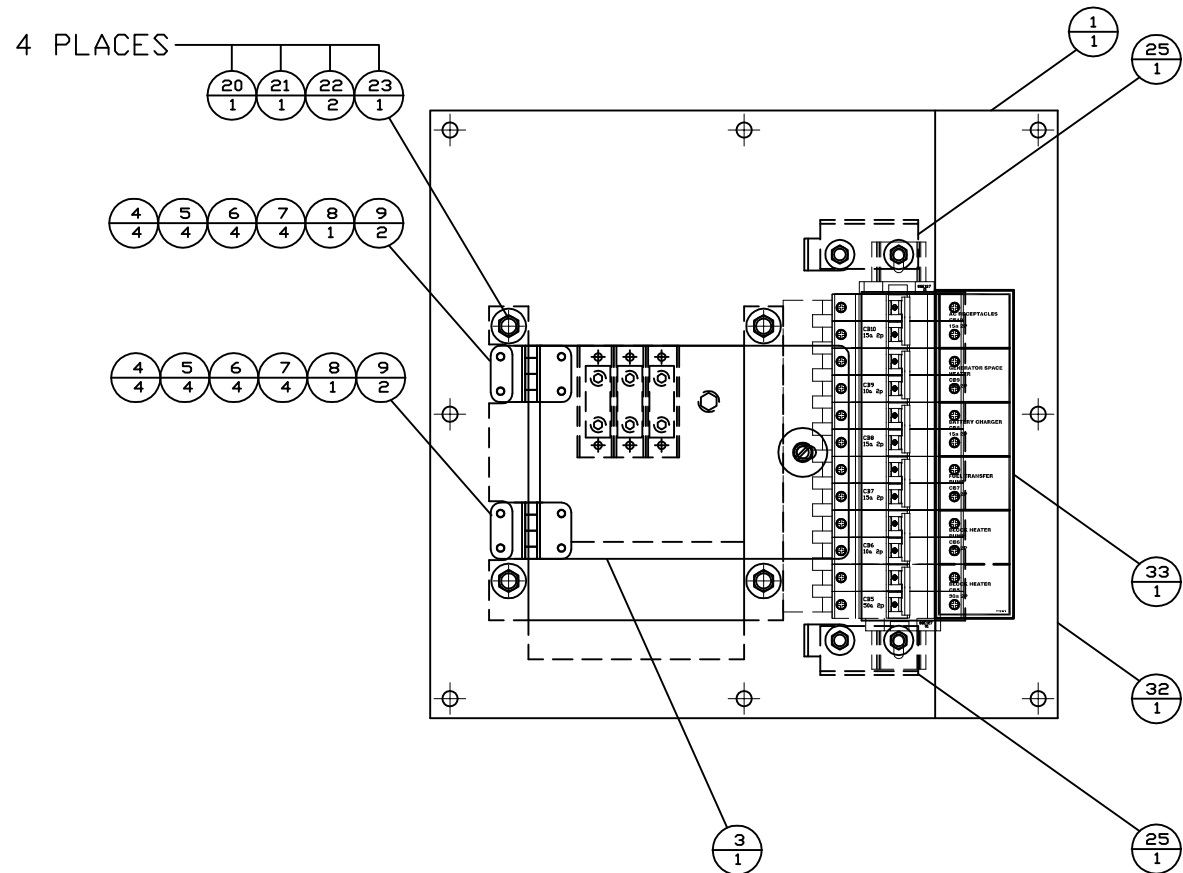
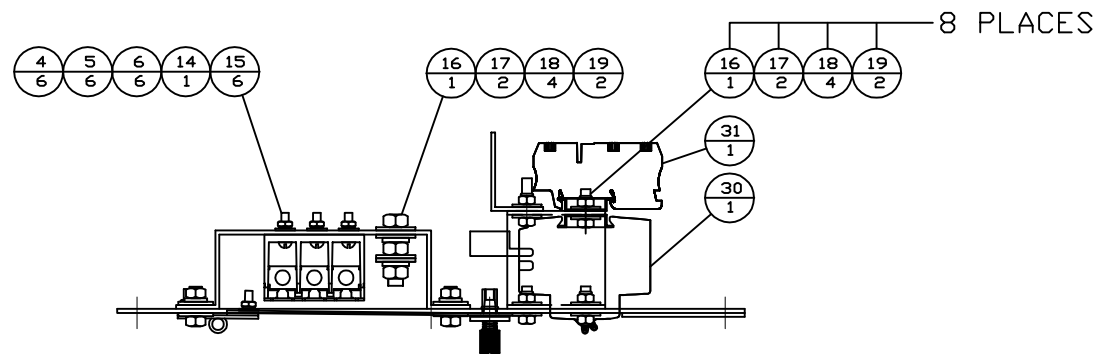


INCH 81E521



VIEW A-A
SCALE=4X

ITEM	QTY.	PART #	DESCRIPTION
1	1	81E522	SHORE POWER PLATE
2	1	88E132	SHORE POWER BLOCK MOUNT
3	1	88E133	SHORE POWER BLOCK DOOR
4	14	33614	#10 LOCK WASHER
5	14	36028	#10-24 NUT
6	14	33074	#10 FLAT WASHER
7	8	72158	10-24 x 0.75 TAPERED HEAD SCREW
8	2	SSHINGE	HINGE
9	4	54D148	HINGE - LOAD GASKET
10	1	90102A030	SPLIT RETAINING SPRING
11	1	9435K5	SPRING
12	1	95630A445	TEFLON FLAT WASHER
13	1	91035A625	THUMB SCREW
14	1	1EF57	SPLICER TERMINAL BLOCK
15	6	28968	#10-24x0.75 SCREW
16	1	74937	3/8-16 x 1.50 SIL-BRONZE BOLT
17	2	74965	3/8-16 SIL-BRONZE NUT
18	4	0179460	3/8 SIL-BRONZE FLAT WASHER
19	2	75238	3/8 SIL-BRONZE LOCK WASHER
20	4	4M-0061	5/16-18x0.75 BOLT
21	4	6V-8189	5/16-18 NUT
22	8	8T-4224	5/16 FLAT WASHER
23	4	3B-4505	5/16 LOCK WASHER
24	1	317-5700	1/4 NEOPRENE WASHER
25	2	81E524	BRACKET
26	8	8T-8908	BOLT - 1/4"-20x1"
27	16	8T-4205	WASHER - 1/4"
28	8	3E-9865	NUT - 1/4" NYLOK
29	2	156-6175	CLIP - LADDER
30	1	81E523	BLOCK AS SHORE POWER
31	1	81E525	BLOCK AS - NEUTRAL - GROUND
32	1	81E527	DEAD FRONT
33	1	81E528	FILM - CB IDENT

NOTE: SHEETMETAL COMPONENTS LOCATED IN 81E520BM

DATE BY		ALTORFER POWER SYSTEMS 6315 W. FAUBER RD. PHONE (309) 697-1234 BARTONVILLE, IL 61607 FAX (309) 282-7546			
				THIS DOCUMENT CONTAINS PROPRIETARY INFORMATION OF ALTORFER, INC. WITHOUT THE WRITTEN PERMISSION OF ALTORFER, INC., ANY COPYING OR OTHER USE EXCEPT THAT FOR WHICH IT WAS INTENDED IS PROHIBITED.	
CHANGE NOTICE	ALL DIMENSIONS IN INCHES UNLESS OTHERWISE SPECIFIED	FILE DF/81E	PROJECT REFERENCE APS1000A		
	TOLERANCES: X.X ± 0.100 X.XX ± 0.060 X.XXX ± 0.005	THIRD ANGLE PROJECTION	SCALE/SHEET SIZE 1=5/B		
	ANGULAR ± 1'	SHEET 1 OF 1	DRAWN BY D. RICHARDSON		
	TITLE SHORE POWER CUSTOMER CONNECTION	DATE 9/3/14	QUOTE NUMBER 0		
3	2	1	ND	WORK ORDER NUMBER 0	DRAWING NUMBER 81E521