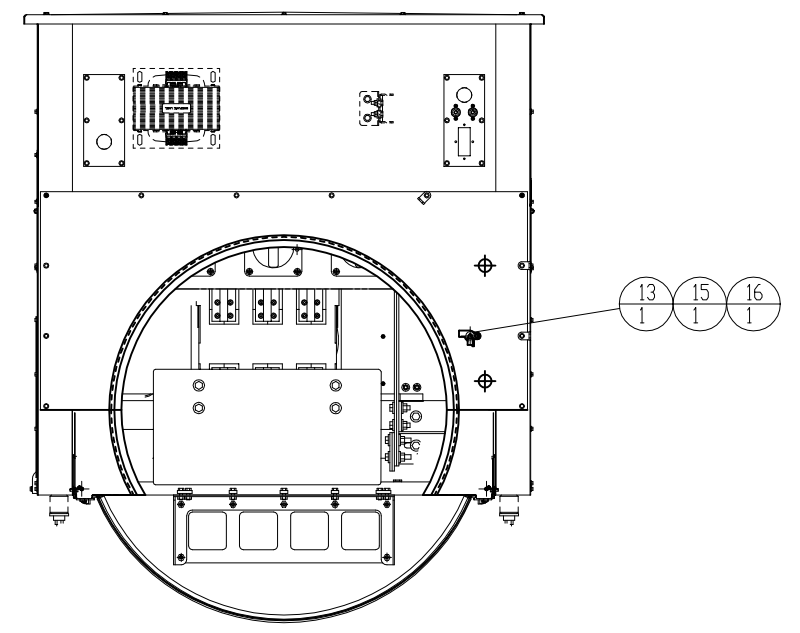
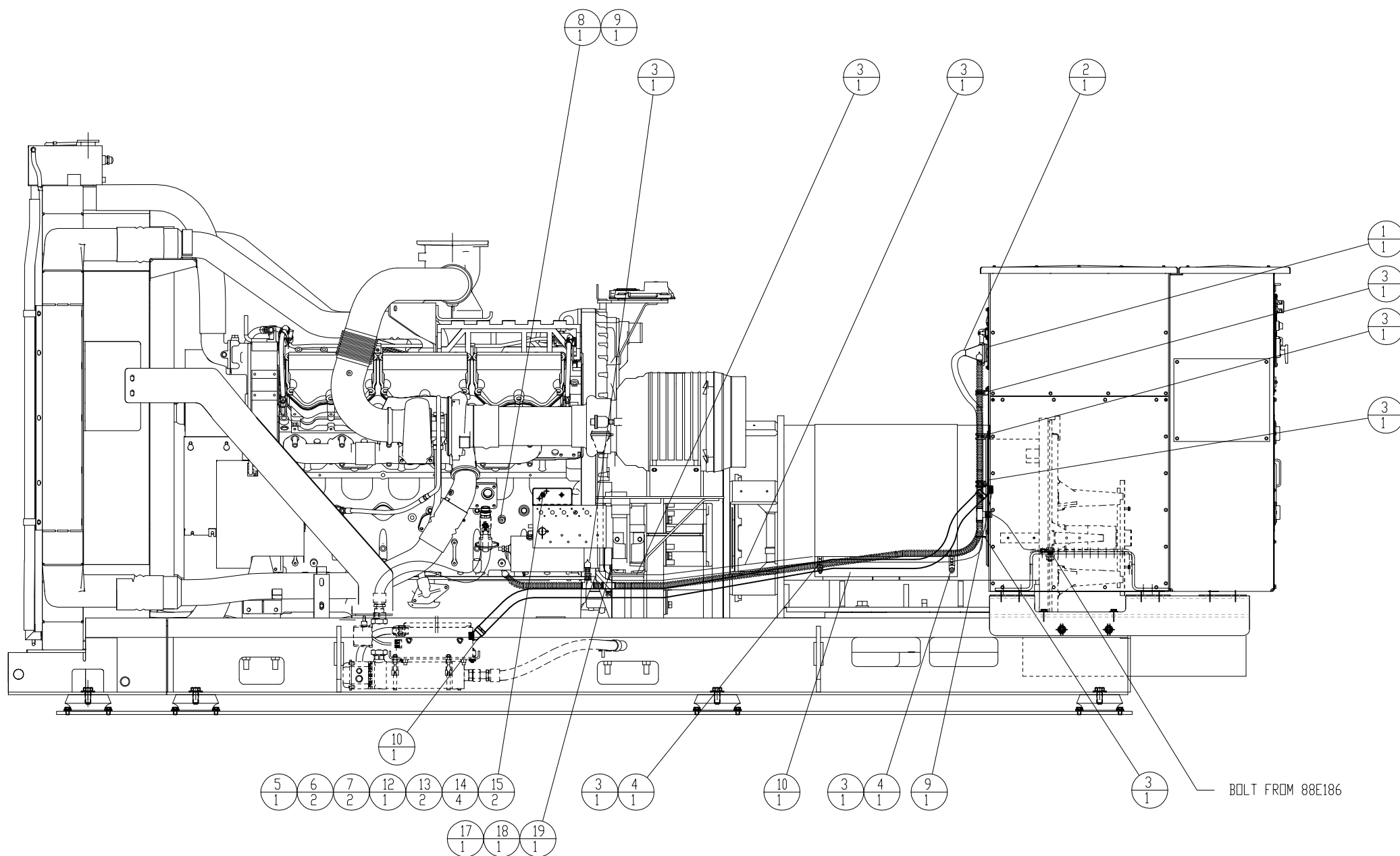


ITEM	QTY	MEAS UNIT	PART NO.	NAME
PARTS LIST				
1	1		81E516	HARNESS GP- CB PWR
2	1		361-7126	HARNESS GP- ENG
3	9		7K-1181	STRAP - CABLE
4	2		156-6175	CLIP - LADDER
5	1		6T-3644	BREAKER - 20A
6	2		9X-8486	SCREW - MACHINE
7	2		4B-4863	WASHER
8	1		4L-6454	BOLT 3/8-16x1Lg
9	1		5P-1075	WASHER-HARD
10	2		252-7454	CONNECTOR AS.
11	230	cm	252-7452	CONDUIT
12	1		81E533	BRACKET - CB MOUNT
13	2		8T-9364	BOLT
14	4		8T-4205	WASHER-HARD
15	2		6V-8185	NUT
16	1		9X-0352	RECEPTACLE
17	1		4P-7581	CLIP - LADDER
18	1		4M-0061	BOLT 5/16x3/4
19	1		8T-4224	WASHER



BOLT FROM 88E186

1/15/15 DKR	DATE BY	<b>ALTORFER</b>		<b>ALTORFER POWER SYSTEMS</b>		
		6315 W. FAUBER RD. BARTONVILLE, IL 61607		PHONE (309) 697-1234 FAX (309) 282-7546		
1	PROTOTYPE UPDATE CHANGE NOTICE	THIS DOCUMENT CONTAINS PROPRIETARY INFORMATION OF ALTORFER, INC. WITHOUT THE WRITTEN PERMISSION OF ALTORFER, INC., ANY COPYING OR OTHER USE EXCEPT THAT FOR WHICH IT WAS INTENDED IS PROHIBITED				
		ALL DIMENSIONS IN INCHES UNLESS OTHERWISE SPECIFIED	FILE DF\81E	PROJECT REFERENCE APS1000A		
		TOLERANCES: X.X ± 0.100 X.XX ± 0.060 X.XXX ± 0.005	THIRD ANGLE PROJECTION	SCALE/SHEET SIZE 1=10/D	DRAWN BY D. RICHARDSON	QUOTE NUMBER 0
		ANGULAR ± 1°		SHEET 1 OF 1	DATE 8/27/14	WORK ORDER NUMBER 0
2	1	TITLE DOGHOUSE INTERFACE GP.			DRAWING NUMBER 81E515-01	