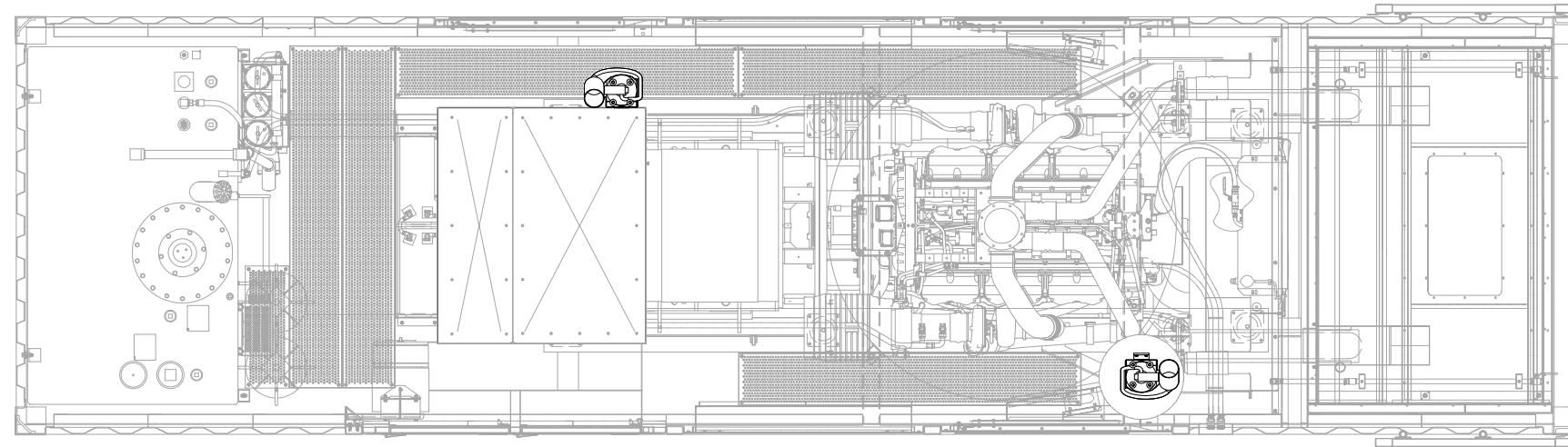
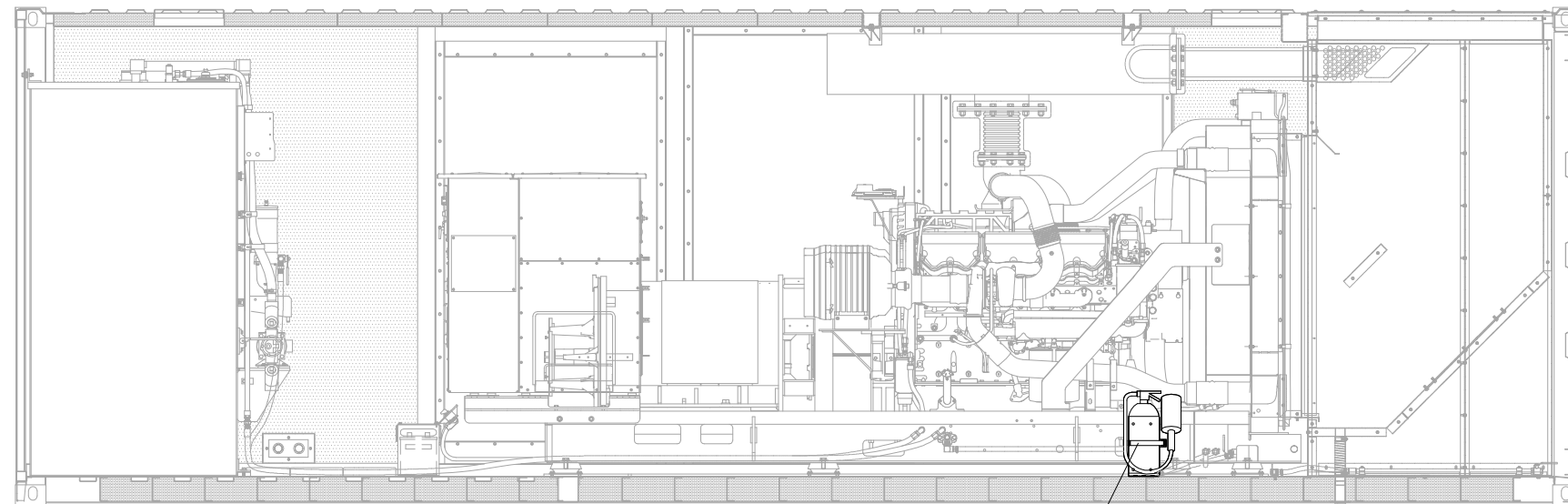


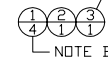
ITEM	QTY.	PART NO. & DESCRIPTION
1	8	174-9194-BOLT-FLANGE (MBX1.25) (28N.m)
2	2	154-8378-BRACKET AS.
3	2	102-8444-EXTINGUISHER AS.
4	4	0125656-M8-NUTSERT



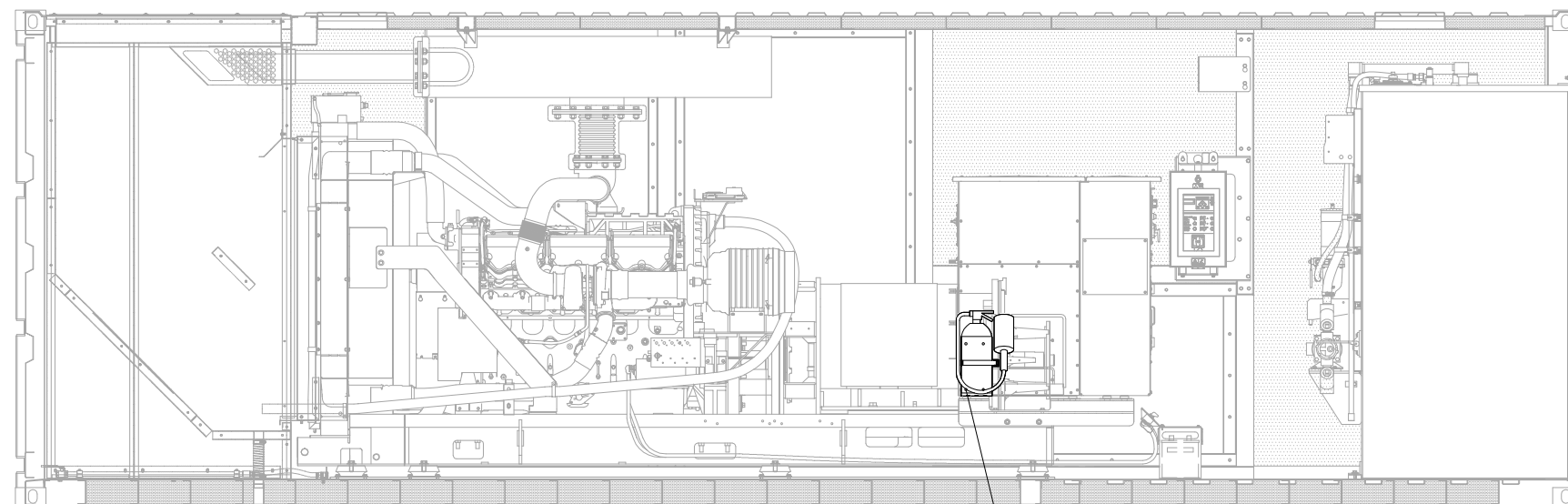
TOP VIEW



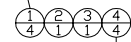
SECTION VIEW (LOOKING INTO STREET SIDE)



NOTE B



SECTION VIEW (LOOKING INTO CURB SIDE)



NOTE A

NOTE A: INSTALL M8 NUTSERTS INTO THE SIDE OF THE DOGHOUSE USING THE BRACKET HOLE SPACING. ALIGN FLUSH TO BOTTOM OF THE DOGHOUSE AND THE REAR CORNER.

NOTE B: INSTALL BRACKET ON M8 LUGS ON FLOOR AT THIS LOCATION.

		ALTORFER POWER SYSTEMS 6315 W. FAUBER RD. PHONE (309) 697-1234 BARTONVILLE, IL 61607 FAX (309) 262-7546	
		THIS DOCUMENT CONTAINS PROPRIETARY INFORMATION OF ALTORFER, INC. WITHOUT THE WRITTEN PERMISSION OF ALTORFER, INC., ANY COPYING OR OTHER USE EXCEPT THAT FOR WHICH IT WAS INTENDED IS PROHIBITED.	
CHANGE NOTICE ALL DIMENSIONS IN INCHES UNLESS OTHERWISE SPECIFIED TOLERANCES: XX ± 0.100 XXX ± 0.060 XXXX ± 0.005 ANGULAR ± 1°	FILE DF/81A	PROJECT REFERENCE APS1000A	
	SCALE/SHEET SIZE 1=20/D	DRAWN BY JAM	QUOTE NUMBER -
	SHEET 1 OF 1	DATE 01-14-15	WORK ORDER NUMBER -
	TITLE FIRE EXTINGUISHER MOUNTING GROUP		DRAWING NUMBER 81A526-00