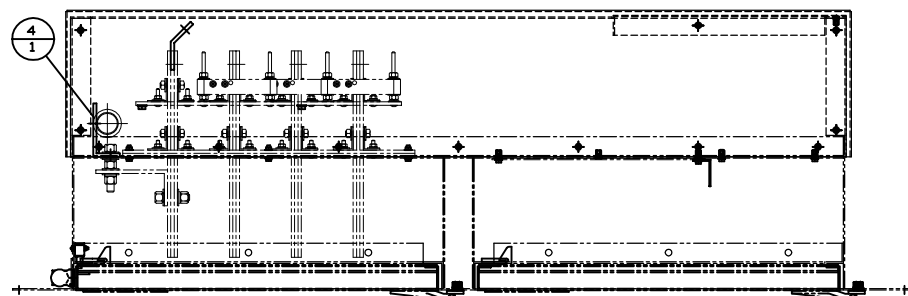
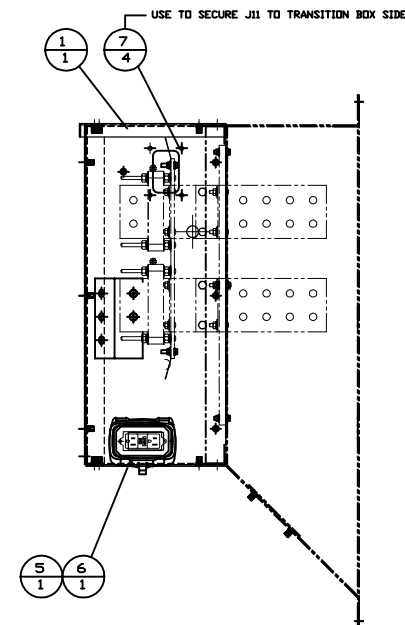
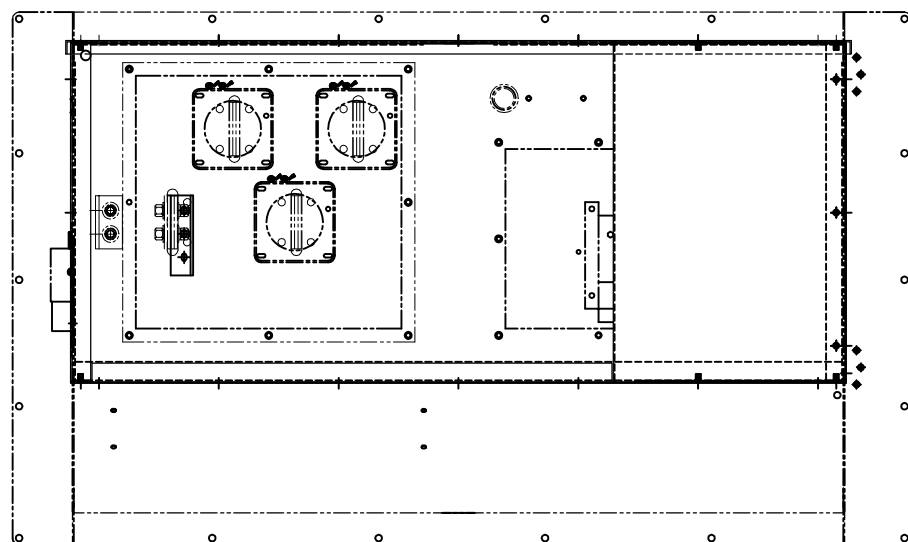
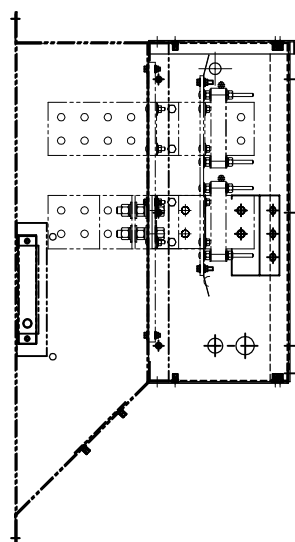
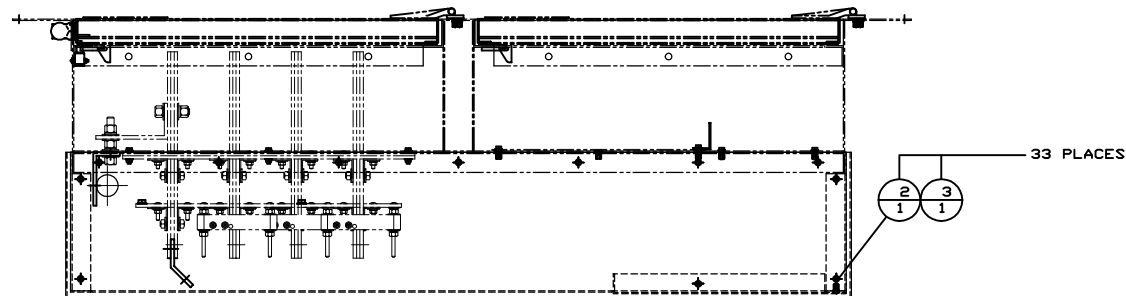


INCH 81A521

ITEM	QTY.	P/N	DESCRIPTION
1	1	81E529	TRANSITION BOX GROUP
2	33	4M-5281	BOLT 1/4x20 - 3/4 Lg
3	33	8T-4205	WASHER - FLAT
4	1	4D-3100	GROMMET
5	1	WP1000HC	COVER - RECEPTACLE
6	1	7899-W	RECEPTACLE
7	4	254-4451	BOLT - FLANGE



		ALTORFER POWER SYSTEMS 6315 W. FAUBER RD. PHONE (309) 697-1234 BARTONVILLE, IL 61607 FAX (309) 282-7546			
		THIS DOCUMENT CONTAINS PROPRIETARY INFORMATION OF ALTORFER, INC. WITHOUT THE WRITTEN PERMISSION OF ALTORFER, INC., ANY COPYING OR OTHER USE EXCEPT THAT FOR WHICH IT WAS INTENDED IS PROHIBITED.			
CHANGE NOTICE DATE BY	ALL DIMENSIONS IN INCHES UNLESS OTHERWISE SPECIFIED	FILE DF/81A	PROJECT REFERENCE APS1000A		
	TOLERANCES: X.X ± 0.100 X.XX ± 0.060 X.XXX ± 0.005	THIRD ANGLE PROJECTION	SCALE/SHEET SIZE 1=10/C	DRAWN BY D. RICHARDSON	QUOTE NUMBER 0
	ANGULAR ± 1°		SHEET 1 OF 1	DATE 9/8/14	WORK ORDER NUMBER 0
	TITLE TRANSITION BOX INSTALLATION GROUP				DRAWING NUMBER 81A521