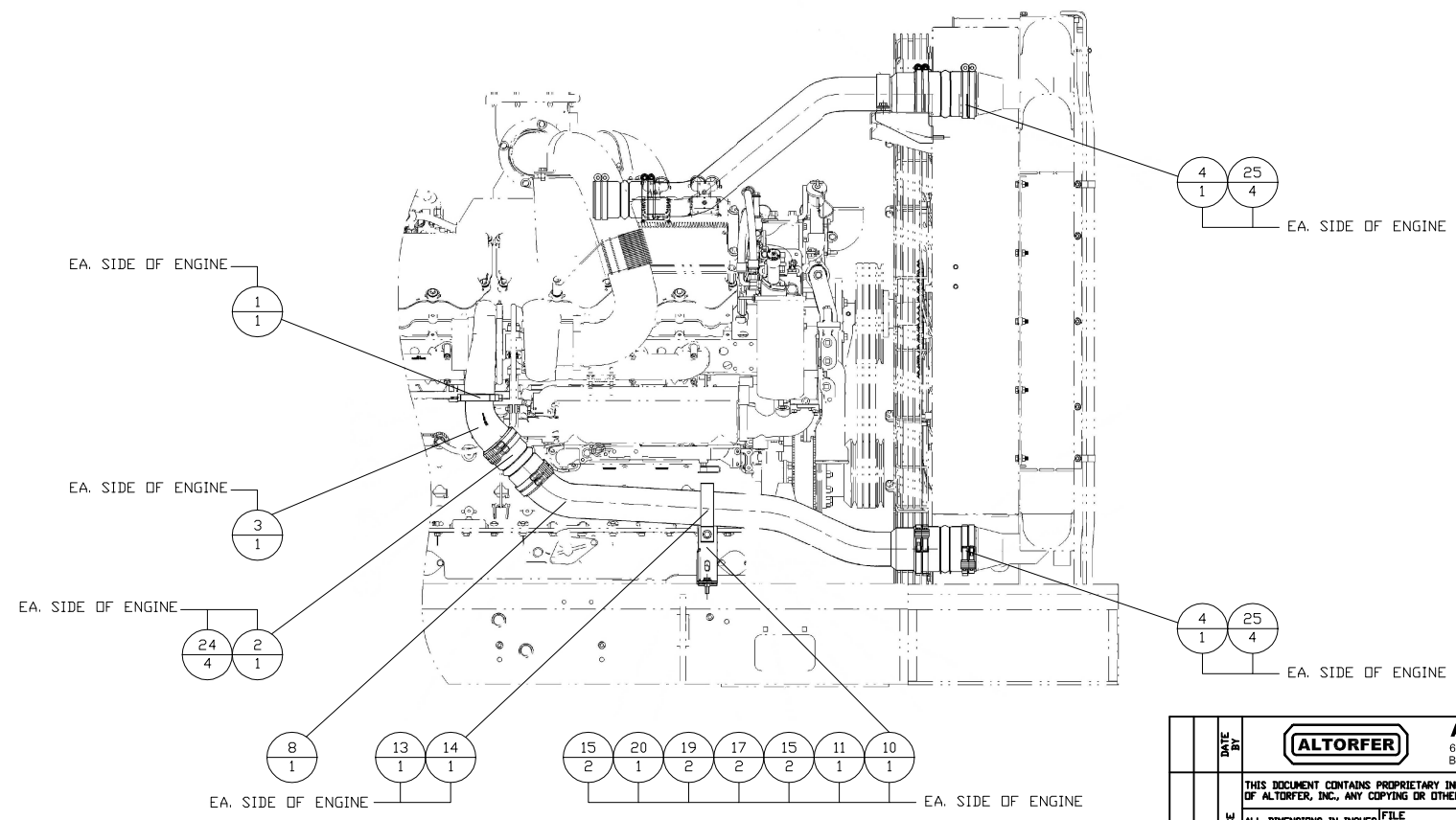
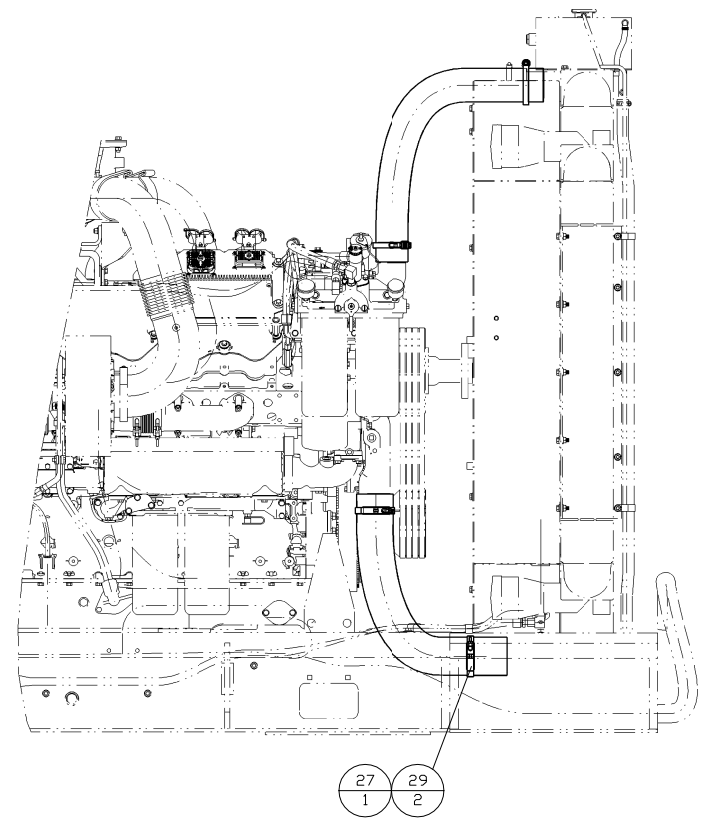


ITEM	QTY.	P/N & DESCRIPTION
1	2	127-0929-CLAMP-V-BAND
2	4	217-7088-HOSE-HUMP
3	2	217-8947-EL.BOW
4	4	337-5340-HOSE-HUMP
5	1	337-6926-TUBE
6	1	337-6927-TUBE
7	1	337-6929-TUBE
8	1	337-6930-TUBE
9	2	458-3026-PLATE
10	2	458-3027-PLATE
11	2	198-4777-WASHER-HARD
12	2	6V-5048-SEAL-O-RING
13	4	6V-6782-CLIP-TOP
14	4	6V-6783-CLIP-BOTTOM
15	12	7X-7729-WASHER-HARD
16	2	8C-3089-SEAL-O-RING
17	4	8T-4133-NUT-M10X1.5
18	2	8T-4184-BOLT-HEX HEAD M12X1.75
19	4	8T-4185-BOLT-HEX HEAD M10X1.5
20	6	8T-4186-BOLT-HEX HEAD M10X1.5
21	4	8T-4223-WASHER-HARD
22	2	8T-4244-NUT-HEX M12X1.75
23	2	9S-8002-PLUG-LD STDR 7/16-20
24	18	9X-2201-CLAMP-BAND
25	16	9X-6654-CLAMP-BAND
26	4	112-9252-SPACER
27	1	336-8953-HOSE-WATER INLET
28	1	336-8954-HOSE-WATER OUTLET
29	2	230-3671-CLAMP-T-BOLT



JWH PIPING INSTALLATION GROUP

CAC PIPING INSTALLATION GROUP

DATE BY	ALTORFER		ALTORFER POWER SYSTEMS	
	6315 W. FAUBER RD. BARTONVILLE, IL 61807		PHONE (309) 697-1234 FAX (309) 282-7546	
CHANGE NOTICE	ALL DIMENSIONS IN INCHES UNLESS OTHERWISE SPECIFIED		FILE	PROJECT REFERENCE
	TOLERANCES: XX ± 0.100 XXX ± 0.050 XXXX ± 0.005		DF/81A	APS1000A
	THIRD ANGLE PROJECTION	SCALE/SHEET SIZE	DRAWN BY	QUOTE NUMBER
	ANGULAR ± 1°	1=15/C	JAM	-
1	1 OF 2	DATE	WORK ORDER NUMBER	
		01-14-15	-	
TITLE			DRAWING NUMBER	
CAC & JWH PIPING INSTALLATION GROUP			81A512-00	