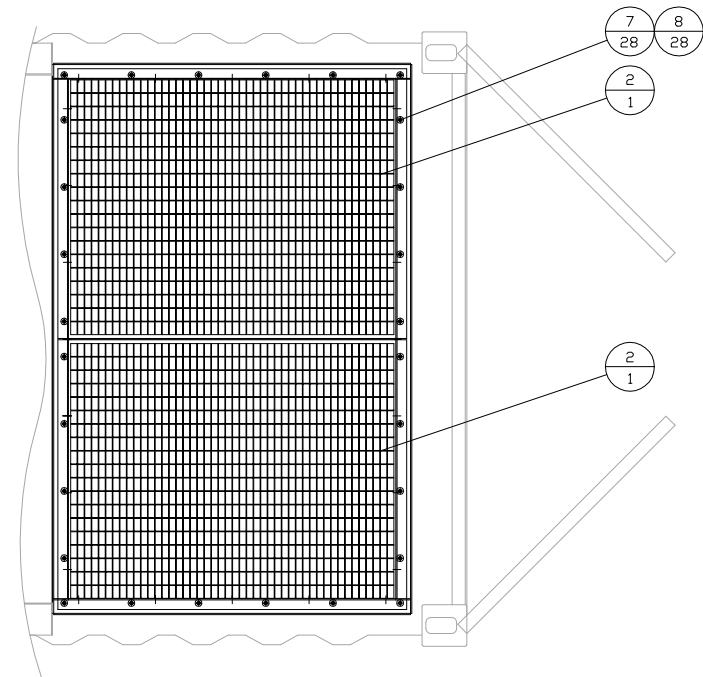
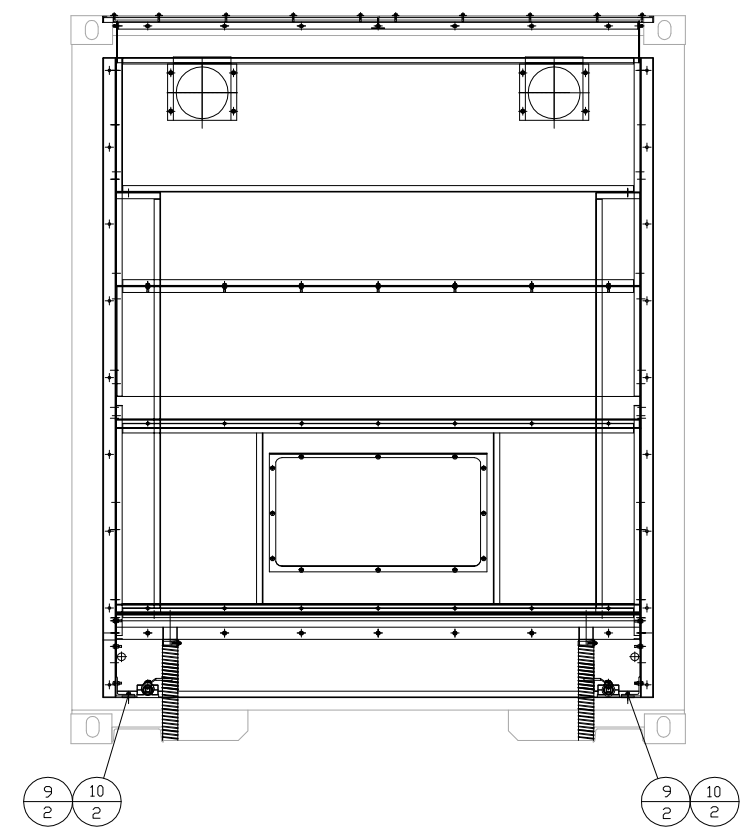
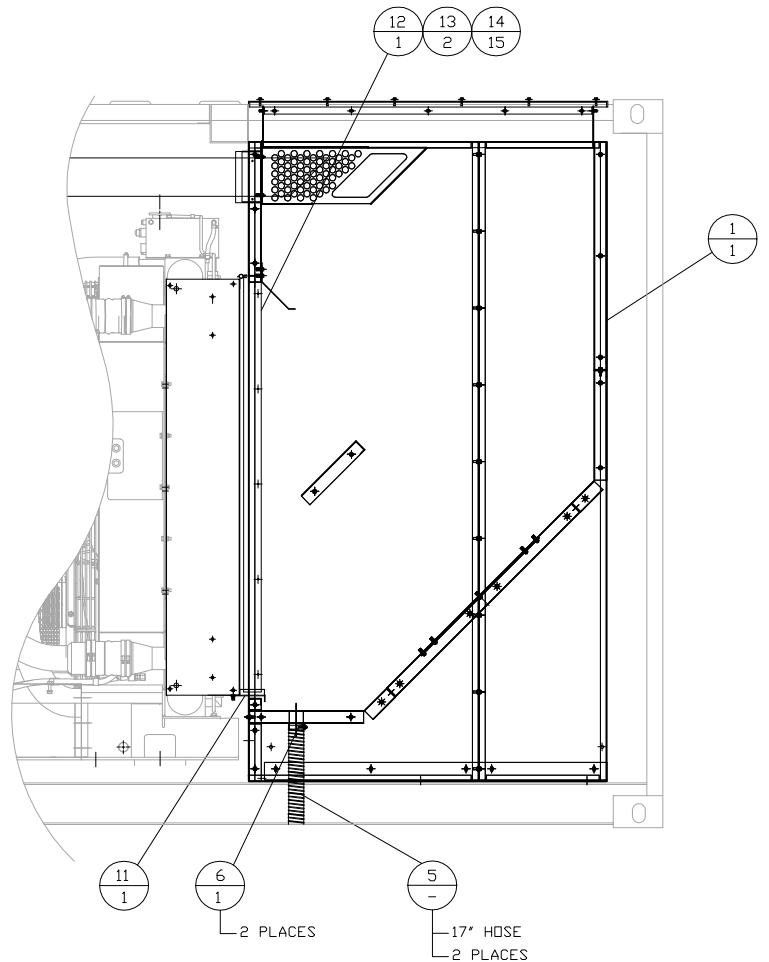
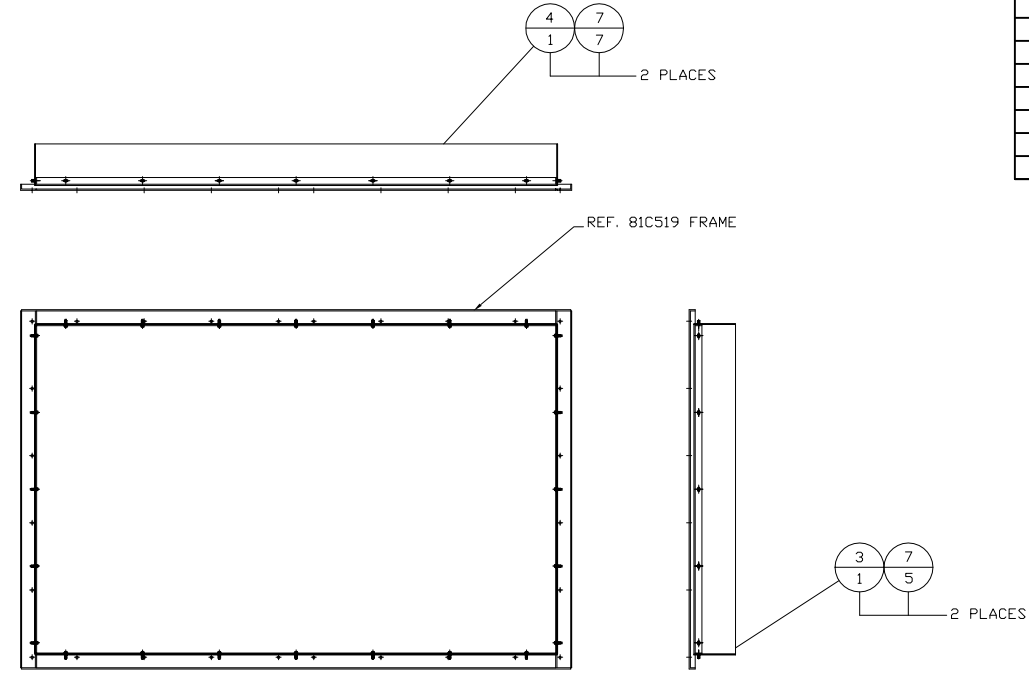


ITEM	QTY.	P/N	DESCRIPTION
1	1	81C527	DISCHARGE DIVERTER AS
2	2	81C522	SCREEN
3	2	81C523	TRANSITION AS. SH
4	2	81C524	TRANSITION AS. LG
5	86 cm	5P-1260	DUCT HOSE (2-1/4" I.D.)
6	2	180-3007	HOSE CLAMP
7	52	92323A516	BOLT-FL. HD 1/4"-20X3/4"LG.
8	28	317-5700	WASHER-NEOPREME 1/4"
9	4	8T-8917	BOLT-1/2"-13
10	4	8T-4223	WASHER-FLAT 1/2"
11	1	81C551	DUCT STRAP - BOTTOM ASSEMBLY
12	1	81C553	DUCT STRAP - LONG
13	2	81C554	DUCT STRAP - SIDES
14	15	KB100	1/4"-20 SCREW



PARTIAL - CONTAINER TOP



NOTE A: INSTALL ITEM #11-142-6868-SEAL ON ITEMS 13 AND 14.
NOTE B: SHEET METAL PARTS RECEIVED IN 81C527BM (EXCEPT SCREENS).

		ALTORFER POWER SYSTEMS 6315 W. FAUBER RD. BARTONVILLE, IL 61607 PHONE (309) 697-1234 FAX (309) 282-7546		
		THIS DOCUMENT CONTAINS PROPRIETARY INFORMATION OF ALTORFER, INC. WITHOUT THE WRITTEN PERMISSION OF ALTORFER, INC., ANY COPYING OR OTHER USE EXCEPT THAT FOR WHICH IT WAS INTENDED IS PROHIBITED.		
CHANGE NOTICE NO. 1	ALL DIMENSIONS IN INCHES UNLESS OTHERWISE SPECIFIED	FILE DF\81A	PROJECT REFERENCE APS1000A	
	TOLERANCES: X.X ± 0.100 X.XX ± 0.060 X.XXX ± 0.005	THIRD ANGLE PROJECTION	SCALE/SHEET SIZE 1=15/D SHEET 1 OF 1	DRAWN BY JAM
	ANGULAR ± 1°		DATE 01-14-15	QUOTE NUMBER WORK ORDER NUMBER DRAWING NUMBER 81A509-00