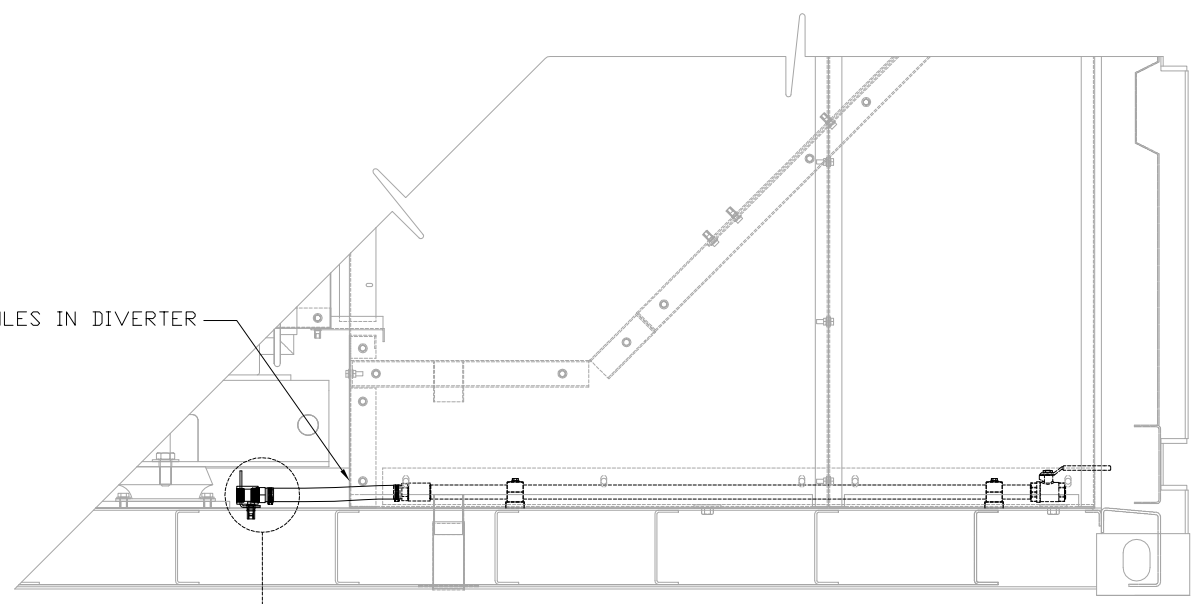


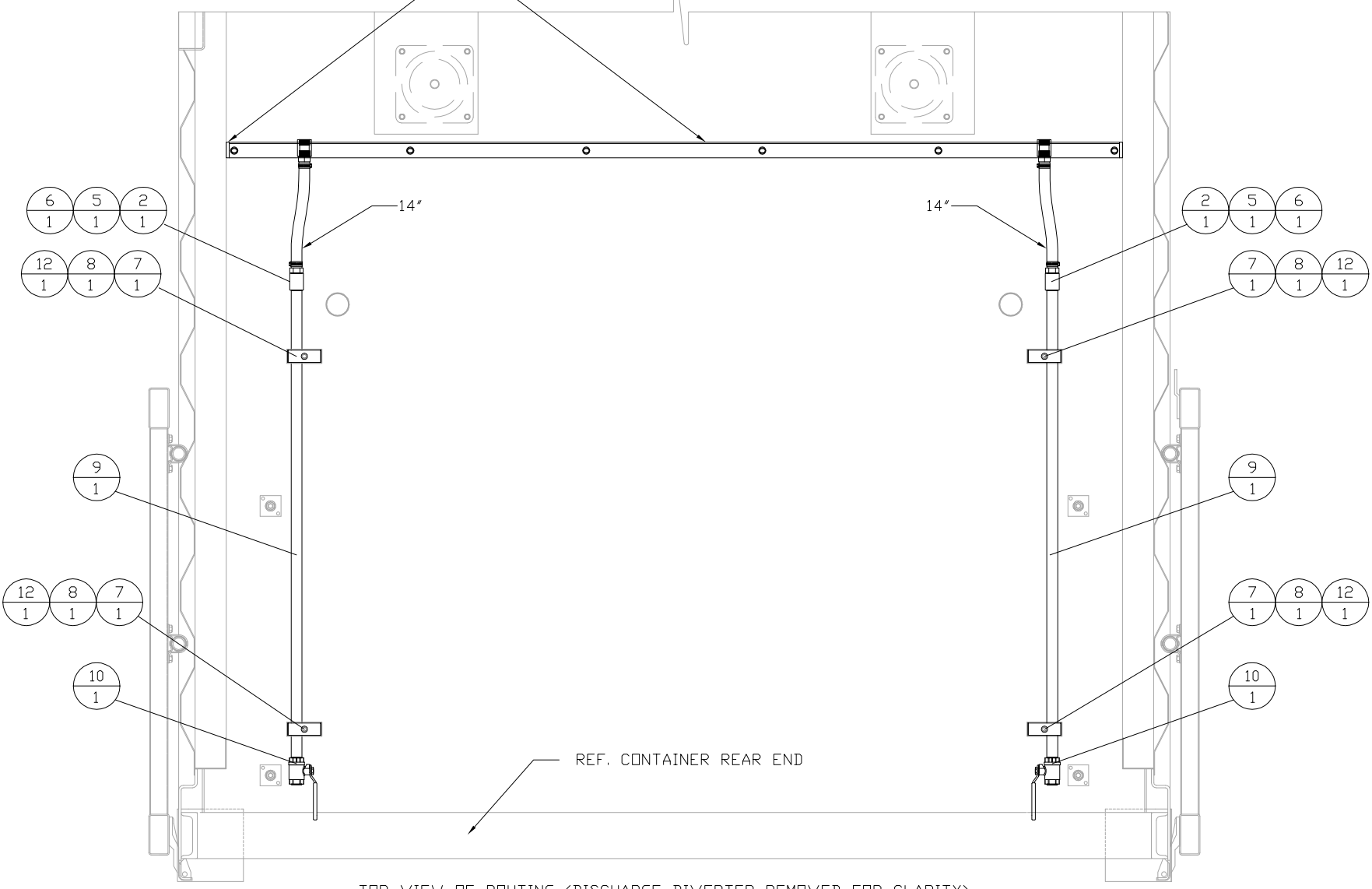
ITEM	QTY.	PART NO. & DESCRIPTION
1	1	81C508-SPILL CONTAINMENT ANGLE
2	2	3B-6490-COUPLING (3/4") (60N.m)
3	6	342-9920-BOLT-FLANGE (M8X1.25) (28N.m)
4	28 IN.	103-2555-HOSE
5	4	005-7898-CONNECTOR (30N.m)
6	4	5D-1026-CLAMP-HOSE (4.5N.m)
7	4	3252T92-STAUFF CLAMP
8	8	8T-4205-FLAT WASHER
9	2	86C191-SPILL CONTAINMENT PIPE (46" EA.)
10	2	112-4036-3/4" NPT VALVE-BALL (30N.m)
11	1	0221243-CAULK-SIKAFLEX (BLACK)
12	2	7X-2535-M6X1 BOLT

ROUTE THROUGH HOLES IN DIVERTER

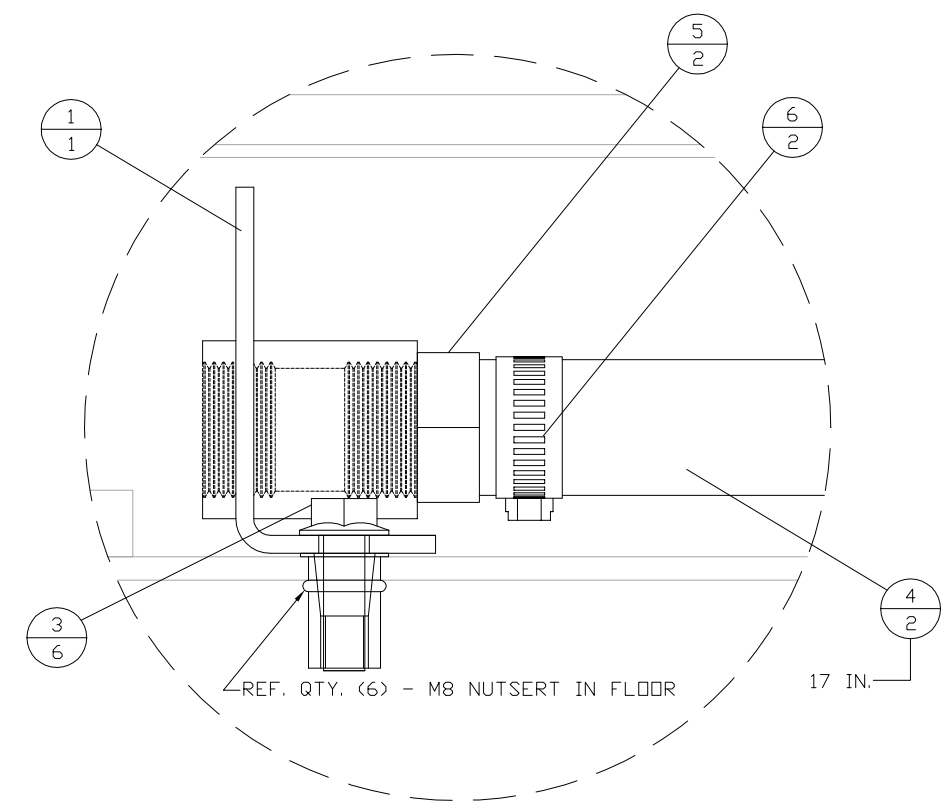


SEE DETAIL A
SIDE VIEW (THROUGH DISCHARGE DIVERTER)

REF. 81C508-SPILL CONTAINMENT ANGLE
INSTALL SIKAFLEX (BLACK) BENEATH ANGLE & BOTH SIDES



TOP VIEW OF ROUTING (DISCHARGE DIVERTER REMOVED FOR CLARITY)



DETAIL A - SCALE 10:1

		ALTORFER POWER SYSTEMS 6315 W. FAUBER RD. PHONE (309) 697-1234 BARTONVILLE, IL 61607 FAX (309) 282-7546	
		THIS DOCUMENT CONTAINS PROPRIETARY INFORMATION OF ALTORFER, INC. WITHOUT THE WRITTEN PERMISSION OF ALTORFER, INC., ANY COPYING OR OTHER USE EXCEPT THAT FOR WHICH IT WAS INTENDED IS PROHIBITED	
CHANGE NOTICE ALL DIMENSIONS IN INCHES UNLESS OTHERWISE SPECIFIED TOLERANCES: X.X ± 0.100 X.XX ± 0.060 X.XXX ± 0.005 ANGULAR ± 1°	FILE DF/81A	PROJECT REFERENCE APS1000A	
	SCALE/SHEET SIZE 1=10/C	DRAWN BY JAM	QUOTE NUMBER -
	SHEET 1 OF 1	DATE 09-23-14	WORK ORDER NUMBER -
	TITLE SPILL CONTAINMENT DRAINS GROUP		