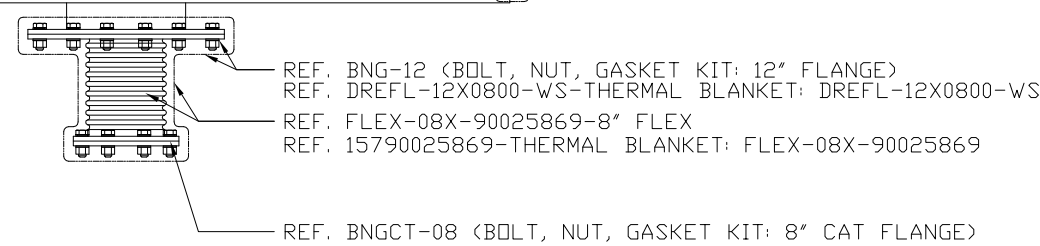
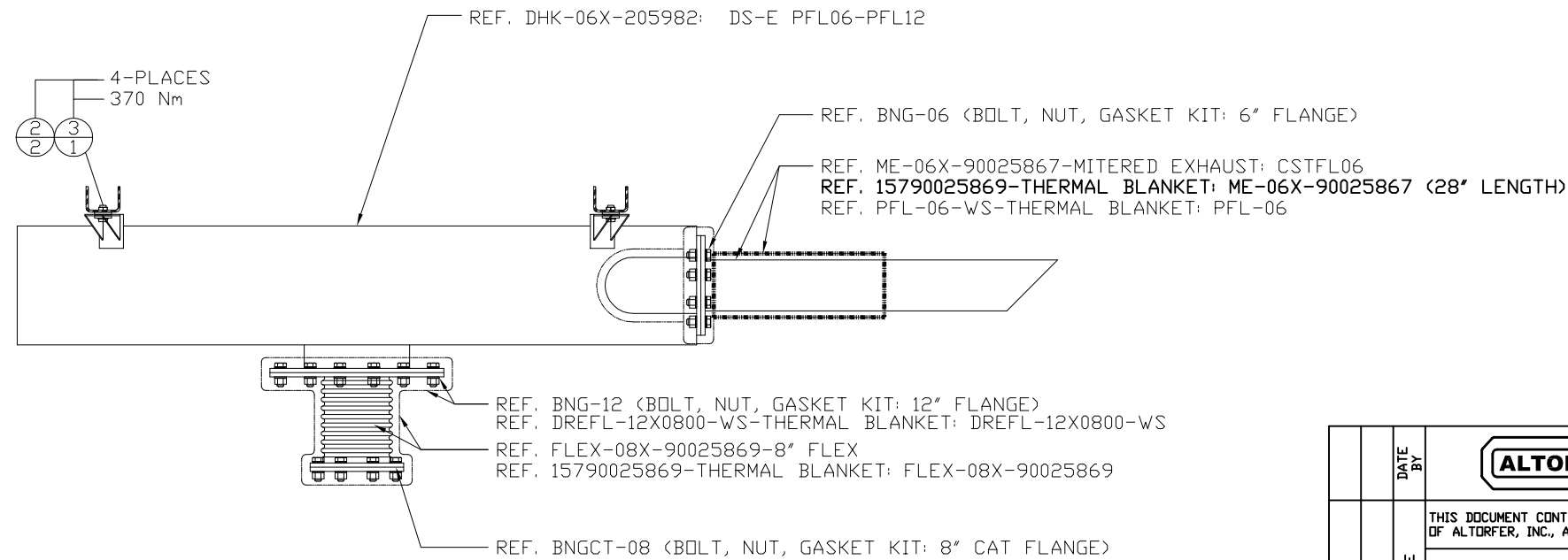
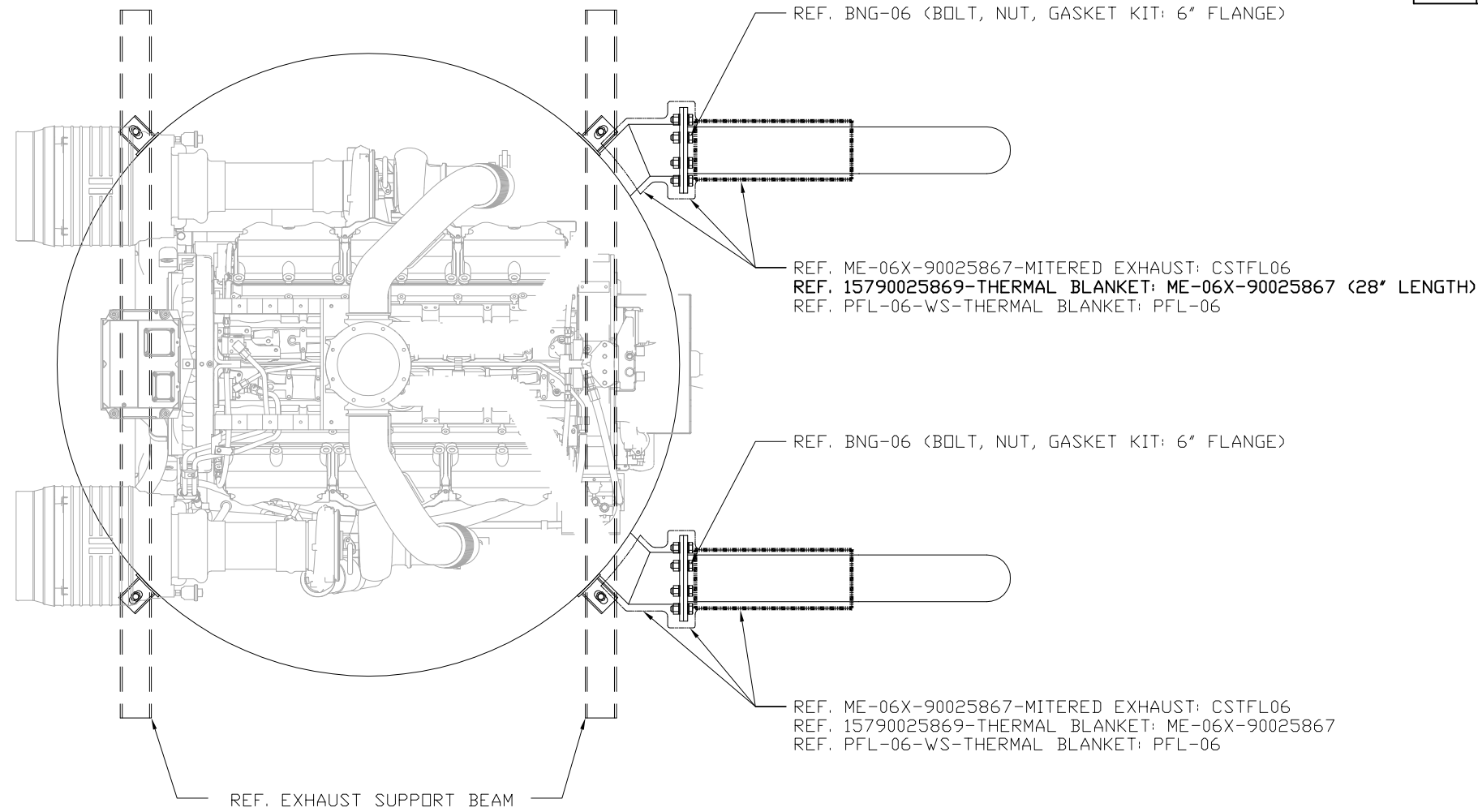


ITEM	QTY.	PART NO. & DESCRIPTION
1	1	APS1000 KIT (EM PROD. /PHILLIPS & TEMRO)
2	8	86C184-SPACER
3	4	8T-8924-BOLT-3/4"-10THD HEX HD.

ESTIMATED TOTAL WEIGHT = 1,630 LBS.



DATE BY		ALTORFER POWER SYSTEMS 6315 W. FAUBER RD. PHONE (309) 697-1234 BARTONVILLE, IL 61607 FAX (309) 282-7546		
				THIS DOCUMENT CONTAINS PROPRIETARY INFORMATION OF ALTORFER, INC. WITHOUT THE WRITTEN PERMISSION OF ALTORFER, INC., ANY COPYING OR OTHER USE EXCEPT THAT FOR WHICH IT WAS INTENDED IS PROHIBITED
CHANGE NOTICE	NO.	ALL DIMENSIONS IN INCHES UNLESS OTHERWISE SPECIFIED	FILE DF\81A	PROJECT REFERENCE APS1000A
		TOLERANCES: X.X ± 0.100 X.XX ± 0.060 X.XXX ± 0.005	THIRD ANGLE PROJECTION	SCALE/SHEET SIZE 1=10/D
		ANGULAR ± 1°		SHEET 1 OF 1
		TITLE	EXHAUST SILENCER MOUNTING GROUP	
2	1	DATE	JAM	QUOTE NUMBER -
		DATE	09-22-14	WORK ORDER NUMBER -
		TITLE	DRAWING NUMBER 81A505-00	