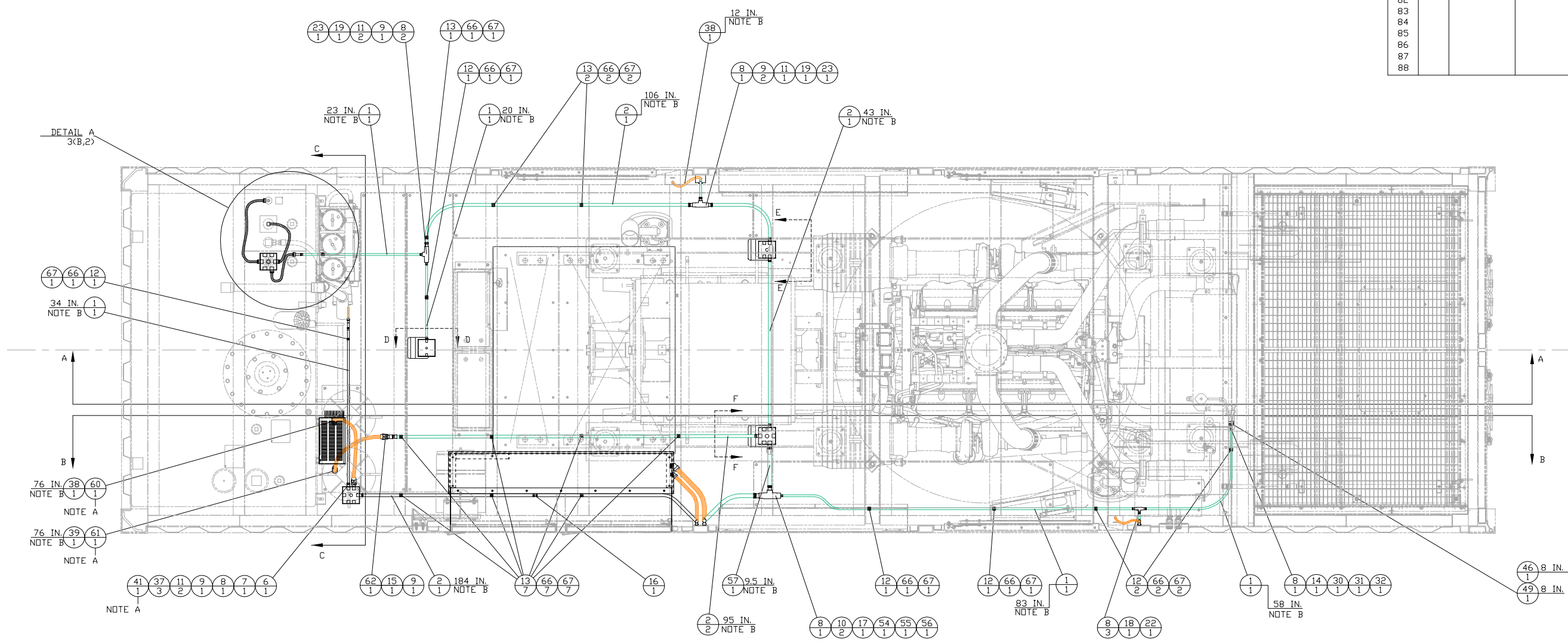


INCH 81A503A-00				PARTS LIST															
ITEM	QTY.	PART NO.	DESCRIPTION	ITEM	QTY.	PART NO.	DESCRIPTION	ITEM	QTY.	PART NO.	DESCRIPTION	ITEM	QTY.	PART NO.	DESCRIPTION	ITEM	QTY.	PART NO.	DESCRIPTION
1	80'	288-3867	CONDUIT 1/2"	16	1	323-2860	EMT COUPLING 3/4"	31	9	5N9071	COLLAR 1/2"	46	8'	EWL12P	LOOM (PLASTIC) 1/2"	61	1	336-6771	90° SEALTIGHT CONNECTOR - 3/4"
2	60'	288-3871	CONDUIT 3/4"	17	2	321-2948	REDUCER BUSHING 1"-1/2"	32	9	5N9073	CLIP 1/2"	47	3	201-3160	SPRING NUT 1/4"-20	62	1	334-7799	SEALTIGHT STRAIGHT CONNECTOR - 3/4"
3	1	158-8021	2x4 WEATHERPROOF BOX 1/2" HOLES 3 WAY	18	1	201-4325	TEE 1/2"	33	3	9X1439	TRACTOR LIGHT	48	3	112-8989	SPACER BLOCK	63	3	4L-6454	BOLT 3/8-16 X 1"
4	1	176-2902	4x4 WEATHERPROOF BOX 1/2" HOLES 3 WAY	19	2	201-4326	TEE 3/4"	34	1	179-1937	TIMER	49	8'	HST175-Y	HEAT SHRINK BLACK 3/4"	64	9	8T-4896	3/8" WASHER - HARD
5	1	323-2979	4x4 WEATHERPROOF BOX 1/2" HOLES 7 WAY	20	-	-----	-----	35	4	1S2294	CONDUIT BOOT	50	-	-----	-----	65	3	2K-4973	3/8" LOCK NUT
6	1	21H7S2-2	4x4 WEATHERPROOF BOX 3/4" HOLES 7 WAY	21	-	-----	-----	36	3	4P6599	1/2" SCREW TYPE BLANKS FOR W/P BOXES	51	3	323-2881	CONDUIT HANGER 1"	66	30	235-4451	BOLT - M6X1 X 16MM
7	5	324-9084	4x4 WEATHERPROOF BOX BLANK COVER	22	1	201-4328	TEE COVER 1/2"	37	5	252-7559	3/4" SCREW TYPE BLANKS FOR W/P BOXES	52	1	EGC100	GALVANIZED COUPLING 1"	67	30	243-5027	NUT - M6X1
8	14	321-3321	EMT BOX CONNECTOR 1/2"	23	2	201-4329	TEE COVER 3/4"	38	50'	205-6419	SEALTIGHT 1/2"	53	10'	252-7452	SEALTIGHT 1"	68	1	286-0177	BATTERY CHARGER
9	10	321-3322	EMT BOX CONNECTOR 3/4"	24	-	-----	-----	39	40'	249-0652	SEALTIGHT 3/4"	54	1	T100-A	TEE 1"	69	4	201-4323	CAP - UNISTRUT
10	4	321-3323	EMT BOX CONNECTOR 1"	25	-	-----	-----	40	5	334-7798	SEALTIGHT STRAIGHT CONNECTOR 1/2"	55	1	K100-A	TEE COVER 1"	70	4	201-3160	NUT - SPRING
11	6	201-4327	EMT REDUCER BUSHING 3/4"-1/2"	26	3	8T8908	BOLT 1/4"-20x1"	41	2	334-7801	45° SEALTIGHT CONNECTOR 1/2"	56	1	GK100-N	TEE GASKET 1"	71	1	86C169	COVER - BATTERY
12	11	323-2879	CONDUIT HANGER 1/2"	27	1	TP-7142	4x4 WEATHERPROOF BOX 1" HOLES 7 WAY	42	2	311-3046	45° SEALTIGHT CONNECTOR 3/4"	57	30'	326-4112	CONDUIT 1"	72	4	8T-8908	BOLT - 1/4-20
13	16	323-2880	CONDUIT HANGER 3/4"	28	-	-----	-----	43	2	252-7454	45° SEALTIGHT CONNECTOR 1"	58	1	321-2949	REDUCER BUSHING 1"-3/4"	73	4	8T-4205	WASHER - FLAT
14	4	201-4332	GALVANIZED COUPLING 1/2"	29	4	5271-0	1" SCREW TYPE BLANKS FOR W/P BOXES	44	1	5345-0	4x4 WEATHERPROOF BOX 3/4" HOLES 5 WAY	59	-	-----	-----	74	1	155-2271	PLUG KIT
15	2	336-6456	GALVANIZED COUPLING 3/4"	30	9	5N8943	ADAPTER 1/2"	45	-	-----	-----	60	1	334-7802	90° SEALTIGHT CONNECTOR - 1/2"	75	4	9G-3695	PLUG - SEALING
																76	3	8T-8730	CONNECTOR - PIN
																77	1	155-2260	PLUG KIT
																78			
																79			
																80			
																81			
																82			
																83			
																84			
																85			
																86			
																87			
																88			

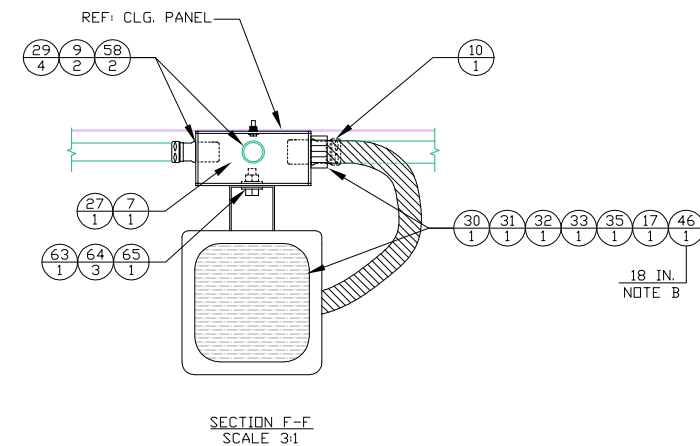
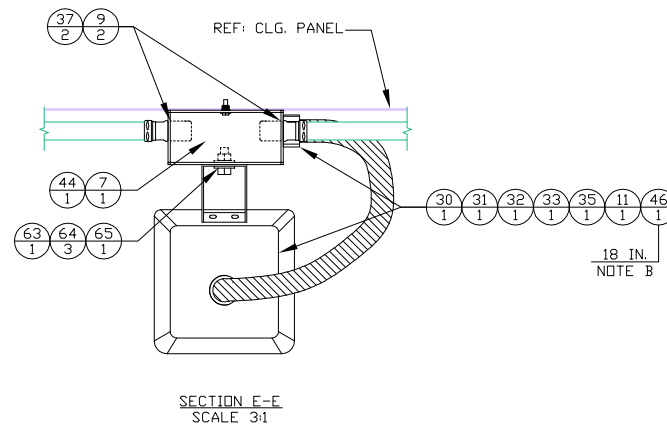
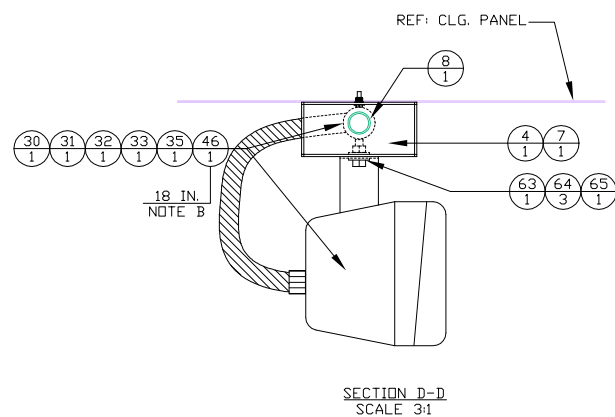
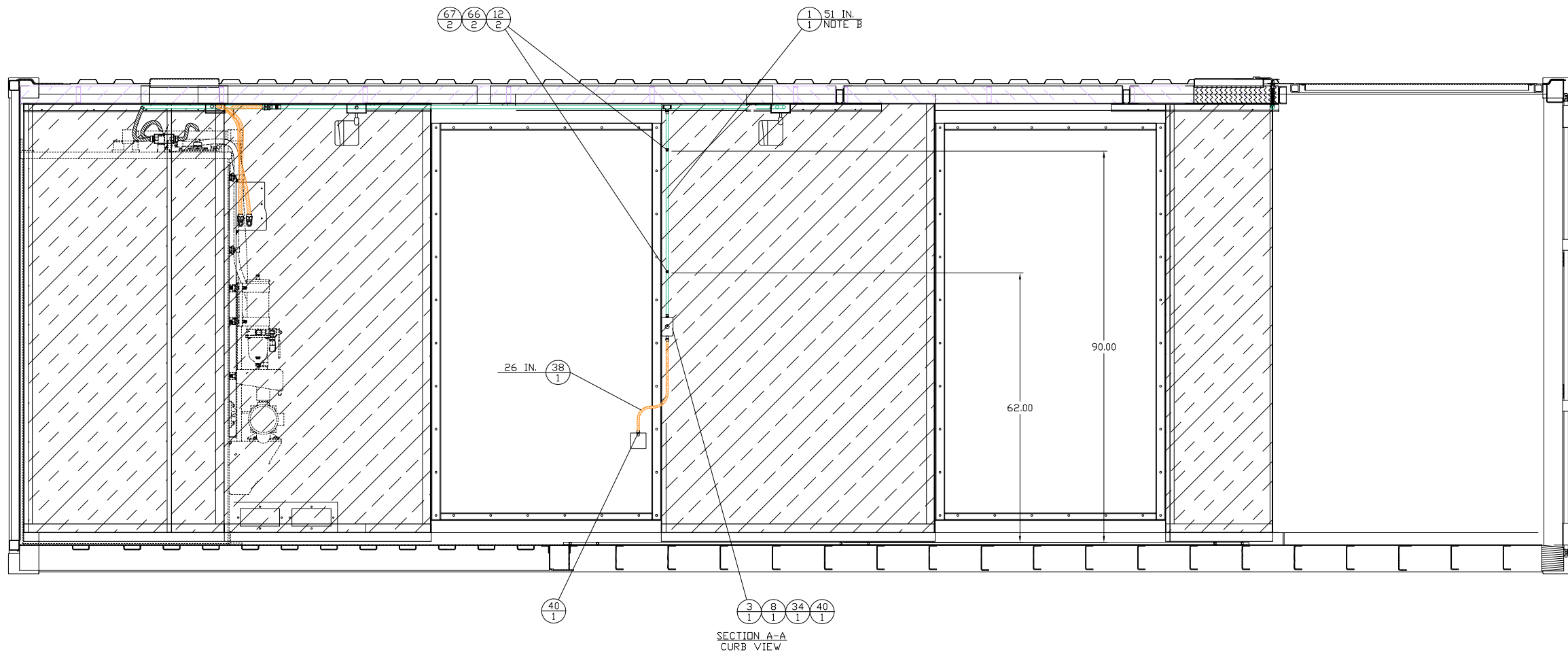


TOP VIEW

NOTE A: USE EXISTING KNOCK OUT HOLES ON BATTERY CHARGER QTY. (3)
 NOTE B: LENGTHS OF CONDUITS ARE APPROXIMATE & SUBJECT TO CHANGE. ITEM LENGTHS IN THE CONSIST REFLECT BULK MATERIAL.

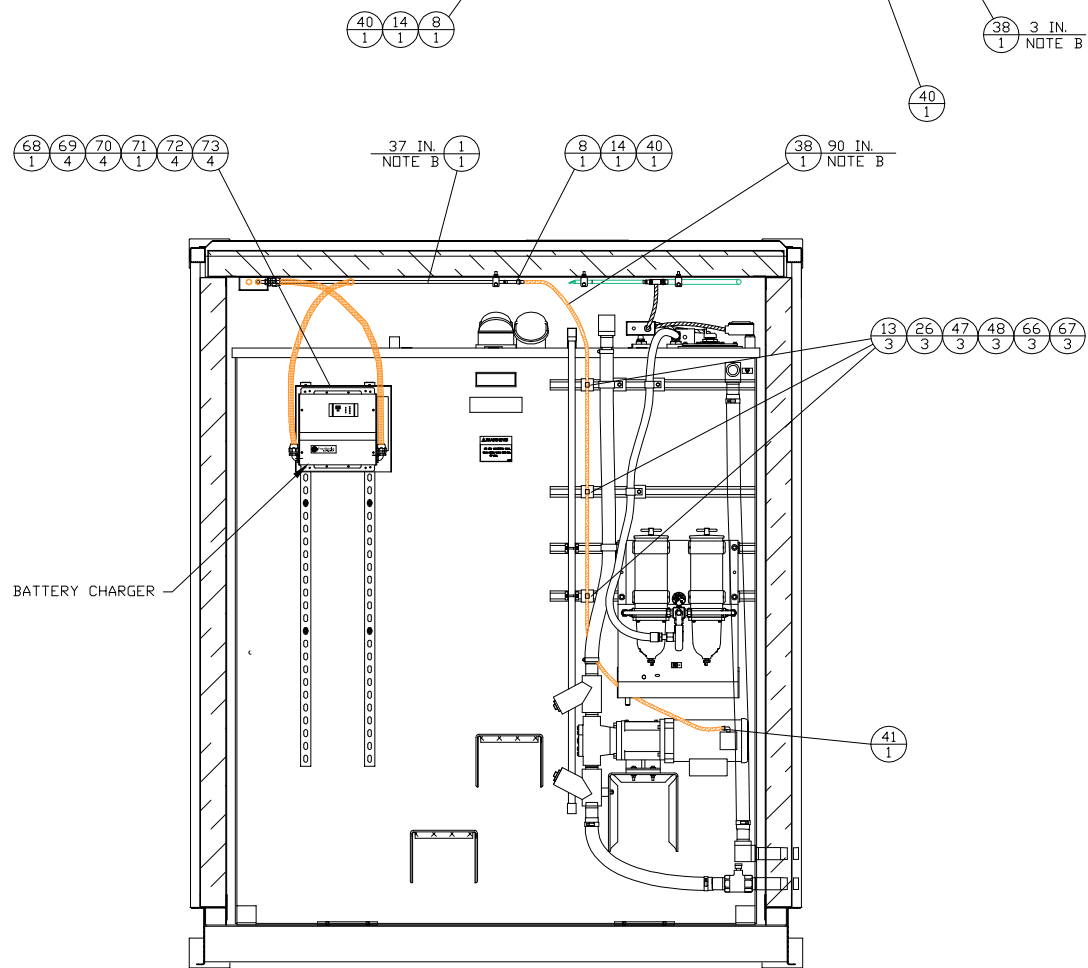
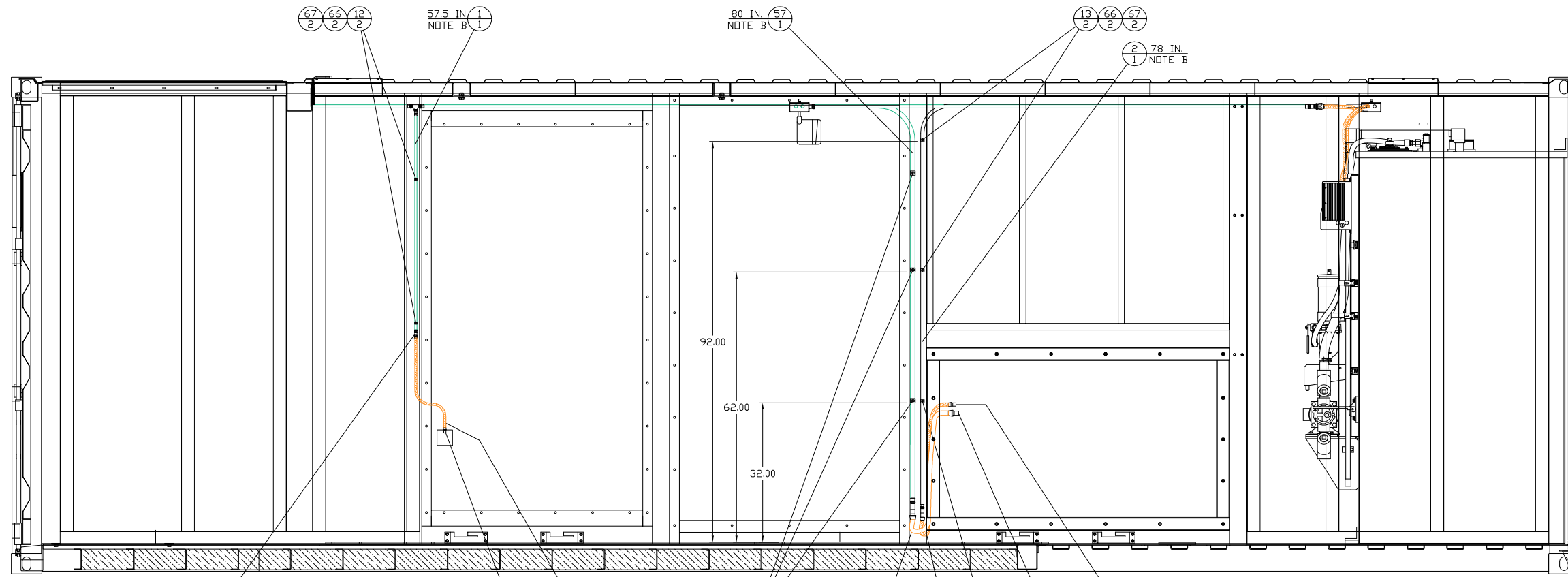
- HEATSHRINK
- LOOM
- NON-METALLIC FLEX
- AC/EMT (ELECTRICAL METAL TUBING)
- DC/EMT (ELECTRICAL METAL TUBING)

DATE BY:		ALTORFER		ALTORFER POWER SYSTEMS	
		6315 W. FAUBER RD.		PHONE (309) 697-1234	
		BARTONVILLE, IL 61607		FAX (309) 282-7546	
THIS DOCUMENT CONTAINS PROPRIETARY INFORMATION OF ALTORFER, INC. WITHOUT THE WRITTEN PERMISSION OF ALTORFER, INC., ANY COPYING OR OTHER USE EXCEPT THAT FOR WHICH IT WAS INTENDED IS PROHIBITED.					
CHANGE NOTICE	ALL DIMENSIONS IN INCHES UNLESS OTHERWISE SPECIFIED	FILE	DF\81A	PROJECT REFERENCE	
	TOLERANCES: X.X ± 0.100 X.XX ± 0.050 X.XXX ± 0.005	THIRD ANGLE PROJECTION	SCALE/SHEET SIZE	1=15/D	QUOTE NUMBER
	ANGULAR ± 1'		SHEET	1 OF 3	DATE
	TITLE	CONDUIT LAYOUT (AC/DC)		DRAWN BY	D. RICHARDSON
				DATE	9/8/14
				WORK ORDER NUMBER	-
				DRAWING NUMBER	81A503A-00

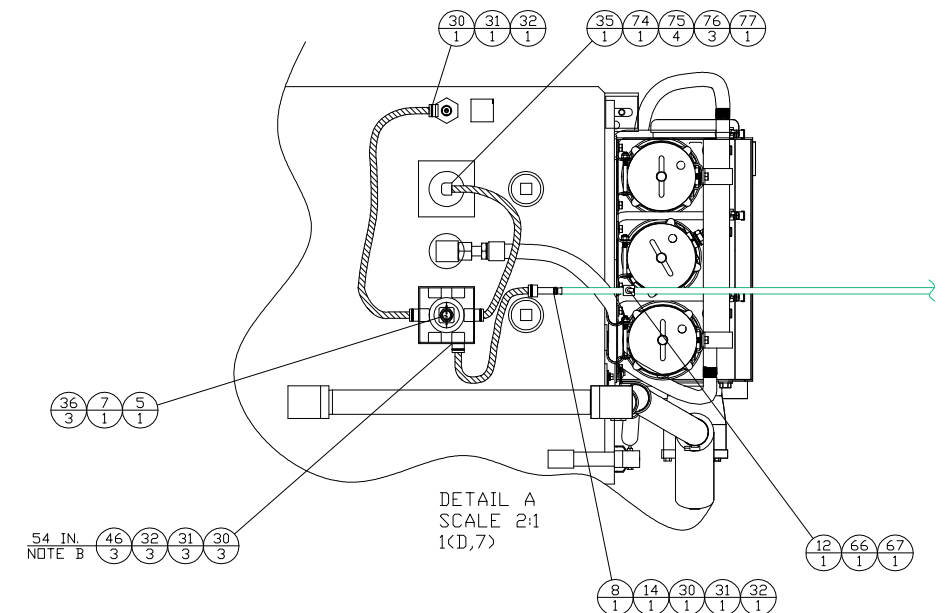


NOTE A: USE EXISTING KNOCK OUT HOLES ON BATTERY CHARGER QTY. (3)
 NOTE B: LENGTHS OF CONDUITS ARE APPROXIMATE & SUBJECT TO CHANGE.
 ITEM LENGTHS IN THE CONSIST REFLECT BULK MATERIAL.

DATE BY		ALTORFER		ALTORFER POWER SYSTEMS	
		6315 W. FAUBER RD. PHONE (309) 697-1234 BARTONVILLE, IL 61607 FAX (309) 282-7546			
THIS DOCUMENT CONTAINS PROPRIETARY INFORMATION OF ALTORFER, INC. WITHOUT THE WRITTEN PERMISSION OF ALTORFER, INC., ANY COPYING OR OTHER USE EXCEPT THAT FOR WHICH IT WAS INTENDED IS PROHIBITED.		FILE		PROJECT REFERENCE	
ALL DIMENSIONS IN INCHES UNLESS OTHERWISE SPECIFIED		DF\81A		APS1000A	
TOLERANCES: XX ± 0.100 XXX ± 0.050 XXXX ± 0.005		SCALE/SHEET SIZE		DRAWN BY	
THIRD ANGLE PROJECTION		1=15/D		D. RICHARDSON	
ANGULAR ± 1'		SHEET		DATE	
		2 OF 3		9/8/14	
TITLE				WORK ORDER NUMBER	
				DRAWING NUMBER	
				81A503B-00	



SECTION B-B STREET VIEW



NOTE A: USE EXISTING KNOCK OUT HOLES ON BATTERY CHARGER QTY. (3)
 NOTE B: LENGTHS OF CONDUITS ARE APPROXIMATE & SUBJECT TO CHANGE. ITEM LENGTHS IN THE CONSIST REFLECT BULK MATERIAL.

DATE BY		ALTORFER		ALTORFER POWER SYSTEMS	
		6315 W. FAUBER RD. BARTONVILLE, IL 61807		PHONE (309) 697-1234 FAX (309) 282-7546	
THIS DOCUMENT CONTAINS PROPRIETARY INFORMATION OF ALTORFER, INC. WITHOUT THE WRITTEN PERMISSION OF ALTORFER, INC., ANY COPYING OR OTHER USE EXCEPT THAT FOR WHICH IT WAS INTENDED IS PROHIBITED		FILE		PROJECT REFERENCE	
ALL DIMENSIONS IN INCHES UNLESS OTHERWISE SPECIFIED		DF\81A		APS1000A	
TOLERANCES:	THIRD ANGLE PROJECTION	SCALE/SHEET SIZE	DRAWN BY	QUOTE NUMBER	
X.X ± 0.100		1=15/D	D. RICHARDSON	-	
X.XX ± 0.050		SHEET	DATE	WORK ORDER NUMBER	
X.XXX ± 0.005		3 OF 3	9/8/14	-	
ANGULAR ± 1'				DRAWING NUMBER	
TITLE				81A503C-00	
CONDUIT LAYOUT (AC/DC)					