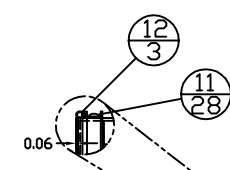
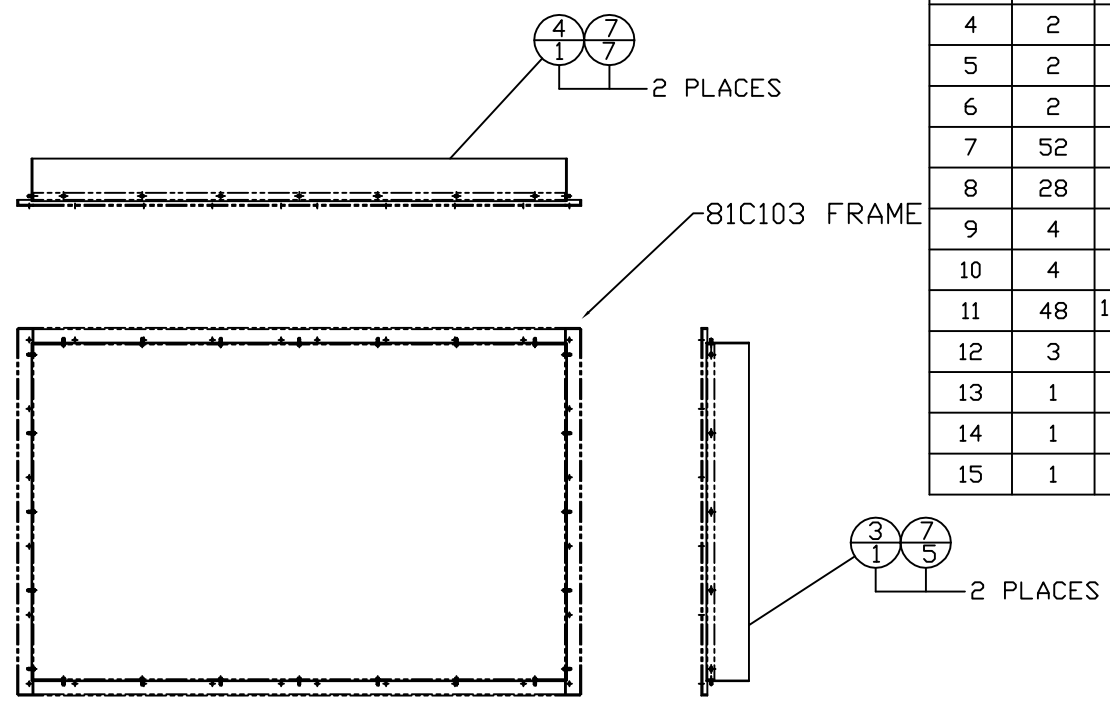
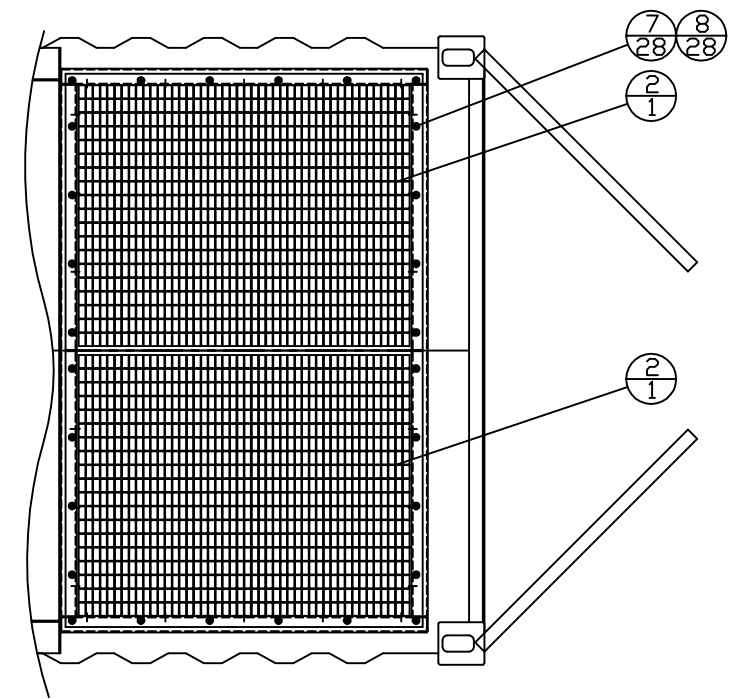
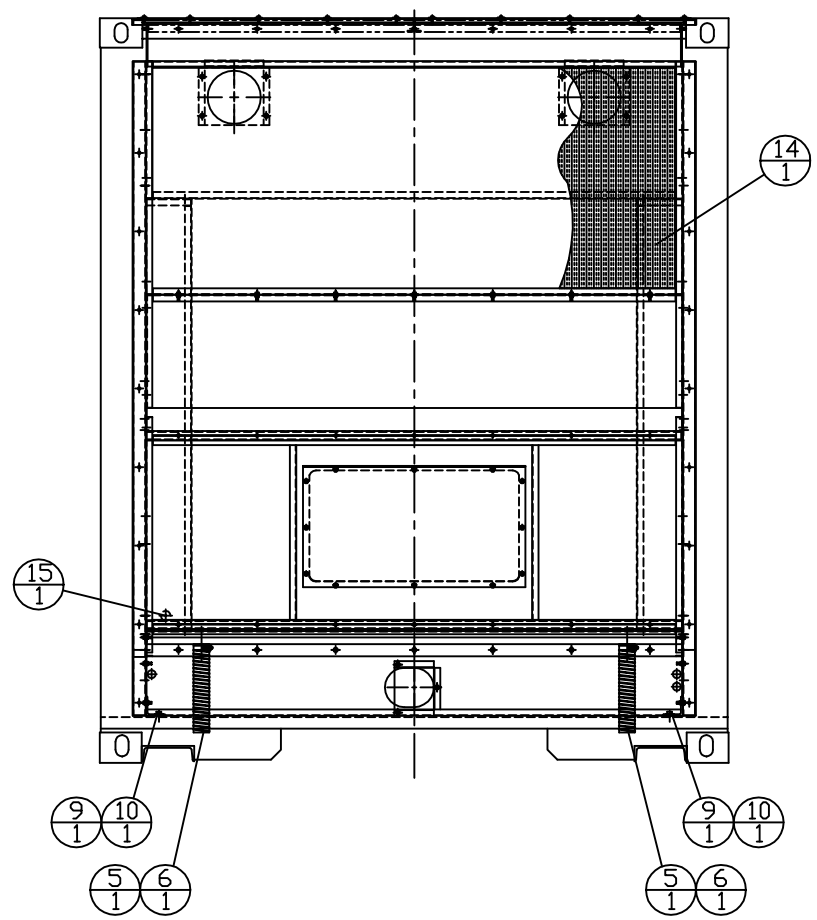
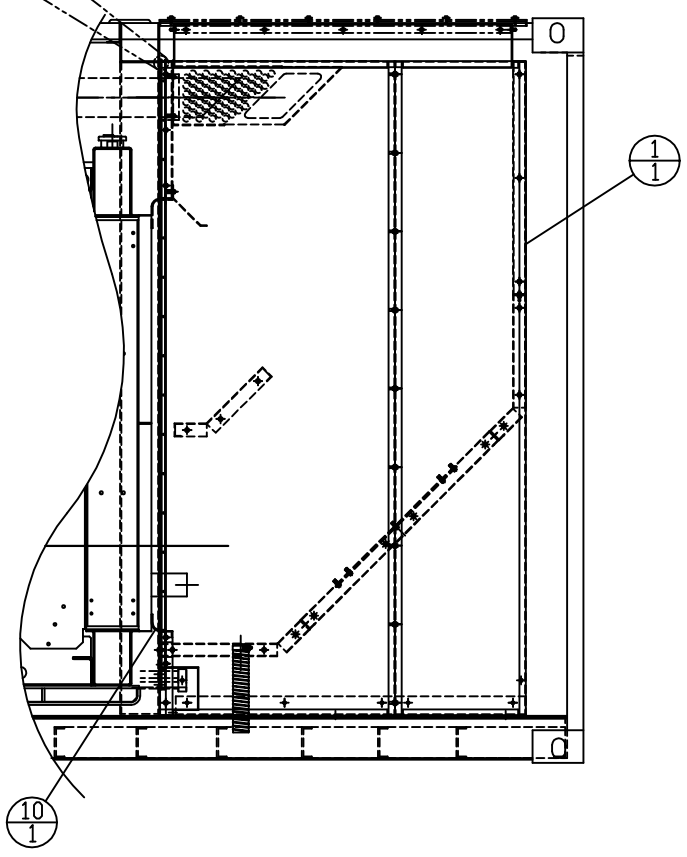


ITEM	QTY.	DESCRIPTION
1	1	80C256 DISCHARGE DIVERTER ASSEMBLY
2	2	81C152 SCREEN
3	2	81C150 TRANSITION AS. SH
4	2	81C148 TRANSITION AS. LG
5	2	5499K243 DUCT HOSE 2-1/4"ID
6	2	36H HOSE CLAMP
7	52	54812 BOLT - FLANGE 1/4-20x3/4
8	28	N1125257 WASHER - NEOPRENE 1/4"
9	4	???? BOLT - LAG 1/2x2
10	4	505 WASHER - FLAT 1/2"
11	48	10412-05173 PAN SQ-DR TEK SCREW
12	3	1114A3 DOOR FRAME WEATHERSTRIPPING
13	1	80C305 RADIATOR DUCT RUBBER
14	1	80F203 DISCHARGE DIVERTER INSULATION GP
15	1	3L1979 BUTTON/PLUG 1-1/2"



PARTIAL - CONTAINER TOP



<p>ALTORFER</p> <p>6315 W. FAUBER RD. BARTONVILLE, IL 61607</p> <p>PHONE (309) 697-1234 FAX (309) 282-7546</p>		<p>ALTORFER POWER SYSTEMS</p>		
		<p>THIS DOCUMENT CONTAINS PROPRIETARY INFORMATION OF ALTORFER, INC. WITHOUT THE WRITTEN PERMISSION OF ALTORFER, INC., ANY COPYING OR OTHER USE EXCEPT THAT FOR WHICH IT WAS INTENDED IS PROHIBITED</p>		
<p>CHANGE NOTICE</p> <p>DATE BY</p>	<p>ALL DIMENSIONS IN INCHES UNLESS OTHERWISE SPECIFIED</p>	<p>FILE</p> <p>DF\80A</p>	<p>PROJECT REFERENCE</p> <p>APS800B C27 POWER MODULE</p>	
	<p>TOLERANCES:</p> <p>X.X ± 0.100</p> <p>X.XX ± 0.060</p> <p>X.XXX ± 0.005</p>	<p>THIRD ANGLE PROJECTION</p>	<p>SCALE/SHEET SIZE</p> <p>1=15/D</p>	<p>DRAWN BY</p> <p>D. RICHARDSON</p>
	<p>ANGULAR ± 1°</p>	<p>SHEET</p> <p>1 OF 1</p>	<p>DATE</p> <p>10/3/08</p>	<p>QUOTE NUMBER</p>
	<p>TITLE</p> <p>DISCHARGE DIVERTER GROUP DIVERTER INSTALLATION</p>	<p>DRAWING NUMBER</p> <p>80A836</p>	<p>WORK ORDER NUMBER</p>	<p>DATE</p>