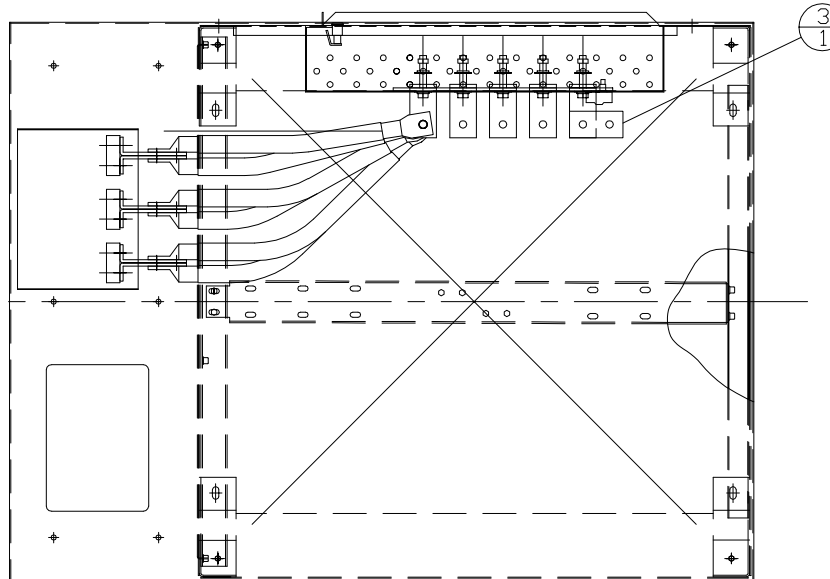
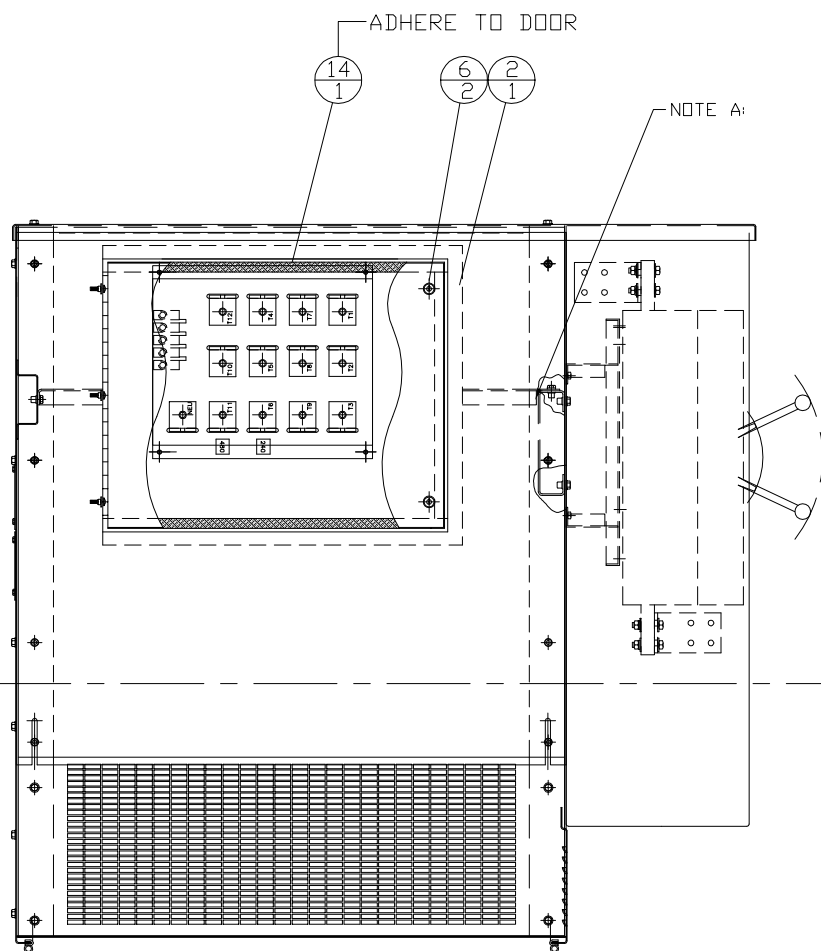


3D CABLE LENGTHS

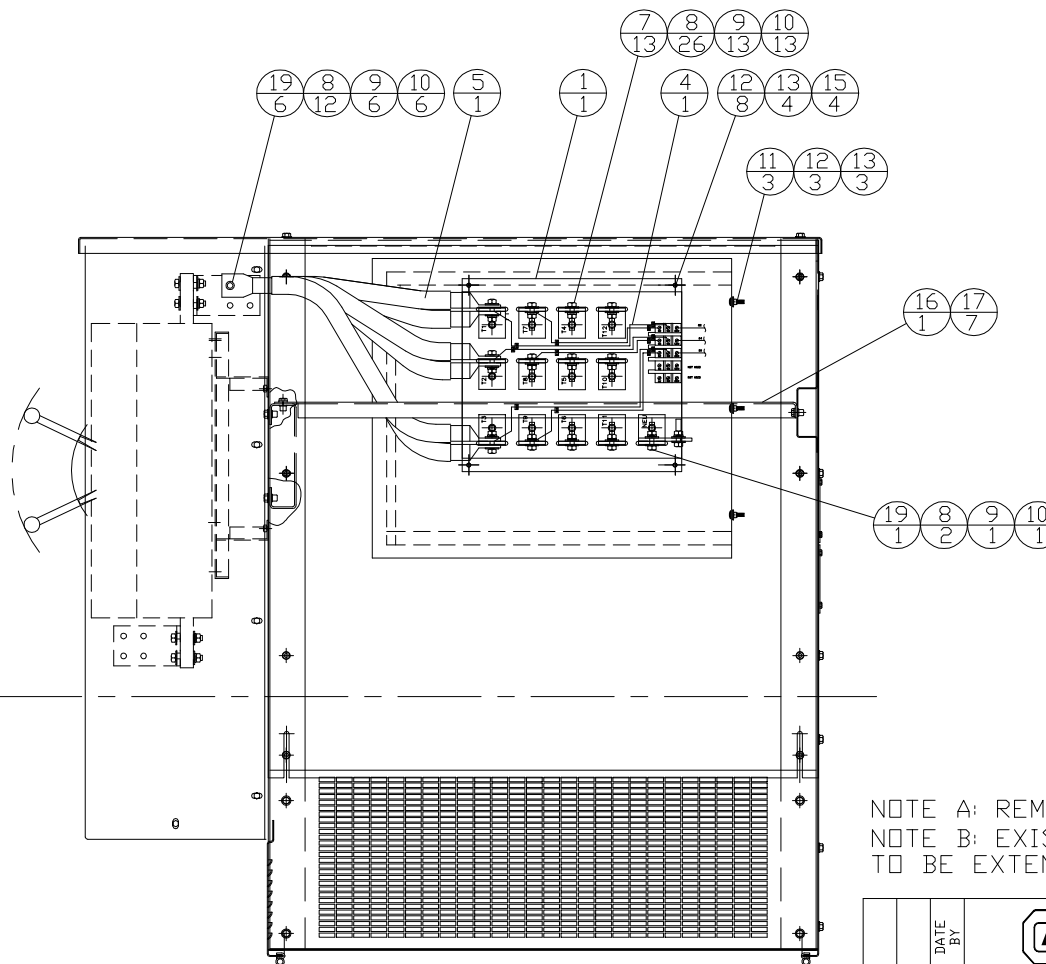


TOP VIEW

ITEM	QTY.	DESCRIPTION
1	1	80E411 CHANGE-OVER BOARD ASS'Y
2	1	80E401-00 CHANGE OVER BOARD MOUNT ASS'Y
3	1	80E408-00 DELTA-WYE NEUTRAL BAR
4	1	80E407-00 DELTA/WYE BOARD SENSING HARNESS
5	1	80E406-00 CABLE GROUP - BOARD TO CB
6	2	ACLJIC LOCK KIT
7	13	65035 BOLT 3/8-16x1-3/4" Lg
8	40	503 WASHER - FLAT 3/8"
9	20	530 WASHER - LOCK 3/8"
10	20	102 NUT 3/8-16
11	3	51586 SCREW - PANHEAD 1/4-20 SS
12	11	501 WASHER - FLAT 1/4"
13	7	301 NUT 1/4-20 NYLON
14	5.6FT	AS990 WEATHERSTRIP
15	4	65002 BOLT 1/4-20x1" Lg
16	1	RMR18 RUBBER 1/8" 36x10
17	7	T250RBLK TY-RAP
18	100"	EWL12P LOOM (PLASTIC) 1/2"
19	7	65036 BOLT 3/8-16x2" Lg



LEFT SIDE VIEW



RIGHT SIDE VIEW

NOTE A: REMOVE EXISTING CAT NEUTRAL BAR
 NOTE B: EXISTING CAT NEUTRAL SENSING WIRE TO BE EXTENDED 100" , LAND ON C/O BOARD, ADD ITEM 18

<p>ALTORFER</p> <p>6315 W. FAUBER RD. BARTONVILLE, IL 61607</p> <p>PHONE (309) 697-1234 FAX (309) 282-7546</p>		<p>THIS DOCUMENT CONTAINS PROPRIETARY INFORMATION OF ALTORFER, INC. WITHOUT THE WRITTEN PERMISSION OF ALTORFER, INC., ANY COPYING OR OTHER USE EXCEPT THAT FOR WHICH IT WAS INTENDED IS PROHIBITED</p>	
		<p>ALL DIMENSIONS IN INCHES UNLESS OTHERWISE SPECIFIED</p> <p>TOLERANCES: X.X ± 0.100 X.XX ± 0.060 X.XXX ± 0.005</p>	<p>THIRD ANGLE PROJECTION</p>
<p>CHANGE NOTICE</p>	<p>DATE BY</p>	<p>TITLE CHANGE OVER BOARD GROUP INSTALLATION LAYOUT</p>	<p>QUOTE NUMBER</p> <p>WORK ORDER NUMBER</p> <p>DRAWING NUMBER 80A817</p>