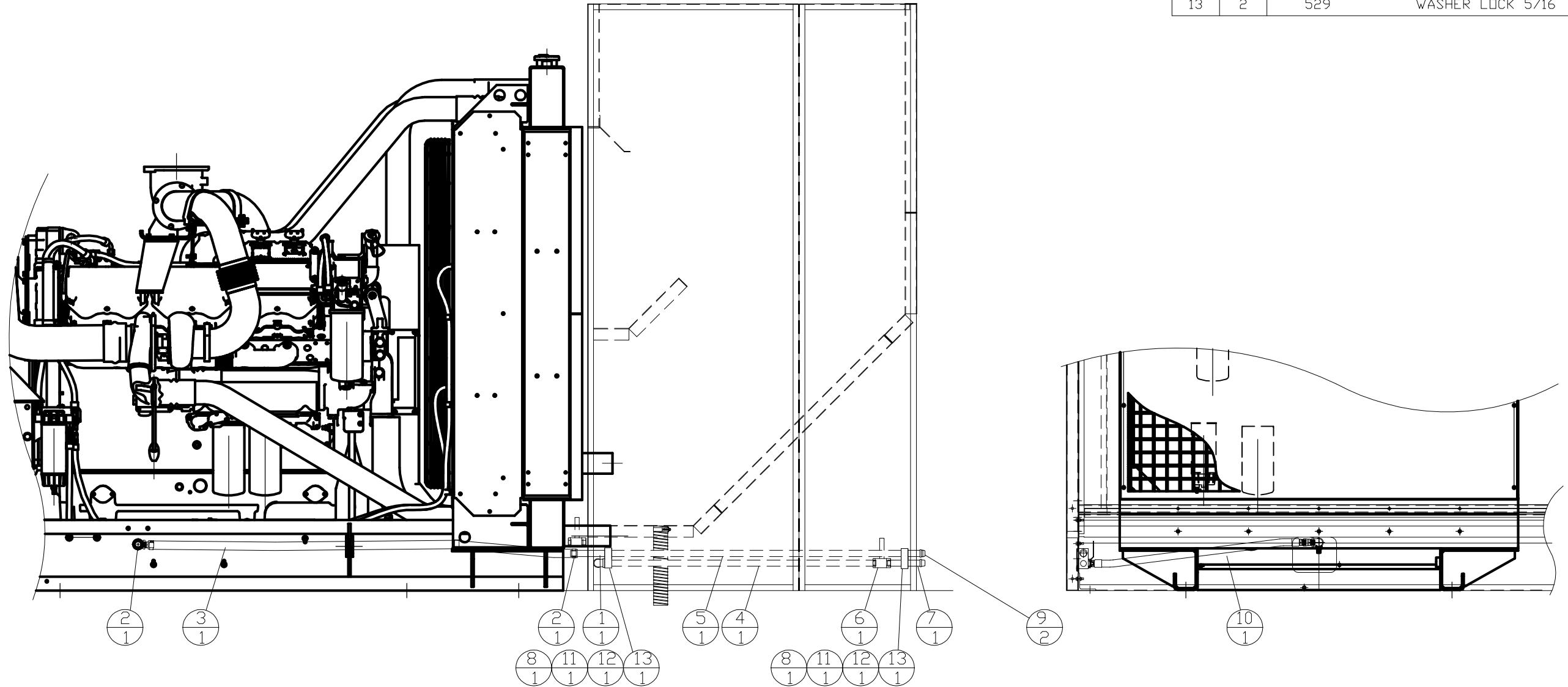


ITEM	QTY.	DESCRIPTION
1	2	8604 ELBOW 90° 3/4
2	2	2S3440 CLAMP - HOSE
3	1	80B208 HOSE -1"
4	1	80B209 PIPE - BLACK 3/4
5	1	80B210 PIPE - BLACK 3/4
6	1	PBBV34 VALVE (BALL) 3/4
7	1	81928 NIPPLE - 3/4x6
8	2	3252T12 CLAMP - VIBRATION
9	2	8656 CAP (PIPE) 3/4
10	1	81C186 HOSE ASSEMBLY
11	2	65023 BOLT 5/16-18x2-1/2
12	2	502 WASHER FLAT 5/16
13	2	529 WASHER LOCK 5/16



9/10/07 DKR	DATE	<b>ALTORFER</b>		<b>ALTORFER POWER SYSTEMS</b>		
	BY	6315 W. FAUBER RD. BARTONVILLE, IL 61607		PHONE (309) 697-1234 FAX (309) 282-7546		
REORGANIZE GROUP	CHANGE NOTICE	THIS DOCUMENT CONTAINS PROPRIETARY INFORMATION OF ALTORFER, INC. WITHOUT THE WRITTEN PERMISSION OF ALTORFER, INC., ANY COPYING OR OTHER USE EXCEPT THAT FOR WHICH IT WAS INTENDED IS PROHIBITED				
		ALL DIMENSIONS IN INCHES UNLESS OTHERWISE SPECIFIED	FILE DF\80A	PROJECT REFERENCE APS800A C27 POWER MODULE		
		TOLERANCES: X.X ± 0.100 X.XX ± 0.060 X.XXX ± 0.005	THIRD ANGLE PROJECTION	SCALE/SHEET SIZE 1=10/D	DRAWN BY D. RICHARDSON	QUOTE NUMBER
		ANGULAR ± 1°		SHEET 1 OF 1	DATE 8/15/06	WORK ORDER NUMBER
2	1	TITLE OIL/WATER DRAIN GROUP ASSEMBLY DETAIL			DRAWING NUMBER 80A810-01	