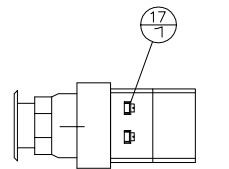
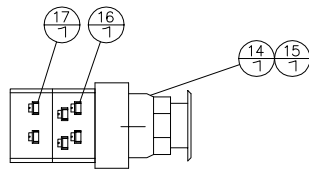


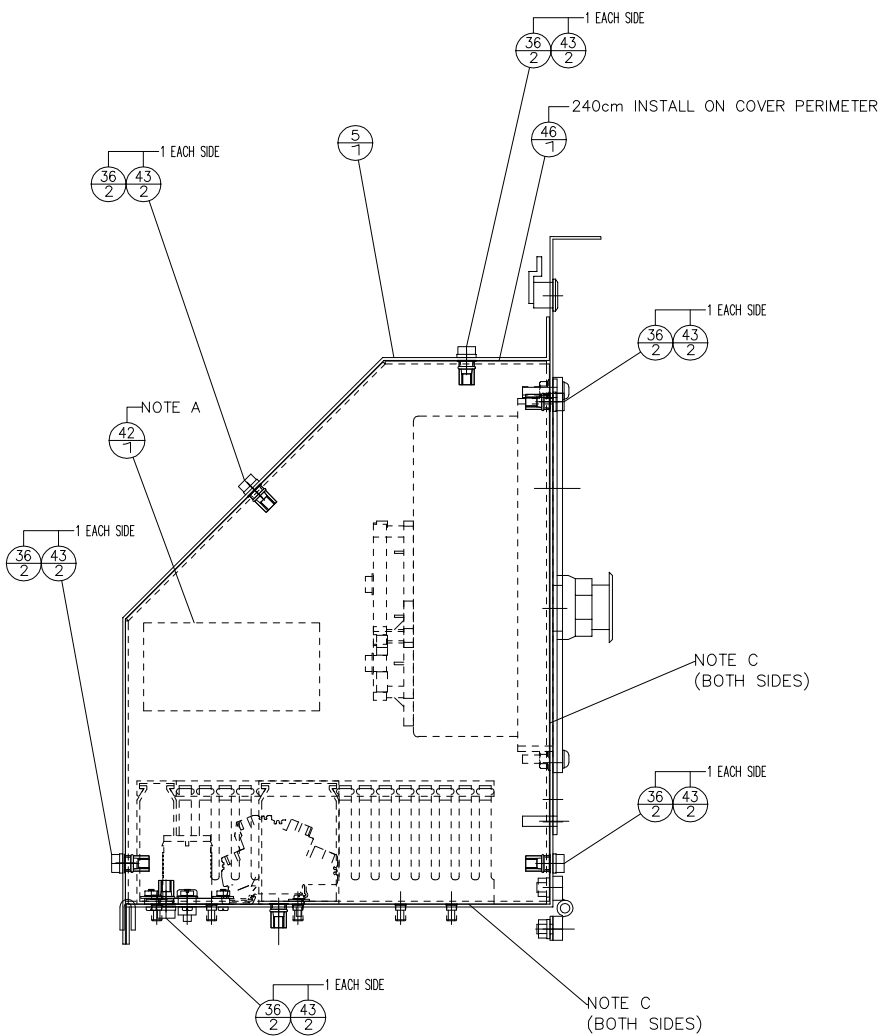
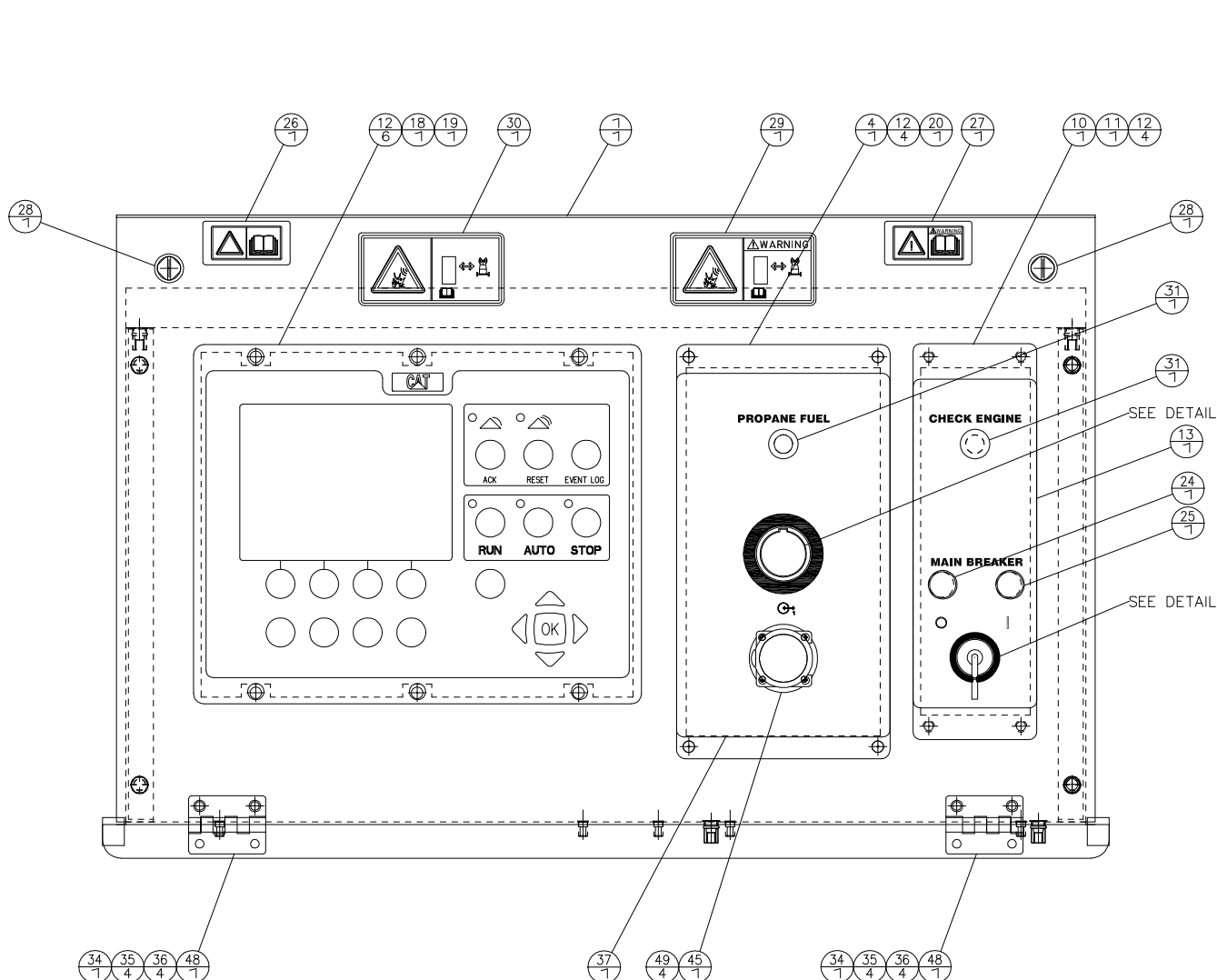
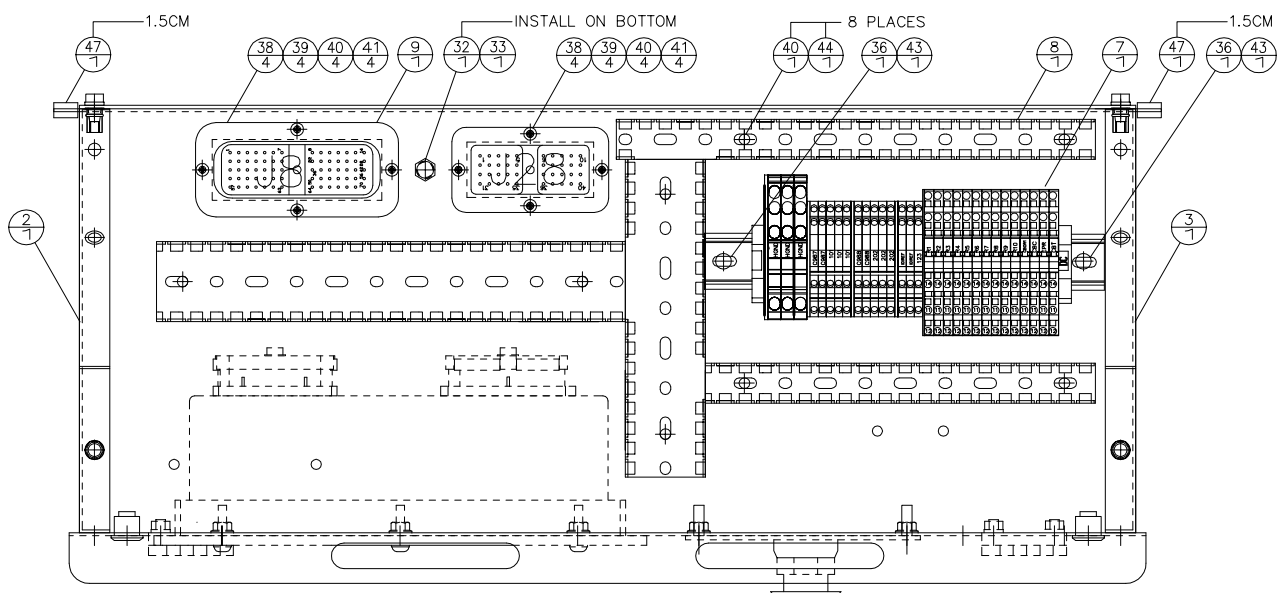
CBS	CBCL	CBOL	GND	JR	J28	TS2
GSC	LPSL	ESPB	CEL	PSL		



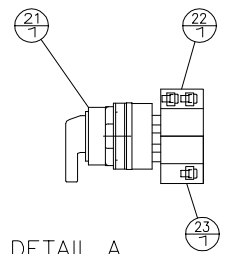
DETAIL B
RIGHT HAND SIDE



DETAIL B
LEFT HAND SIDE



NO	ITEM	QTY	MEAS UNIT	CAT PART NO.	ALTORFER PART NO.	NAME
PARTS LIST						
1	1			68E302		PANEL AS. - BOX
2	1			68E397		PANEL AS. - LEFT SIDE
3	1			68E398		PANEL AS. - RIGHT SIDE
4	1			68E305		PLATE - INSTRUMENT
5	1			68E303		PANEL AS. - COVER
6	1			68E307		FILM - IDENT
7	1			71E132		BLOCK AS.
8	1			68E399		WIRE DUCT GP
9	1			71E131		WIRING GP. - CONTROL
10	1			444-1223	68E112	PLATE AS.
11	1			7C-2954		GASKET - MODULE
12	14			243-5027		NUT - M6X1
13	1			444-1225	68E114	FILM - INFORMATION
14	1			109-6507		SWITCH - OPERATOR
15	1			124-3176		COVER
16	1			111-1325		BLOCK - CONTACT
17	2			111-1324		BLOCK - CONTACT
18	1			450-9619		CONTROL GP -B
19	1			103-6272		SEAL - CONTROL
20	1			244-9613		GASKET - ALARM
21	1			444-1226	9001-KS702B	SWITCH - OPERATOR
22	1				9001-KA-1	BLOCK - CONTACT
23	1				9001-KA-2	BLOCK - CONTACT
24	1			337-5438		LAMP AS. - INDICATOR
25	1			337-5437		LAMP AS. - INDICATOR
26	1			222-7945		FILM-WARNING
27	1			228-3581		FILM - WARN
28	2			125-0171		LOCK AS.
29	1			230-1340		FILM - WARN LINK
30	1			230-1341		FILM - WARN LINK
31	2			250-2298		LAMP - AMBER
32	1			211-0089		NUT - HEX FLANGE
33	1			4B-1256		SCREW - MACHINE
34	2			169-4481		HINGE AS.
35	8			5C-2890		NUT-HEX M6X1
36	22			9X-8256		WASHER
37	1				68E330	FILM - IDENTIFICATION
38	8			4B-2041		NUT
39	8			9X-6259		SCREW - MACHINE
40	16			4B-4274		WASHER - HARD
41	8			3L-8187		LOCKWASHER #6
42	1			9Y-9771		FILM - IDENTIFICATION
43	14			8T-4138		BOLT M6X1-20 Lg
44	8			293-2033		SCREW-MACHINE M4x0.7-10Lg
45	1			132-8488		NUT - RING #4-40
46	240	CM		244-9631		SEAL - BULK
47	3	CM		3E-6600		SEAL - BULK
48	2				68E426	SPACER - HINGE
49	4			293-2033		SCREW-MACHINE #4-40



DETAIL A
TOP MOUNTED ITEM 22 OPERATES
WHEN KNOB IS TURNED COUNTER-CLOCKWISE
BOTTOM MOUNTED ITEM 23 OPERATES
WHEN KNOB IS TURNED CLOCKWISE
(CBS)

FOR USE WITH:
APS470G
APS290G
APS230G

NOTE A: PLACE FILM ON INTERIOR SURFACE OF SIDE COVER
NOTE C: CLEAR SILICONE SEALANT REQUIRED IN EXTERIOR SEAMS AS MARKED
NOTE D: THIS PANEL AR. IS A DERIVATIVE OF ALTORFER P/N 68E301

REFERENCE CAT DWG:

		ALTORFER POWER SYSTEMS 6315 W. FAUBER RD. PHONE (309) 697-1234 BARTONVILLE, IL 61607 FAX (309) 262-7546	
THIS DOCUMENT CONTAINS PROPRIETARY INFORMATION OF ALTORFER, INC. WITHOUT THE WRITTEN PERMISSION OF ALTORFER, INC., ANY COPYING OR OTHER USE EXCEPT THAT FOR WHICH IT WAS INTENDED IS PROHIBITED.			
CHANGE NOTICE ALL DIMENSIONS IN INCHES UNLESS OTHERWISE SPECIFIED TOLERANCES: X.X ± 0.100 X.XX ± 0.060 X.XXX ± 0.005 ANGULAR ± 1°	FILE DF/71E	PROJECT REFERENCE APS GAS PRODUCT	
	SCALE/SHEET SIZE 1=60/D	DRAWN BY D. RICHARDSON	QUOTE NUMBER
	SHEET 1 OF 1	DATE 12/30/15	WORK ORDER NUMBER
	TITLE PANEL AR. - ELEC		DRAWING NUMBER 71E130