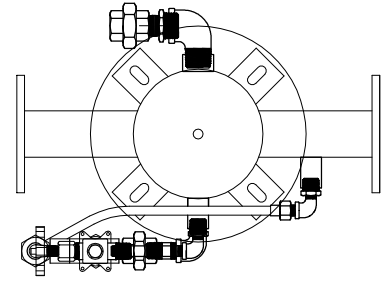
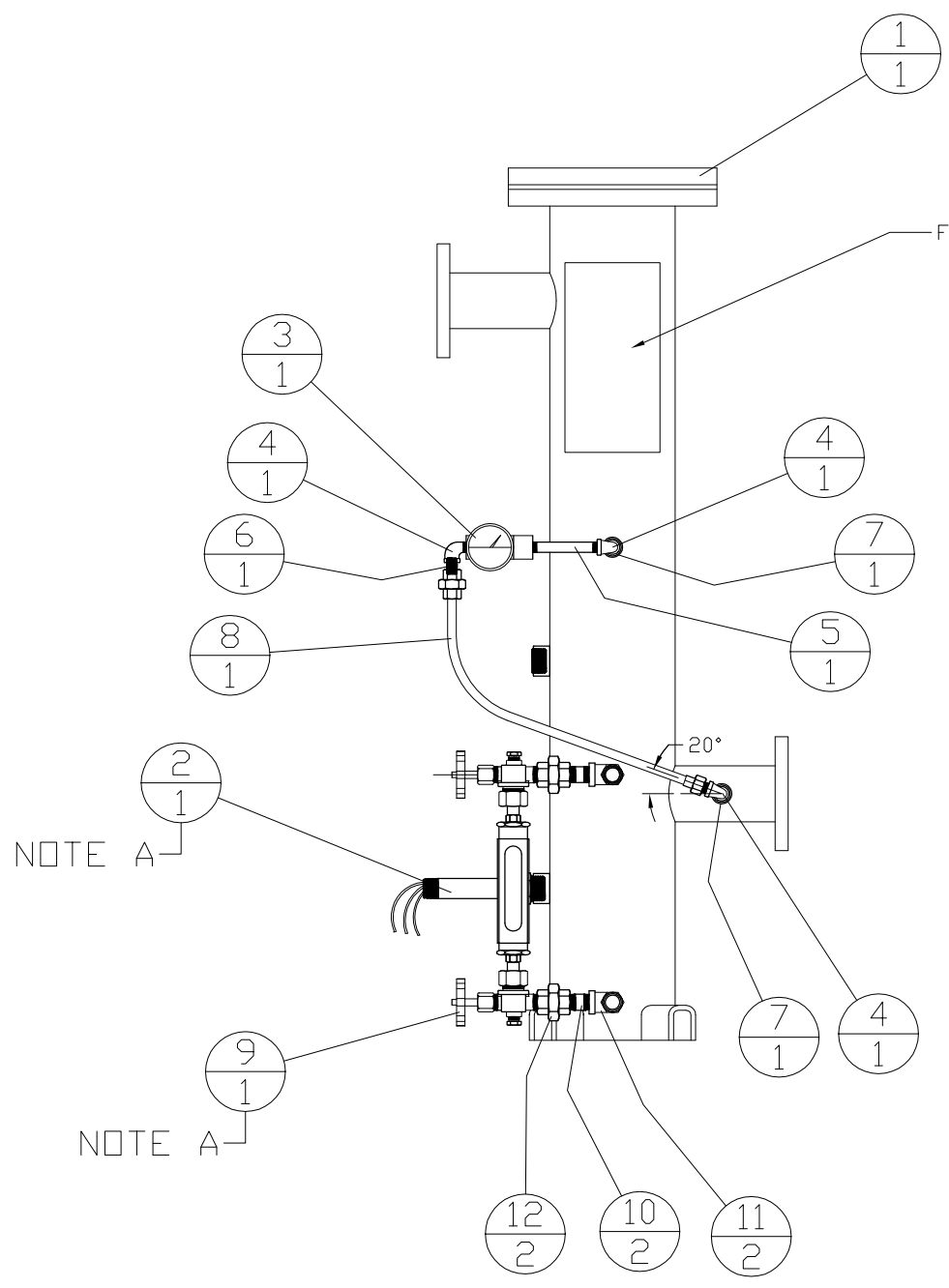


INCH 71C137



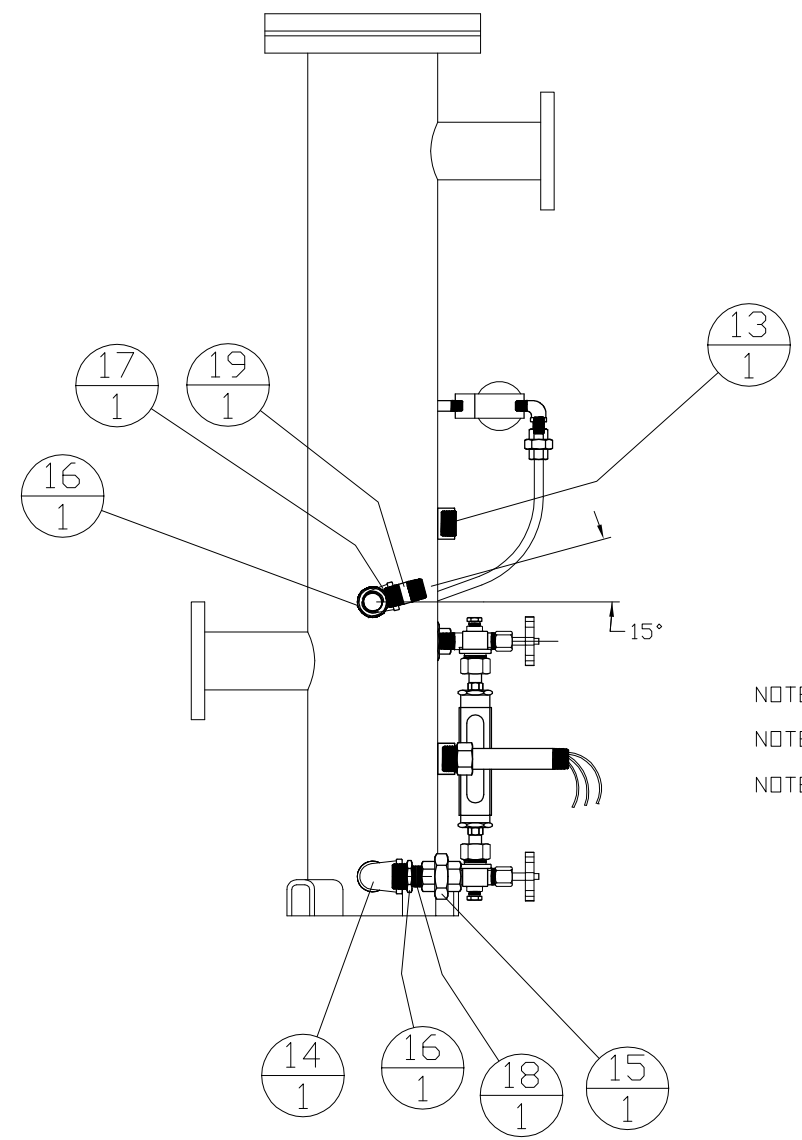
ITEM	QTY.	PART No.	DESCRIPTION
1	1	01-102915	FILTER-COALESCEING SERIES 89
2	1	4909K13	SWITCH-EXPLSN PROOF LIQUID LEVEL
3	1	4028K1	GAUGE-DIFFERENTIAL PRESSURE 0-15
4	3	44605K132	ELBDW-STREET 1/4 NPT
5	1	44615K462	NIPPLE-1/4 NPT x 4.00 Lg
6	1	44615K412	NIPPLE-1/4 NPT CLOSE
7	2	44605K245	BUSHING-REDUCING 1/2x1/4 NPT
8	1	5676T72	HOSE AS.-1/4 NPTF TO MALE 20.00 Lg
9	1	TE-12T	GAUGE AS-SIGHT 12.00 CC
10	2	44615K434	NIPPLE-1/2 NPT x 2.00 Lg
11	2	44605K134	ELBDW-STREET 1/2 NPT
12	2	44605K194	UNION-1/2 NPTF
13	1	44605K677	PLUG-SOCKET 1.0 NPT
14	1	44605K136	ELBDW-STREET 1.00 NPT
15	1	44605K195	UNION-3/4 NPTF
16	2	44605K369	BUSHING-REDICING 1.0x3/4 NPT
17	1	44605K115	ELBDW-STREET 3/4 NPT
18	1	44615K425	NIPPLE-3/4 NPT x 1.50 Lg
19	1	44615K435	NIPPLE-3/4 NPT x 2.00 Lg



NOTE A

NOTE A

FILTER NAME PLATE



- NOTE A: SEE SUPPLIER INSTALLATION INSTRUCTIONS
- NOTE: SEAL ALL THREADED PIPE JOINTS WITH COMPLIANT NATURAL GAS SEALANT
- NOTE: PAINT ALL BLACK PIPE FITTINGS AND FILTER HOUSING CAT HIGH GLOSS BLACK. NO PAINT ON FLANGE FACES, EXPOSED THREADS, HOSE ASSEMBLY, NAME PLATE, LEVEL SWITCH AND GAUGE ASSEMBLIES.

DATE BY				ALTORFER POWER SYSTEMS 6315 W. FAUBER RD. PHONE (309) 697-1234 BARTONVILLE, IL 61807 FAX (309) 282-7546	
				THIS DOCUMENT CONTAINS PROPRIETARY INFORMATION OF ALTORFER, INC. WITHOUT THE WRITTEN PERMISSION OF ALTORFER, INC., ANY COPYING OR OTHER USE EXCEPT THAT FOR WHICH IT WAS INTENDED IS PROHIBITED	
CHANGE NOTICE	ALL DIMENSIONS IN INCHES UNLESS OTHERWISE SPECIFIED	FILE	PROJECT REFERENCE		
		DF/71C	APS470G RENTAL PACKAGE		
	TOLERANCES: X.X ± 0.100 X.XX ± 0.050 X.XXX ± 0.005	THIRD ANGLE PROJECTION	SCALE/SHEET SIZE	DRAWN BY	ENGINEERING STATUS
	ANGULAR ± 1'		1=10/B	K NUNN	PROT X PET X PRD 0
TITLE	SHEET			DATE	DRAWING NUMBER
1	1 OF 1			02-09-17	71C137
2		FILTER ASSEMBLY-COALESCEING (APS470G)			1