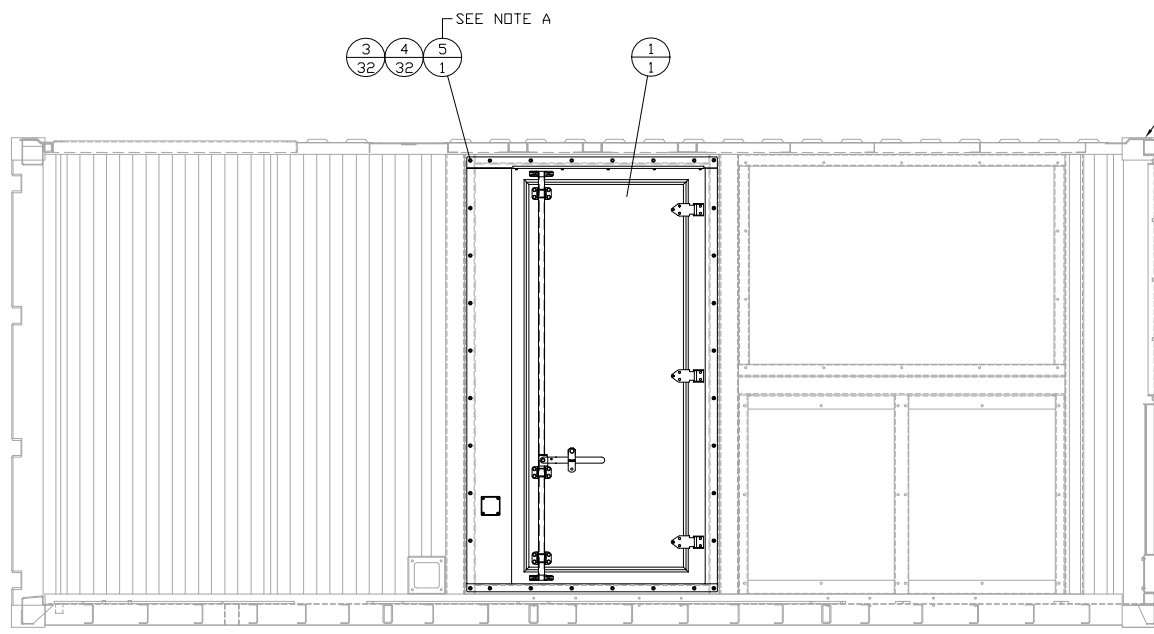
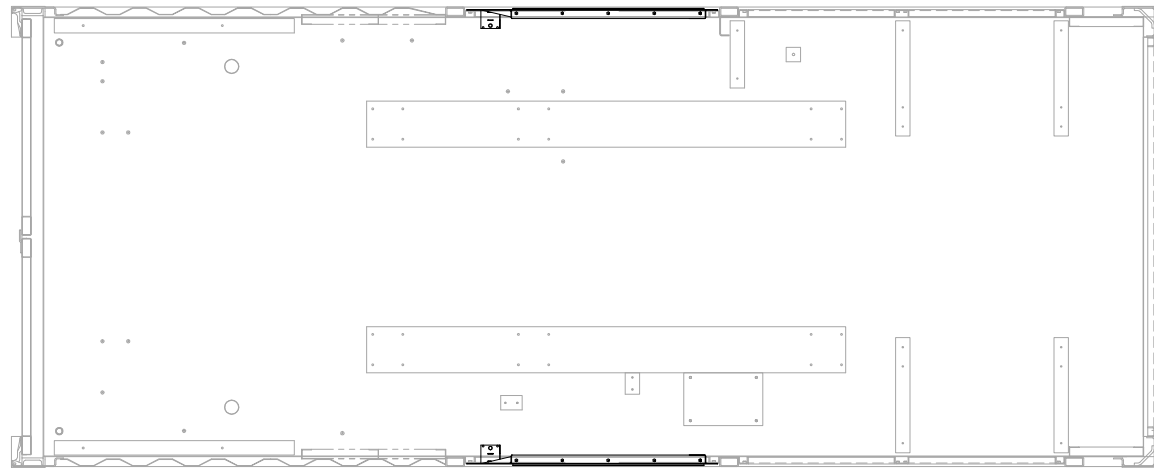
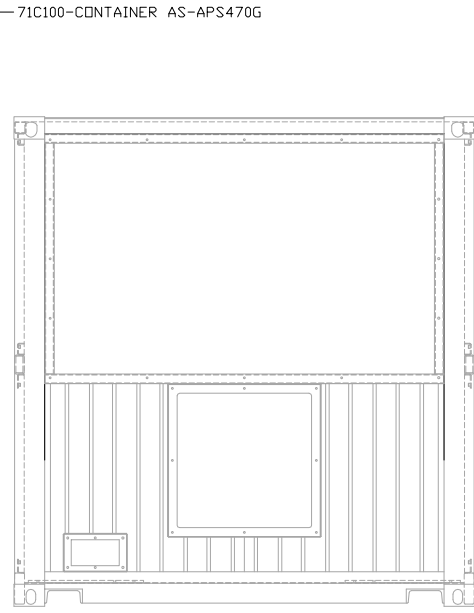


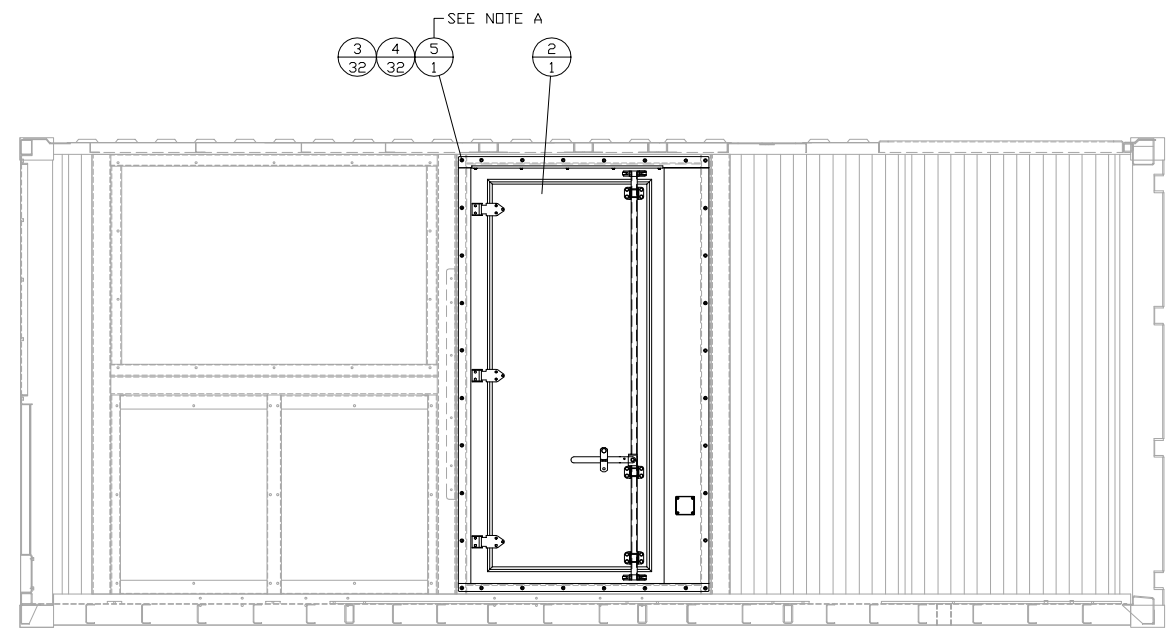
ITEM	QTY.	PART No.	DESCRIPTION
1	1	88C211	DOOR GROUP-PERSONNEL CURB SIDE
2	1	71C160	DOOR GROUP-PERSONNEL STREET SIDE
3	64	198-4776	WASHER-HARD
4	64	8T-4908	BOLT-M8x1.25 - 25MM
5	1	0221241	SEALANT-WHITE



CURB SIDE



CAB END



STREET SIDE

71C100-CONTAINER AS-APS470G

SEE NOTE A

SEE NOTE A

NOTE A: APPLY WHITE SEALANT (0221241) AROUND THE PERIMETER OF LOUVER ASSEMBLIES AFTER INSTALLATION.

01-25-17 REV BY		<b>ALTORFER POWER SYSTEMS</b> 6315 W. FAUBER RD. BARTONVILLE, IL 61607 PHONE (309) 697-1234 FAX (309) 262-7546	
		THIS DOCUMENT CONTAINS PROPRIETARY INFORMATION OF ALTORFER, INC. WITHOUT THE WRITTEN PERMISSION OF ALTORFER, INC., ANY COPYING OR OTHER USE EXCEPT THAT FOR WHICH IT WAS INTENDED IS PROHIBITED.	
PET BUILD UPDATES	CHANGE NOTICE	ALL DIMENSIONS IN INCHES UNLESS OTHERWISE SPECIFIED	FILE
		TOLERANCES: XX ± 0.100 ANGLE X.XX ± 0.060 PROJECTION XXX ± 0.005 ANGULAR ± 1'	SCALE/SHEET SIZE 1=20/D SHEET 1 OF 1
1	NO	TITLE	PROJECT REFERENCE
		MOUNTING GP-PERSONNEL DOOR	APS470G RENTAL PACKAGE DRAWN BY K NUNN DATE 01-25-17 ENGINEERING STATUS PROTO X PET X PRODD 0
			DRAWING NUMBER
			71A119-1