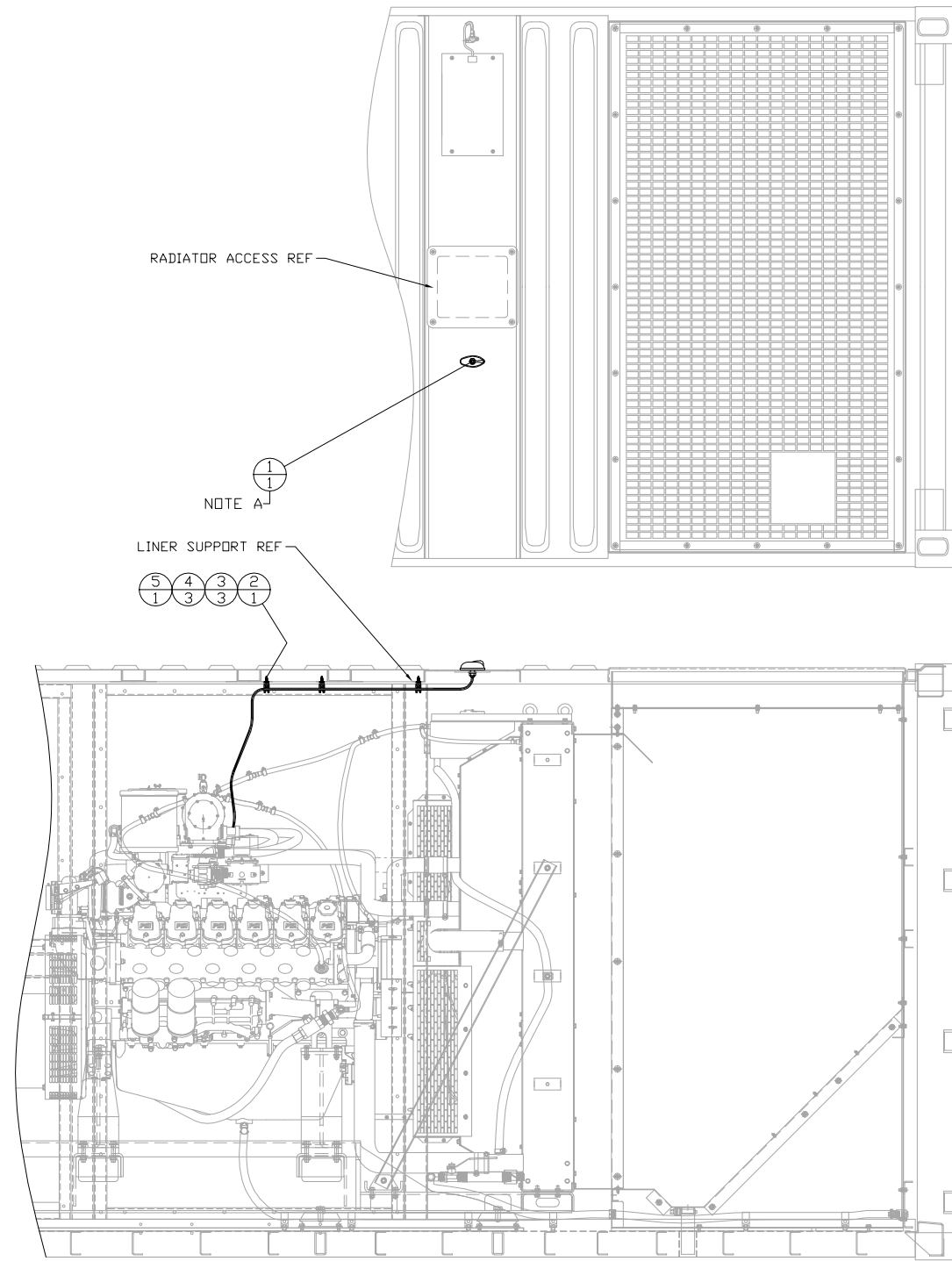


ITEM	QTY.	PART No.	DESCRIPTION
1	1	A10AA1928A	MASTERTRAK ANTENNA (PSI SUPPLIED)
2	1	343-8460	1/4" WIRE LOOM 75' LONG
3	3	156-6175	CLIP-LADDER 90°
4	3	12544519	SCREW-SELF TAPPING 1/4-14 X 1.00"
5	1	SILICONE CAULK	CLEAR SILICONE CAULK



NOTE A: MASTERTRAK ANTENNA A10AA1928A RECEIVED WITH PSI 22L ENGINE

ALTORFER 6315 W. FAUBER RD. PHONE (309) 697-1234 BARTONVILLE, IL 61807 FAX (309) 282-7546		ALTORFER POWER SYSTEMS PROJECT REFERENCE APS470G RENTAL PACKAGE	
THIS DOCUMENT CONTAINS PROPRIETARY INFORMATION OF ALTORFER, INC. WITHOUT THE WRITTEN PERMISSION OF ALTORFER, INC., ANY COPYING OR OTHER USE EXCEPT THAT FOR WHICH IT WAS INTENDED IS PROHIBITED.		ALL DIMENSIONS IN INCHES UNLESS OTHERWISE SPECIFIED	
TOLERANCES: .XX ± 0.100 .XXX ± 0.050 .XXXX ± 0.005	THIRD ANGLE PROJECTION	SCALE/SHEET SIZE 1=20/C	DRAWN BY K NUNN
SHEET 1 OF 1	DATE 02-13-17	ENGINEERING STATUS PROTO PET PROD X X X	DRAWING NUMBER 71A118-1
TITLE MOUNTING GROUP-MASTERTRAK ANTENNA		DRAWING NUMBER 71A118-1	