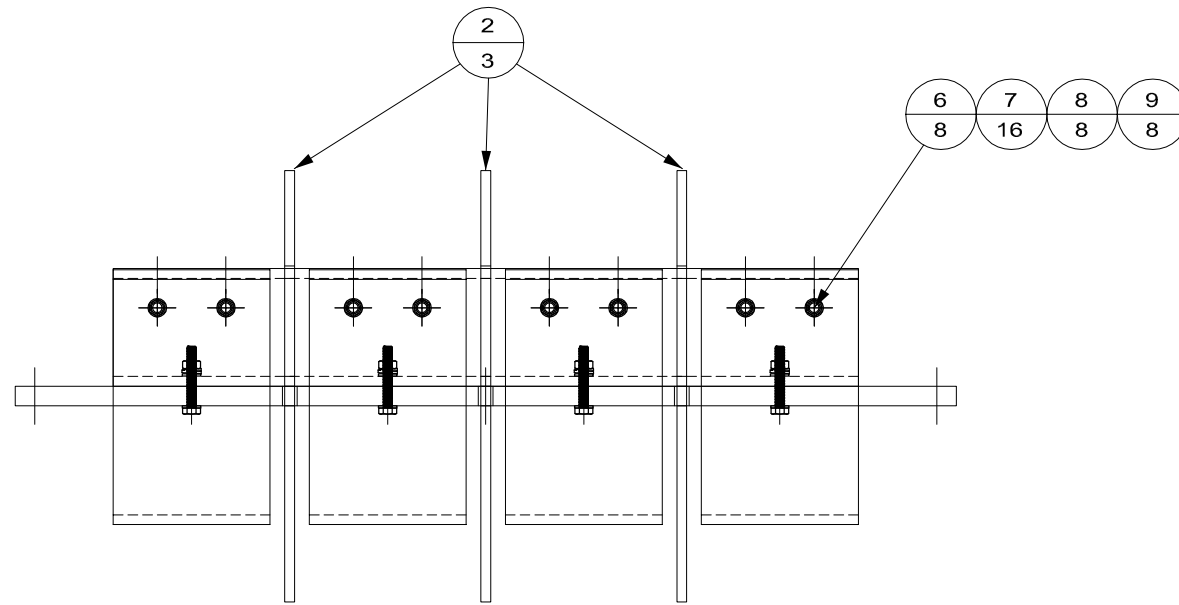
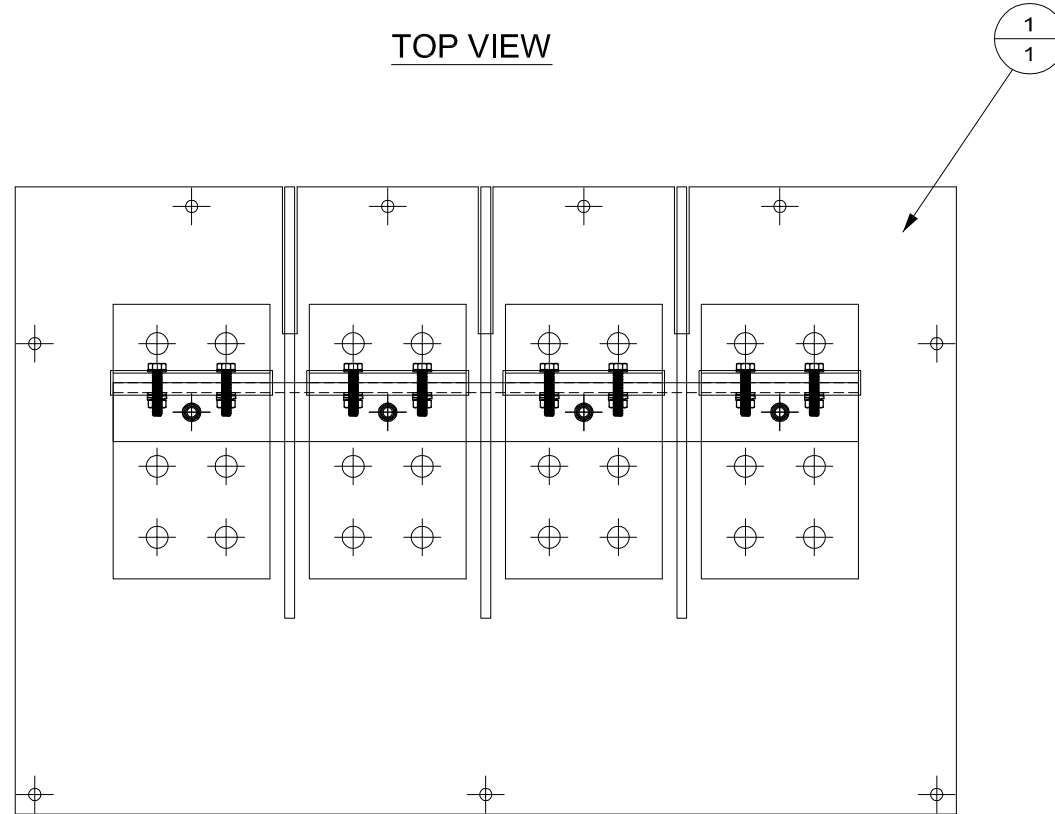


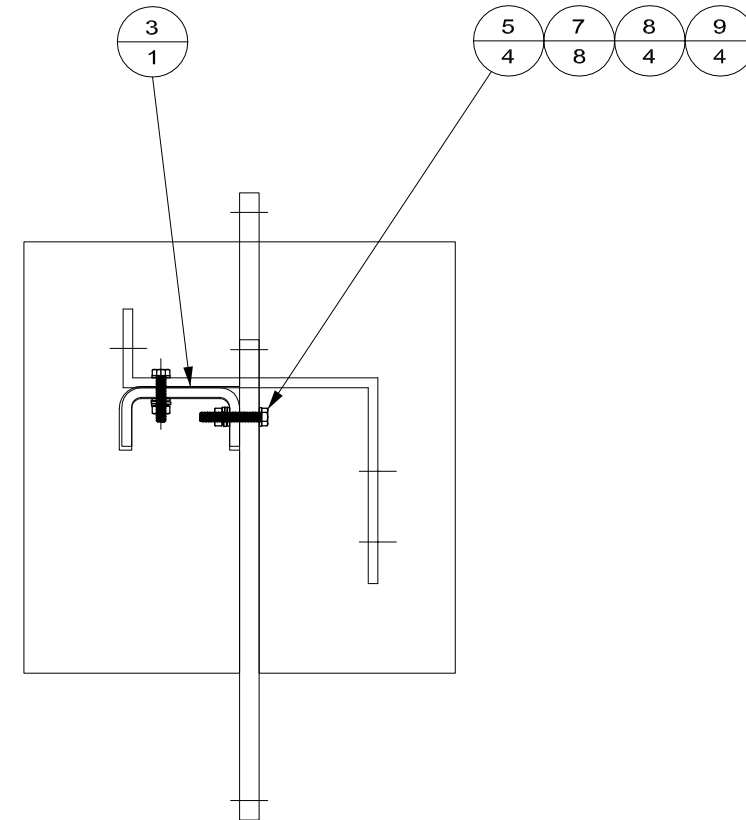
INCH 68E380-01



TOP VIEW



FRONT VIEW



SIDE VIEW

NOTE	ITEM	QTY	MEAS UNIT	CAT PART NO.	ALTORFER PART NO.	NAME
PARTS LIST						
	1	1			68E366	LOAD BUS MAIN SHEET
	2	3			68E367	LOAD BUS DIVIDER
	3	1			68E368	LOAD BUS MOUNT
	4	4			68E369	LOAD BUS
	5	4		8C-8451		BOLT - M6X1 - 40MM LONG
	6	8		8T-4971		BOLT - M6X1 - 30MM LONG
	7	24		8T-4205		WASHER-HARD M6
	8	12		3B-4504		WASHER - LOCK M6
	9	12		5C-2890		NUT - M6X1

TORQUE VALUES - 1E0279B

ITEMS 5 & 6 - 12 ± 3Nm

02/25/2016 D. ROLING	DATE BY	ALTORFER		ALTORFER POWER SYSTEMS	
		6315 W. FAUBER RD. BARTONVILLE, IL 61607		PHONE (309) 697-1234 FAX (309) 282-7546	
THIS DOCUMENT CONTAINS PROPRIETARY INFORMATION OF ALTORFER, INC. WITHOUT THE WRITTEN PERMISSION OF ALTORFER, INC., ANY COPYING OR OTHER USE EXCEPT THAT FOR WHICH IT WAS INTENDED IS PROHIBITED					
ALL DIMENSIONS IN INCHES UNLESS OTHERWISE SPECIFIED		FILE DF/68E	PROJECT REFERENCE XG135A RENTAL UNIT		
TOLERANCES: X.X ± 0.100 X.XX ± 0.060 X.XXX ± 0.005	THIRD ANGLE PROJECTION	SCALE/SHEET SIZE 1=5/B	DRAWN BY D. ROLING	QUOTE NUMBER -	
ANGULAR ± 1°		SHEET 1 OF 1	DATE 02/12/2016	WORK ORDER NUMBER -	
TITLE LOAD BUS ASSEMBLY			DRAWING NUMBER 68E380-01		