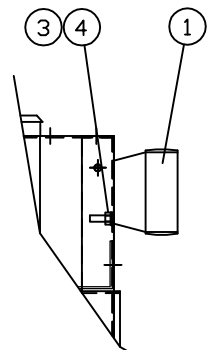
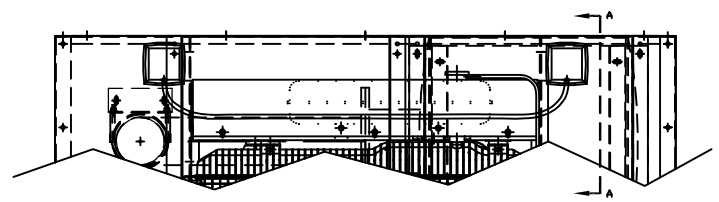


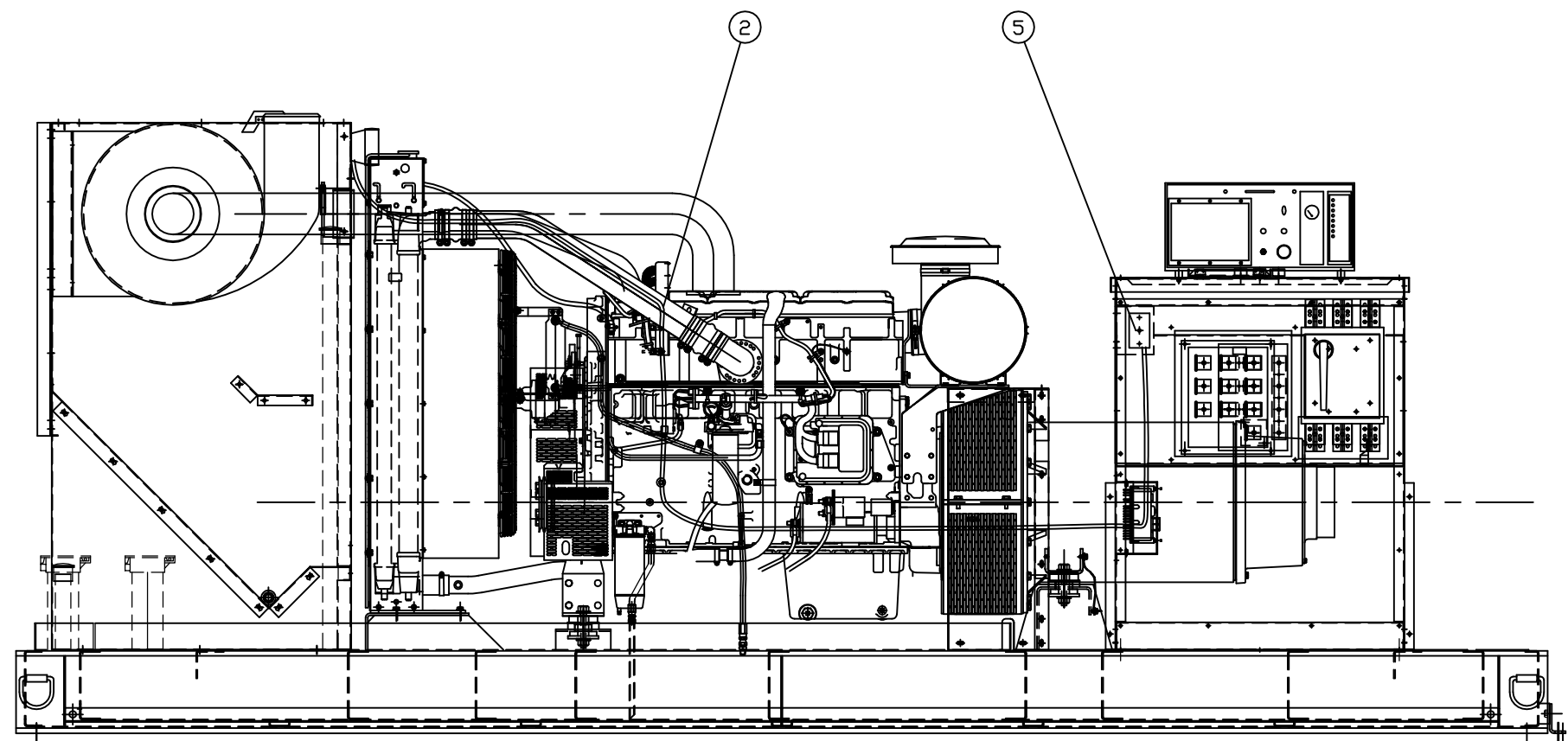
INCH 57A127

ITEM	QTY.	DESCRIPTION	WEIGHT
1	2	9X-1439 - LAMP GP.	4
2	1	57E162 - ENCLOSURE LIGHTING HARNESS	1
3	2	2Y-5829 - M10 NUT	-
4	2	6V-5839 - M10 WASHER	-
5	1	6X546 - 0-60 TIMER	1

TOTAL = 6



VIEW A-A
SCALE = 2



DATE BY	ALTORFER POWER SYSTEMS 6315 W. FAUBER RD. PHONE (309) 697-1234 BARTONVILLE, IL 61607 FAX (309) 282-7546			
	THIS DOCUMENT CONTAINS PROPRIETARY INFORMATION OF ALTORFER, INC. WITHOUT THE WRITTEN PERMISSION OF ALTORFER, INC., ANY COPYING OR OTHER USE EXCEPT THAT FOR WHICH IT WAS INTENDED IS PROHIBITED			
CHANGE NOTICE	ALL DIMENSIONS IN INCHES UNLESS OTHERWISE SPECIFIED	FILE	PROJECT REFERENCE	
		DF/57A	XQ500 RENTAL PACKAGE	
	TOLERANCES: X.X ± 0.100 X.XX ± 0.060 X.XXX ± 0.005	THIRD ANGLE PROJECTION	SCALE/SHEET SIZE	DRAWN BY
	ANGULAR ± 1°		1=25/B	D. LUCAS
TITLE		SHEET	DATE	WORK ORDER NUMBER
		1 OF 1	3/17/03	
2	1	XQ500 INTERIOR LIGHTS GROUP		DRAWING NUMBER 57A127