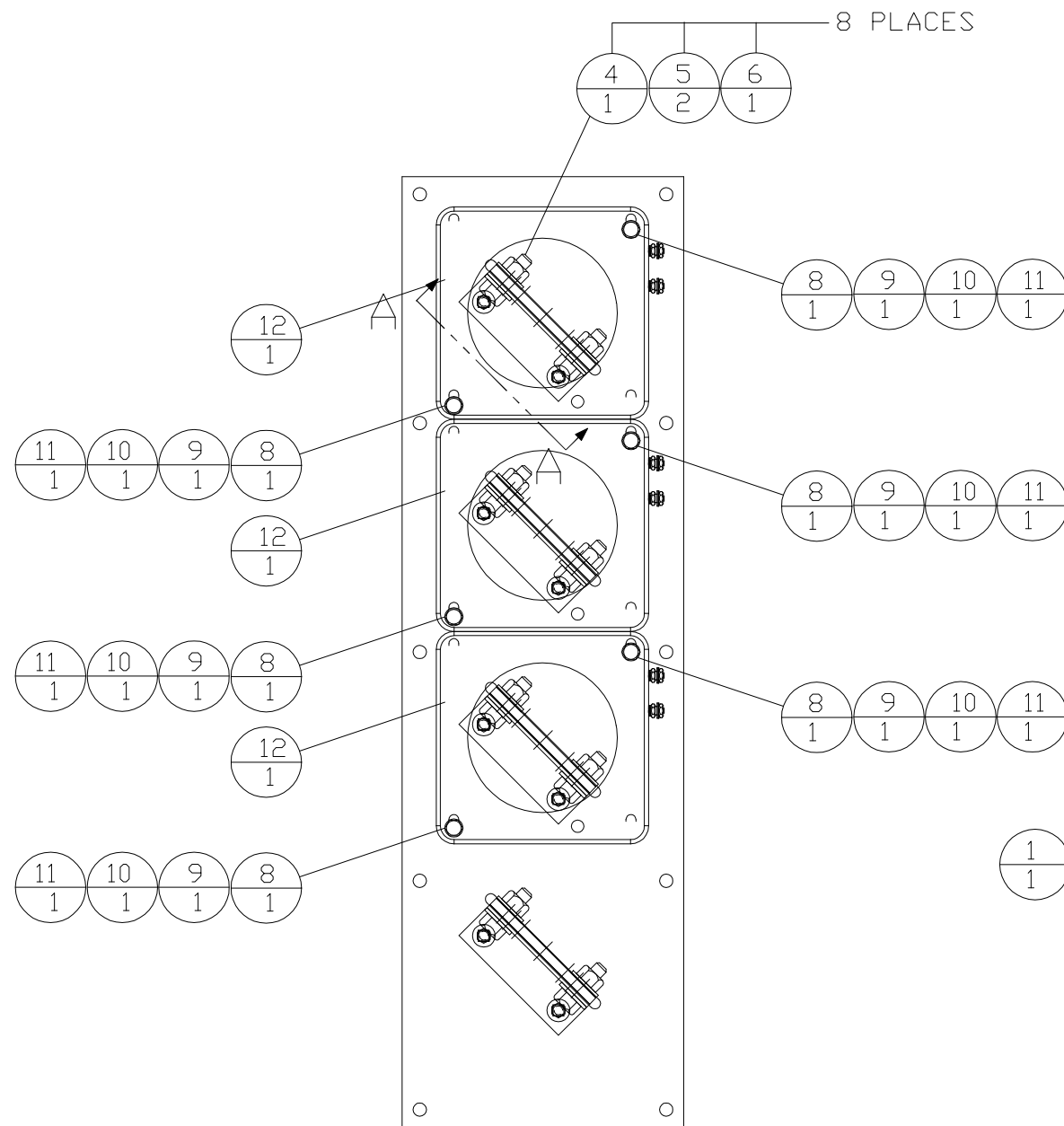
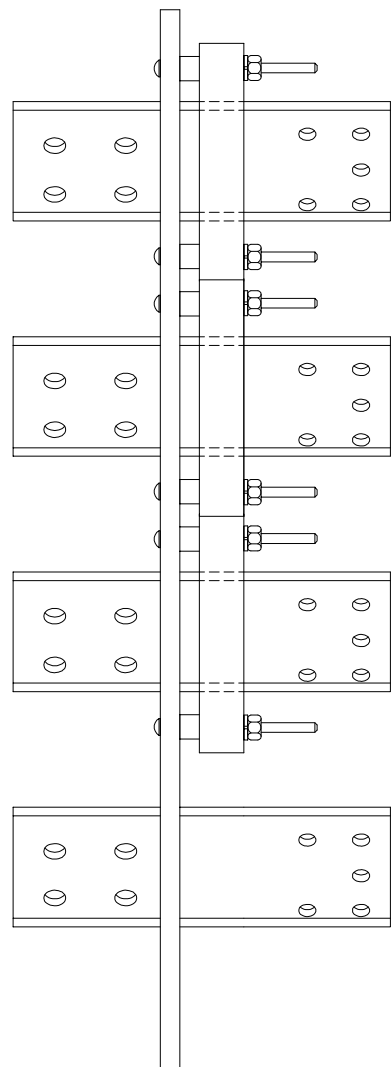
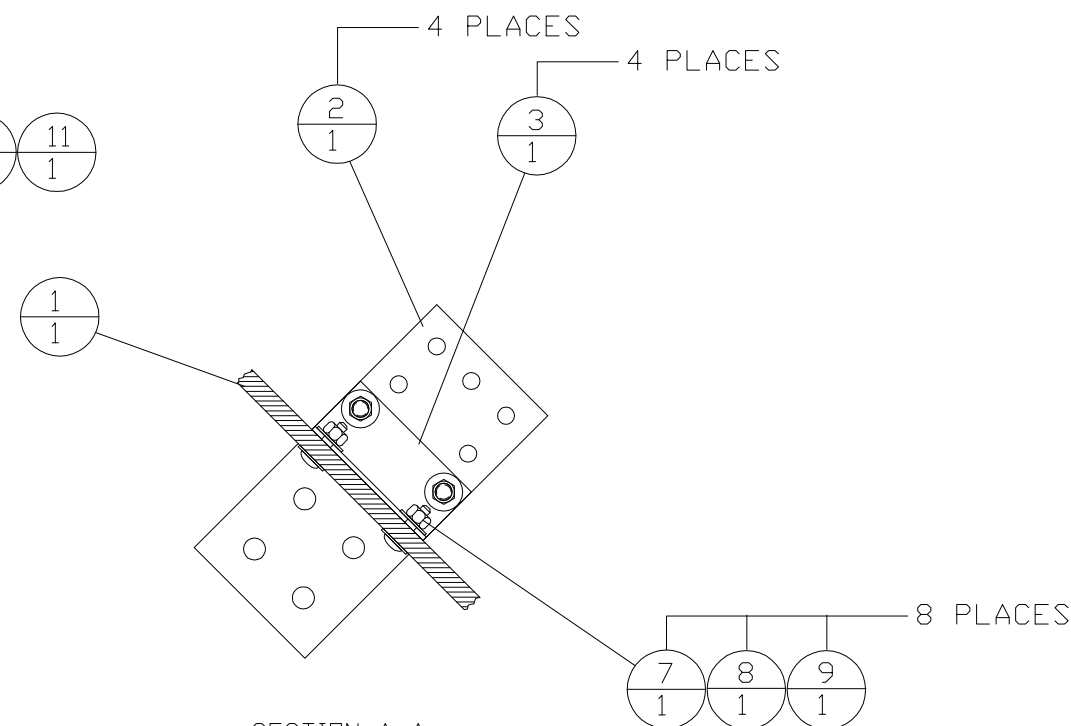


INCH 54E310



ITEM	QTY.	CAT P/N	ALTORFER P/N	DESCRIPTION	WEIGHT
1	1		54E311	BUS MOUNTING BOARD	6 Lbs
2	4		54E102	BUS - LOAD	16 Lbs
3	4		54E103	BRACKET - BUS	4 Lbs
4	8	9B-7237		BOLT 3/8-16x1.25	1 Lbs
5	16	8T-4896		WASHER - FLAT 3/8"	1 Lbs
6	8	2K-4973		NUT SELF LOCKING - 3/8-16	1 Lbs
7	8		107697	BOLT - CARRIAGE 1/4-20x1.25	- Lbs
8	14	2D-6235		NUT SELF LOCKING - 1/4-20	- Lbs
9	14	8T-4205		WASHER - FLAT 1/4"	- Lbs
10	6		MI0211	BOLT - CARRIAGE 1/4-20x3.0	- Lbs
11	6	388-3300	54E104	SPACER	- Lbs
12	3	122-6587		TRANSFORMER - CURRENT 1500:5	3 Lbs
TOTAL					32 Lbs



SECTION A-A
TYP 4 PLACES
ITEM 12 REMOVED

DATE BY				ALTORFER POWER SYSTEMS 6315 W. FAUBER RD. PHONE (309) 697-1234 BARTONVILLE, IL 61607 FAX (309) 282-7546	
CHANGE NOTICE	ALL DIMENSIONS IN INCHES UNLESS OTHERWISE SPECIFIED	FILE	PROJECT REFERENCE		
		DF\54E	APS400 C15 ACERT		
	TOLERANCES: XX ± 0.100 X.XX ± 0.060 X.XXX ± 0.005	THIRD ANGLE PROJECTION	SCALE/SHEET SIZE	DRAWN BY	QUOTE NUMBER
	ANGULAR ± 1°		1=5/B	P. PETERSON	0
TITLE		SHEET	DATE	WORK ORDER NUMBER	
		1 OF 1	5/28/2013	0	
2	1	ND	LOAD BOARD AS.		DRAWING NUMBER
					54E310