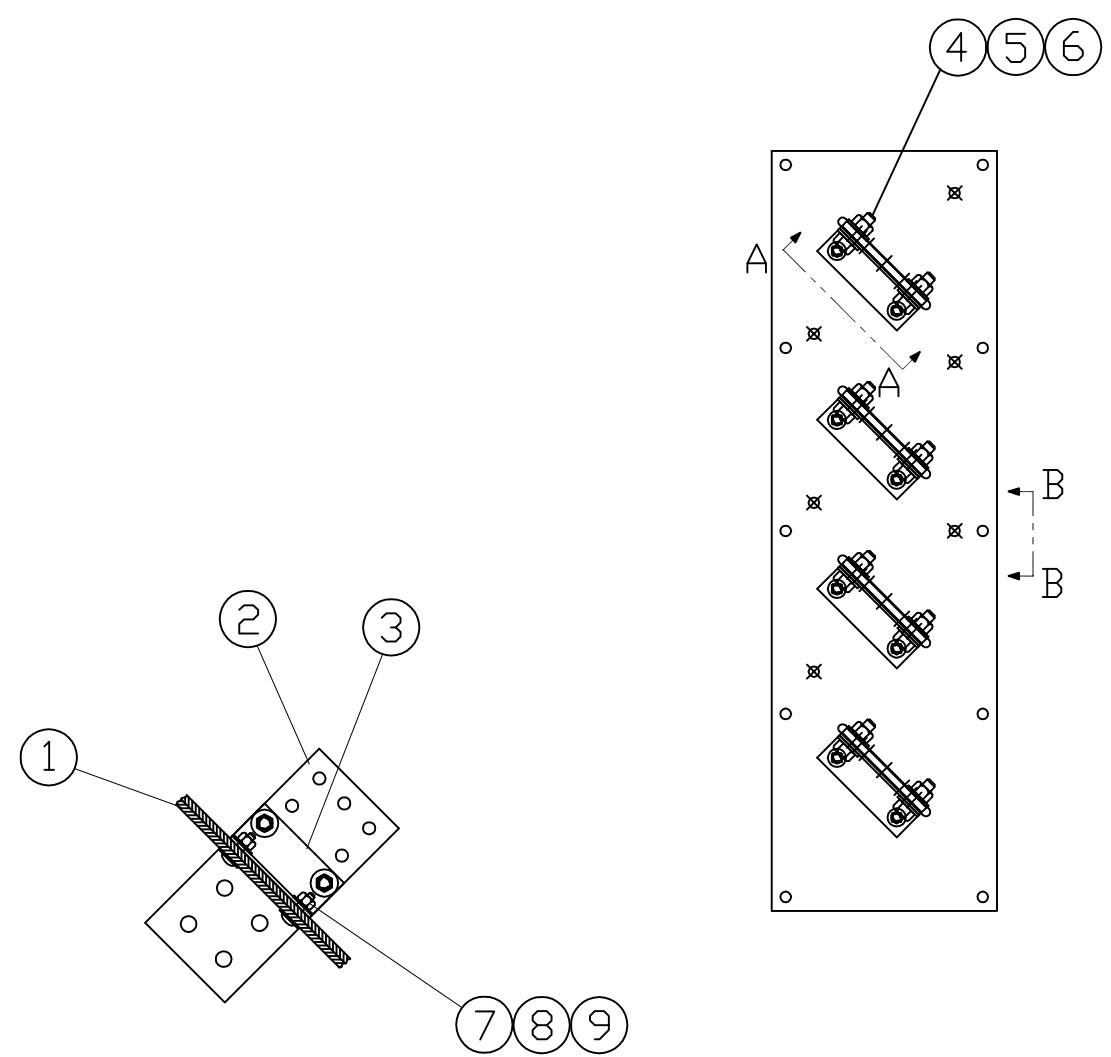
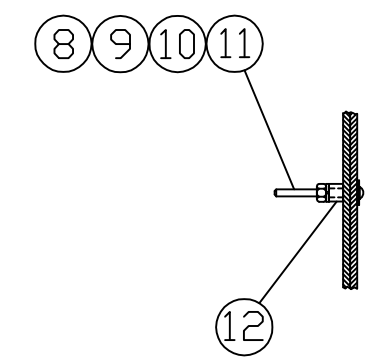


COMP	QTY	DESCRIPTION	WEIGHT
1	2	54E101 0.25 GLAS. BUSS-MTG BRD	2
2	4	54E102 0.25x4 COPPER BUSS-LOAD	12
3	4	54E103 10GA FRMD STL BUSS-BRKT	4
4	8	13107 3/8-16x1.25 BOLT	1
5	16	33008 3/8" WASHER-FLAT	1
6	8	36306 3/8-16 NUT	1
7	8	--- 1/4-20x1.25 BOLT-CARIGE	-
8	14	36302 1/4-20 NUT	-
9	22	33004 1/4' WASHER-FLAT	-
10	6	71063 1/4" LOCKWASHER	-
11	6	--- 1/4-20x3.0 SCREW-TRUSSHD	-
12	6	54E104 1/2" GLAS. TUBE SPACER	-

TOTAL 21



SECTION A-A
TYP 4 PLACES



SECTION B-B
TYP ALL HOLES
MARKED "X"

LOADBOARD ASSEMBLY					
ALTORFER PACKAGING		ALTORFER POWER SYSTEMS #1 CAPITOL DRIVE P.O. BOX 2550 PH. 309-694-1234 EAST PEORIA, IL. 61611-0550 FAX 309-694-1262		ALTORFER PACKAGING	
JOB REF.				DRN BY	
				M. RANTA	
				QUOTE NO.	
				DATE	
				05-30-00	
				W/D NUMBER	
				SCALE	
				1=10	
				FILE	
				DRAWING NO.	
				SHEET 1 OF 1	
				54E100	
<small>PROPRIETARY INFORMATION UNAUTHORIZED DUPLICATION PROHIBITED</small>					