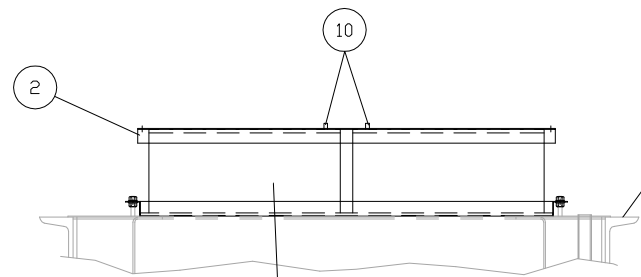
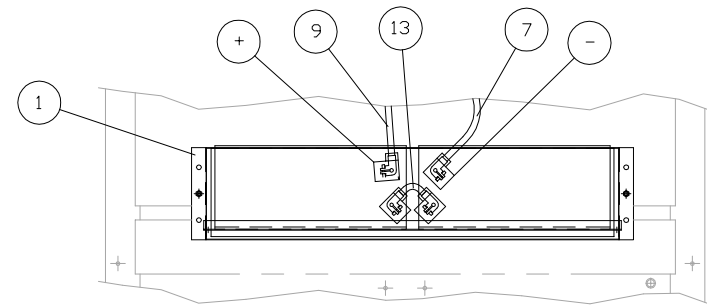
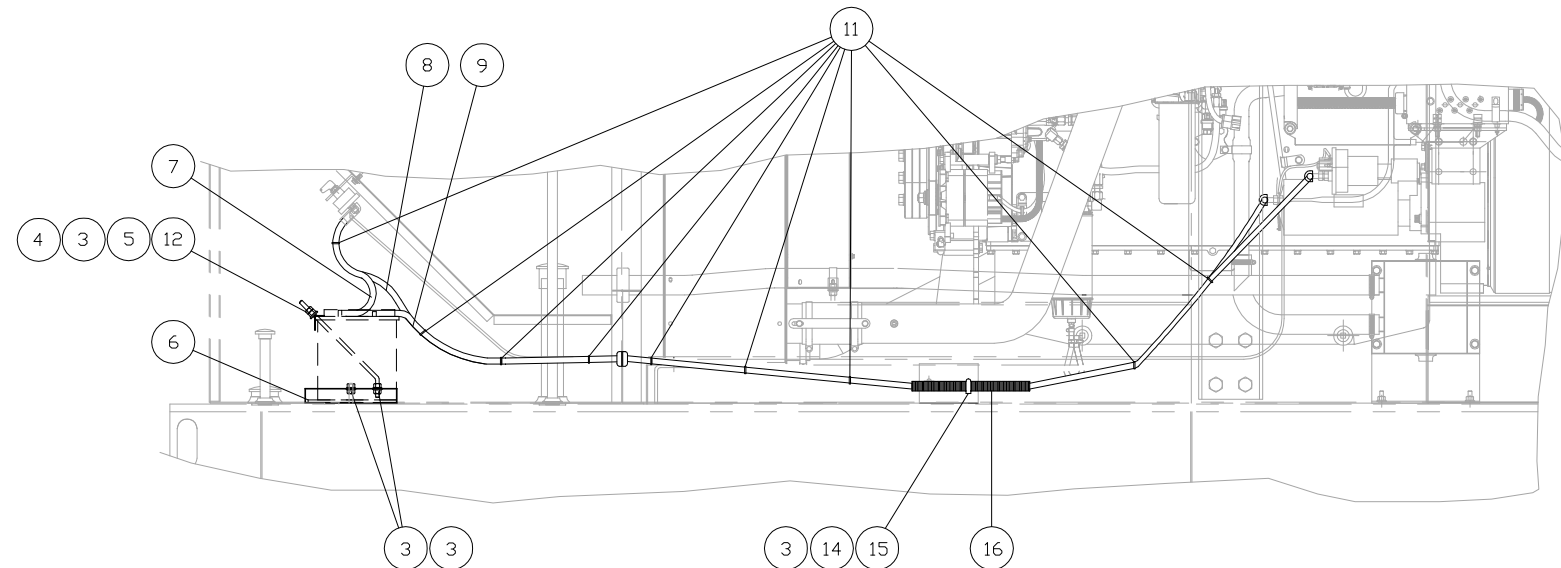


COMP	QTY	DESCRIPTION	WEIGHT
1	1	54E132 - BATTERY BASE	13
2	1	52C173 - BATTERY TIE DOWN	4
3	11	198-2970 - 3/8"-16 WHIZLOCK NUT	-
4	2	8T-4896 - 3/8" FLAT WASHER	-
5	2	6V-8801 - 3/8-16NC NUT	-
6	1	BB12-1/4" PLYWOOD - 41" x 9"	3
7	1	54E133 - BN1 CABLE ASSEMBLY	1
8	1	54E204 - BN2 CABLE ASSEMBLY	6
9	1	54E208 - BP1 CABLE ASSEMBLY	7
10	2	9X9730 - 8D 24 V BATTERY	80
11	9	6K-0806 - WHITE CABLE TIE	-
12	2	HRACK ROD - 3/8" THREADED ROD 14" Lg.	-
13	1	54E135 - B01 CABLE ASSEMBLY	1
14	1	345-8531 - 3/8-16NCx1 WHIZLOCK BOLT	-
15	1	0708814 - 1-1/2" VINYL CLAMP	-
16	1	5N-8359 - 1" WIRE LOOM	-
TOTAL			115



REF. 54A217
BASE MOUNTING GP.

NOTE



NOTE: CAT 9X9730 BATTERIES SUPPLIED BY CATERPILLAR QTY. 2

06/27/13 BML DATE		BY		ALTORFER		ALTORFER POWER SYSTEMS 6315 W. FAUBER RD. PHONE (309) 697-1234 BARTONVILLE, IL 61607 FAX (309) 282-7546	
EXPORT UPDATE	CHANGE NOTICE	THIS DOCUMENT CONTAINS PROPRIETARY INFORMATION OF ALTORFER, INC. WITHOUT THE WRITTEN PERMISSION OF ALTORFER, INC., ANY COPYING OR OTHER USE EXCEPT THAT FOR WHICH IT WAS INTENDED IS PROHIBITED					
		ALL DIMENSIONS IN INCHES UNLESS OTHERWISE SPECIFIED		FILE DF/54A	PROJECT REFERENCE XQ400A/APS400A RENTAL PACKAGE		
		TOLERANCES: X.X ± 0.100 X.XX ± 0.060 X.XXX ± 0.005	THIRD ANGLE PROJECTION	SCALE/SHEET SIZE 1=10/D	DRAWN BY BML		QUOTE NUMBER
		ANGULAR ± 1°		SHEET 1 OF 1	DATE 03-31-2008		WORK ORDER NUMBER
2	1	TITLE XQ400/APS400 STARTING BATTERY MOUNTING GROUP					DRAWING NUMBER 54A222-1