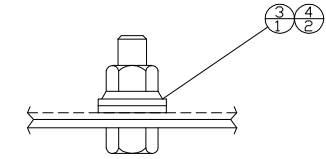
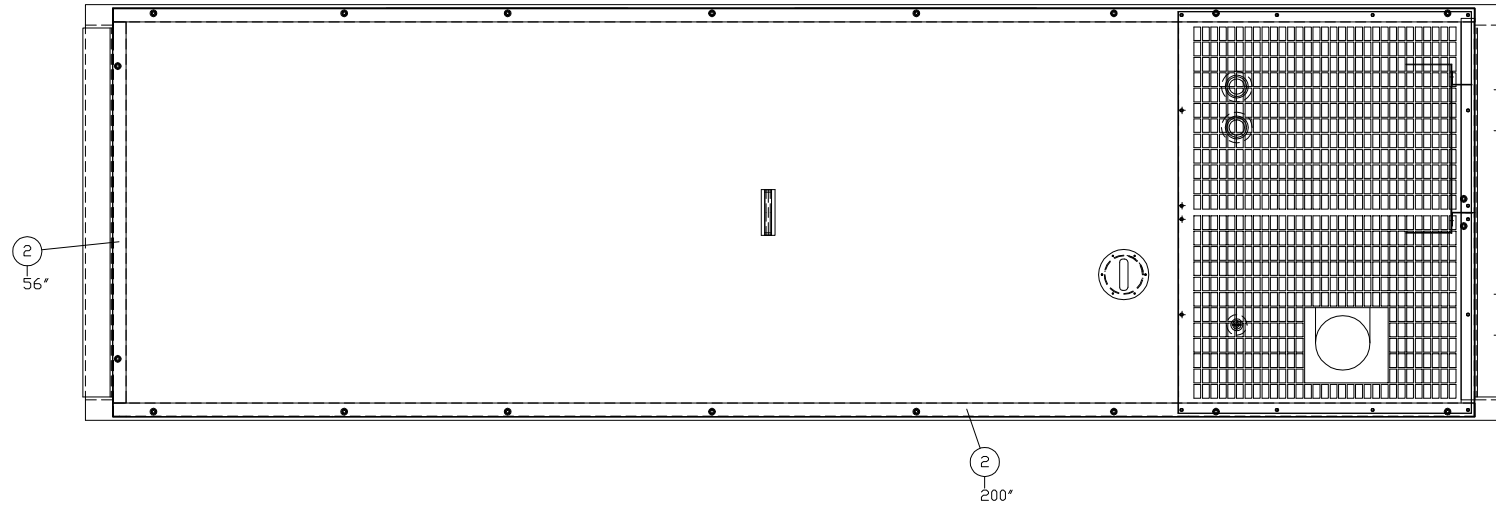
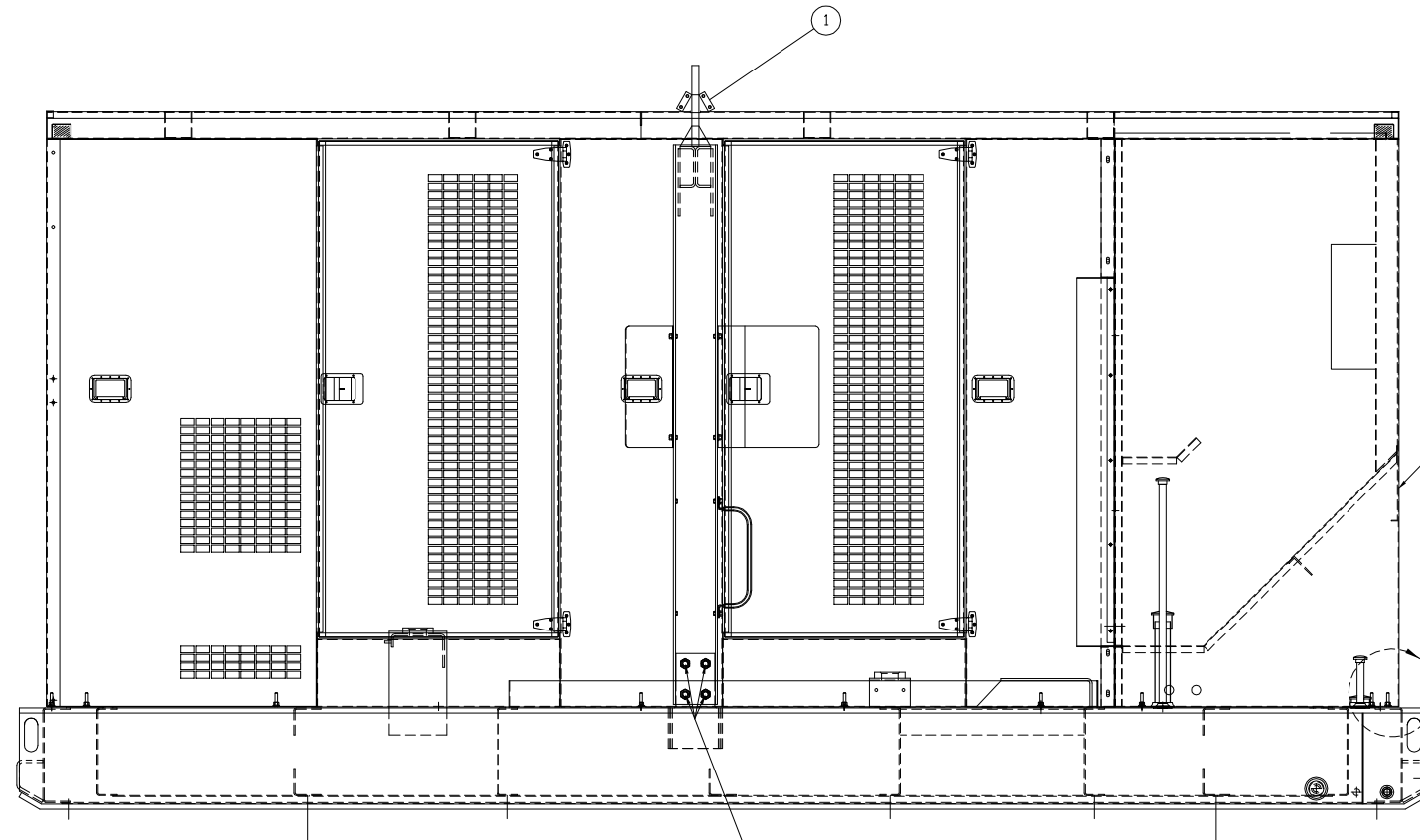


INCH 54A219-1

ITEM	QTY.	PART NO.	DESCRIPTION	WEIGHT
1	1	51C113	RAIN SKIRT	1
2	540	8694K74	3/16x2 GASKETING	1
3	20	198-2970	3/8"-16NC WHIZLOCK NUT	1
4	40	8T-5360	7/16" FLAT WASHER	-
TOTAL				3



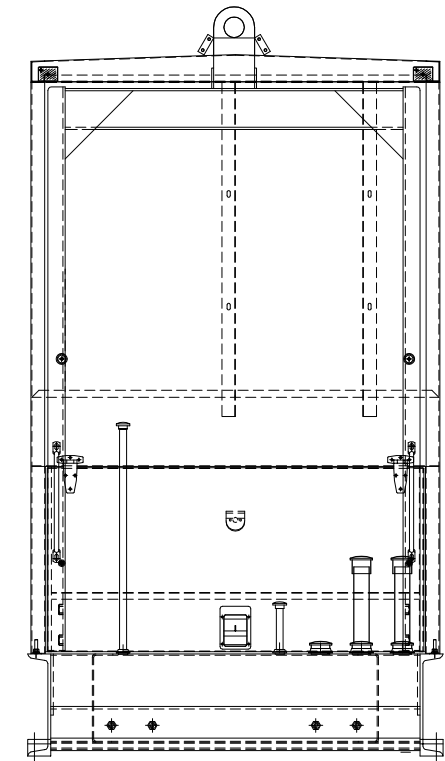
DETAIL A



REF 54A213 DUAL STD VOLTAGE ENCL. GP.  
 54A215 CSA SINGLE VOLTAGE ENCL. GP.  
 54A214 CSA DUAL VOLTAGE ENCL. GP.

REF. 54A102  
 BASE MTG. GP.

TORQUE LIFT ARCH MOUNTING BOLTS TO 265 +/- 35 Lbs/Ft



06/27/13 BML DATE BY	<b>ALTORFER POWER SYSTEMS</b> 6315 W. FAUBER RD.      PHONE (309) 697-1234 BARTONVILLE, IL 61607      FAX (309) 282-7546			
	<small>THIS DOCUMENT CONTAINS PROPRIETARY INFORMATION OF ALTORFER, INC. WITHOUT THE WRITTEN PERMISSION OF ALTORFER, INC., ANY COPYING OR OTHER USE EXCEPT THAT FOR WHICH IT WAS INTENDED IS PROHIBITED.</small>			
EXPORT UPDATE CHANGE NOTICE NO.	ALL DIMENSIONS IN INCHES UNLESS OTHERWISE SPECIFIED	FILE DF/54A	PROJECT REFERENCE XQ400/APS400 RENTAL PACKAGE	
	TOLERANCES: X.X ± 0.100 X.XX ± 0.060 X.XXX ± 0.005	THIRD ANGLE PROJECTION	SCALE/SHEET SIZE 1=20/C	DRAWN BY BML
	ANGULAR ± 1°		SHEET 1 OF 1	DATE 05/08/08
	TITLE XQ400/APS400 ENCL. MOUNTING GROUP			QUOTE NUMBER - WORK ORDER NUMBER - DRAWING NUMBER 54A219-1