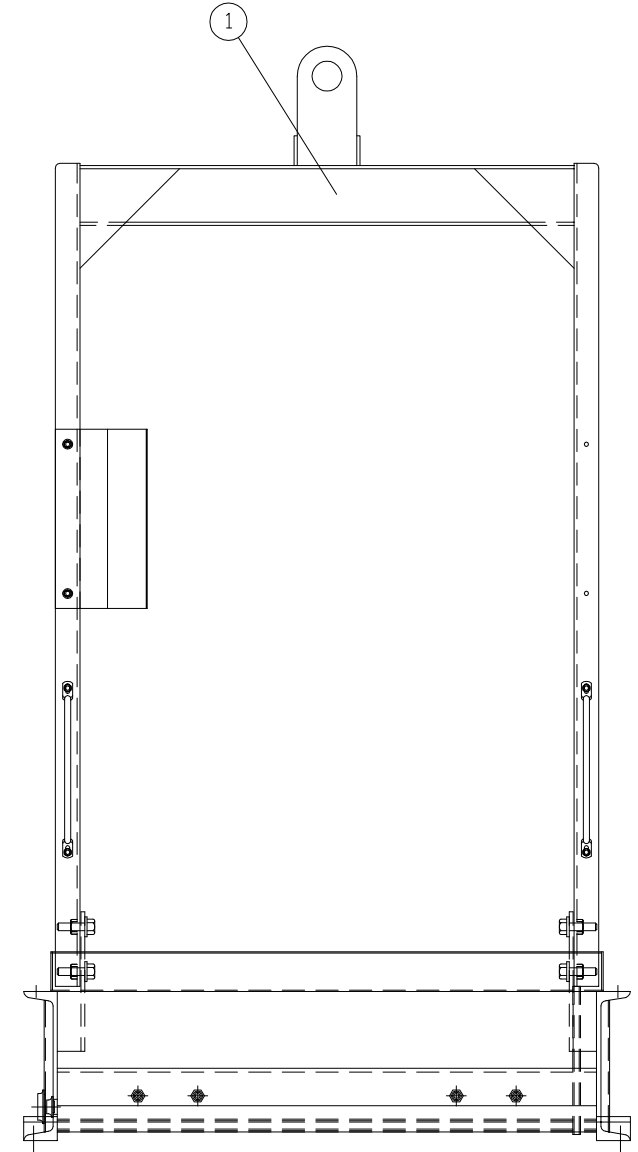
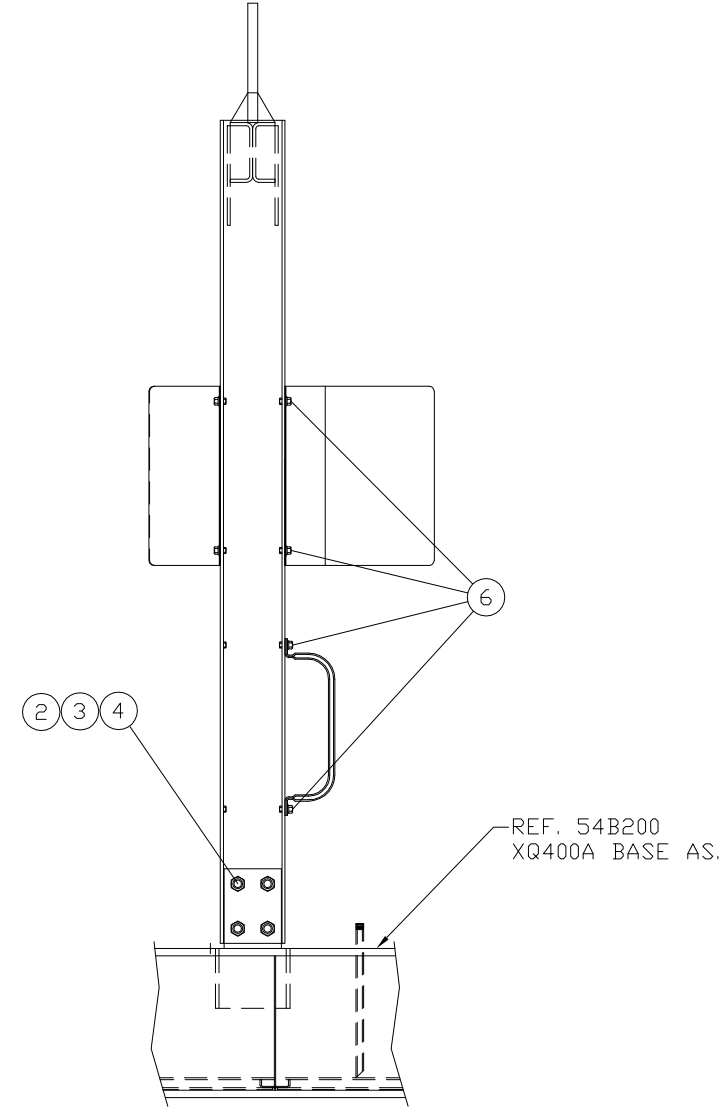
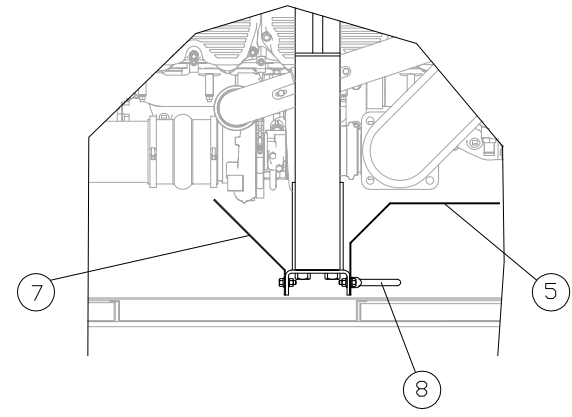



INCH 54A218-1



ITEM	QTY.	PART NO.	DESCRIPTION	WEIGHT
1	1	54B230	LIFT ARCH AS.	287
2	8	8T-4994	FLAT WASHER 3/4"	XX
3	8	1A-8063	BOLT 3/4"-10x2.50"	1
4	8	3B-4512	LOCK WASHER 3/4"	XX
5	1	53B233	HEAT SHIELD	12
6	8	345-8531	WHIZLOCK BOLT 3/8"-16x1"	XX
7	1	54B233	HEAT SHIELD - REAR	7
8	2	54C265-00	GRAB HANDLE	2
TOTAL				309

NOTE A: LEAVE LIFT ARCH MNT. BOLTS LOOSE UNTIL ENCLOSURE MNT. GP (54A219)

EXPORT UPDATE	CHANGE NOTICE			ALTORFER POWER SYSTEMS 6315 W. FAUBER RD. PHONE (309) 697-1234 BARTONVILLE, IL 61607 FAX (309) 282-7546	
		THIS DOCUMENT CONTAINS PROPRIETARY INFORMATION OF ALTORFER, INC. WITHOUT THE WRITTEN PERMISSION OF ALTORFER, INC., ANY COPYING OR OTHER USE EXCEPT THAT FOR WHICH IT WAS INTENDED IS PROHIBITED			
ND.	1	ALL DIMENSIONS IN INCHES UNLESS OTHERWISE SPECIFIED		FILE	PROJECT REFERENCE
		TOLERANCES: X.X ± 0.100 X.XX ± 0.060 X.XXX ± 0.005		DF/54A	XQ400/APS400 RENTAL PACKAGE
		ANGULAR ± 1°		SCALE/SHEET SIZE 1=20/B	DRAWN BY BML
TITLE		SHEET 1 OF 1		DATE 3/24/08	WORK ORDER NUMBER
		XQ400A/APS400A LIFT ARCH GROUP			DRAWING NUMBER 54A218-1