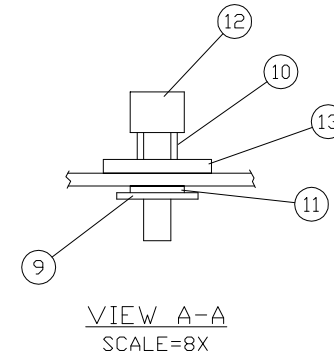
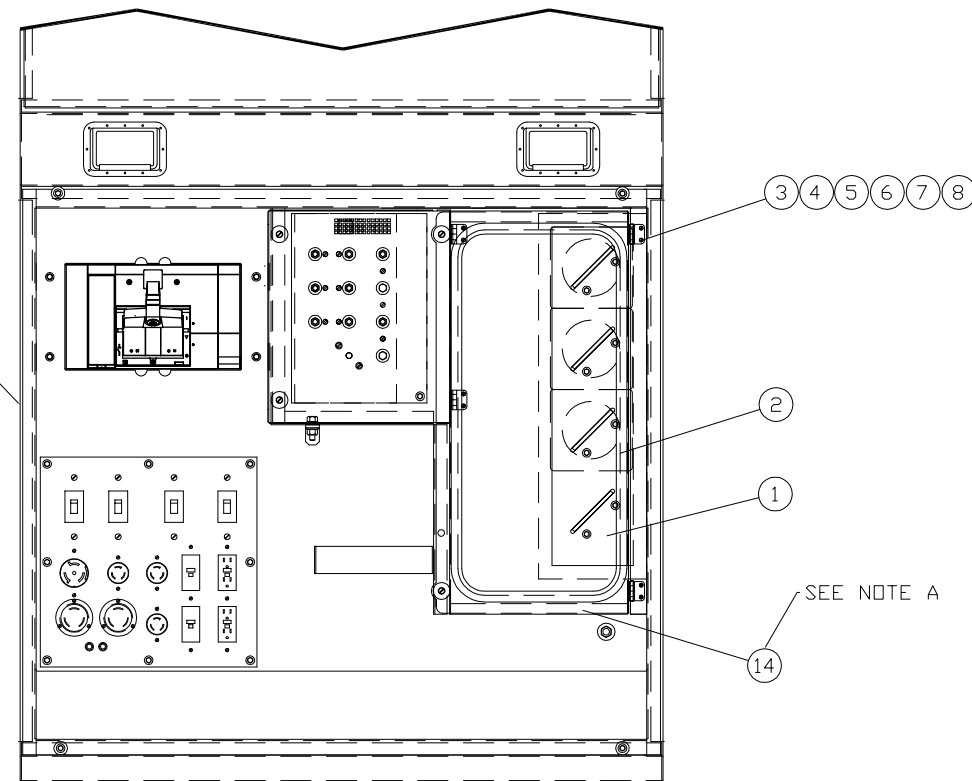



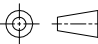
INCH 54A216-1

ITEM	QTY.	PART NO.	DESCRIPTION	WEIGHT
1	1	54C247	LOAD COVER WINDOW	4
2	1	AS990	WINDOW GROMMET- 72" Lg.	1
3	16	33614	#10 LOCK WASHER	1
4	16	36028	#10-24 NUT	-
5	16	33074	#10 FLAT WASHER	-
6	16	6V-7978	#10-24x.75 TAPPED HEAD SCREW	-
7	4	SSHINGE	HINGE	1
8	8	54D148	HINGE - LOAD GASKET	-
9	4	90102A030	SPLIT RETAINING PIN	-
10	4	9435K5	SPRING	-
11	4	95630A445	TEFLON FLAT WASHER	-
12	4	91035A625	THUMB SCREW	-
13	4	317-5700	1/4" NEOPREME BACKED FLAT WASHER	-
14	1	53C307-01	LOAD COVER DOOR ASSEMBLY	20
TOTAL				27

REF. 54A213 DUAL VOLTAGE ENCL. GP.
 54A215 CSA SINGLE VOLTAGE ENCL. GP.
 54A214 CSA DUAL VOLTAGE ENCL. GP.



NOTE A: 53C307-01 - LOAD COVER DOOR ASS. RECIEVED
 IN 54C200 - ENCLOSURE PARTS GP.

2	1	NO.	DATE	BY	 ALTORFER POWER SYSTEMS 6315 W. FAUBER RD. PHONE (309) 697-1234 BARTONVILLE, IL 61607 FAX (309) 282-7546						
					THIS DOCUMENT CONTAINS PROPRIETARY INFORMATION OF ALTORFER, INC. WITHOUT THE WRITTEN PERMISSION OF ALTORFER, INC., ANY COPYING OR OTHER USE EXCEPT THAT FOR WHICH IT WAS INTENDED IS PROHIBITED						
EXPORT UPDATE		CHANGE NOTICE		TOLERANCES: X.X ± 0.100 X.XX ± 0.060 X.XXX ± 0.005		THIRD ANGLE PROJECTION		FILE DF/54A		PROJECT REFERENCE APS400 RENTAL PACKAGE	
				ANGULAR ± 1°				SCALE/SHEET SIZE 1=10/C SHEET 1 OF 1		DRAWN BY BML DATE 05/07/08	
				TITLE APS400 LOAD DOOR MOUNTING GROUP						QUOTE NUMBER - WORK ORDER NUMBER - DRAWING NUMBER 54A216-1	