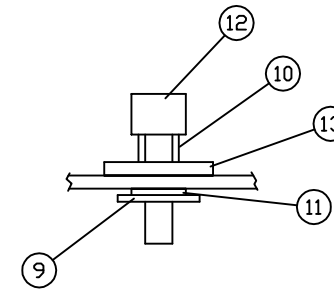
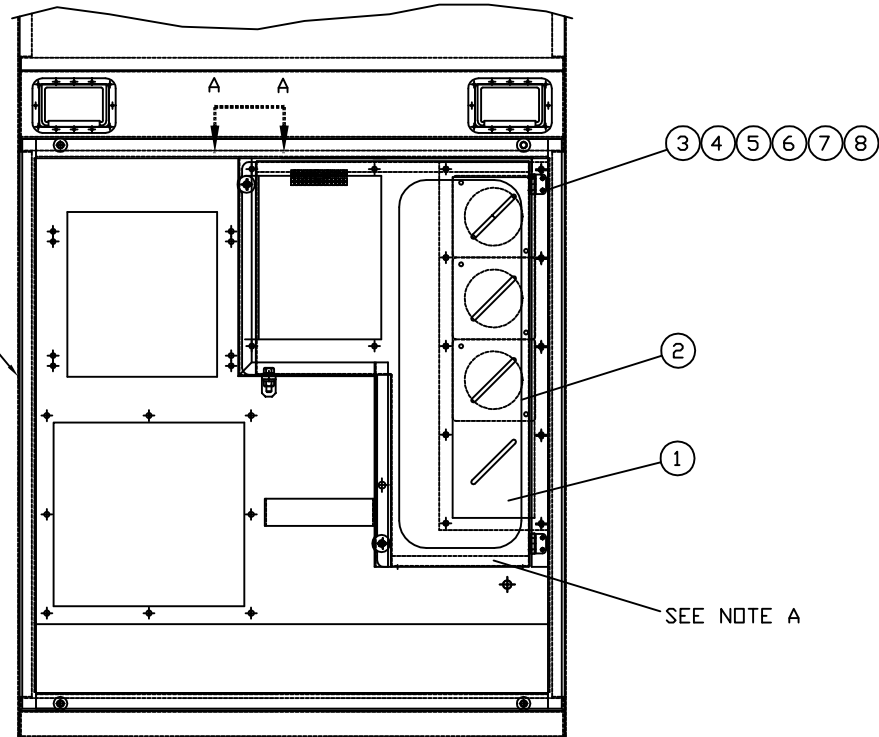


INCH 54A108-01

ITEM	QTY.	PART NUMBER	DESCRIPTION
1	1	54C126	PLEXIGLASS LOAD COVER
2	1	AS 990	WEATHERSTRIP
3	8	33614	WASHER-LOCK (#10)
4	8	36028	NUT (#10-24)
5	8	33074	WASHER-FLAT (#10)
6	8	6V-7978	SCREW (#10-24 X 3/4")
7	2	SSHINGE	HINGE-STAINLESS STEEL
8	4	54D148	GASKET-SS HINGE
9	2	90102A030	RING-SPLIT RETAINING
10	2	9435K5	SPRING-PANEL (1/4")
11	2	95630A445	WASHER-TEFLON
12	2	91035A625	SCREW-PANEL
13	2	317-5700	WASHER-NEOPRENE (1/4")

REF. 54A106 DUAL VOLTAGE ENCL. GP.  
 54A125 CSA SINGLE VOLTAGE ENCL. GP.  
 54A130 CSA DUAL VOLTAGE ENCL. GP.



VIEW A-A  
 SCALE=8X

NOTE A: 54C157 - LOAD COVER DOOR AS. RECEIVED  
 IN 54C100 - ENCLOSURE PARTS GP.

10/26/15 D. BOILING DATE		BY		<b>ALTORFER POWER SYSTEMS</b>			
				6315 W. FAUBER RD. PHONE (309) 697-1234 BARTONVILLE, IL 61607 FAX (309) 282-7546			
UPDATE HARDWARE CHANGE NOTICE				THIS DOCUMENT CONTAINS PROPRIETARY INFORMATION OF ALTORFER, INC. WITHOUT THE WRITTEN PERMISSION OF ALTORFER, INC., ANY COPYING OR OTHER USE EXCEPT THAT FOR WHICH IT WAS INTENDED IS PROHIBITED			
				ALL DIMENSIONS IN INCHES UNLESS OTHERWISE SPECIFIED		FILE DF/54A	
TOLERANCES: X.X ± 0.100 X.XX ± 0.060 X.XXX ± 0.005		THIRD ANGLE PROJECTION		SCALE/SHEET SIZE 1=10/C		DRAWN BY M. RANTA	
ANGULAR ± 1'		SHEET 1 OF 1		DATE 07/10/2000		WORK ORDER NUMBER -	
TITLE XQ400 (3456) LOAD DOOR MOUNTING GROUP				DRAWING NUMBER 54A108-01			