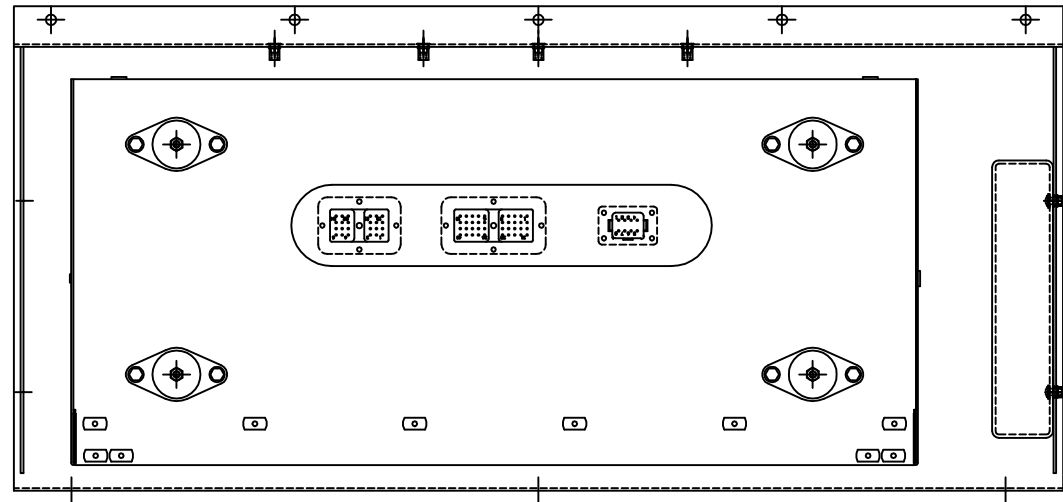
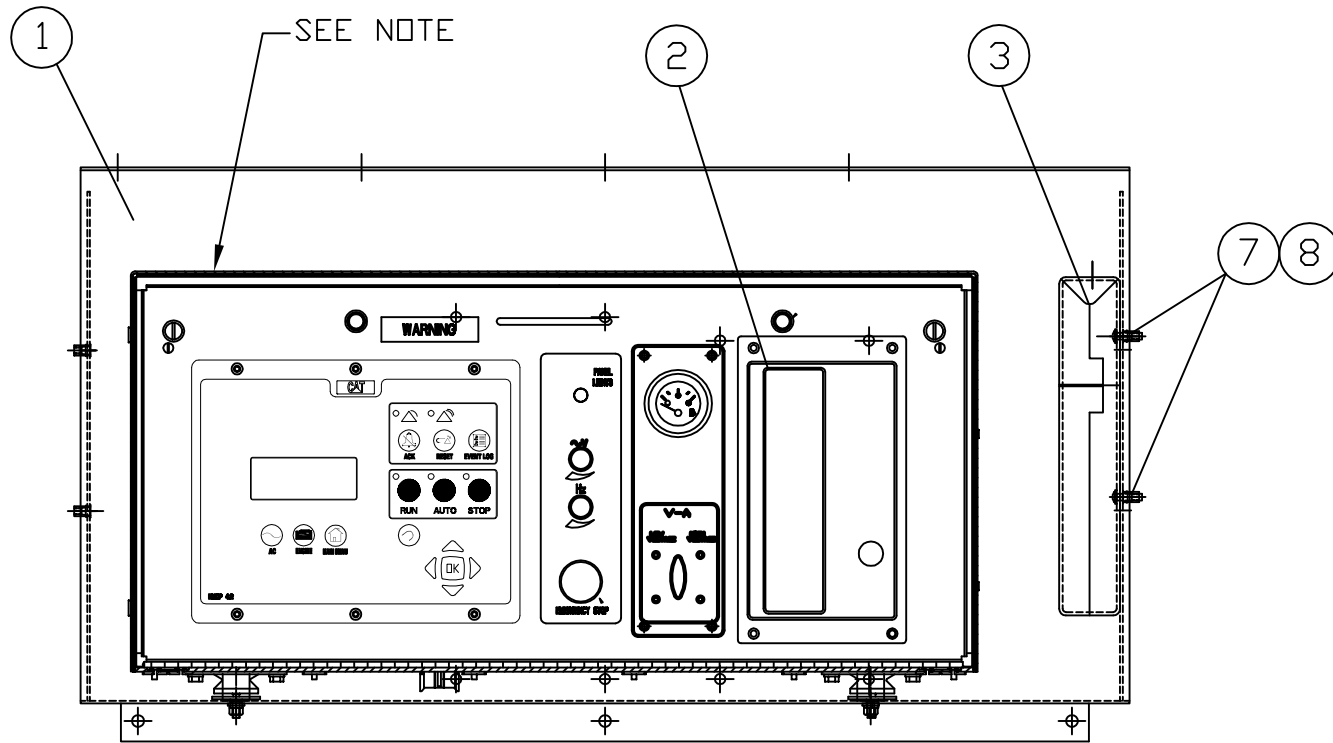


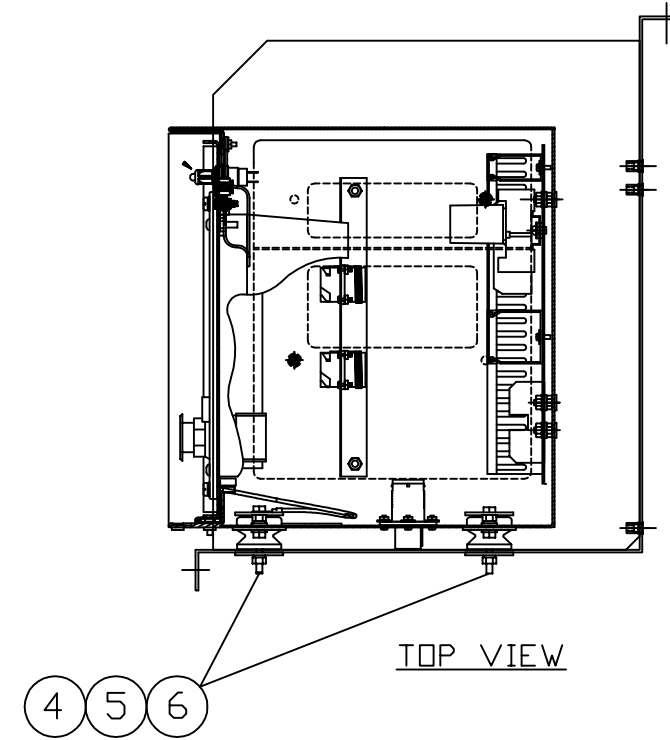
ITEM	QTY.	DESCRIPTION	WEIGHT
1	1	53C238 - CONTROL PANEL PAN AS.	64
2	1	53E420 - XQ230 DUAL VOLTAGE CONTROL PANEL	90
3	1	194-4184 - DOCUMENT BOX	1
4	4	65022 - 5/16"-18NCx2.25" Lg BOLT	1
5	4	502 - 5/16" FLAT WASHER	-
6	4	302 - 5/16"-18NC LOCK NUT	-
7	2	51480 - 1/4"-20NCx5/8" PHILLIPS FLATHEAD SCREW	-
8	2	272385 - 3/8" NEDPREME WASHER	-
TOTAL			156



TOP VIEW



TOP VIEW



TOP VIEW

DATE BY		ALTORFER		ALTORFER POWER SYSTEMS			
		6315 W. FAUBER RD. BARTONVILLE, IL 61607		PHONE (309) 697-1234 FAX (309) 282-7546			
THIS DOCUMENT CONTAINS PROPRIETARY INFORMATION OF ALTORFER, INC. WITHOUT THE WRITTEN PERMISSION OF ALTORFER, INC., ANY COPYING OR OTHER USE EXCEPT THAT FOR WHICH IT WAS INTENDED IS PROHIBITED							
CHANGE NOTICE		ALL DIMENSIONS IN INCHES UNLESS OTHERWISE SPECIFIED		PROJECT REFERENCE			
		FILE DF/53A		XQ230RM RENTAL PACKAGE			
		TOLERANCES: X.X ± 0.100 X.XX ± 0.060 X.XXX ± 0.005		SCALE/SHEET SIZE 1=10/C		DRAWN BY D. ROLING	
		THIRD ANGLE PROJECTION		SHEET 1 OF 1		DATE 05/06/2015	
ANGULAR ± 1°		TITLE XQ230RM DV CONTROL PANEL MOUNTING GROUP		WORK ORDER NUMBER			
1		NIL		DRAWING NUMBER 53A422-00			