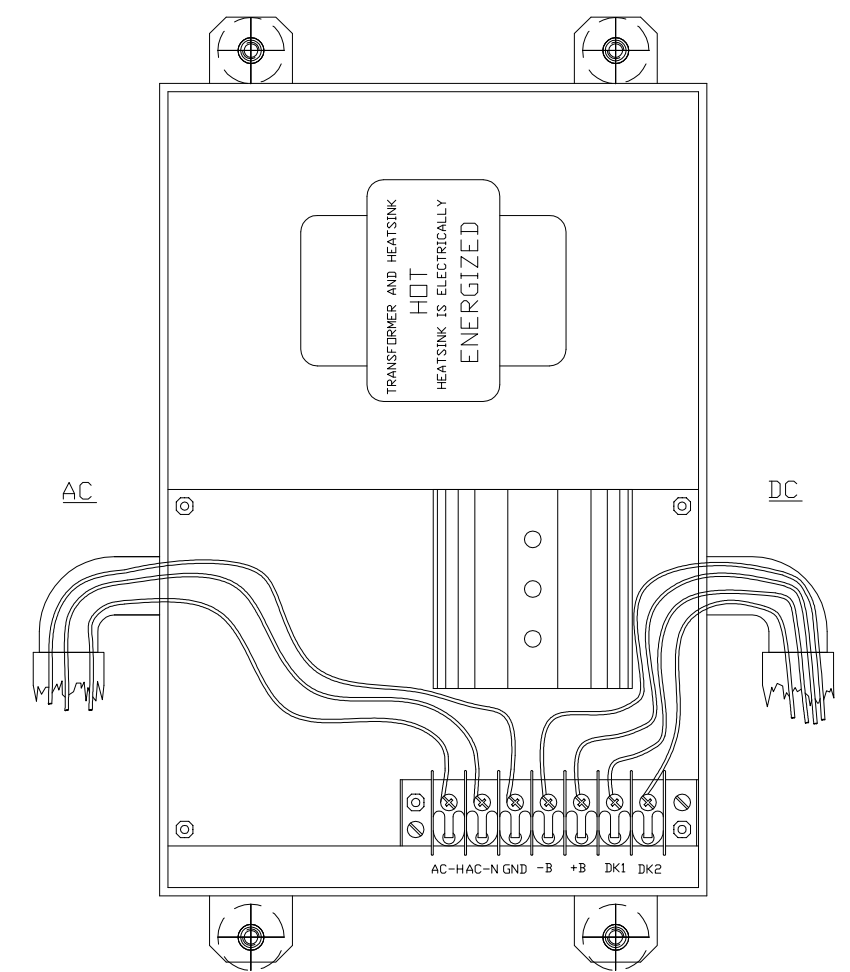
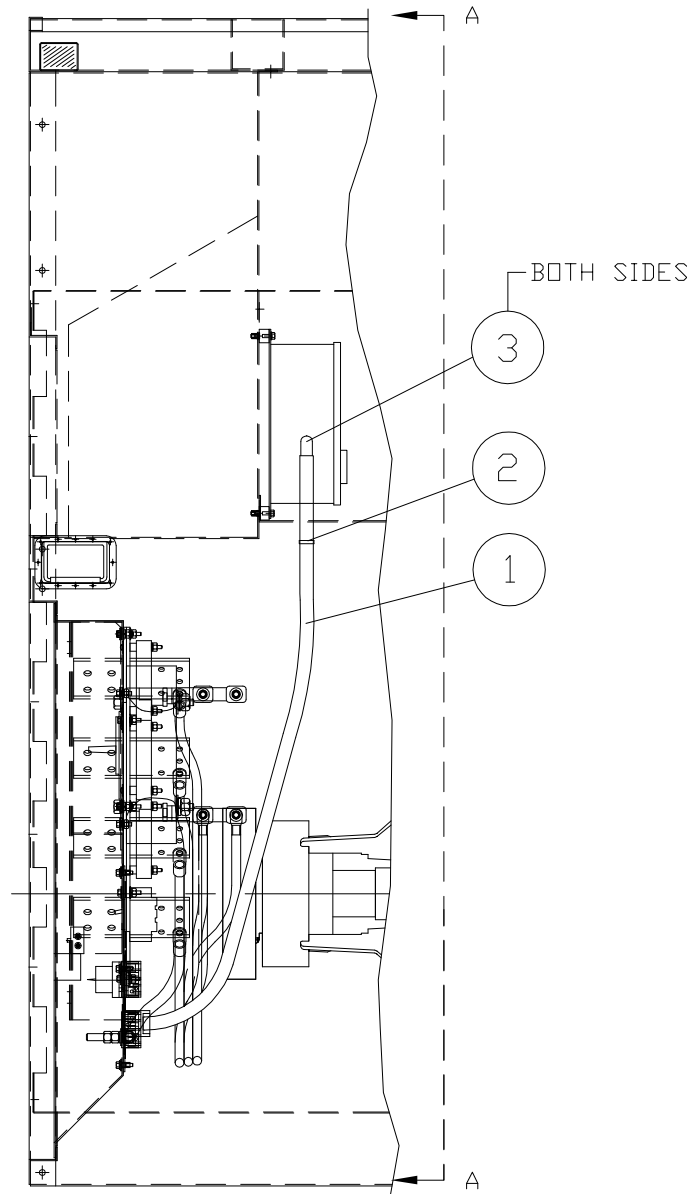
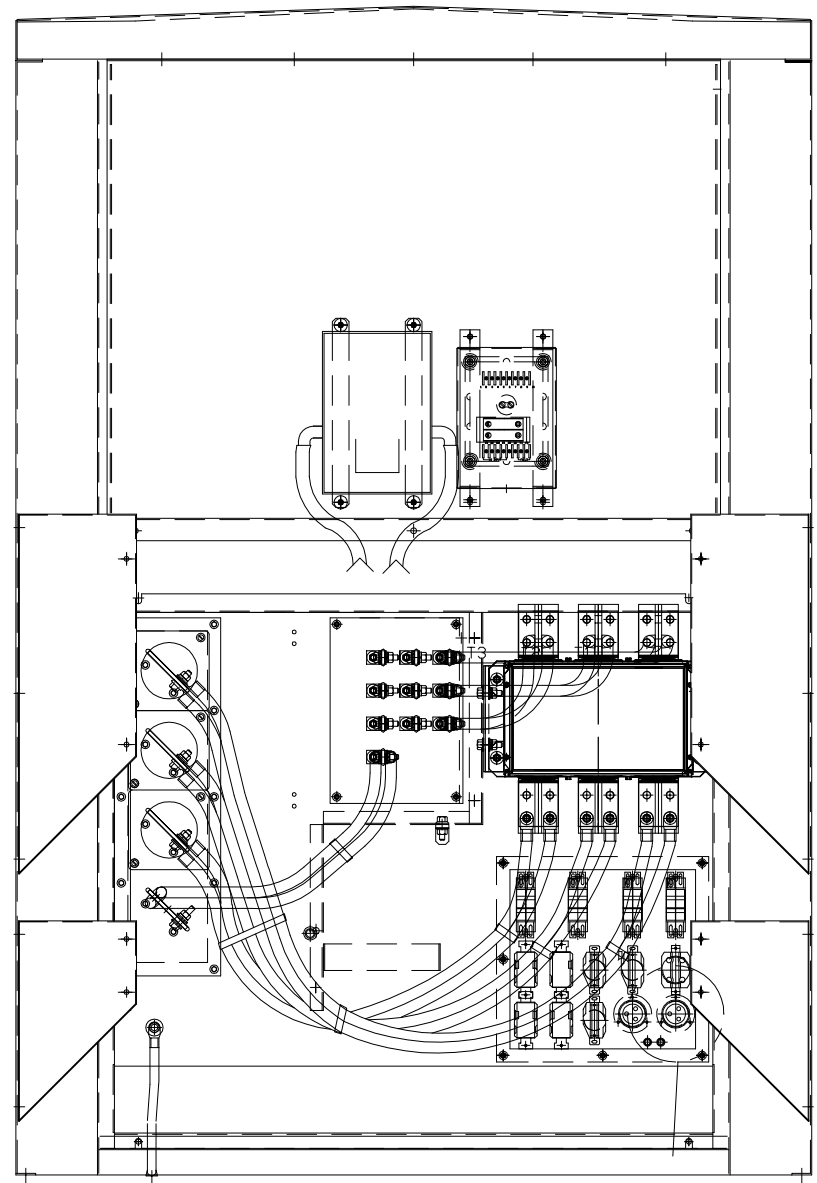


ITEM	QTY.	PART NO.	DESCRIPTION	WEIGHT
1	1	52E207	B.C. WIRING HARNESS	1
2	1	PLT4S-M	WHITE CABLE TIE	
3	2	E2691	90° FLEX CONNECTOR	
TOTAL				1



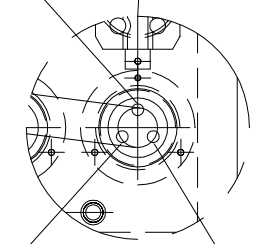
SECTION AA

BC2 (GRAY)

RIGHT SIDE VIEW

BC3 (GRAY)

BC1 (GRAY)



FRONT VIEW OF BATTERY CHARGER
SCALE 1=5

2	1	NO.	EXPORT UPDATE CHANGE NOTICE	06/20/13 BML DATE BY	ALTORFER		6315 W. FAUBER RD. BARTONVILLE, IL 61607	PHONE (309) 697-1234 FAX (309) 282-7546
					THIS DOCUMENT CONTAINS PROPRIETARY INFORMATION OF ALTORFER, INC. WITHOUT THE WRITTEN PERMISSION OF ALTORFER, INC., ANY COPYING OR OTHER USE EXCEPT THAT FOR WHICH IT WAS INTENDED IS PROHIBITED			
				ALL DIMENSIONS IN INCHES UNLESS OTHERWISE SPECIFIED		FILE DF/53A	PROJECT REFERENCE XQ/APS ACERT	
				TOLERANCES: X.X ± 0.100 X.XX ± 0.060 X.XXX ± 0.005	THIRD ANGLE PROJECTION	SCALE/SHEET SIZE 1=15/B	DRAWN BY BML	QUOTE NUMBER
				ANGULAR ± 1°		SHEET 1 OF 1	DATE 04/09/2008	WORK ORDER NUMBER
				TITLE XQ/APS BATTERY CHARGER GROUP				DRAWING NUMBER 53A226-1