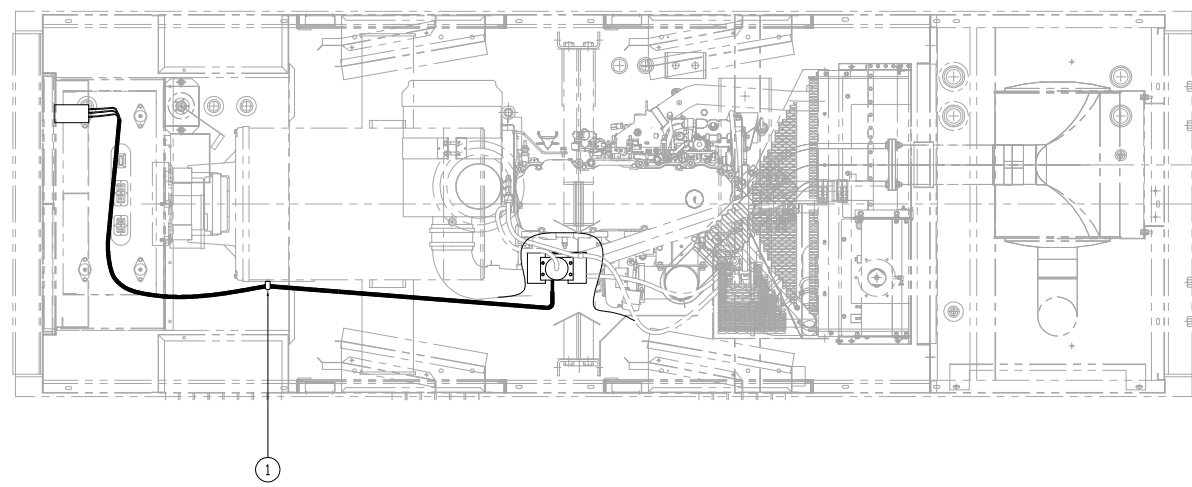
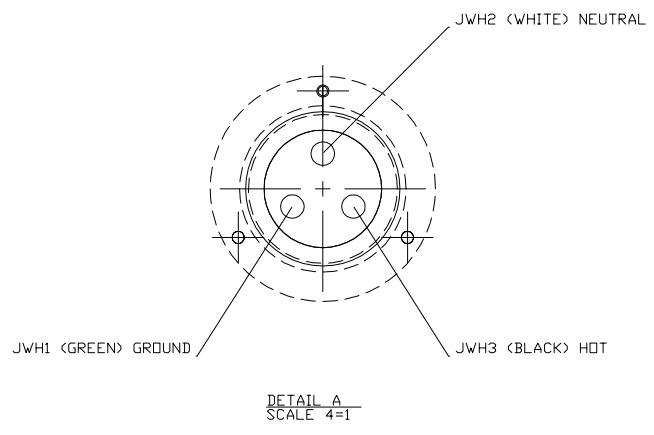
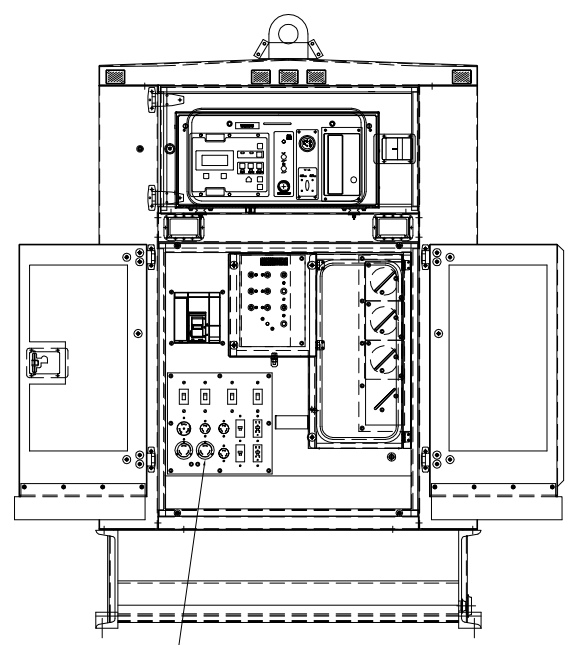


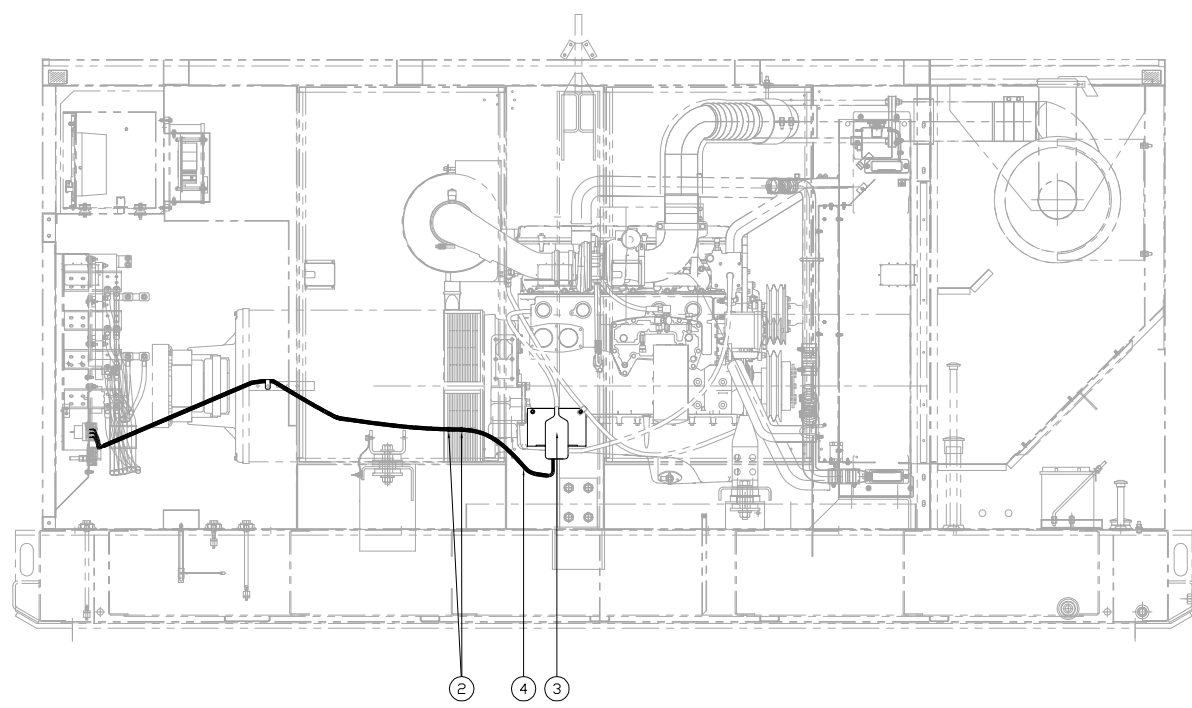
ITEM	QTY.	PART NO.	DESCRIPTION	WEIGHT
1	1	0708773	5/8" P-CLAMP	-
2	2	7K-1181	TY-RAPS MEDIUM BLK	-
3	1	2586845	JACKET WATER HEATER	-
4	60'	5N-8361	1/2" WIRE LOOM	-



TOP VIEW



REAR VIEW w/ LOAD DOORS OPEN
SINGLE VOLTAGE (600V) LOAD PAN



RIGHT SIDE VIEW

06/08/13 DATE BY	ALTORFER			ALTORFER POWER SYSTEMS	
				6315 W. FAUBER RD. PHONE (309) 697-1234 BARTONVILLE, IL 61607 FAX (309) 282-7546	
EXPLORE UPDATE CHANGE NOTICE	ALL DIMENSIONS IN INCHES UNLESS OTHERWISE SPECIFIED		FILE	PROJECT REFERENCE	
	TOLERANCES: XX ± 0.100 X.XX ± 0.060 X.XXX ± 0.005	THIRD ANGLE PROJECTION	SCALE/SHEET SIZE 1=15/D	DRAWN BY BML	QUOTE NUMBER -
	ANGULAR ± 1'		SHEET 1 OF 1	DATE 06/18/08	WORK ORDER NUMBER -
	TITLE XQ230/300 APS230/300 JACKET WATER HEATER WIRING GROUP		DRAWING NUMBER 53A225-1		